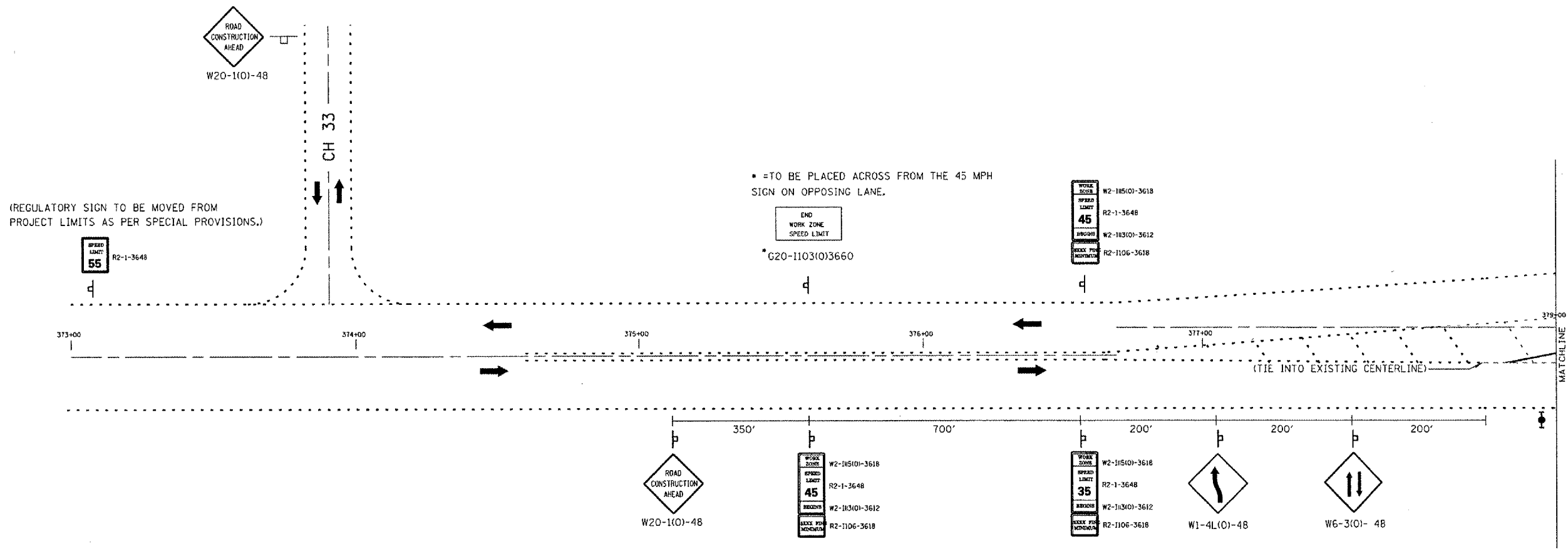


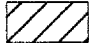






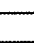
F.A.S. RITE.	SECTION	COUNTY	TOTAL SHEETS	SHEET NO.
1308	(2C-12D-BR)I	PEORIA	20	13
STA. 380+48.12		TO STA. 381+61.87		
FED. ROAD DIST. NO. 4		ILLINOIS FED. AID PROJECT		



**STAGE II PLAN**

NOT TO SCALE

**SYMBOLS**

-  Work Area
-  Sign on Portable Support
-  Type III Barricade
-  Drum w/ steady burning light
-  Double Vertical Panels w/ steady-burning lights
-  Type C bidirectional reflector
-  Temporary Concrete Barrier
-  Impact Attenuator

REVISIONS	
NAME	DATE

SN. 072-0137 IL.8  
over Big Hollow Crk.

ILLINOIS DEPARTMENT OF TRANSPORTATION

**TRAFFIC CONTROL SPECIAL**

VERT. SCALE: VERT. DATE: 04-25-2007

DRAWN BY: CEJ  
CHECKED BY:  

040725-10-07  
 P:\FILED\GEN\CONTRACT\SYSTEMS\US\OIAO\14\BRIDGE\Rep\Contr\act\68751\SN072-0137\IL8\over\Highway\Crk.dgn  
 SCALES  
 REF#