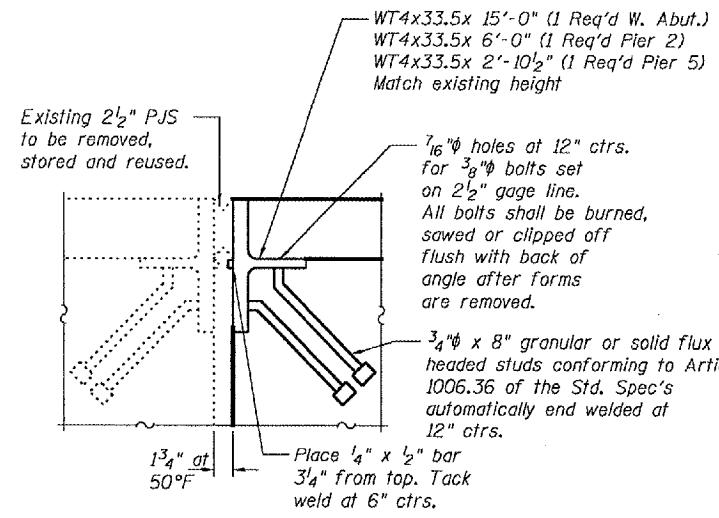
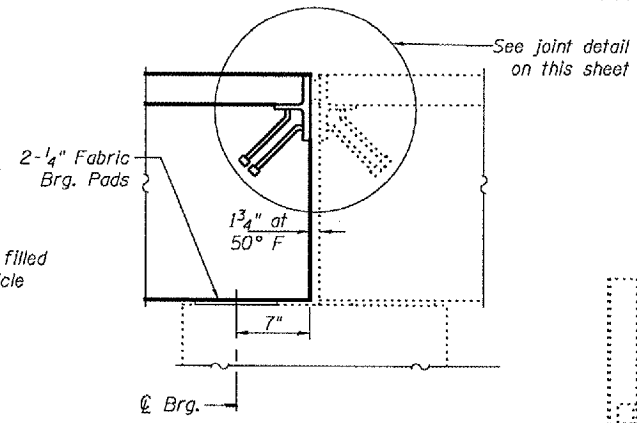


STATE OF ILLINOIS
DEPARTMENT OF TRANSPORTATION

| | | | | | |
|-----------------------|----------|------------------|------------------------|-----------|-------------|
| ROUTE NO. | SECTION | COUNTY | TOTAL SHEETS | SHEET NO. | SHEET NO. 4 |
| | | Peoria | 20 | 15B | 4 SHEETS |
| FED. ROAD DIST. NO. 7 | ILLINOIS | FED. AID PROJECT | Contract Number: 68751 | | |



EXPANSION JOINT DETAIL

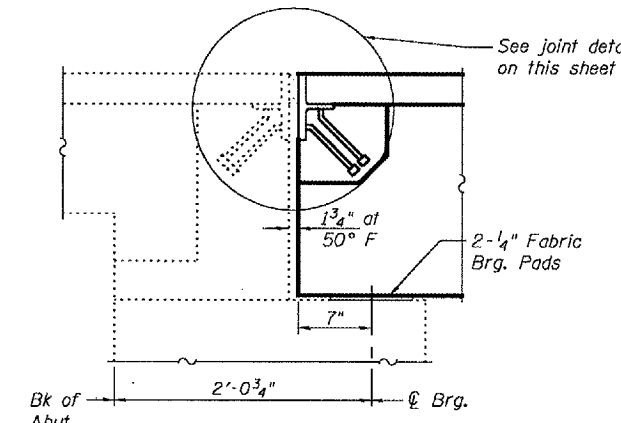


TYPICAL PIER 5 SECTION

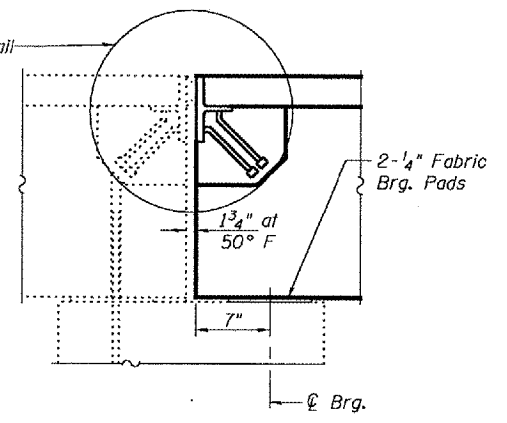
*1" Joint shall be filled with non-shrink grout. Dimension may vary to accommodate tolerance in beam lengths.

**Existing dowel rods are to be burned off, ground flush, and sealed with epoxy prior to placement of new beams. Cost included in Removal of Existing PPC Deck Beams. After beams have been erected holes shall be drilled into cap and dowel rods placed. Dowel holes shall be filled with non-shrink grout to top of beam and allowed to cure a minimum of 24 hours prior to grouting the shear keys.

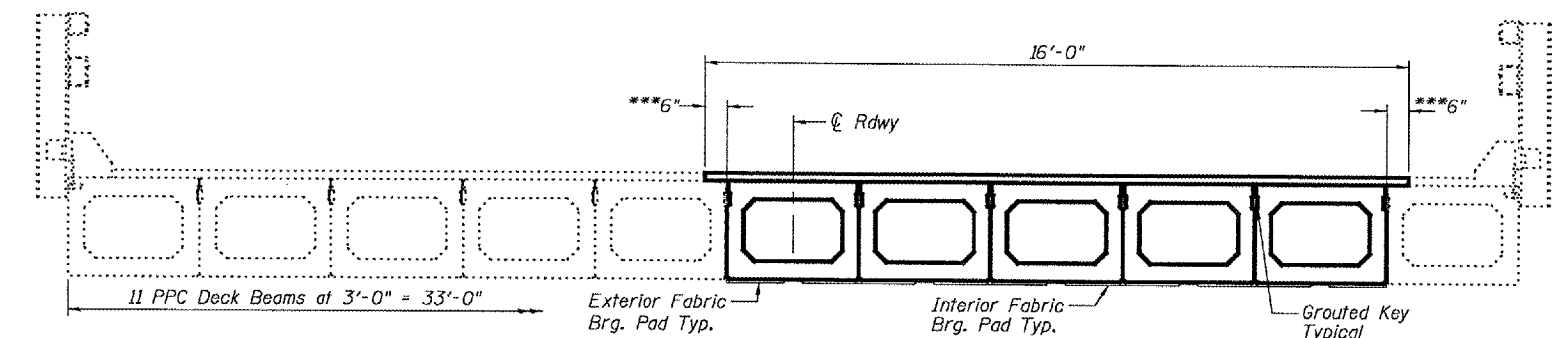
*** Limits of HMA surface removal (Typ.)



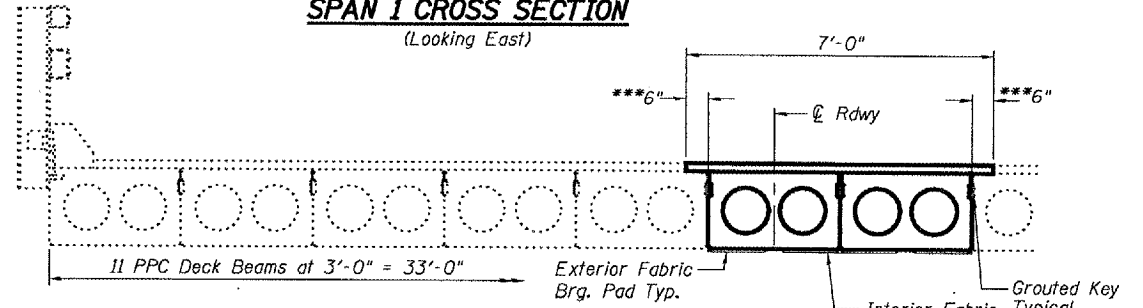
TYPICAL WEST ABUTMENT SECTION



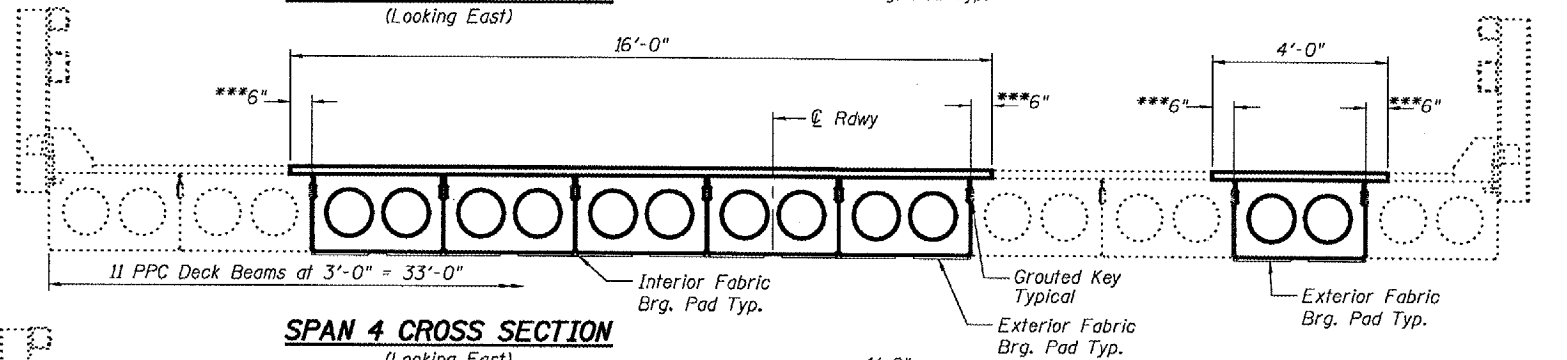
TYPICAL PIER 2 SECTION



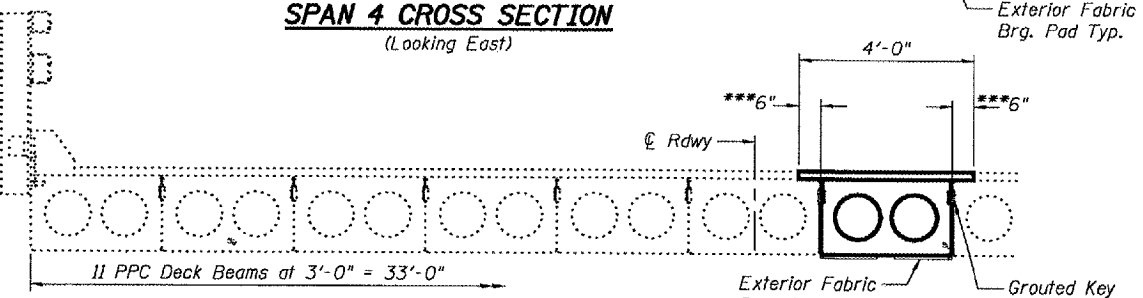
SPAN 1 CROSS SECTION (Looking East)



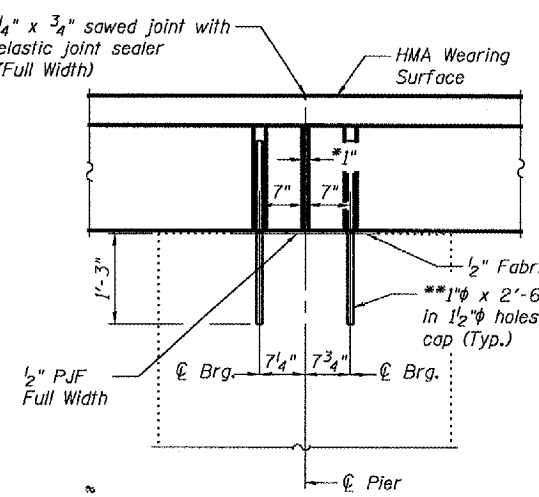
SPAN 3 CROSS SECTION (Looking East)



SPAN 4 CROSS SECTION (Looking East)

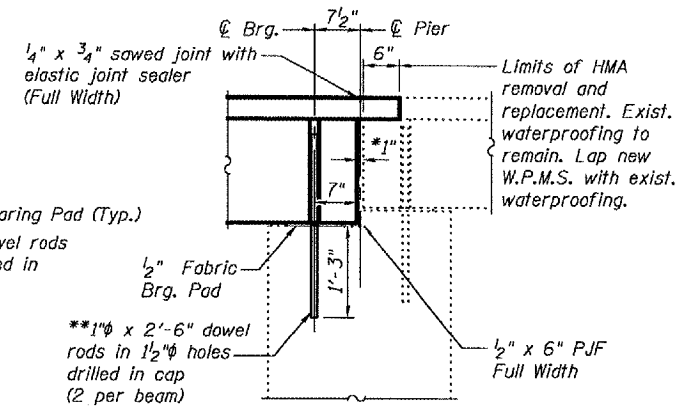


SPAN 5 CROSS SECTION (Looking East)



TYPICAL SECTION AT PIERS 3 AND 4

(Pier 4 Beam Line 7 shown, all other beam lines similar to Pier 1 Section)



TYPICAL PIER 1 SECTION

| | |
|----------|------------------|
| DESIGNED | V.H.V. |
| CHECKED | S.J.B. |
| DRAWN | Drew Christopher |
| CHECKED | V.H.V. S.J.B. |
| PD-3-S | |

| | |
|------------------------------------|--------------------------|
| June 21, 2007 | |
| EXAMINED | <i>Carl Proyer</i> |
| PASSED | <i>Ralph E. Anderson</i> |
| REPAIR PLANS UNIT CHIEF | |
| ENGINEER OF BRIDGES AND STRUCTURES | |

11-1-06

TYPICAL SECTIONS
F.A.S. RT.384
PEORIA COUNTY
SN 072-0047