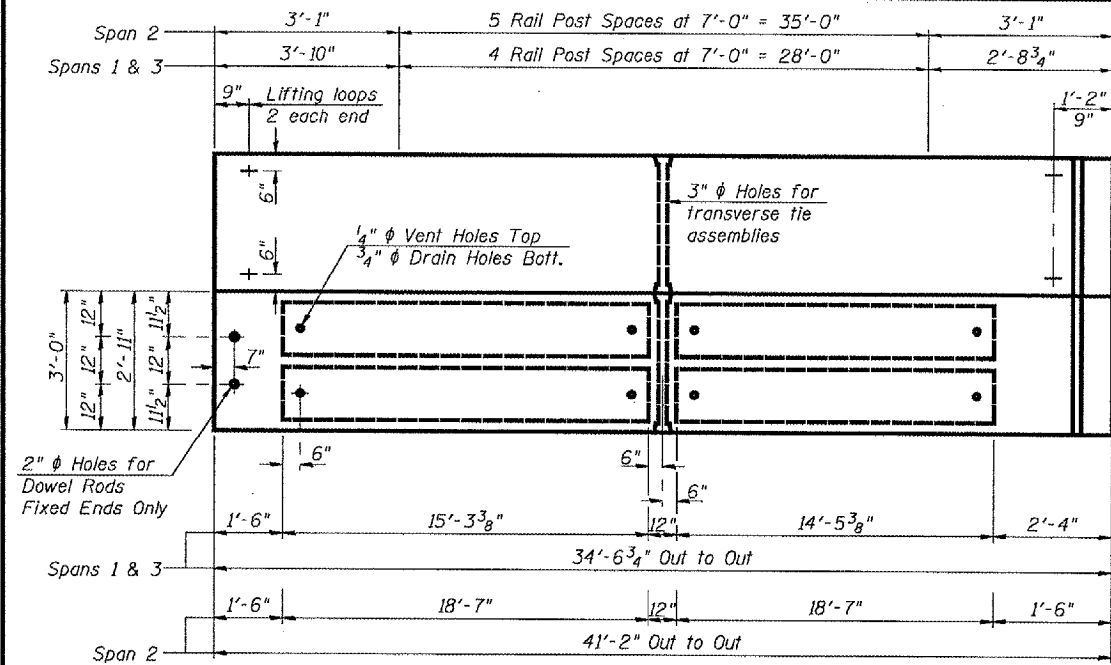
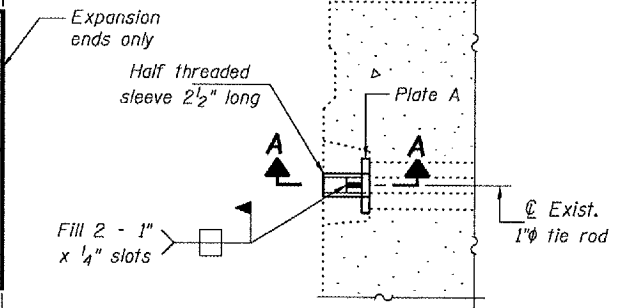


STATE OF ILLINOIS  
DEPARTMENT OF TRANSPORTATION

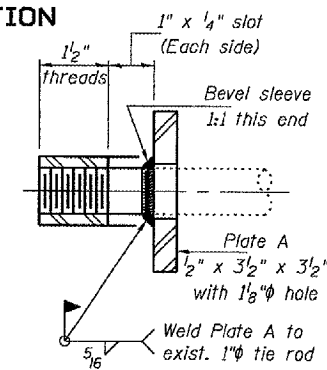
ROUTE NO.	SECTION	COUNTY	TOTAL SHEETS	SHEET	SHEET NO. 2
		Peoria	20	18	4 SHEETS
FED. ROAD DIST. NO. 7		ILLINOIS	FED. AID PROJECT		Contract Number: 68751



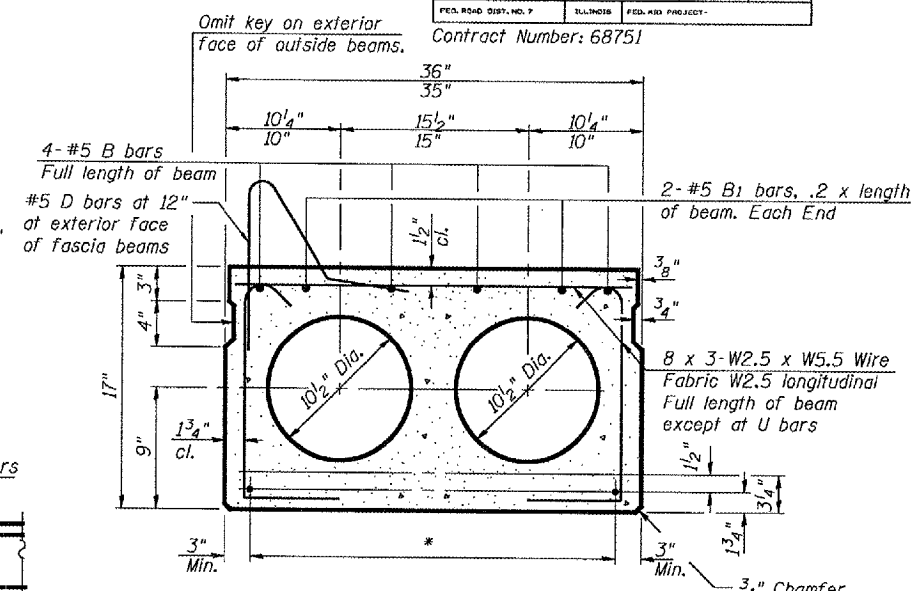
PLAN



DETAIL A

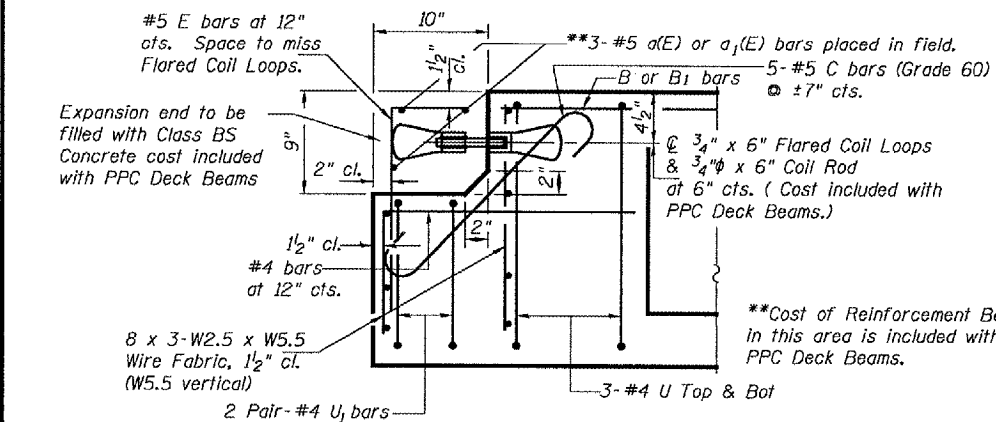


SECTION A-A  
(5 Required)

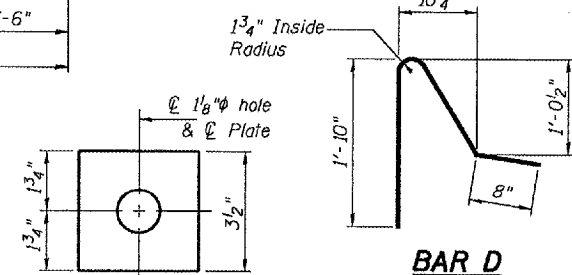


TYPICAL SECTION

1/2"  $\phi$  Strands, Each Strand Stressed to 30,900 Lbs.  
Spans 1 & 3: 6-Strands 1 3/4" up, 2-Strands 3/4" up  
Span 2: 9-Strands 1 3/4" up, 2-Strands 3/4" up, 2-Strands 12" up



EXPANSION END OF BEAM



BAR D

BAR U AND U<sub>1</sub>

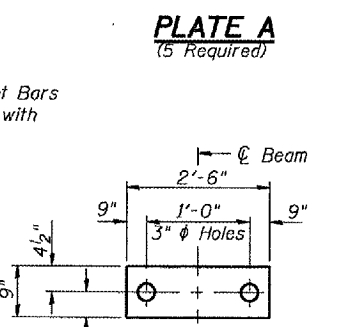
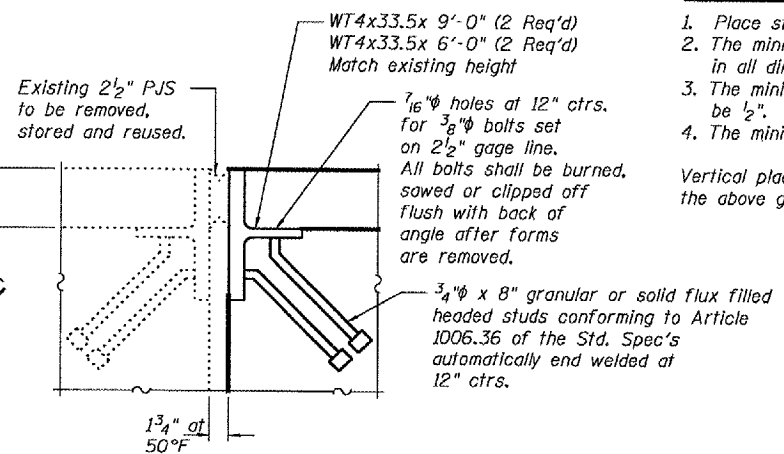
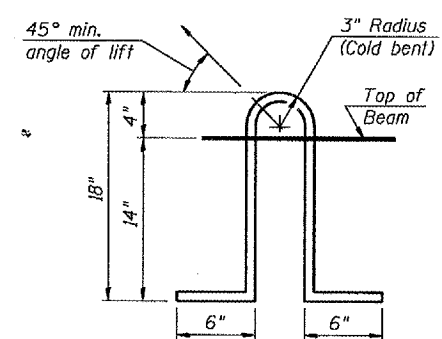


PLATE A  
(5 Required)

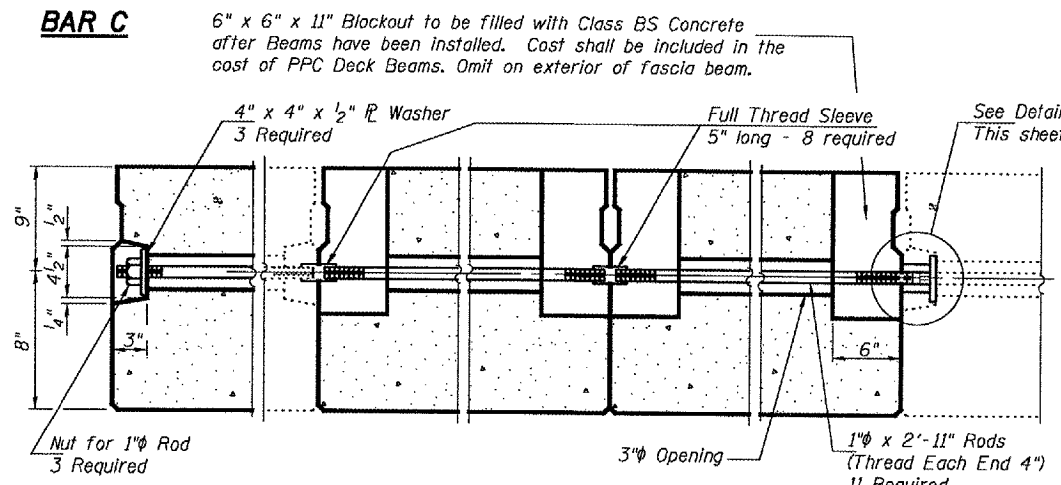
FABRIC BEARING PAD  
(For Expansion Pads Omit Holes)



ABUTMENT JOINT DETAIL



LIFTING LOOP DETAIL



TYPICAL TRANSVERSE TIE ASSEMBLY

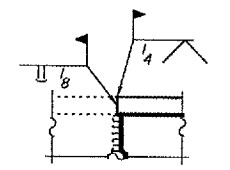
\* TRANSVERSE PLACEMENT GUIDELINES

1. Place strands symmetrically about centerline of beam.
  2. The minimum distance from center to center of strands in all directions shall be 2".
  3. The minimum clearance from strand to dowel hole shall be 1/2".
  4. The minimum clearance from strand to void shall be 1/2".
- Vertical placement of strands shall not be adjusted to satisfy the above guidelines.

BILL OF MATERIAL

Bar	No.	Size	Length	Shape
a(E)	6	#5	8'-11"	—
a <sub>1</sub> (E)	6	#5	5'-11"	—
e(E)	4	#6	18'-0"	—
e <sub>1</sub> (E)	2	#6	21'-3"	—
Precast Prestressed Conc Deck Bms. (17" Depth)			Sq. Ft.	1,149
Reinforcement Bars Epoxy Coated			Pound	80

ELEVATION NEW JOINT P TO EXISTING JOINT P



BEAM DETAILS  
F.A.S. RT. 384  
PEORIA COUNTY  
SN 072-0137

DESIGNED V.H.V.	EXAMINED June 21, 2007
CHECKED S.J.B.	PASSED <i>Carl Prosky</i> REPAIR PLANS UNIT CHIEF
DRAWN Drew Christopher	PASSED <i>Ralph E. Anderson</i> ENGINEER OF BRIDGES AND STRUCTURES
CHECKED V.H.V. S.J.B.	

PD-3-S 11-1-06