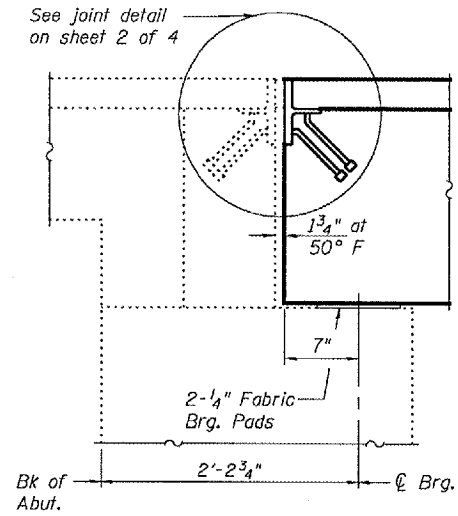


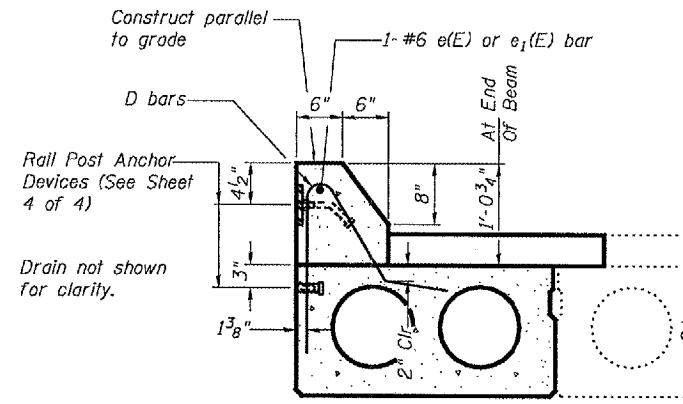
STATE OF ILLINOIS
DEPARTMENT OF TRANSPORTATION

ROUTE NO.	SECTION	COUNTY	TOTAL SHEETS	SHEET NO.
		Peoria	20	19
FED. AID PROJ. NO. 7		ALIGNMENT	FED. AID PROJECT	
Contract Number: 68751				

SHEET NO. 3
4 SHEETS

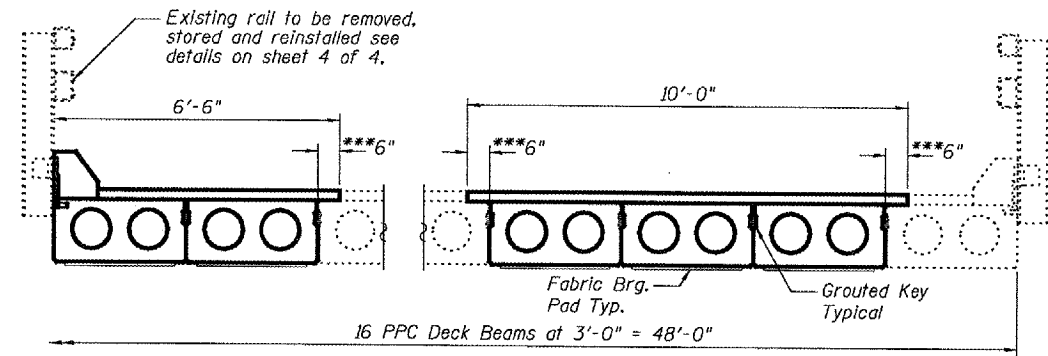


TYPICAL ABUTMENT SECTION



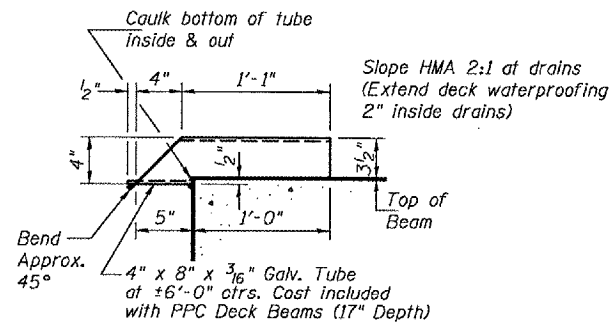
TYPICAL SECTION THRU CURB

(Curbs are to be poured in the field, cost included with Concrete Superstructure)



SPAN 1 CROSS SECTION

(Looking South)

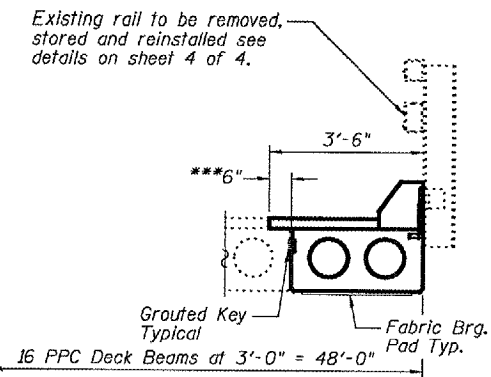


DRAIN DETAIL

*1" Joint shall be filled with non-shrink grout. Dimension may vary to accommodate tolerance in beam lengths.

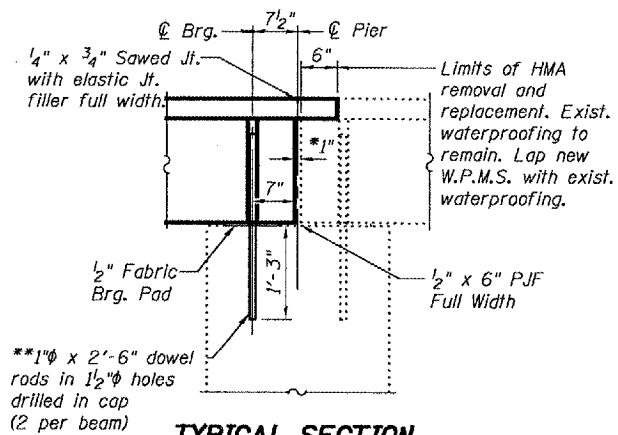
**Existing dowel rods are to be burned off, ground flush, and sealed with epoxy prior to placement of new beams. Cost included in Removal of Existing PPC Deck Beams. After beams have been erected holes shall be drilled into cap and dowel rods placed. Dowel holes shall be filled with non-shrink grout to top of beam and allowed to cure a minimum of 24 hours prior to grouting the shear keys.

***Limits of HMA surface removal (Typ.)

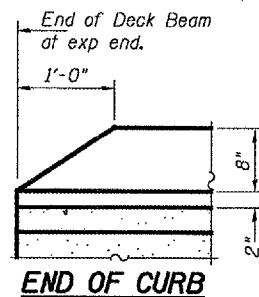


SPAN 2 CROSS SECTION

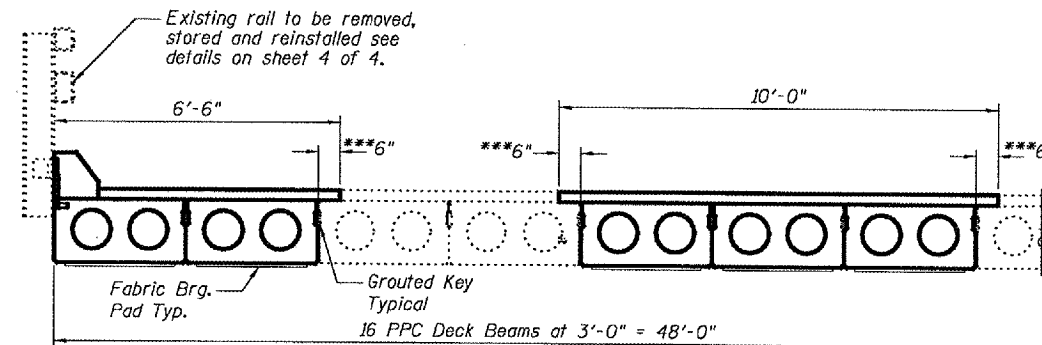
(Looking South)



TYPICAL SECTION AT PIERS



END OF CURB



SPAN 3 CROSS SECTION

(Looking South)

DESIGNED	V.H.V.
CHECKED	S.J.B.
DRAWN	Drew Christopher
CHECKED	V.H.V. S.J.B.

EXAMINED	June 21, 2007
PASSED	Ralph E. Anderson

REPAIR PLANS UNIT CHIEF
ENGINEER OF BRIDGES AND STRUCTURES

BEAM DETAILS
F.A.S. RT. 384
PEORIA COUNTY
SN 072-0137