

DESIGNER: CLARK JONES
PHONE: (309)671-3452

PROJECT ENGINEER: JIM MILLER
PHONE: (309)671-3451

F.A.S. RTE.	SECTION	COUNTY	TOTAL SHEETS	SHEET NO.
1388	-	PEORIA	20	1

D-94-083-07

+2
22

STATE OF ILLINOIS
DEPARTMENT OF TRANSPORTATION
DIVISION OF HIGHWAYS
**PROPOSED
HIGHWAY PLANS**

FAS 1388 (IL 8)
SECTION (Z-1D-BR-1)I-1;(ZC-15D-BR)I
PEORIA COUNTY
C-94-118-07

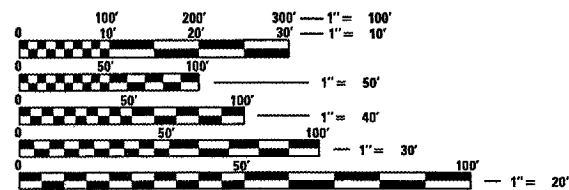


INDEX OF SHEETS:

- 1. COVER SHEET
- 2. GENERAL NOTES
- 3-4. SUMMARY OF QUANTITIES
- 5. TYPICAL SECTIONS
- 6-7. SCHEDULE OF QUANTITIES
- 8. SN.072-0137 GENERAL LAYOUT, SHOULDER REMOVAL
- 9-13. SN.072-0137 TRAFFIC CONTROL SPECIAL
- 14-15B . SN.072-0137 PLAN, ELEVATION, BEAM DETAILS
- 16. SN.072-0047 GENERAL LAYOUT, SHOULDER REMOVAL
- 17-20. SN.072-0047 PLAN, ELEVATION, BEAM DETAILS

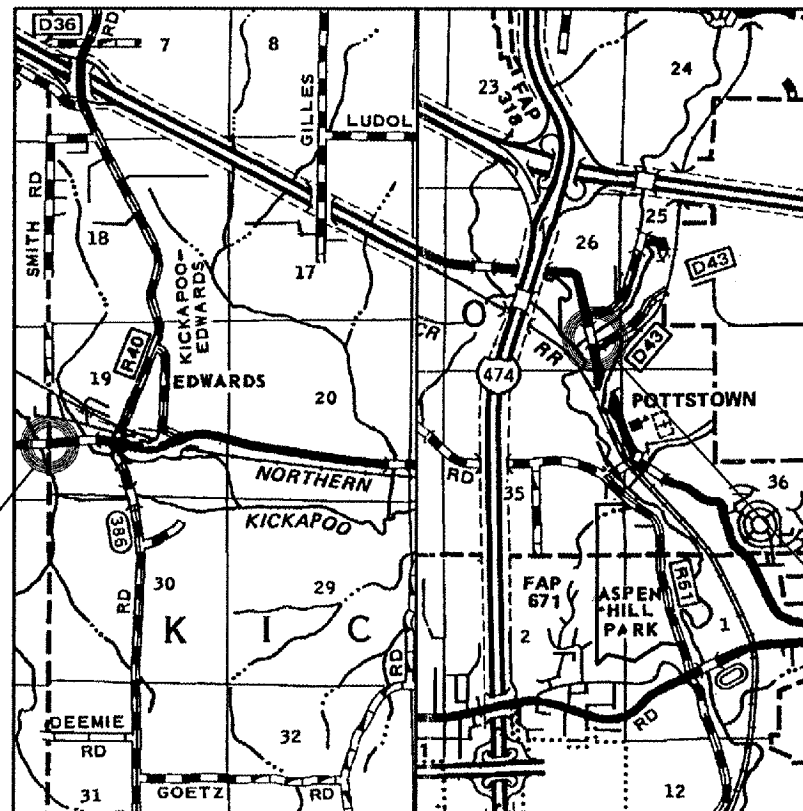
STANDARDS:

- 701001-01 701326-02
- 701006-02 702001-06
- 701201-02 704001-03
- 701321-08 780001-01



FULL SIZE PLANS HAVE BEEN PREPARED USING STANDARD ENGINEERING SCALES. REDUCED SIZED PLANS WILL NOT CONFORM TO STANDARD SCALES. IN MAKING MEASUREMENTS ON REDUCED PLANS, THE ABOVE SCALES MAY BE USED.

J.U.L.I.E.
JOINT UTILITY LOCATION INFORMATION FOR EXCAVATION
1-800-892-0123



LOCATION MAP

PROJECT CONSISTS OF EMERGENCY BEAM REPLACEMENTS ON STRUCTURES CARRYING IL. 8 OVER BIG HOLLOW CREEK (SN.072-0137) 3/4 MILE NORTH OF POTTSTOWN & CARRYING IL. 8 OVER KICKAPOO CREEK (SN 072-0047) 1/2 MI. WEST OF EDWARDS.

SN.072-0137
Section (ZC-15D-BR)I

STATE OF ILLINOIS
DEPARTMENT OF TRANSPORTATION
DIVISION OF HIGHWAYS

SUBMITTED June 10, 2007

[Signature]
DEPUTY DIRECTOR OF HIGHWAYS, REGION ENGINEER

June 29, 2007
[Signature]
ENGINEER OF DESIGN AND ENVIRONMENT

June 29, 2007
[Signature]
DIRECTOR OF HIGHWAYS, CHIEF ENGINEER

**PRINTED BY THE AUTHORITY
OF THE STATE OF ILLINOIS**

F.A.S. RTE.	SECTION	COUNTY	TOTAL SHEETS	SHEET NO.
1388	*	PEORIA	20	2
STA. VARIOUS		TO STA. VARIOUS		
FED. ROAD DIST. NO. 4		ILLINOIS FED. AID PROJECT		
* (Z-1D-BR-1)I-1;(ZC-15D-BR)I				

COMMI TMENTS

No commitments have been made for this project.

GENERAL NOTES

Plan dimensions and details relative to existing structure have been taken from existing plans and are subject to nominal construction variations. It shall be the Contractor's responsibility to verify such dimensions and details in the field and make necessary approved adjustments prior to construction or ordering of materials. Such variations shall not be cause for additional compensation for a change in the scope of the work, however, the Contractor will be paid for the quantity actually furnished at the unit price bid for the work.

Reinforcement bars shall conform to the requirements of AASHTO M 31 or M 322 Grade 60.

PLOT DATE : 04/20/2007
 PLOT SCALE : 1"=20'-0"
 REFERENCE : SHEET 1388-1
 FILE NAME : I:\BRIDGE\Rep-Contract\68751\BRIDGE\Rep-Contract\68751_S0072-01371_S0072-01371.dwg

REVISIONS	
NAME	DATE

ILLINOIS DEPARTMENT OF TRANSPORTATION

GENERAL NOTES

SCALE: VERT. DRAWN BY CEJ
 HORIZ. CHECKED BY
 DATE 04-20-2007

F.A.S. RITE	SECTION	COUNTY	TOTAL SHEET SHEETS NO.
1388		PEORIA	20 3
STA.	TO STA.		
FED. ROAD DIST. NO. 4 ILLINOIS FED. AID PROJECT			

SUMMARY OF QUANTITIES

PEORIA (URBAN) 100% STATE SAFETY - 2A

CODE NO.	ITEM	UNIT	SN072 -0047	SN072 -0137	TOTAL
35600712	HOT MIX ASPHALT BASE COURSE WIDENING, 9"	SQ. YD.	248	290	538
44001005	HOT MIX ASPHALT SURFACE REMOVAL	SQ. YD.	27.6	14	41.6
40603335	HOT MIX ASPHALT SURFACE COURSE, MIX "D", N50	TONS	29.5	14.4	43.9
44000920	BITUMINOUS CONCRETE SHOULDER REMOVAL	SQ. YD.	248	66	314
50300255	CONCRETE SUPERSTRUCTURES	CU YD		3.7	3.7
50400305	PPC DECK BEAMS (17" DEPTH)	SQ. FT.	0	1,155	1,155
50400405	PPC DECK BEAMS (21" DEPTH)	SQ. FT.	1225	0	1225
50400505	PPC DECK BEAMS (27" DEPTH)	SQ. FT.	957	0	957
50300300	PROTECTIVE COAT	SQ YD		50	50
50500405	FURNISHING AND ERECTING STRUCTURAL STEEL	POUND	852	1,070	1,922
50800205	REINFORCEMENT BARS, EPOXY COATED	POUND		80	80
58100200	WATERPROOFING MEMBRANE SYSTEM	SQ. YD.	262	132.5	394.5
50900905	REMOVING & RE-ERECTING EXISTING RAILING	FOOT		1,105	1,105
58300100	PORTLAND CEMENT MORTAR FAIRING COURSE	FOOT	981	456	1,437
67100100	MOBILIZATION	LSUM	0.5	0.5	1
70100405	TRAFFIC CONTROL AND PROTECTION, STANDARD 701321	EACH	1	0	1
70100450	TRAFFIC CONTROL AND PROTECTION, STANDARD 701201	LSUM	0.5	0.5	1
70100500	TRAFFIC CONTROL AND PROTECTION, STANDARD 701326	LSUM	0.5	0.5	1
70101800	TRAFFIC CONTROL AND PROTECTION (SPECIAL)	LSUM	0	1	1

DATE: 05-18-07
 FILE: C:\CENTRAL\T\STDA\PLANS\SDMO\1\1\BRIDGE Rep\Contract\68751\072-0137\SUM72-0137L\Drawn\Bighill\c.dwg
 SCALE: 1"=40'
 PLOT:

REVISIONS	
NAME	DATE
CEJ	06/08/07

ILLINOIS DEPARTMENT OF TRANSPORTATION

SUMMARY OF QUANTITIES

SCALE: VERT. DATE 04-20-2007
 HORIZ. DATE 04-20-2007

DRAWN BY CEJ
 CHECKED BY

(Z-ID-BR-111-14ZC-150-BR)	F.A.S. RIE. 1388	SECTION	COUNTY PEORIA	TOTAL SHEETS 20	SHEET NO. 4
STA.		TO STA.			
FED. ROAD DIST. NO. 4		ILLINOIS FED. AID PROJECT			

SUMMARY OF QUANTITIES

PEORIA (URBAN) 100% STATE SAFETY - 2A

CODE NO.	ITEM	UNIT	SN072 -0047	SN072 -0137	TOTAL
70300520	PAVEMENT MARKING TAPE, TYPE III, 4"	FOOT	1130	6936	8066
70301000	WORKZONE PAVEMENT MARKING REMOVAL	FOOT	1130	1460	2600
70400100	TEMPORARY CONCRETE BARRIER	FOOT	408	336	744
70400200	RELOCATE TEMPORARY CONCRETE BARRIER	FOOT	408	672	1080
* 78005110	EPOXY PAVEMENT MARKING-LINE 4"	FOOT	1330	3172	4502
* 78005150	EPOXY PAVEMENT MARKING-LINE 12"	FOOT	0	550	550
78300100	PAVEMENT MARKING REMOVAL	SQ. FT.	444	1856	2300
X0320047	REMOVAL OF EXISTING PPC DECK BEAMS	SQ. FT.	2202	1,160	3,362
* X7200201	WIDTH RESTRICTION SIGNING	LSUM	0.5	0.5	1
Z0001900	ASBESTOS BEARING PAD REMOVAL	EACH	8	10	18
● Z0030240	IMPACT ATTENUATORS, TEMPORARY(NON-REDIRECTIVE), TEST LEVEL 2	EACH	2	2	4
● Z0030340	IMPACT ATTENUATORS, RELOCATE(NON-REDIRECTIVE), TEST LEVEL 2	EACH	2	4	6
● SFTY-3N					
■	ITEM REUSED FOR BOTH STRUCTURES				

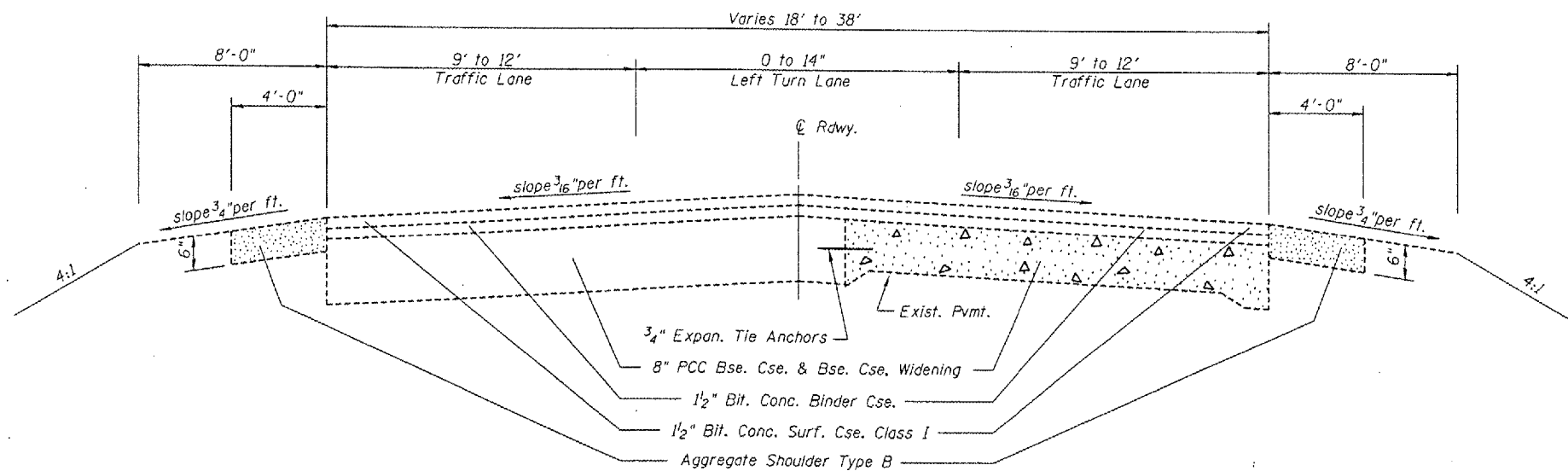
* SPECIALTY ITEM

REVISIONS		ILLINOIS DEPARTMENT OF TRANSPORTATION
NAME	DATE	
		SUMMARY OF QUANTITIES

SCALE: VERT. HORIZ. DATE 04-20-2007 DRAWN BY CEJ CHECKED BY

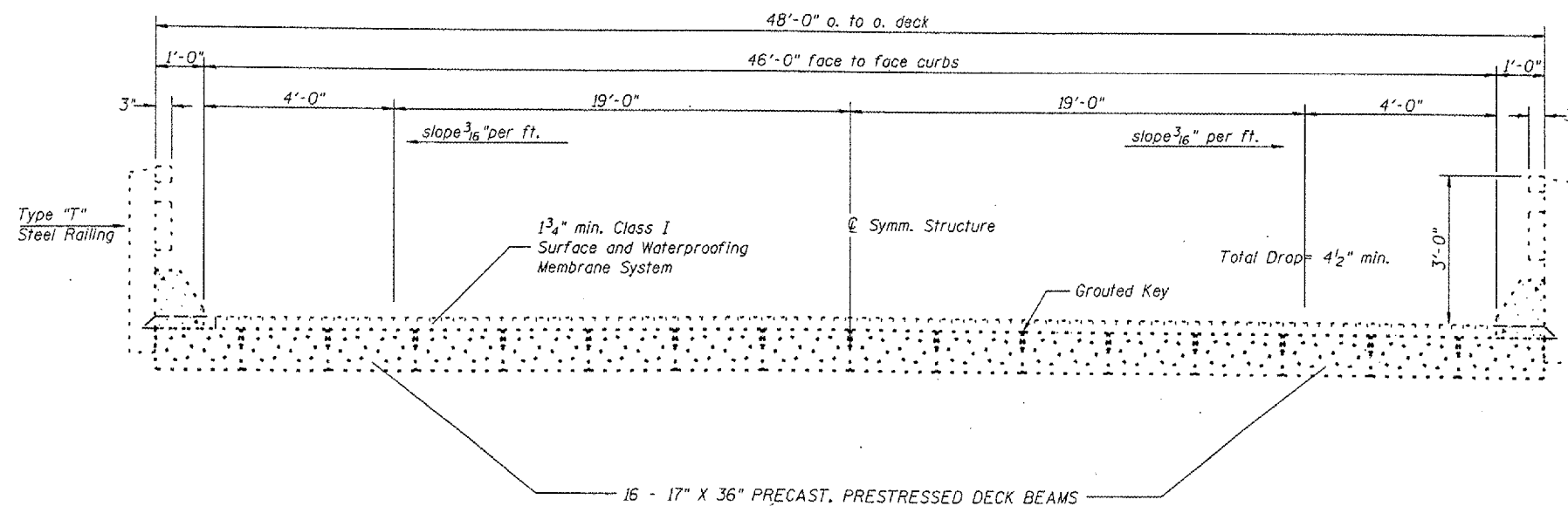
DATE: 04-19-07
 FILE: I:\ENR\04\15\STOMP\HS\SQAD 14\BRIDGE Rep\Conv\mats\SM78 SM72-8137\SM72-8137ILBor-Big\011002.dwg
 SCALE: 1"=100'
 SHEET: 4

F.A.S. RTE.	SECTION	COUNTY	TOTAL SHEETS	SHEET NO.
138B	(2C-150-BR1)	PEORIA	20	5
STA. 380+48.12 TO STA. 381+61.87				
FED. ROAD DIST. NO. 4 ILLINOIS FED. AID PROJECT				



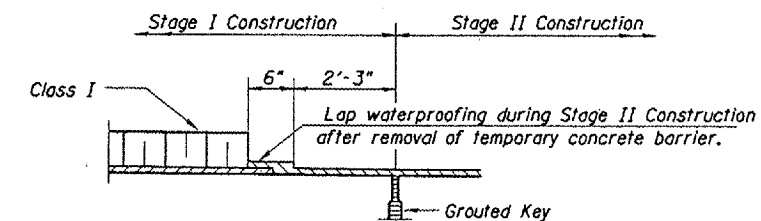
ROADWAY SECTION

Sta. 372+70 to Sta. 380+48.12
Sta. 381+61.87 to Sta. 393+58



BRIDGE CROSS SECTION

Sta. 380+48.12 to Sta. 381+61.87



WATERPROOFING TREATMENT
(Looking South)

SN. 072-0137 IL.8
over Big Hollow Crk.

REVISIONS	
NAME	DATE

ILLINOIS DEPARTMENT OF TRANSPORTATION

TYPICAL SECTIONS

SCALE: VERT. 1"=4'
HORIZ. 1"=20'
DATE 04-20-2007

DRAWN BY CEJ
CHECKED BY

F.A.S. RTE.	SECTION	COUNTY	TOTAL SHEETS	SHEET NO.
138B	*	PEORIA	20	7
STA. VARIOUS		TO STA. VARIOUS		
FED. ROAD DIST. NO. 4 ILLINOIS FED. AID PROJECT				

• (2-1D-BR-1)1-(1)-(2C-15D-BR)1

SCHEDULE OF QUANTITIES

REMOVAL OF EXISTING PPC DECK BEAMS

SN. 072-0137 DECK REPL. LOCATIONS = 726 SQ. FT.
 SN. 072-0047 DECK REPL. LOCATIONS = 2202 SQ. FT.
2928 SQ. FT.

PPC DECK BEAMS (17" DEPTH)

SN. 072-0137 DECK REPL. LOCATIONS = 717 SQ. FT.
 SN. 072-0047 DECK REPL. LOCATIONS = 0 SQ. FT.
717 SQ. FT.

PPC DECK BEAMS (21" DEPTH)

SN. 072-0137 DECK REPL. LOCATIONS = 0 SQ. FT.
 SN. 072-0047 DECK REPL. LOCATIONS = 1225 SQ. FT.
1225 SQ. FT.

PPC DECK BEAMS (27" DEPTH)

SN. 072-0137 BRIDGE DECK LOCATIONS = 0 SQ. FT.
 SN. 072-0047 BRIDGE DECK LOCATIONS = 957 SQ. FT.
957 SQ. FT.

ASBESTOS BEARING PAD REMOVAL

SN. 072-0137 PIER REPL. LOCATIONS = 7 EACH
 SN. 072-0047 PIER REPL. LOCATIONS = 8 EACH
15 EACH

FURNISHING & ERECTING STRUCTURAL STEEL

SN. 072-0137 BEAM REPLACEMENT LOCATIONS = 746 POUND
 SN. 072-0047 BEAM REPLACEMENT LOCATIONS = 852 POUND
1598 POUND

PORTLAND CEMENT MORTAR FAIRING COURSE

SN. 072-0137 BEAM REPLACEMENT LOCATIONS = 346 FOOT
 SN. 072-0047 BEAM REPLACEMENT LOCATIONS = 981 FOOT
1327 FOOT

WATERPROOFING MEMBRANE SYSTEM

SN. 072-0137 DECK REPLACEMENT BEAMS = 93.5 SQ. YD.
 SN. 072-0047 DECK REPLACEMENT BEAMS = 262 SQ. YD.
356 SQ. YD.

HOT MIX ASPHALT SURFACE COURSE, MIX"D", N50

SN. 072-0137 BRIDGE DECK LOCATIONS = 11.2 TONS
 SN. 072-0047 BRIDGE DECK LOCATIONS = 29.5 TONS
40.7 TONS

WORKZONE PAVEMENT MARKING REMOVAL

SN. 072-0137 LANE MARKING = 1460 FOOT
 SN. 072-0047 LANE MARKING = 1130 FOOT
2600 FOOT

EPOXY PAVEMENT MARKING-LINE 4"

CENTERLANE & E. O. P. REPLACEMENT = 3172 FOOT
 CENTERLANE & E. O. P. REPLACEMENT = 1330 FOOT
4502 FOOT

EPOXY PAVEMENT MARKING-LINE 12"

CENTERLANE DIAGONALS = 550 FOOT
 CENTERLANE DIAGONALS = 0 FOOT
550 FOOT

SN. 072-0047 IL.8 over Kickapoo Crk.

REVISIONS	
NAME	DATE

ILLINOIS DEPARTMENT OF TRANSPORTATION

SCHEDULE OF QUANTITIES

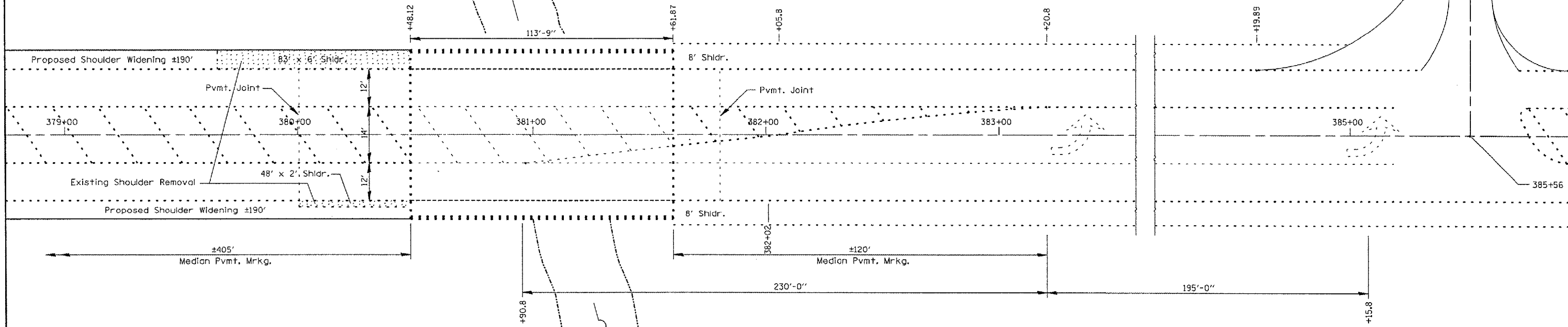
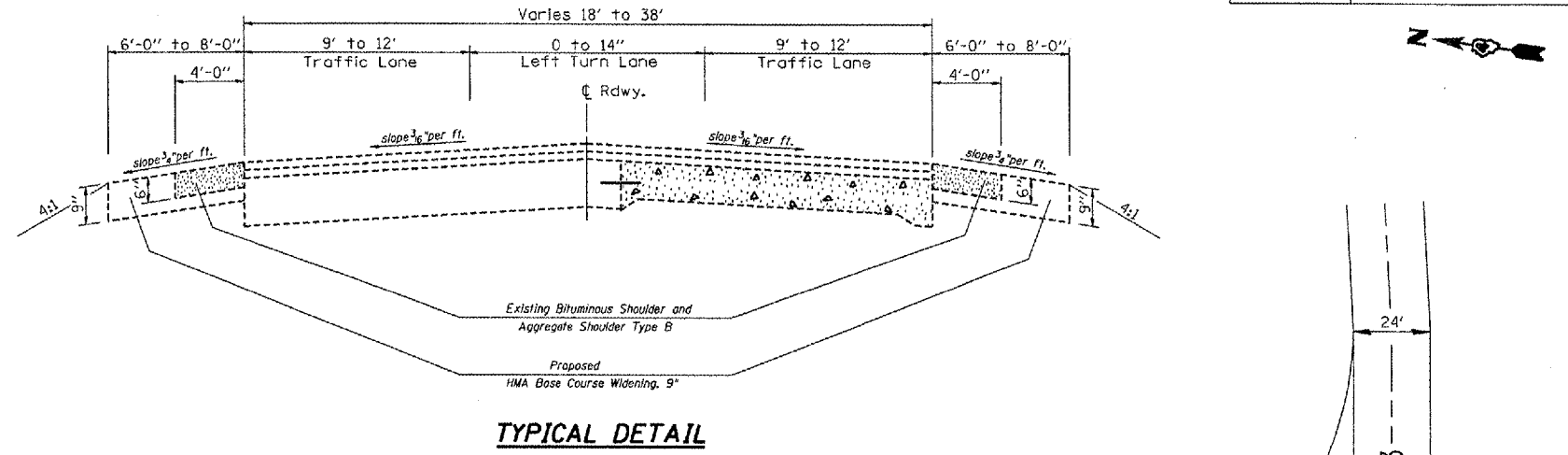
SCALE: VERT. HORIZ. DATE 05-15-2007

DRAWN BY CEJ CHECKED BY

PLOT DATE : 05-15-07
PLOT SCALE : 1"=50'-0"
REFERENCE : #REF*

F.A.S. RTE.	SECTION	COUNTY	TOTAL SHEETS	SHEET NO.
138B	(2C-150-BR)	PEORIA	20	8
STA. 380+48.12		TO STA. 381+61.87		
FED. ROAD DIST. NO. 4 ILLINOIS FED. AID PROJECT				

NOTES
Shoulder removal and replacement shall be completed prior to shifting existing traffic lanes for Traffic Control staging.



PLAN

SHOULDER QUANTITY SCHEDULE

SHOULDER REMOVAL	
LEFT WEST APPROACH	SQ.YD.
Sta. 379+12 to Sta. 380+48.12	55.3
RIGHT WEST APPROACH	SQ.YD.
Sta. 379+76 to Sta. 380+48.12	10.7
TOTAL	66
SHOULDER REPLACEMENT	
LEFT WEST APPROACH	SQ.YD.
Sta. 378+58.12 to Sta. 380+48.12	163.3
RIGHT WEST APPROACH	SQ.YD.
Sta. 378+58.12 to Sta. 380+48.12	126.7
TOTAL	290

BILL OF MATERIAL

ITEM	UNIT	QUANTITY
HOT MIX ASPHALT BASE COURSE WIDENING, 9"	SQ.YD.	290
BITUMINOUS CONCRETE SHOULDER REMOVAL	SQ.YD.	66
MOBILIZATION	LSUM	1.0
WIDTH RESTRICTION SIGNING	LSUM	1.0
TRAFFIC CONTROL AND PROTECTION, STANDARD(Special)	EACH	1.0
PAVEMENT MARKING TAPE, TYPE III, 4"	FOOT	6936
WORKZONE PAVEMENT MARKING REMOVAL	FOOT	1460
TEMPORARY CONCRETE BARRIER	FOOT	336
RELOCATE TEMPORARY CONCRETE BARRIER	FOOT	672
EPOXY PAVEMENT MARKING-LINE 4"	FOOT	3172
EPOXY PAVEMENT MARKING-LINE 12"	FOOT	550
PAVEMENT MARKING REMOVAL	SQ.FT.	1856
IMPACT ATTENUATORS, TEMPORARY(NRD), TEST LEVEL 2	EACH	2.0
IMPACT ATTENUATORS, RELOCATE(NRD), TEST LEVEL 2	EACH	4.0

SN. 072-0137 IL.8
over Big Hollow Crk.

REVISIONS	
NAME	DATE

ILLINOIS DEPARTMENT OF TRANSPORTATION

GENERAL LAYOUT AND SHOULDER REM/REPL.

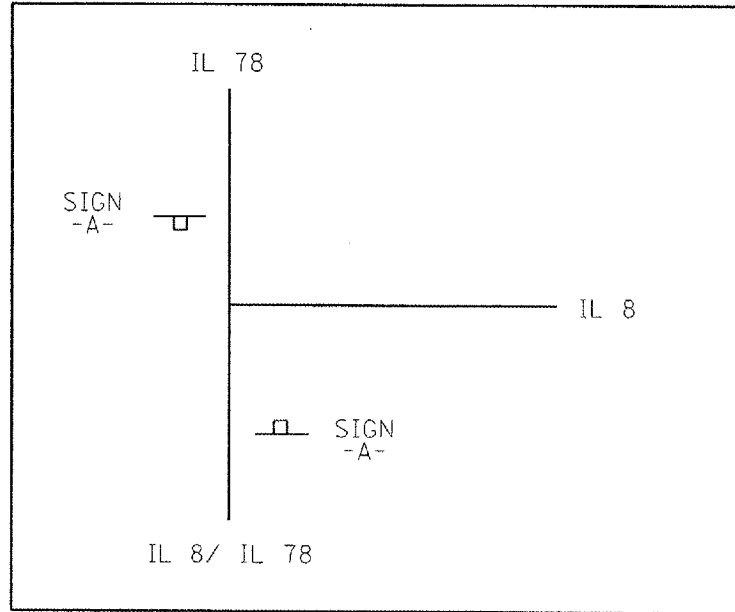
SCALE: VERT. _____
HORIZ. _____
DATE 04-25-2007

DRAWN BY CEJ
CHECKED BY _____

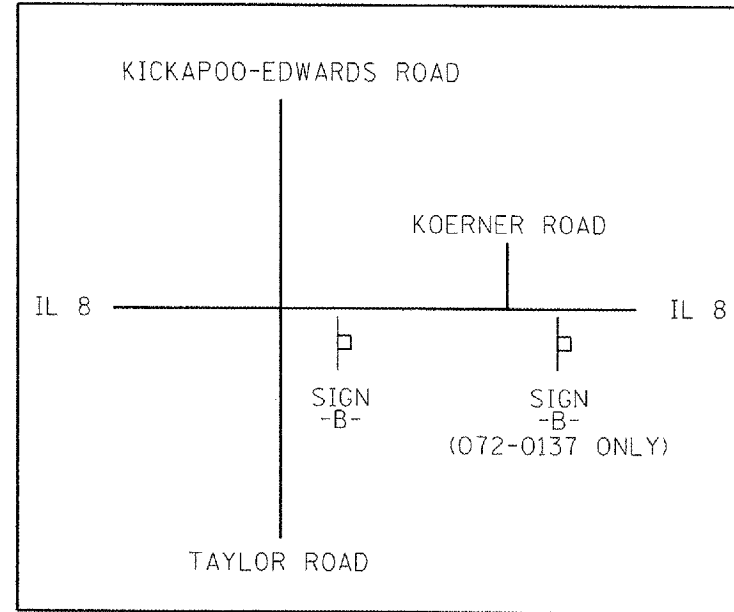
DATE: 04-18-07
FILE: E:\ENR\072-0137\15\DR\15\1504\1504.DWG Rep-Cont-1504-1504.DWG
SN: 072-0137 IL.8
REF: 1504-1504.DWG

F.A.S. RTE.	SECTION	COUNTY	TOTAL SHEETS	SHEET NO.
1388	(2C-150-BR)	PEORIA	20	9
STA. 380+48.12		TO STA. 381+61.87		
FED. ROAD DIST. NO. 4 ILLINOIS FED. AID PROJECT				

LOCATION 1



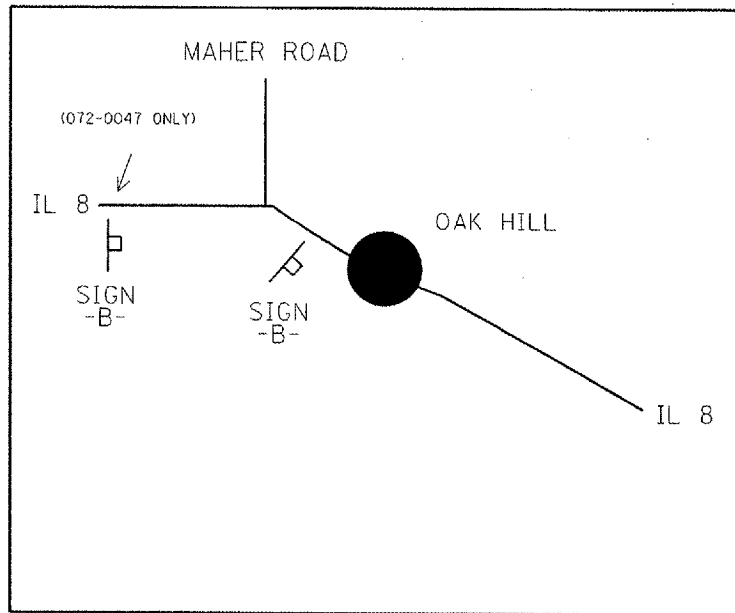
LOCATION 2



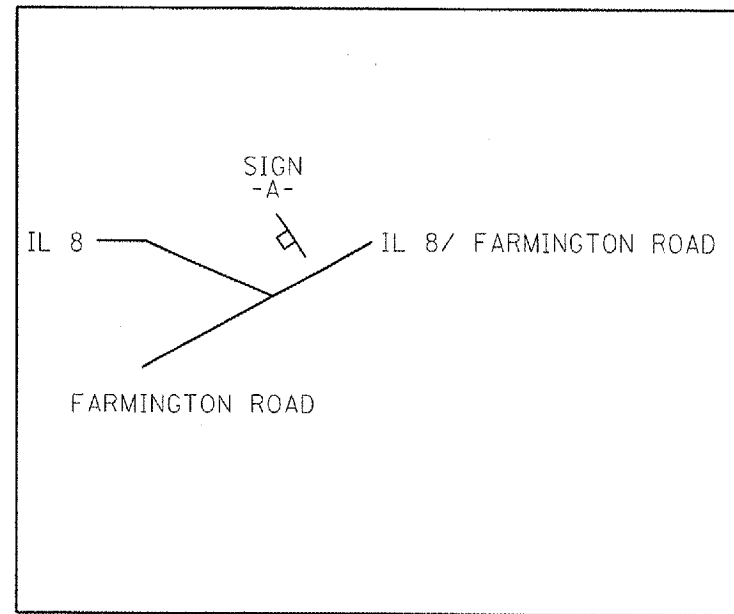
072-0137
SIGNING DISTANCES

	SIGN -A-	SIGN -B-
LOCATION 1	17.0 MILES	NA
LOCATION 2	NA	KOERNER RD.- 1.3 TAYLOR RD.- 4.8
LOCATION 3	NA	12.0 MILES
LOCATION 4	2.5 MILES	NA

LOCATION 3



LOCATION 4



072-0047
SIGNING DISTANCES

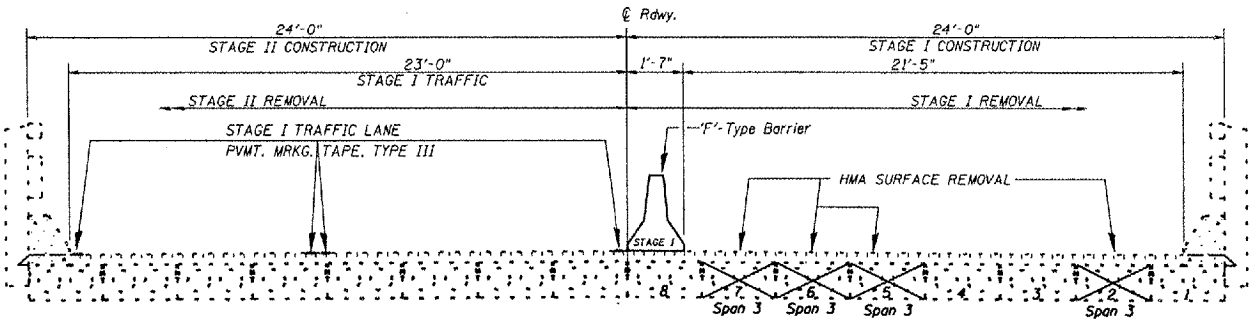
	SIGN -A-	SIGN -B-
LOCATION 1	12.0 MILES	NA
LOCATION 2	NA	NA
LOCATION 3	NA	6.8 MILES
LOCATION 4	7.7 MILES	NA

I:\Projects\68751\1388\150\BR\150-BR\150-BR.dwg
 DATE: 04-25-2007 11:45:00 AM
 USER: CEJ
 SCALE: 1/8"=1'-0"
 PLOT: 04-25-2007 11:45:00 AM

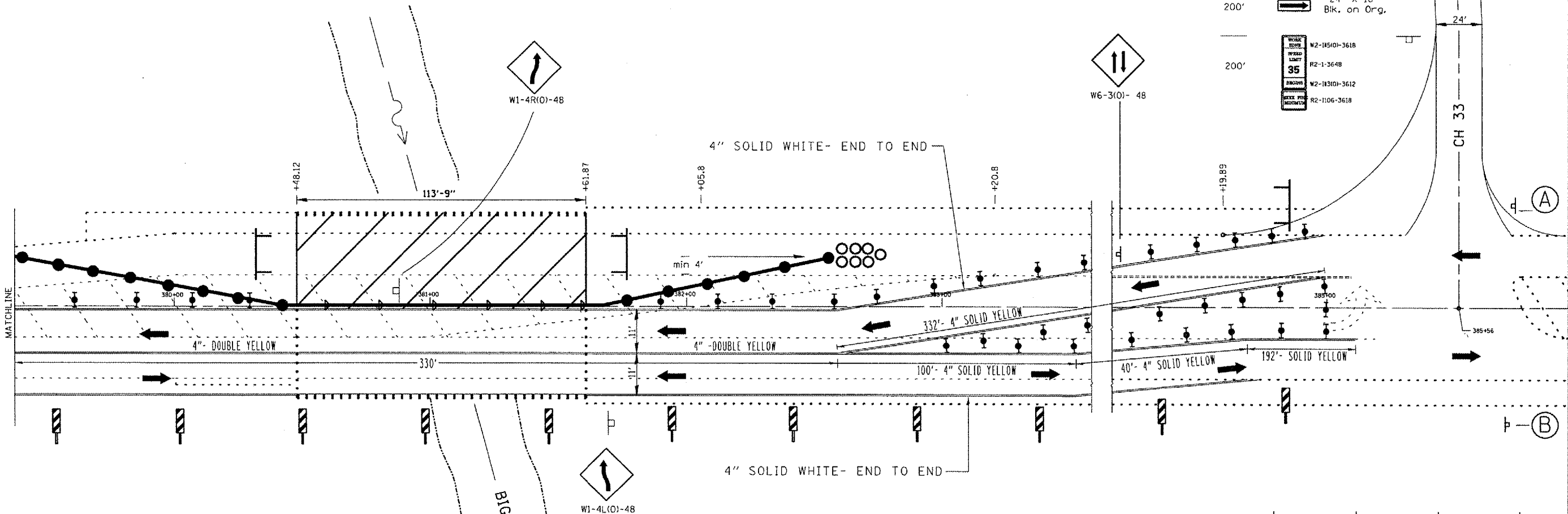
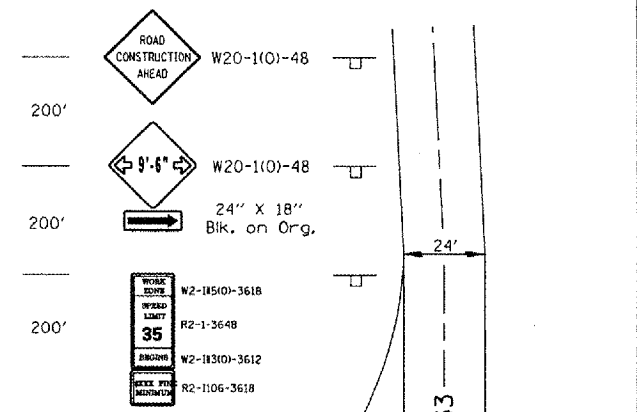
SEE SPECIAL PROVISIONS FOR SIGNING DETAILS.

REVISIONS		ILLINOIS DEPARTMENT OF TRANSPORTATION
NAME	DATE	
		WIDTH RESTRICTION SIGNING
SCALE: VERT. _____		DRAWN BY CEJ
DATE 04-25-2007		
		CHECKED BY _____

F.A.S. RTE.	SECTION	COUNTY	TOTAL SHEETS	SHEET NO.
1388	(ZC-120-BRI)	PEORIA	20	10
STA. 380+48.12 TO STA. 381+61.87				
FED. ROAD DIST. NO. 4 ILLINOIS FED. AID PROJECT				



CROSS SECTION
(Looking West)



STAGE I PLAN

DEVICE SPACING

- = 50' cts.
- = 50' cts.
- = 25' cts.
- = 25' cts.

SYMBOLS

- Work Area
- Sign
- Type III Barricade
- Drum w/steady burning light
- Double Vertical Panels w/ steady-burning lights
- Type C bidirectional reflector
- Temporary Concrete Barrier
- Impact Attenuator

REVISIONS

NAME	DATE

ILLINOIS DEPARTMENT OF TRANSPORTATION
TRAFFIC CONTROL SPECIAL

SN. 072-0137 IL.8
over Big Hollow Crk.

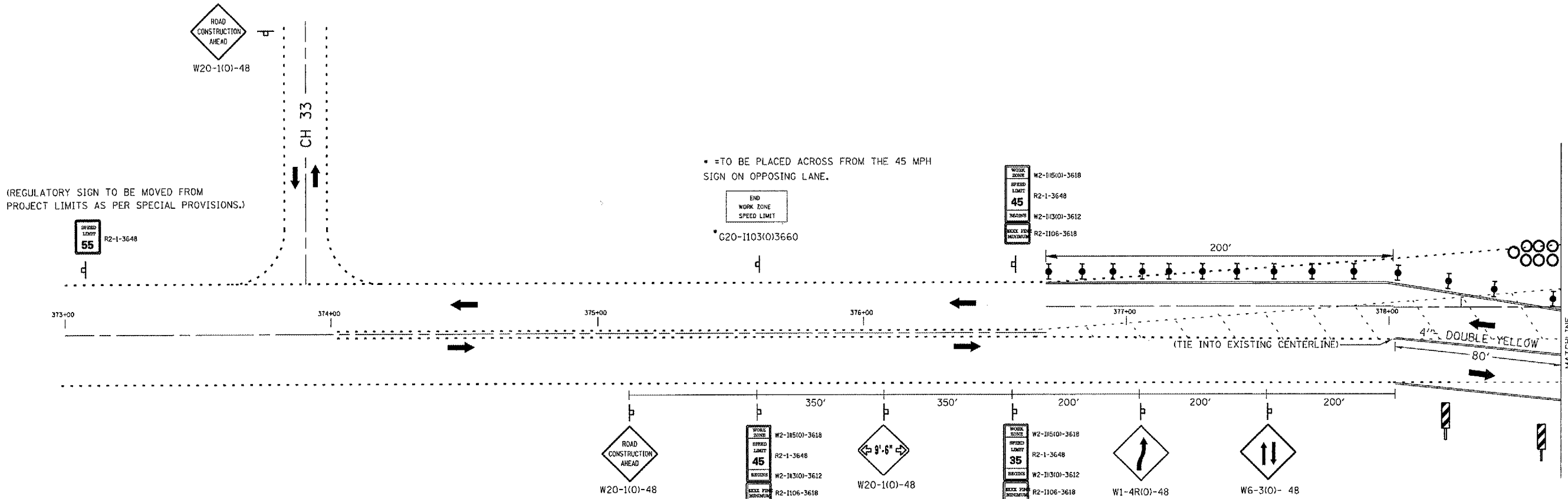
SCALE: VERT. DATE 04-25-2007
HORIZ. DRAWN BY CEJ
CHECKED BY

NOT TO SCALE

80475-18-87
 FILED IN DRAWING LIST FOR VOLUME 14 BRIDGE Rep:Contract 68475 SN072-0137 IL.8 over Big Hollow Crk. dgp
 SCALES
 SHEETS

F.A.S. RTE.	SECTION	COUNTY	TOTAL SHEETS	SHEET NO.
1388	(2C-120-BR)	PEORIA	20	11

STA. 380+48.12 TO STA. 381+61.87
FED. ROAD DIST. NO. 4 ILLINOIS FED. AID PROJECT



**STAGE I
PLAN**

	Work Area
	Sign on Portable Support
	Type III Barricade
	Drum w/ steady burning light
	Double Vertical Panels w/ steady-burning lights
	Type C bidirectional reflector
	Temporary Concrete Barrier
	Impact Attenuator

SN. 072-0137 IL.8
over Big Hollow Crk.

REVISIONS	
NAME	DATE

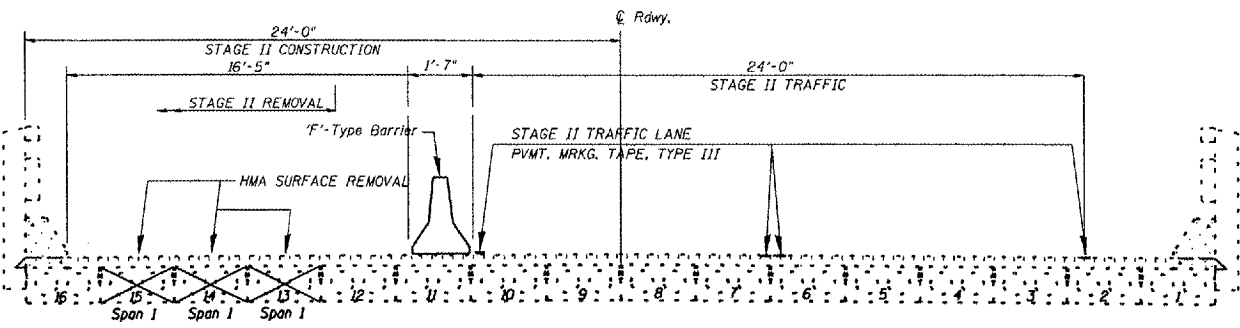
ILLINOIS DEPARTMENT OF TRANSPORTATION
**TRAFFIC CONTROL
SPECIAL**

SCALE: VERT. DRAWN BY CEJ
HORIZ. CHECKED BY
DATE 04-25-2007

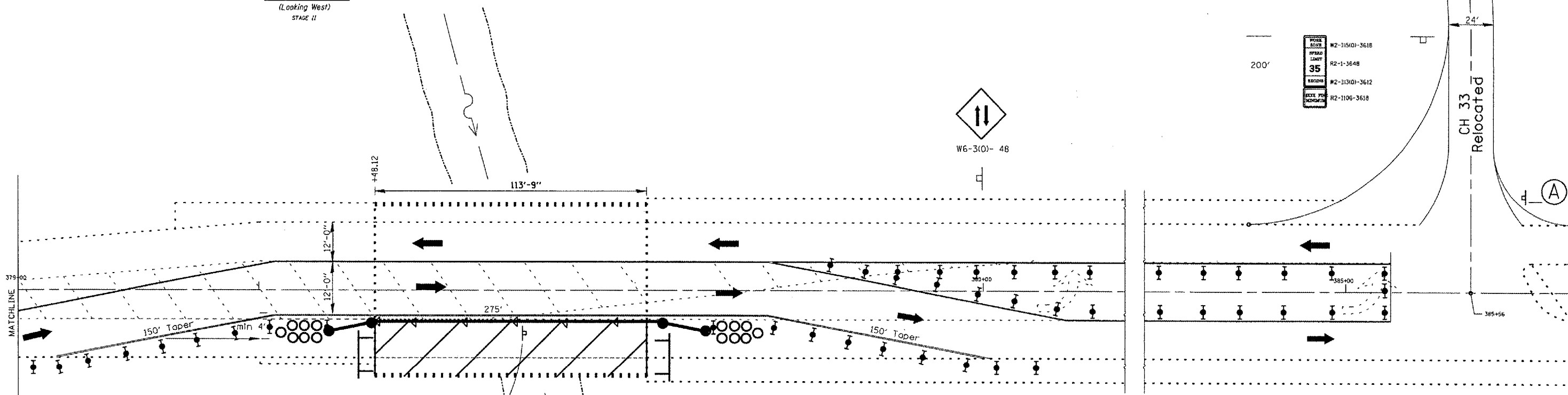
NOT TO SCALE

DATE: 04-18-07
FILE: \\G:\ENR\RAF\STAMP\MASOUND 14\BRIDGE Repr\Contract\68751\94072-0137\94072-013711\Drawings\TrafficControl.dgn
SCALE:
REF:

P.A.S. RTE.	SECTION	COUNTY	TOTAL SHEETS	SHEET NO.
1388	I2C-12D-BRD	PEORIA	20	12
STA. 380+48.12 TO STA. 381+61.87				
FED. ROAD DIST. NO. 4 ILLINOIS FED. AID PROJECT				



CROSS SECTION
(Looking West)
STAGE II



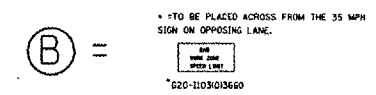
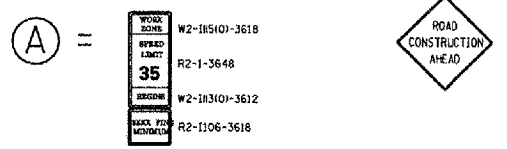
STAGE II PLAN

DEVICE SPACING

- = 50' cts.
- = 50' cts.
- = 25' cts.
- = 25' cts.

SYMBOLS

- Work Area
- Sign on Portable Support
- Type III Barricade
- Drum w/ steady burning light
- Double Vertical Panels w/ steady-burning lights
- Type C bidirectional reflector
- Temporary Concrete Barrier
- Impact Attenuator



SN. 072-0137 IL.8
over Big Hollow Crk.

REVISIONS	
NAME	DATE

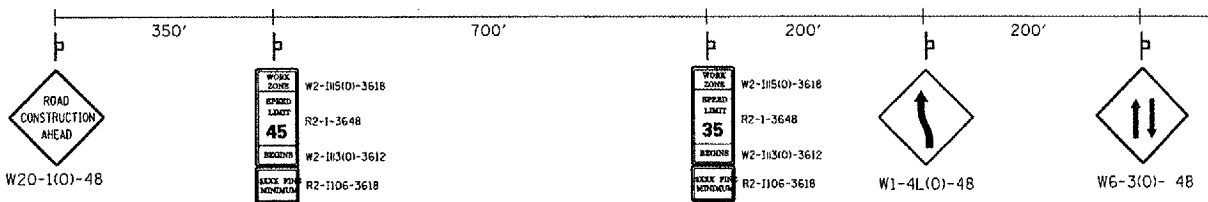
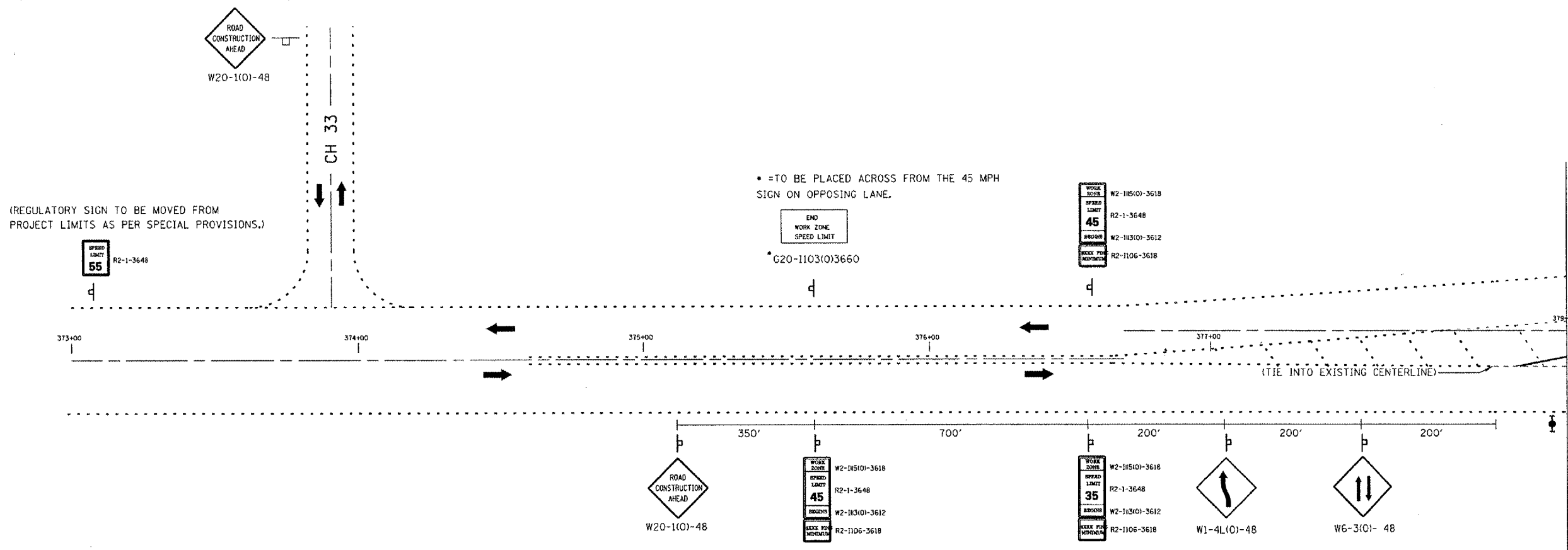
ILLINOIS DEPARTMENT OF TRANSPORTATION
TRAFFIC CONTROL SPECIAL

SCALE: VERT. HORIZ.
DATE 04-25-2007
DRAWN BY CEJ
CHECKED BY

NOT TO SCALE

NOTES: 18-87
 #FILE# GEN-DRAFT\STONPLNS\SDUAD 14\BRIDGE Repr-Contracts\68478 SN072-0137\0137IL.8-over-BigHollowCrk.dgn
 SCALE: AS SHOWN
 SHEET 12 OF 20

F.A.S. RTE.	SECTION	COUNTY	TOTAL SHEETS	SHEET NO.
1308	(2C-12D-BR)I	PEORIA	20	13
STA. 380+48.12		TO STA. 381+61.87		
FED. ROAD DIST. NO. 4		ILLINOIS FED. AID PROJECT		



**STAGE II
PLAN**

NOT TO SCALE

SYMBOLS

	Work Area
	Sign on Portable Support
	Type III Barricade
	Drum w/ steady burning light
	Double Vertical Panels w/ steady-burning lights
	Type C bidirectional reflector
	Temporary Concrete Barrier
	Impact Attenuator

REVISIONS	
NAME	DATE

SN. 072-0137 IL.8
over Big Hollow Crk.

ILLINOIS DEPARTMENT OF TRANSPORTATION

**TRAFFIC CONTROL
SPECIAL**

SCALE: VERT. 1"=40'
HORIZ. 1"=40'
DATE 04-25-2007

DRAWN BY CEJ
CHECKED BY

I:\Projects\68751\STAGE II\TRAFFIC CONTROL\STAGE II PLAN.dgn
 DATE: 04-25-2007 10:45:00 AM
 SCALE: 1"=40'
 PLOT: 04-25-2007 10:45:00 AM
 PLOT: 04-25-2007 10:45:00 AM

STATE OF ILLINOIS
DEPARTMENT OF TRANSPORTATION

ROUTE NO.	SECTION	COUNTY	TOTAL SHEETS	SHEET NO.
		Peoria	20	14
FED. ROAD DIST. NO. 7	ILLINOIS	FED. AID PROJECT		

Contract Number: 68751

GENERAL NOTES

The cut strands at each beam end shall be given two coats of zinc dust spray or paint meeting the requirements of ASTM A780. The zinc dust spray or paint shall be applied before corrosion appears and allowed to dry according to manufacturer's specifications prior to another coat of zinc. This work shall be performed by the producer and included with the cost of the beam.

Any damage done to the bridge during beam removal shall be repaired by the Contractor. Cost to be included in the cost of Removal of Existing PPC Deck Beams.

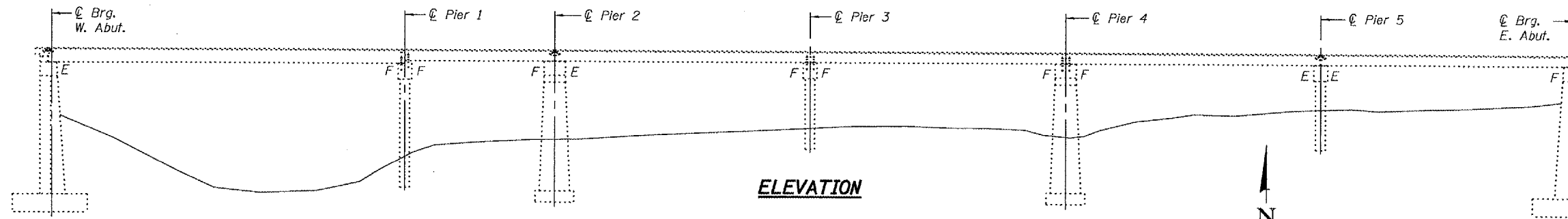
The top surface of the beams shall be finished according to the IDOT Manual for Fabrication of Precast Prestressed Concrete Products.

Plan dimensions and details relative to existing plans are subject to routine variations. The Contractor shall field verify existing dimensions and details affecting new construction and make necessary approved adjustments prior to construction or ordering of materials. Such variations shall not be cause for additional compensation for a change in scope of the work, however, the Contractor will be paid for the quantity actually furnished based upon the unit price bid for the work.

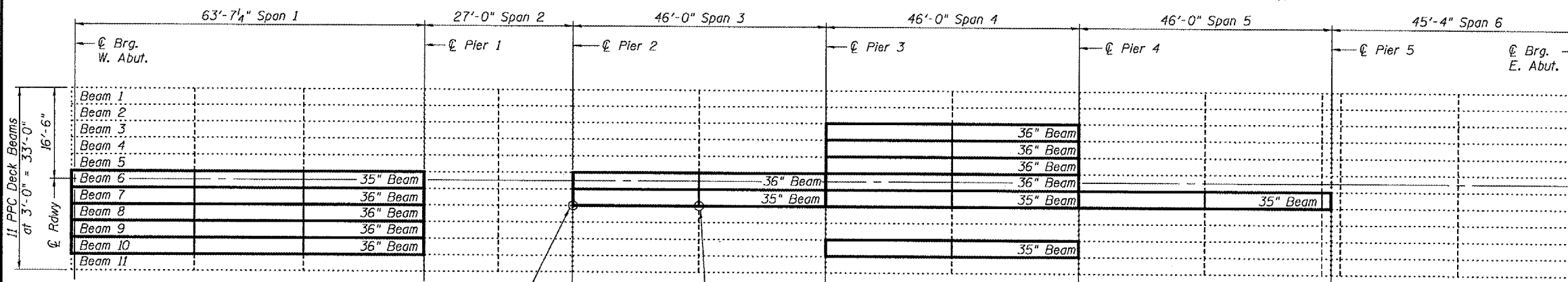
Temporary Concrete Barrier should only be anchored into the overlay and not into the PPC Deck Beams.

The contractor is advised that the existing PPC Deck Beams are in a deteriorated condition with reduced load carrying capacity. It is the contractor's responsibility to account for the condition of the beams when developing construction procedures.

If the contractor's procedure for existing beam removal or placement of new beams involves placement of cranes or other heavy equipment on the bridge, a detailed procedure shall be submitted to the Engineer for approval. The procedure shall include calculations, prepared and sealed by an Illinois Licensed Structural Engineer, verifying that the equipment and procedure used will not overstress the new or existing beams. To distribute load to multiple beams and protect the existing surface, in all cases a double layer mat of heavy timbers shall be used at all times under crane tracks or wheels and any outriggers in the down position. If necessary, shims shall be used under the crane mat to ensure uniform contact with the underlying beams. If heavy equipment will be placed on new PPC deck beams, the following shall be done prior to placement of the timber mats: placement and tightening of transverse tie assemblies, grouting and curing the dowel rods 24 hours minimum and grouting and curing the shear keys.



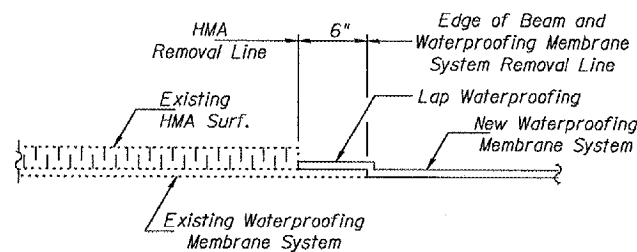
ELEVATION



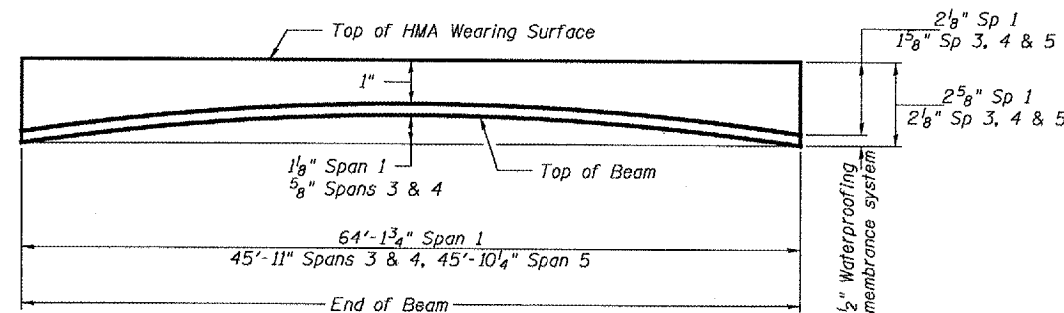
PLAN

Existing WT section to be cut flush with face of beam to remain. (Typ.)

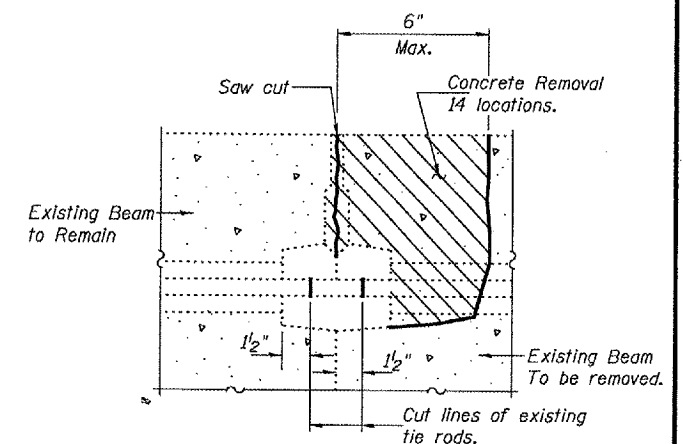
Existing tie rod to be cut see detail this sheet. (Typ.)



WATERPROOFING TREATMENT



ANTICIPATED INITIAL CAMBER DIAGRAM



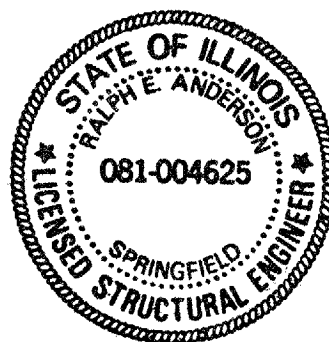
BEAM REMOVAL DETAIL AT TRANSVERSE TIES

TOTAL BILL OF MATERIAL

ITEM	UNIT	QUANTITY
Removal Existing PPC Deck Beams	Sq. Ft.	2,202
PPC Deck Beams (21" Depth)	Sq. Ft.	1,225
PPC Deck Beams (27" Depth)	Sq. Ft.	957
HMA Surface Removal	Sq. Yd.	27.6
HMA Surface Course, Mix "D", N50	Tons	29.5
Waterproofing Membrane System	Sq. Yd.	262
PC Mortar Fairing Course	Foot	981
Asbestos Bearing Pad Removal	Each	8
Furnishing and Erecting Structural Steel	Pound	852

DESIGN STRESSES

PRECAST UNITS
 $f'c = 5,000$ psi
 $f'ci = 4,000$ psi
 $f's = 270,000$ psi ($1/2$ " ϕ low lax strands)
 $f'si = 201,960$ psi ($1/2$ " ϕ low lax strands)



Expires: November 30, 2008

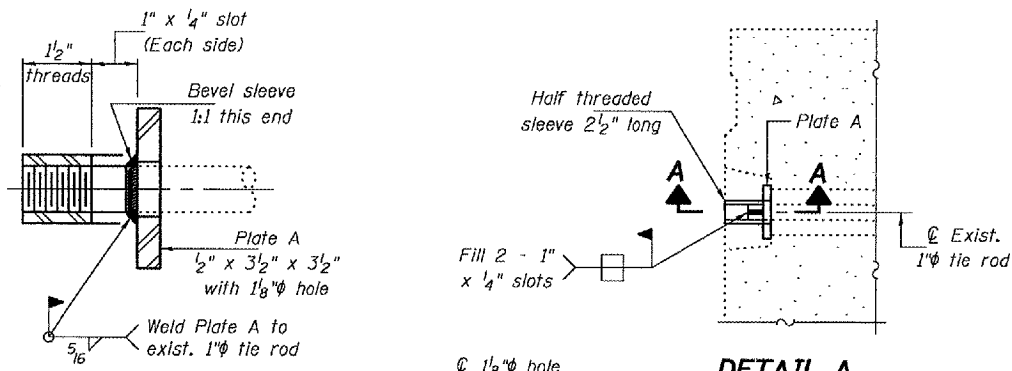
DESIGNED: Victor A. Veliz
 CHECKED: [Signature]
 DRAWN: [Signature]
 CHECKED: UHV SJB

EXAMINED: [Signature]
 PASSED: [Signature]
 ENGINEER OF BRIDGES AND STRUCTURES

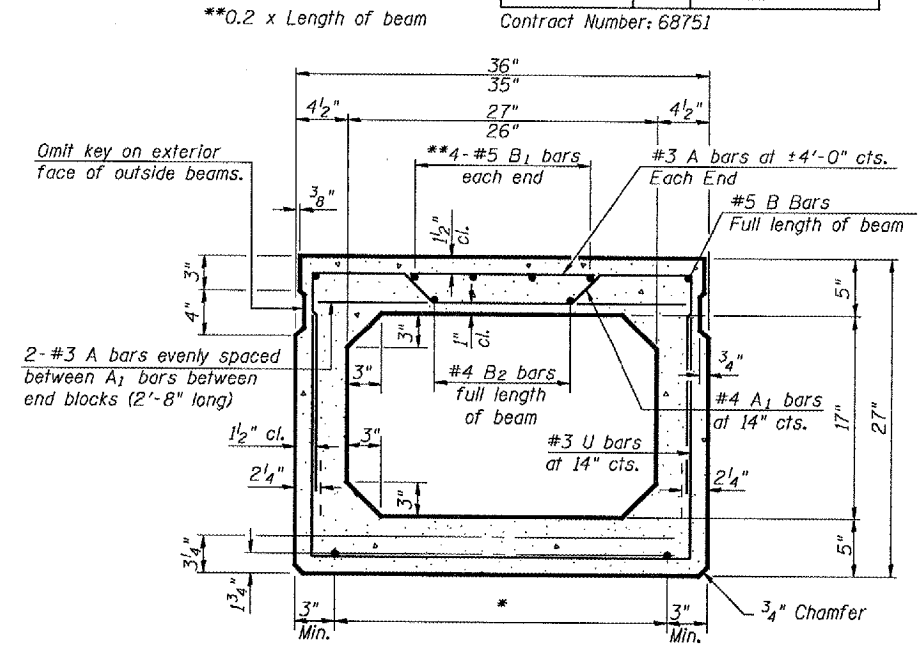
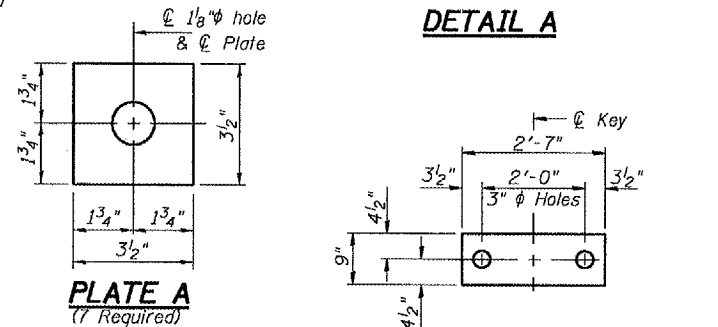
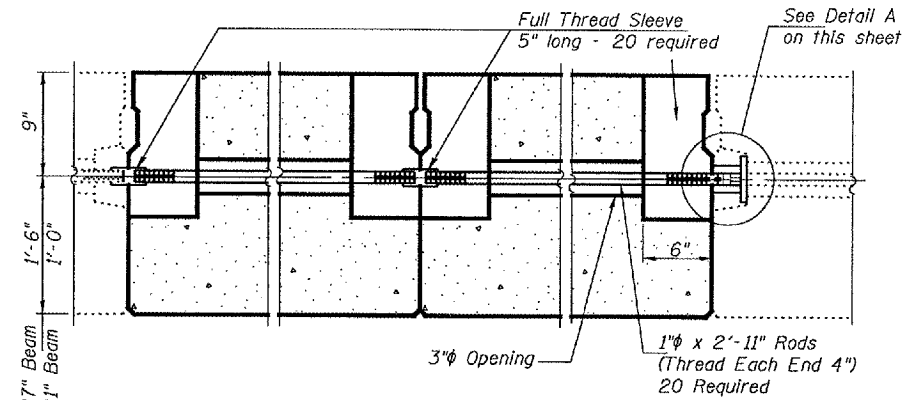
PLAN AND ELEVATION
F.A.S. RT.384
PEORIA COUNTY
SN 072-0047

STATE OF ILLINOIS
DEPARTMENT OF TRANSPORTATION

ROUTE NO.	SECTION	COUNTY	SHEET NO.	SHEET NO. 2
		Peoria	20	15
FED. ROAD DIST. NO. 7	ILLINOIS	FED. AID PROJECT	Contract Number: 68751	



6" x 6" x 11" Blockout to be filled with Class BS Concrete after Beams have been installed. Cost shall be included in the cost of PPC Deck Beams.

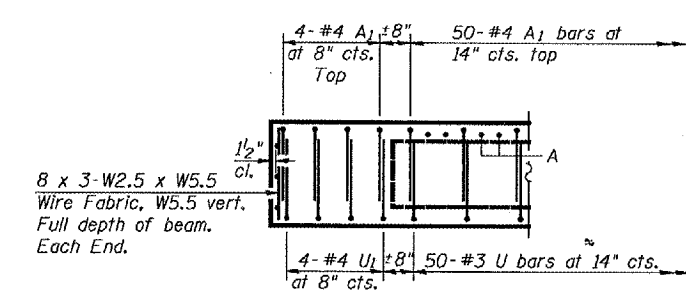
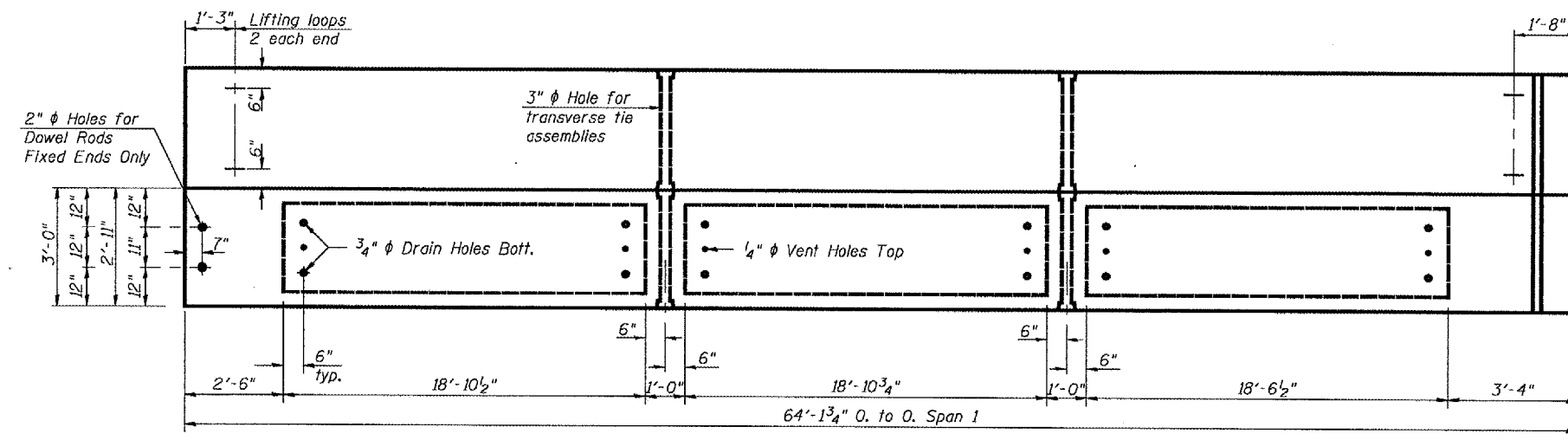


1/2" φ Strands, Each Strand Stressed to 30,900 Lbs.
6-Strands 1 3/4" up, 6-Strands 3/4" up
2-Strands 4 1/2" up

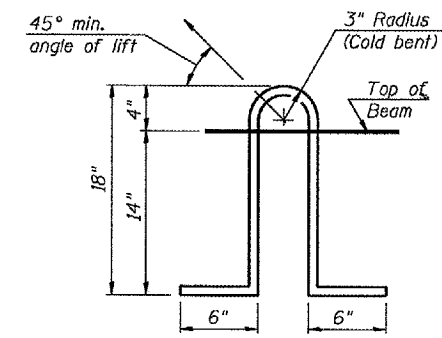
* TRANSVERSE PLACEMENT GUIDELINES

1. Place strands symmetrically about centerline of beam.
2. The minimum distance from center to center of strands in all directions shall be 2".
3. The minimum clearance from strand to dowel hole shall be 1/2".
4. The minimum clearance from strand to void shall be 1/2".

Vertical placement of strands shall not be adjusted to satisfy the above guidelines.



DESIGNED	V.H.V.	EXAMINED	June 21, 2007
CHECKED	S.J.B.	PASSED	Ralph E. Anderson
DRAWN	Drew Christopher		
CHECKED	V.H.V. S.J.B.		



NOTES

Prestressing steel shall be uncoated high strength, low relaxation 7-wire strand, Grade 270. The nominal diameter shall be 1/2" and the nominal cross-sectional area shall be 0.153 sq. in. Lifting loops shall be 2 1/2" φ for Spans 3 and 4 and 5/8" φ for Span 1 - 270 ksi strands, as shown. The 1" φ rods in the transverse tie assembly shall be tightened to a snug fit and the threads set. Pockets that receive transverse tie bar on outside shall be filled with grout after transverse tie assembly is in place.

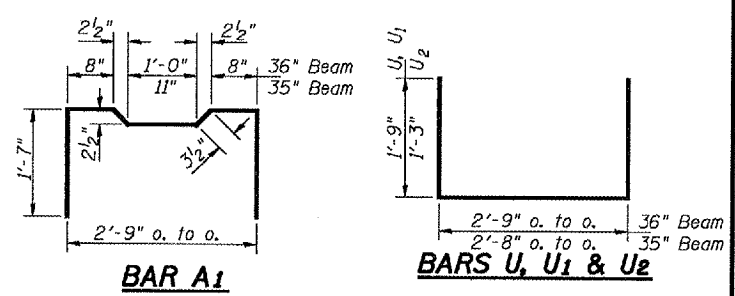
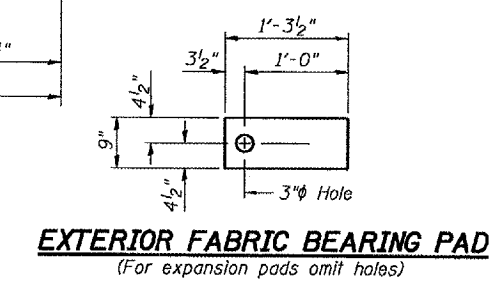
Non prestressing steel shall conform to ASTM A 706 (IL MOD), Grade 60.

The bearing seat surfaces shall be adjusted by shimming to assure firm and even bearing. Two 9" x 9" x 1/8" fabric adjusting shims shall be provided for each bearing.

Keyway surfaces shall be cleaned to remove form oil or other bond breaking material prior to shipment of the beams. Cleaning shall be done by sandblasting the keyway areas between top of the beam and the bottom edge of the key.

Corrosion Inhibitor, per Article 1020.05(b)(12) of the Standard Specifications, shall be used in the concrete for precast prestressed concrete deck beams.

Required Release Strength, f'ci, shall be 4,000 p.s.i.



BILL OF MATERIAL

PPC Deck Beams (21" Depth)	Sq. Ft.	1,225
PPC Deck Beams (27" Depth)	Sq. Ft.	957

SPAN 1 BEAM DETAILS
F.A.S. RT.384
PEORIA COUNTY
SN 072-0047

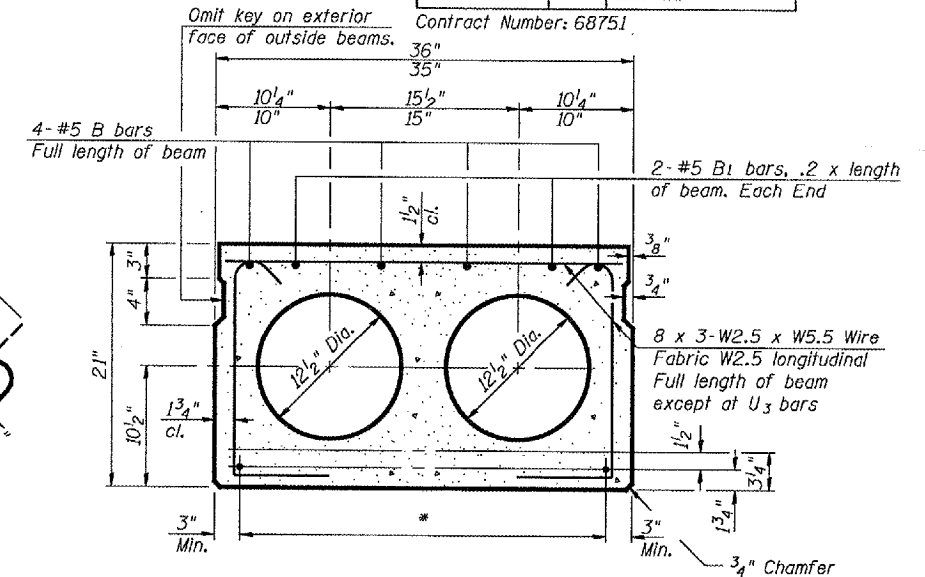
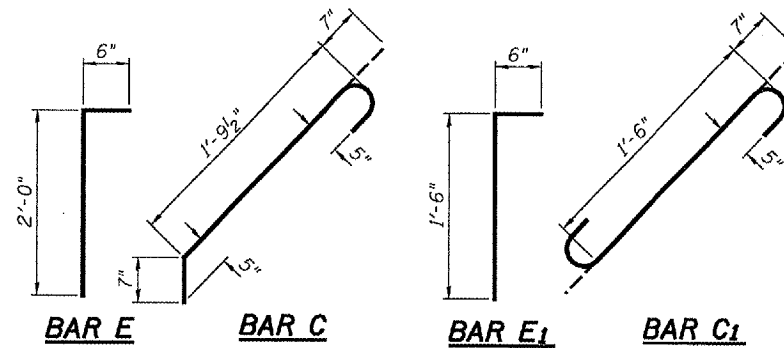
STATE OF ILLINOIS
DEPARTMENT OF TRANSPORTATION

ROUTE NO.	SECTION	COUNTY	SHEET NO.	SHEET NO.
		Peoria	20	15A
FED. ROAD DIST. NO. 7 ILLINOIS				
Contract Number: 68751				
4 SHEETS				

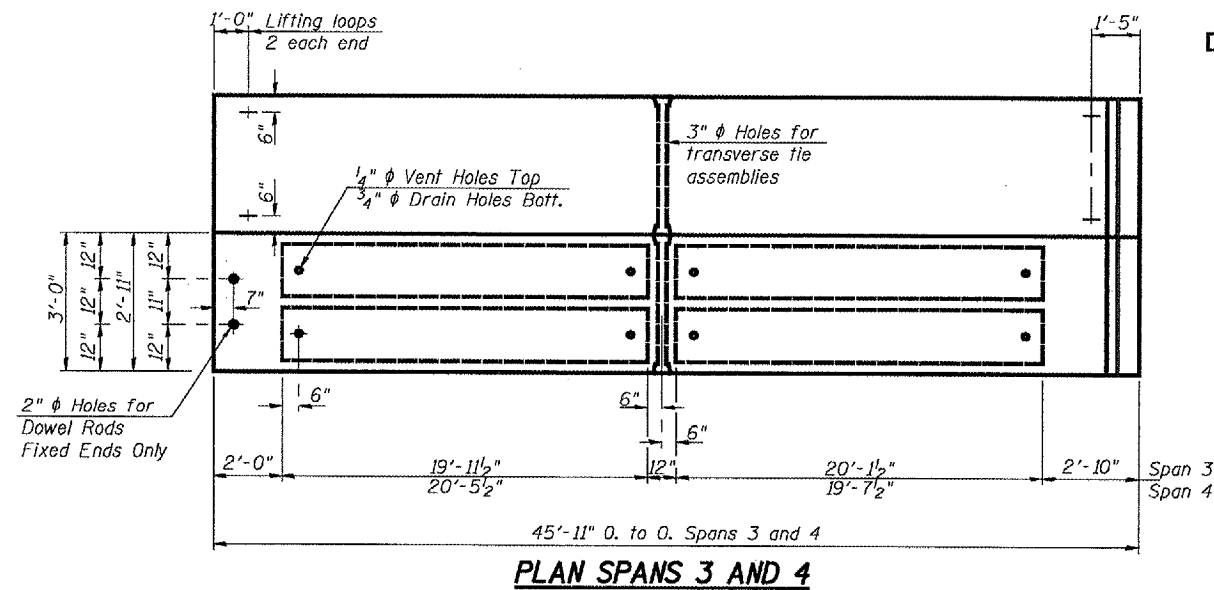
*** TRANSVERSE PLACEMENT GUIDELINES**

1. Place strands symmetrically about centerline of beam.
2. The minimum distance from center to center of strands in all directions shall be 2".
3. The minimum clearance from strand to dowel hole shall be 1/2".
4. The minimum clearance from strand to void shall be 1/2".

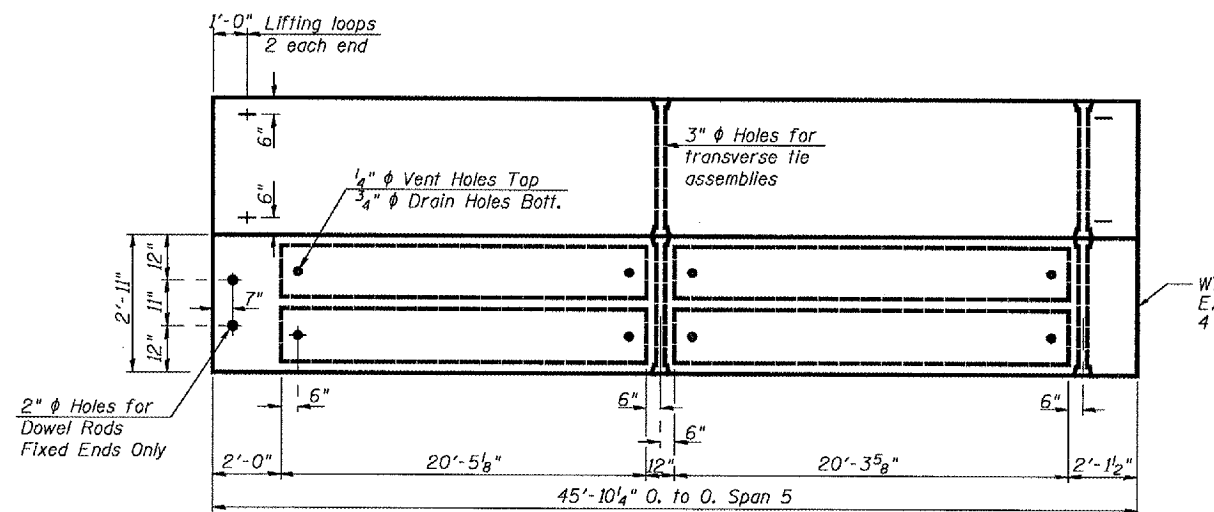
Vertical placement of strands shall not be adjusted to satisfy the above guidelines.



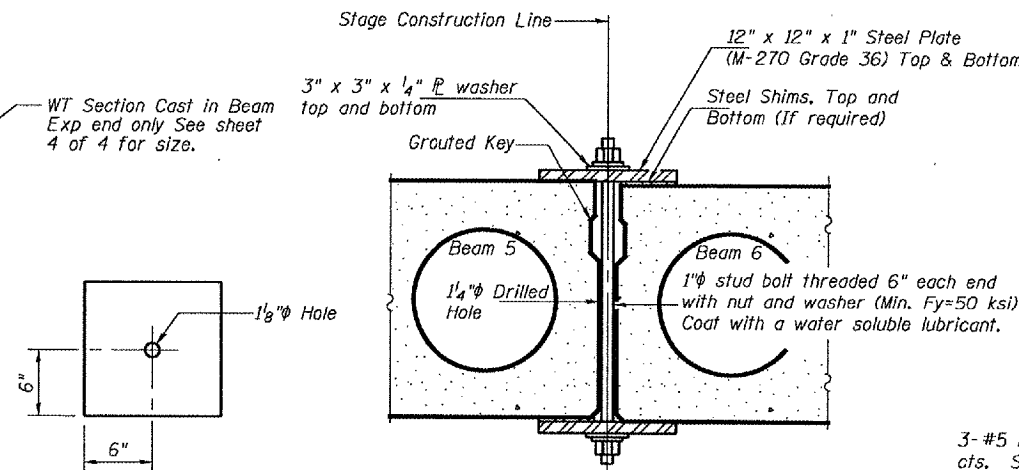
TYPICAL SECTION
1/2" ϕ Strands, Each Strand Stressed to 30,900 Lbs.
6-Strands 1 3/4" up, 4-Strands 3/4" up



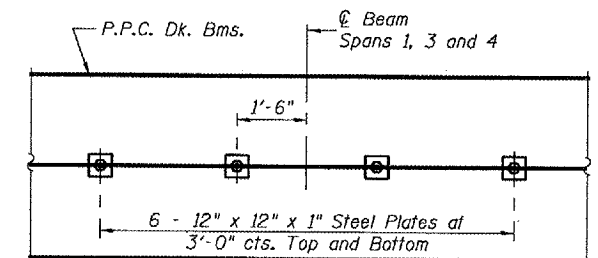
PLAN SPANS 3 AND 4



PLAN SPAN 5



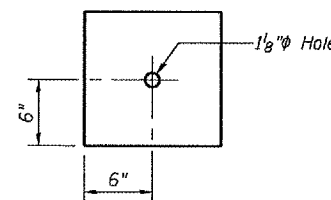
STAGE CLAMPING SECTION



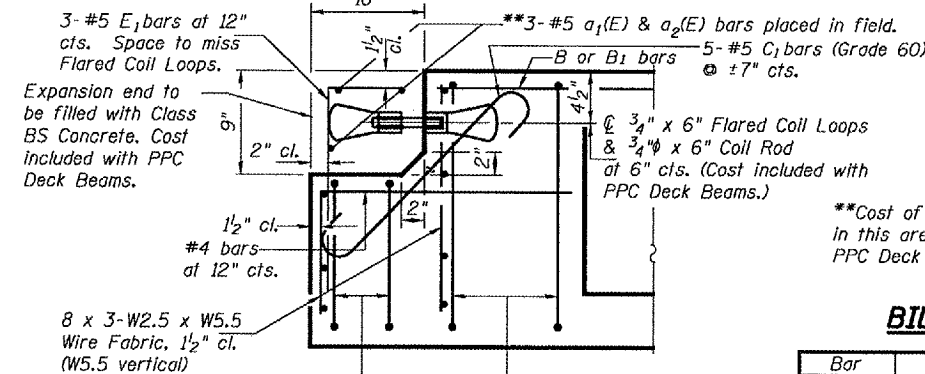
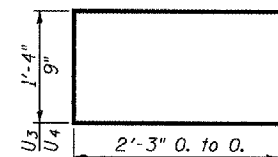
STAGE CLAMPING PLAN

Notes:
See Special Provisions for Stage Construction Precast Prestressed Concrete Deck Beams. See Stage Construction Detail for traffic lane. Cost is included with Precast Prestressed Concrete Deck Beams.

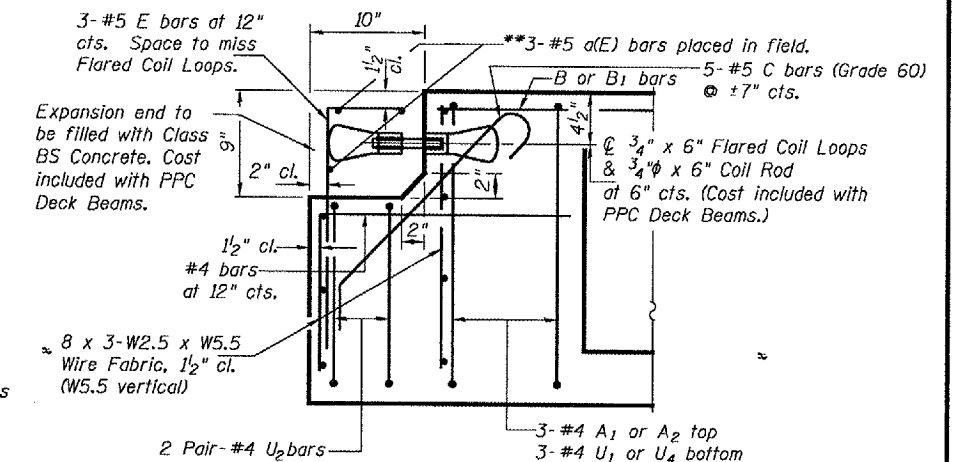
CLAMPING PLATE



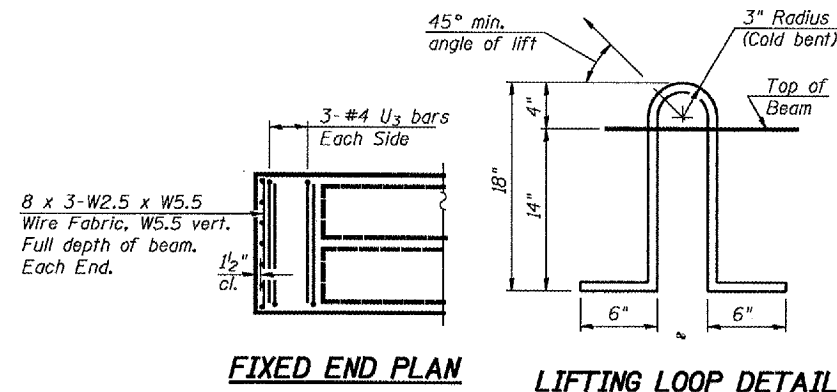
BAR U3 & U4



EXPANSION END OF 21" BEAM



EXPANSION END OF 27" BEAM



FIXED END PLAN

LIFTING LOOP DETAIL

BILL OF MATERIAL

Bar	No.	Size	Length	Shape
a(E)	3	#5	14'-8"	
a1(E)	3	#5	5'-8"	
a2(E)	3	#5	2'-8"	

SPANS 3, 4 AND 5 BEAM DETAILS
F.A.S. RT.384
PEORIA COUNTY
SN 072-0047

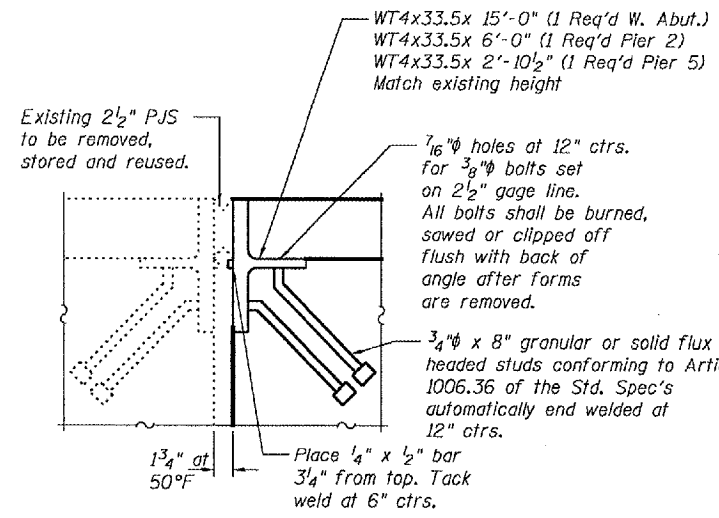
DESIGNED V.H.V.
CHECKED S.J.B.
DRAWN Drew Christopher
CHECKED V.H.V. S.J.B.
PD-3-S

June 21, 2007
EXAMINED *Carl Kroyer*
PASSED *Ralph E. Anderson*
REPAIR PLANS UNIT CHIEF
ENGINEER OF BRIDGES AND STRUCTURES

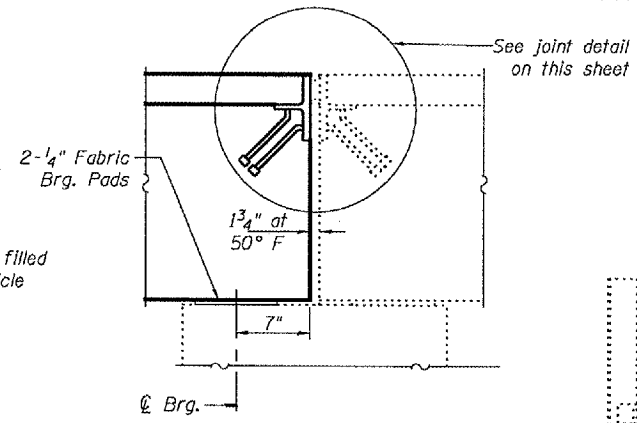
For beam notes see sheet 2 of 4.

STATE OF ILLINOIS
DEPARTMENT OF TRANSPORTATION

ROUTE NO.	SECTION	COUNTY	TOTAL SHEETS	SHEET NO.	SHEET NO. 4
		Peoria	20	15B	4 SHEETS
FED. ROAD DIST. NO. 7	ILLINOIS	FED. AID PROJECT	Contract Number: 68751		



EXPANSION JOINT DETAIL

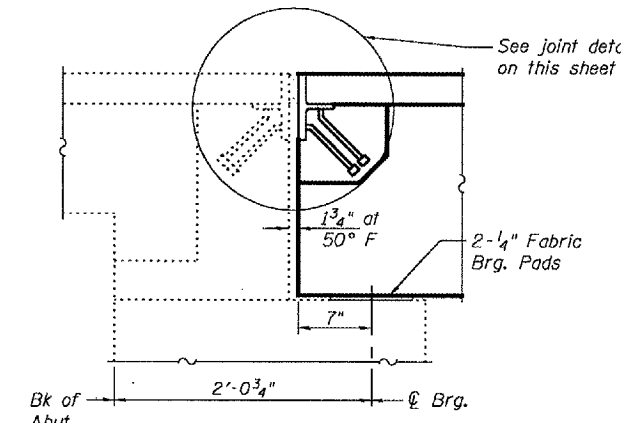


TYPICAL PIER 5 SECTION

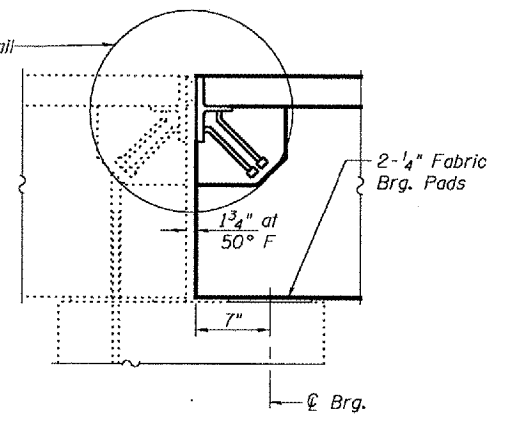
*1" Joint shall be filled with non-shrink grout. Dimension may vary to accommodate tolerance in beam lengths.

**Existing dowel rods are to be burned off, ground flush, and sealed with epoxy prior to placement of new beams. Cost included in Removal of Existing PPC Deck Beams. After beams have been erected holes shall be drilled into cap and dowel rods placed. Dowel holes shall be filled with non-shrink grout to top of beam and allowed to cure a minimum of 24 hours prior to grouting the shear keys.

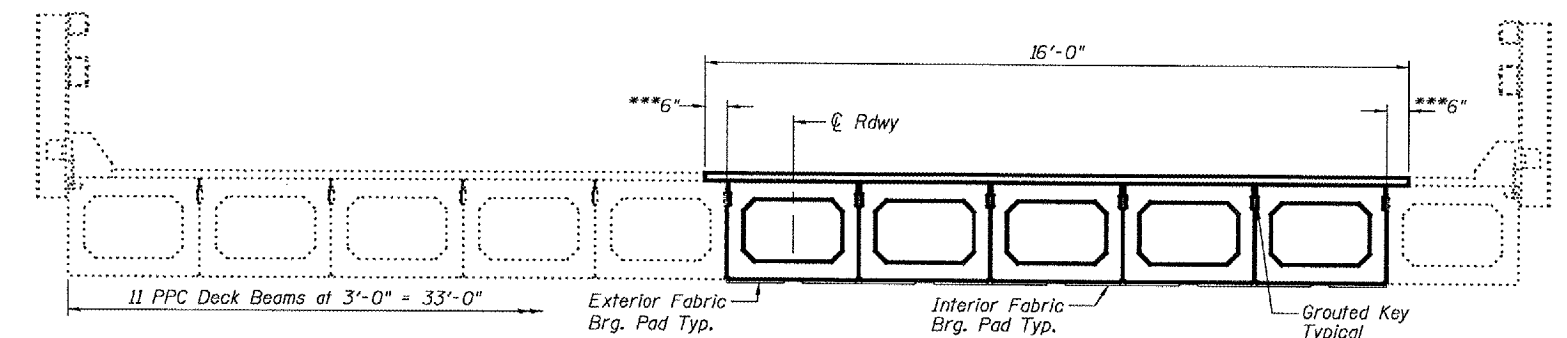
*** Limits of HMA surface removal (Typ.)



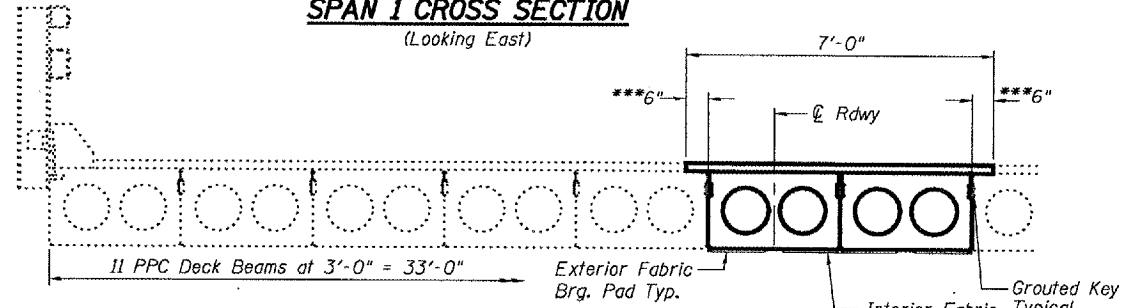
TYPICAL WEST ABUTMENT SECTION



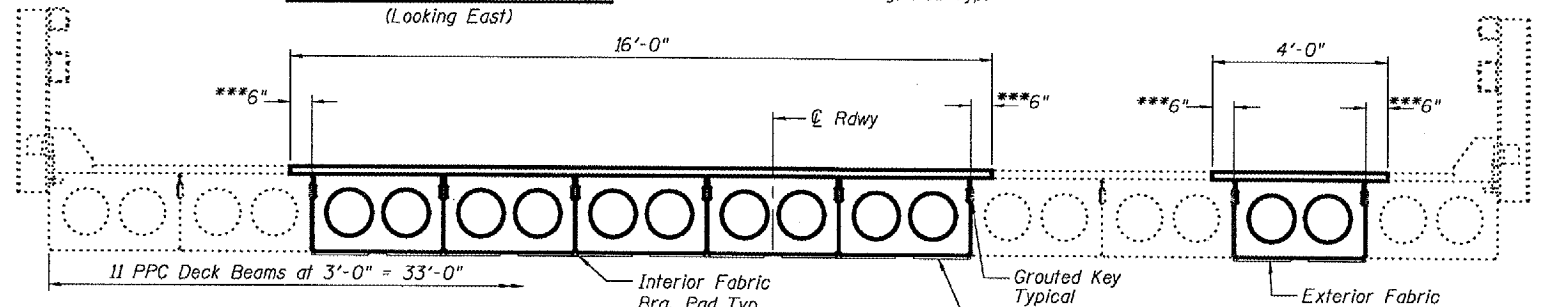
TYPICAL PIER 2 SECTION



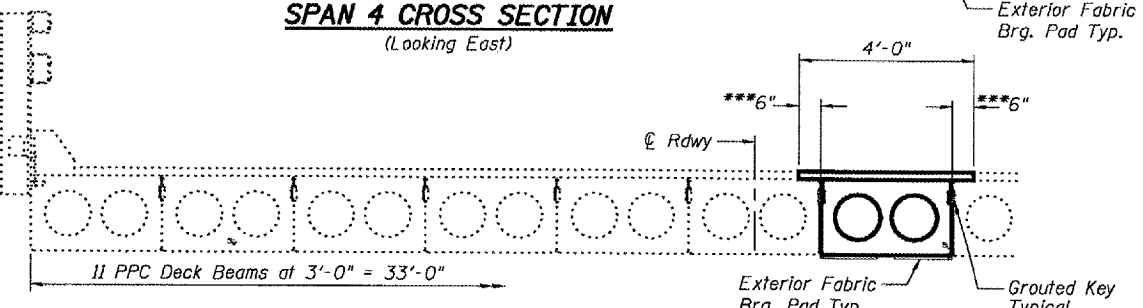
SPAN 1 CROSS SECTION (Looking East)



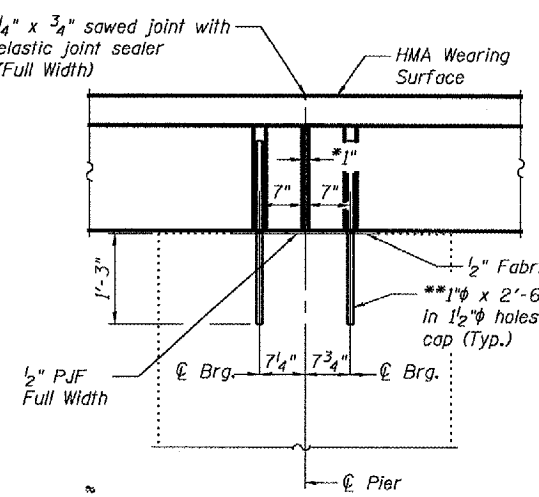
SPAN 3 CROSS SECTION (Looking East)



SPAN 4 CROSS SECTION (Looking East)

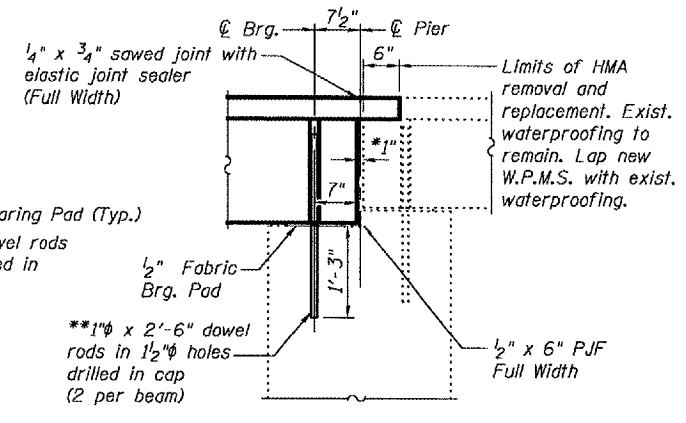


SPAN 5 CROSS SECTION (Looking East)



TYPICAL SECTION AT PIERS 3 AND 4

(Pier 4 Beam Line 7 shown, all other beam lines similar to Pier 1 Section)



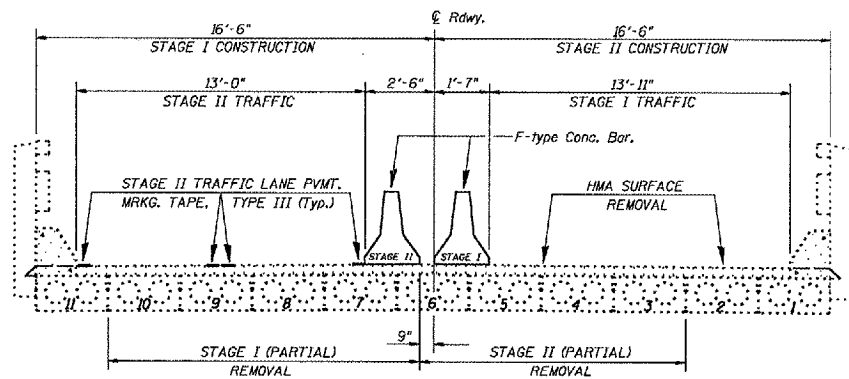
TYPICAL PIER 1 SECTION

DESIGNED	V.H.V.
CHECKED	S.J.B.
DRAWN	Drew Christopher
CHECKED	V.H.V. S.J.B.

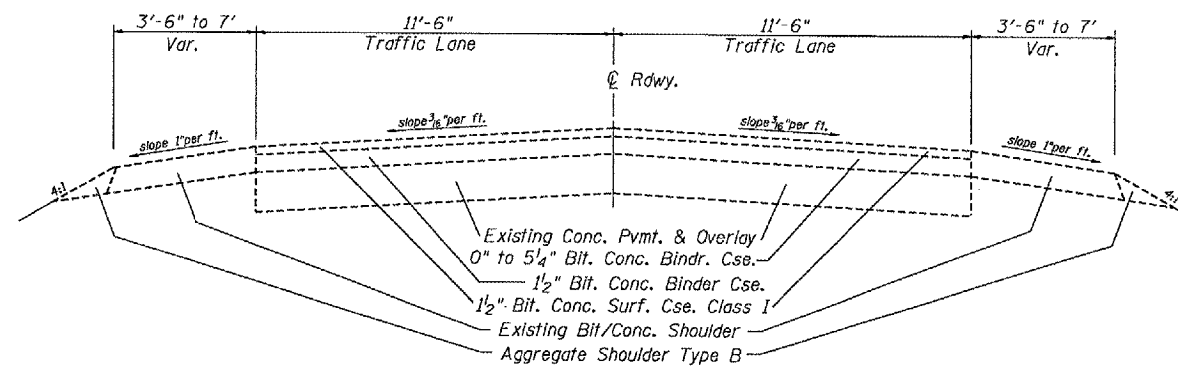
DATE	June 21, 2007
EXAMINED	<i>Carl Proyer</i>
PASSED	<i>Ralph E. Anderson</i>
REPAIR PLANS UNIT CHIEF	ENGINEER OF BRIDGES AND STRUCTURES

TYPICAL SECTIONS
F.A.S. RT.384
PEORIA COUNTY
SN 072-0047

F.A.S. RTE.	SECTION	COUNTY	TOTAL SHEETS	SHEET NO.
1388	12-10-BR-111-1	PEORIA	20	16
STA. 98+73.33		TO STA. 103+58.67		
FED. ROAD DIST. NO. 4		ILLINOIS FED. AID PROJECT		

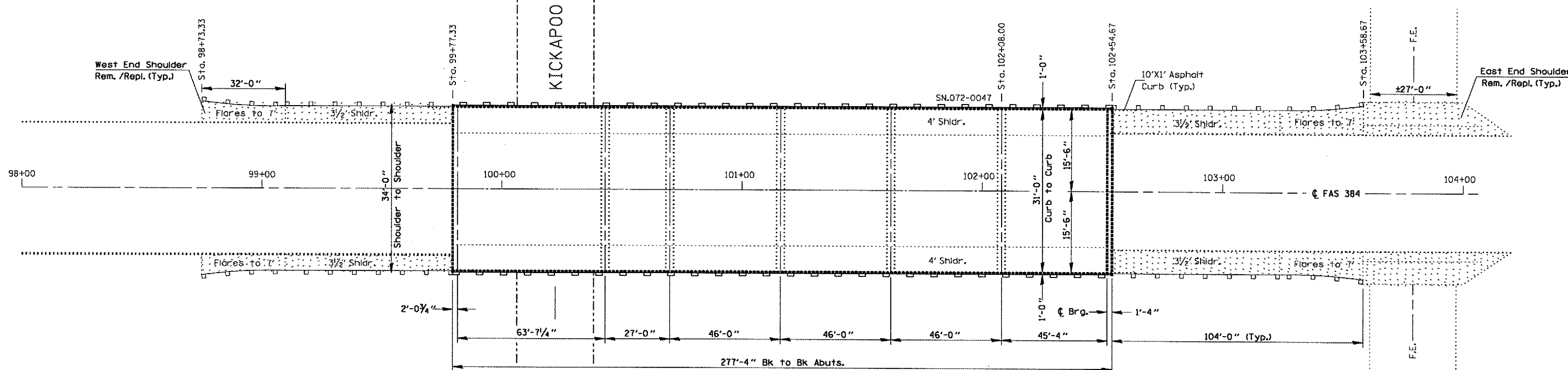


CROSS SECTION (Looking West)



TYPICAL DETAIL

Sta. 97+27.33 to Sta. 99+77.33
Sta. 102+54.67 to Sta. 104+04.67



PLAN

SHOULDER QUANTITY SCHEDULE

SHOULDER REMOVAL			
LEFT WEST APPROACH	SQ.YD.	LEFT EAST APPROACH	SQ.YD.
Sta. 98+73.00 to Sta. 99+77.33	45.8	Sta. 102+54.67 to Sta. 104+00	77.8
RIGHT WEST APPROACH	SQ.YD.	RIGHT EAST APPROACH	SQ.YD.
Sta. 98+73.00 to Sta. 99+77.33	45.8	Sta. 102+54.67 to Sta. 104+00	77.8
TOTAL		247.2	
SHOULDER REPLACEMENT			
LEFT WEST APPROACH	SQ.YD.	LEFT EAST APPROACH	SQ.YD.
Sta. 98+73.00 to Sta. 99+77.33	45.8	Sta. 102+54.67 to Sta. 104+00	77.8
RIGHT WEST APPROACH	SQ.YD.	RIGHT EAST APPROACH	SQ.YD.
Sta. 98+73.00 to Sta. 99+77.33	45.8	Sta. 102+54.67 to Sta. 104+00	77.8
TOTAL		247.2	

BILL OF MATERIAL

ITEM	UNIT	QUANTITY
HOT MIX ASPHALT BASE COURSE WIDENING, 9"	SQ.YD.	248
BITUMINOUS CONCRETE SHOULDER REMOVAL	SQ.YD.	248
MOBILIZATION	LSUM	1.0
WIDTH RESTRICTION SIGNING	LSUM	1.0
TRAFFIC CONTROL AND PROTECTION, STANDARD 701321	EACH	1.0
PAVEMENT MARKING TAPE, TYPE III, 4"	FOOT	1130
WORKZONE PAVEMENT MARKING REMOVAL	FOOT	1130
TEMPORARY CONCRETE BARRIER	FOOT	408
RELOCATE TEMPORARY CONCRETE BARRIER	FOOT	408
EPOXY PAVEMENT MARKING-LINE 4"	FOOT	1330
PAVEMENT MARKING REMOVAL	SQ.FT.	444
IMPACT ATTENUATORS, TEMPORARY (NRD), TEST LEVEL 2	EACH	2.0
IMPACT ATTENUATORS, RELOCATE (NRD), TEST LEVEL 2	EACH	2.0

NOTES

Refer to Highway Standard 701321 for exact placement of traffic management devices and other clarifications as construction staging symbols and dimensioning were duplicated off of this standard. Shoulder removal and replacement shall be complete prior to shifting existing traffic lanes for staging. Concrete Barrier staging placement shall be as required for the specified emergency beam replacement. ReflectORIZED temporary pavement marking tape shall be placed throughout and along side the work area. The edge line shall be yellow for left-hand lane closures.

SN. 072-0047 IL.8
over Kickapoo Crk.

REVISIONS	
NAME	DATE

ILLINOIS DEPARTMENT OF TRANSPORTATION

GENERAL LAYOUT & SHOULDER REM/REPL.

SCALE: VERT. HORIZ. DATE 05-10-2007

DRAWN BY CEJ CHECKED BY

STATE OF ILLINOIS
DEPARTMENT OF TRANSPORTATION

ROUTE NO.	SECTION	COUNTY	TOTAL SHEETS	SHEET NO.	SHEET NO. 1
		Peoria	20	17	4 SHEETS
FED. ROAD DIST. NO. 7	ILLINOIS	FED. AID PROJECT-			

Contract Number: 6B751

GENERAL NOTES

The cut strands at each beam end shall be given two coats of zinc dust spray or paint meeting the requirements of ASTM A780. The zinc dust spray or paint shall be applied before corrosion appears and allowed to dry according to manufacturer's specifications prior to another coat of zinc. This work shall be performed by the producer and included with the cost of the beam.

Any damage done to the bridge during beam removal shall be repaired by the Contractor. Cost to be included in the cost of Removal of Existing PPC Deck Beams.

The top surface of the beams shall be finished according to the IDOT Manual for Fabrication of Precast Prestressed Concrete Products.

Plan dimensions and details relative to existing plans are subject to routine variations. The Contractor shall field verify existing dimensions and details affecting new construction and make necessary approved adjustments prior to construction or ordering of materials. Such variations shall not be cause for additional compensation for a change in scope of the work, however, the Contractor will be paid for the quantity actually furnished based upon the unit price bid for the work.

Temporary Concrete Barrier should only be anchored into the overlay and not into the PPC Deck Beams.

The contractor is advised that the existing PPC Deck Beams are in a deteriorated condition with reduced load carrying capacity. It is the contractor's responsibility to account for the condition of the beams when developing construction procedures.

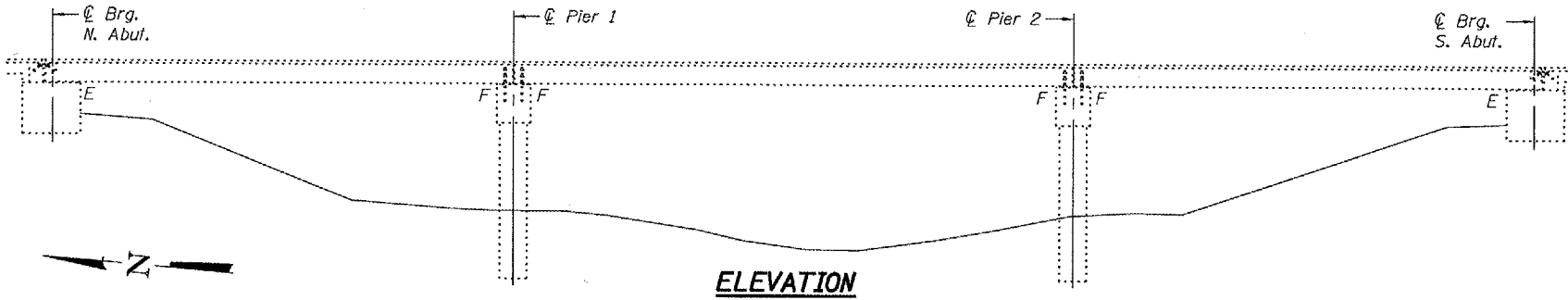
If the contractor's procedure for existing beam removal or placement of new beams involves placement of cranes or other heavy equipment on the bridge, a detailed procedure shall be submitted to the Engineer for approval. The procedure shall include calculations, prepared and sealed by an Illinois Licensed Structural Engineer, verifying that the equipment and procedure used will not overstress the new or existing beams. To distribute load to multiple beams and protect the existing surface, in all cases a double layer mat of heavy timbers shall be used at all times under crane tracks or wheels and any outriggers in the down position. If necessary, shims shall be used under the crane mat to ensure uniform contact with the underlying beams. If heavy equipment will be placed on new PPC deck beams, the following shall be done prior to placement of the timber mats: placement and tightening of transverse tie assemblies, grouting and curing the dowel rods 24 hours minimum and grouting and curing the shear keys.

Reinforcement bars shall conform to the requirements of ASTM A 706 Gr 60 (IL Modified). See Special Provisions.

Reinforcement bars designated (E) shall be epoxy coated. The existing structural steel coating contains lead. The Contractor shall take appropriate precautions to deal with the presence of lead on this project.

All structural steel shall conform to AASHTO Classification M-270 Gr. 36, unless otherwise noted.

Protective coat shall not be applied to surfaces to which waterproofing membrane system is applied. Protective coat shall be applied to the curb and exposed vertical surfaces of the fascia beams that require replacement.



	34'-0 1/4" Span 1	41'-3" Span 2	34'-0 1/4" Span 3
Beam 1	36" Beam		36" Beam
Beam 2	36" Beam		36" Beam
Beam 3			
Beam 4			
Beam 5			36" Beam
Beam 6			36" Beam
Beam 7			35" Beam
Beam 8			
Beam 9			
Beam 10			
Beam 11			
Beam 12			
Beam 13	36" Beam		
Beam 14	36" Beam		
Beam 15	35" Beam		
Beam 16			36" Beam

16 PPC Deck Beams at 3'-0" = 48'-0"

24'-0" Roadway

Existing WT section to be cut flush with face of beam to remain. (Typ.)

DESIGN STRESSES

FIELD UNITS

f'c = 3,500 psi

fy = 60,000 psi (Reinforcement)

PRECAST PRESTRESSED UNITS

f'c = 5,000 psi

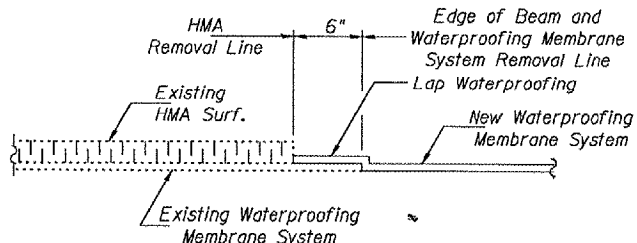
f'ci = 4,000 psi

f's = 270,000 psi (1/2" phi low lax strands)

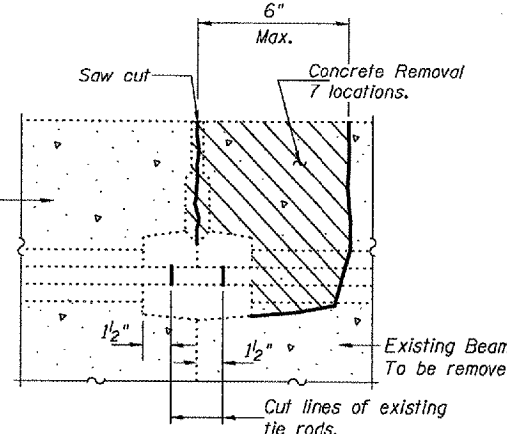
f'si = 201,960 psi (1/2" phi low lax strands)

PLAN

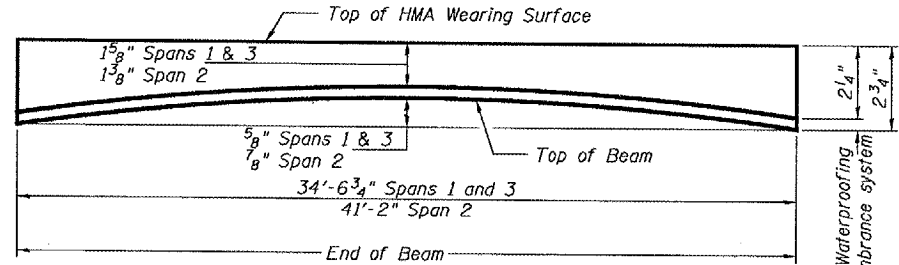
Existing tie rod to be cut see detail this sheet (Typ.)



WATERPROOFING TREATMENT



BEAM REMOVAL DETAIL AT TRANSVERSE TIES



ANTICIPATED INITIAL CAMBER DIAGRAM

TOTAL BILL OF MATERIAL

ITEM	UNIT	QUANTITY
Removal of Existing PPC Deck Beams	Sq. Ft.	1,160
PPC Deck Beams (17" Depth)	Sq. Ft.	1,155
HMA Surface Removal	Sq. Yd.	14.0
HMA Surface Course, Mix "D", N50	Tons	14.4
Waterproofing Membrane System	Sq. Yd.	132.5
PC Mortar Fairing Course	Foot	456
Asbestos Bearing Pad Removal	Each	10
Furnishing and Erecting Structural Steel	Pound	1,070
Removing and Re-erecting Existing Railing	Foot	110.5
Concrete Superstructures	Cu. Yd.	3.7
Protective Coat	Sq. Yd.	50
Reinforcement Bars Epoxy Coated	Pound	80

PLAN AND ELEVATION
F.A.S. RT. 384
PEORIA COUNTY
SN 072-0137

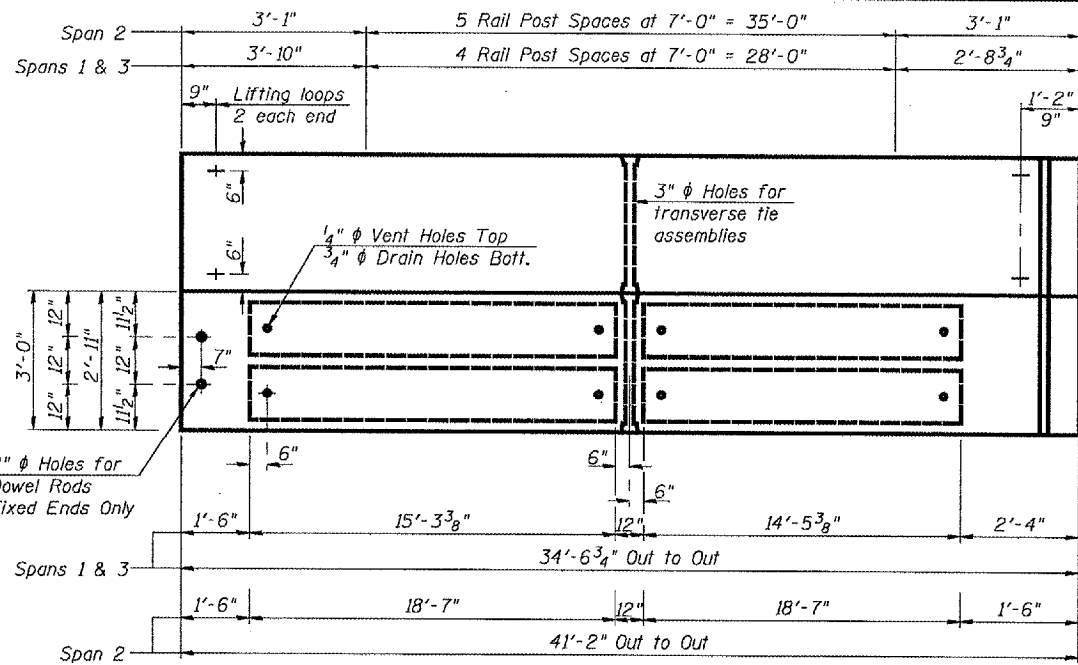
DESIGNED Victor H. Velj
CHECKED [Signature]
DRAWN [Signature]
CHECKED VHV SJB

EXAMINED [Signature] June 21, 2007
PASSED [Signature]
ENGINEER OF BRIDGES AND STRUCTURES

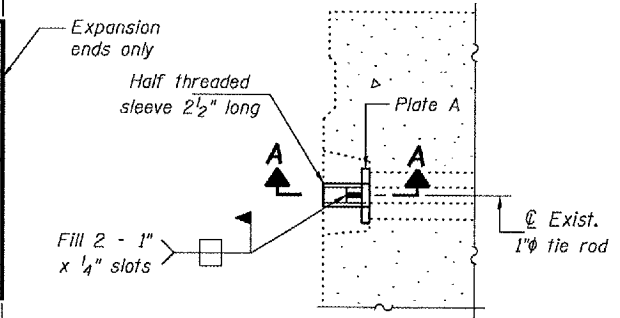
Expires: November 30, 2008

STATE OF ILLINOIS
DEPARTMENT OF TRANSPORTATION

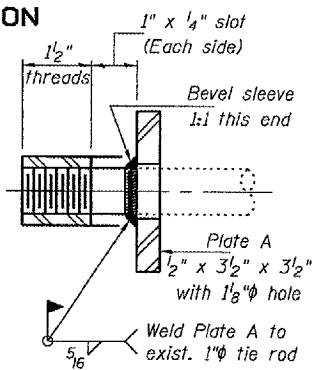
ROUTE NO.	SECTION	COUNTY	TOTAL SHEETS	SHEET	SHEET NO. 2
		Peoria	20	18	4 SHEETS
FED. ROAD DIST. NO. 7		ILLINOIS	FED. AID PROJECT		Contract Number: 68751



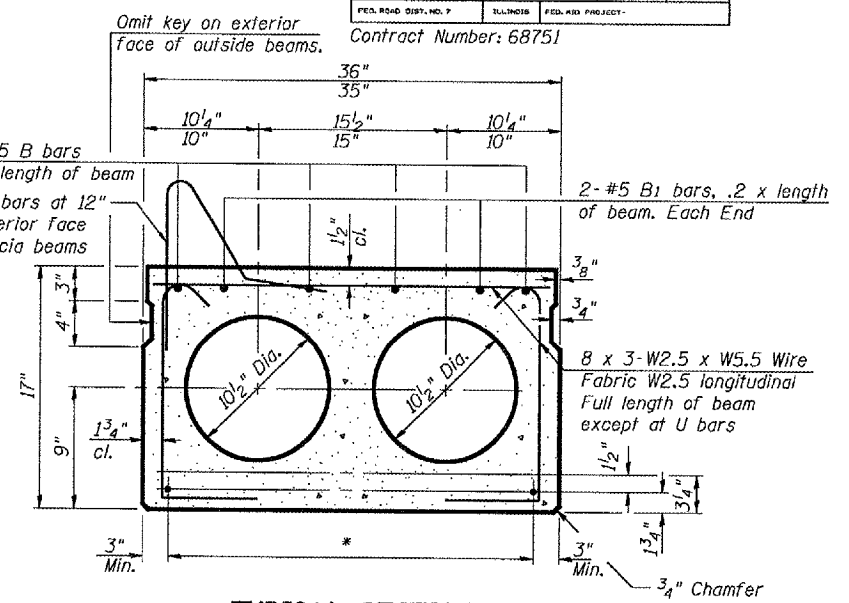
PLAN



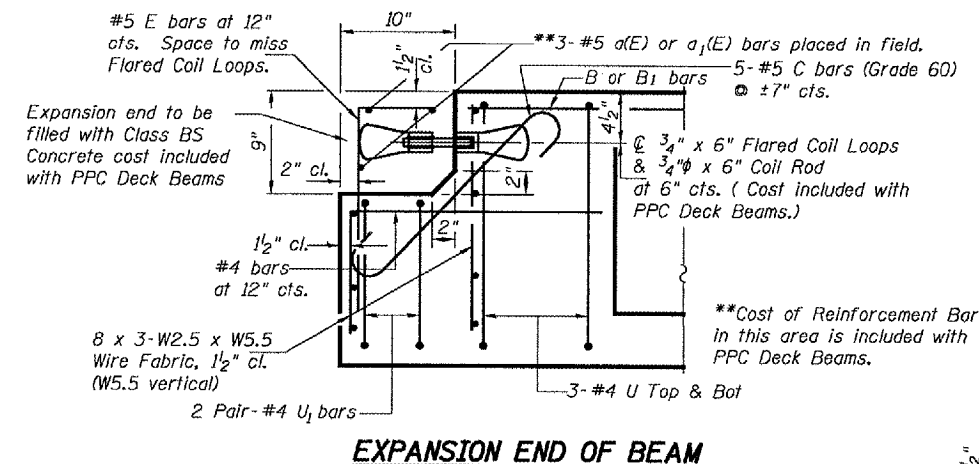
DETAIL A



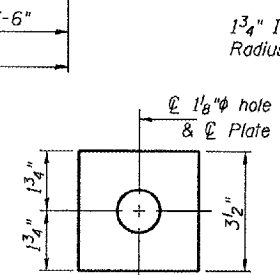
SECTION A-A
(5 Required)



TYPICAL SECTION



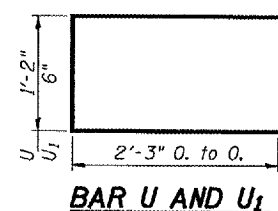
EXPANSION END OF BEAM



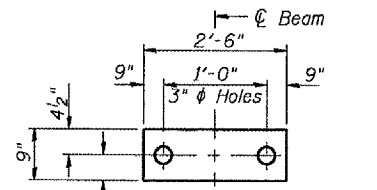
BAR D



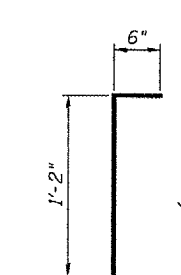
PLATE A
(5 Required)



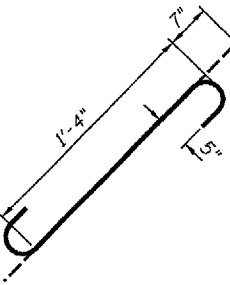
BAR U AND U₁



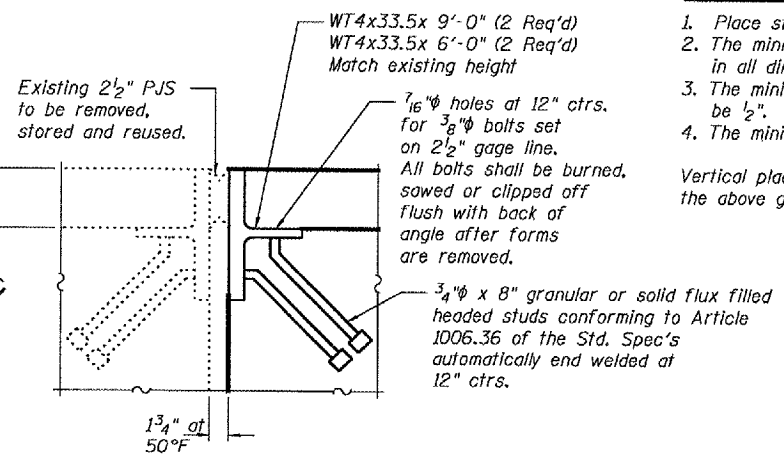
FABRIC BEARING PAD
(For Expansion Pads Omit Holes)



BAR E



BAR C



ABUTMENT JOINT DETAIL

* TRANSVERSE PLACEMENT GUIDELINES

1. Place strands symmetrically about centerline of beam.
2. The minimum distance from center to center of strands in all directions shall be 2".
3. The minimum clearance from strand to dowel hole shall be 1/2".
4. The minimum clearance from strand to void shall be 1/2".

Vertical placement of strands shall not be adjusted to satisfy the above guidelines.

BILL OF MATERIAL

Bar	No.	Size	Length	Shape
a(E)	6	#5	8'-11"	—
a ₁ (E)	6	#5	5'-11"	—
e(E)	4	#6	18'-0"	—
e ₁ (E)	2	#6	21'-3"	—
Precast Prestressed Conc Deck Bms. (17" Depth)			Sq. Ft.	1,149
Reinforcement Bars Epoxy Coated			Pound	80

NOTES

Prestressing steel shall be uncoated high strength, low relaxation 7-wire strand, Grade 270. The nominal diameter shall be 1/2" and the nominal cross-sectional area shall be 0.153 sq. in. Lifting loops shall be 2 - 1/2" ϕ -270 ksi strands, as shown.

The 1" ϕ rods in the transverse tie assembly shall be tightened to a snug fit and the threads set. Pockets that receive transverse tie bar on outside shall be filled with grout after transverse tie assembly is in place.

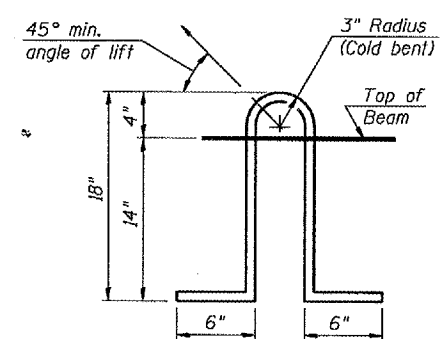
Non prestressing steel shall conform to ASTM A 706 (IL MOD), Grade 60.

The bearing seat surfaces shall be adjusted by shimming to assure firm and even bearing. Two 9" x 9" x 1/8" fabric adjusting shims shall be provided for each bearing.

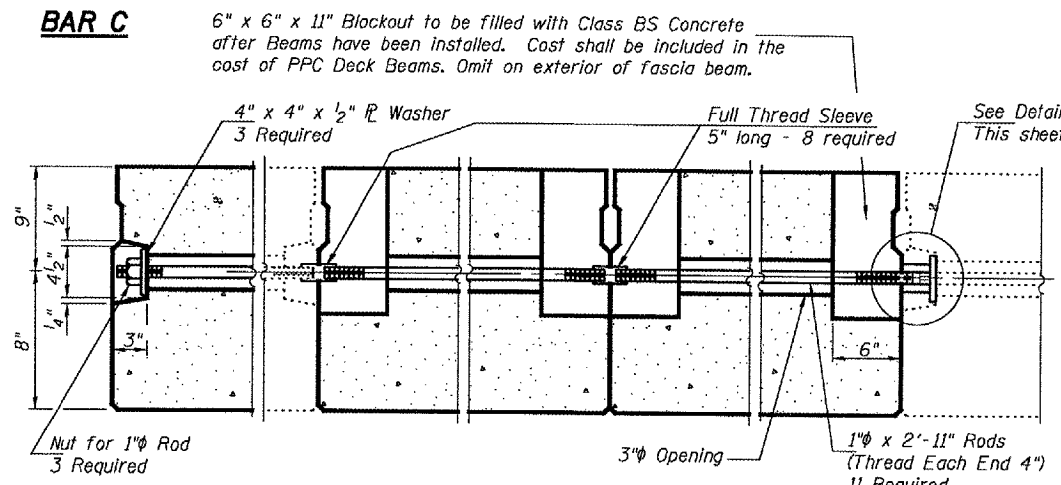
Keyway surfaces shall be cleaned to remove form oil or other bond breaking material prior to shipment of the beams. Cleaning shall be done by sandblasting the keyway areas between top of the beam and the bottom edge of the key.

Corrosion inhibitor, per Article 1020.05(b)(12) of the Standard Specifications, shall be used in the concrete for precast prestressed concrete deck beams.

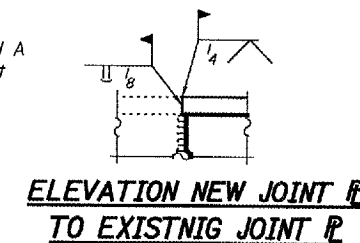
Required Release Strength, f'ci, shall be 4,000 p.s.i.



LIFTING LOOP DETAIL



TYPICAL TRANSVERSE TIE ASSEMBLY



DESIGNED V.H.V.	EXAMINED June 21, 2007
CHECKED S.J.B.	PASSED <i>Carl Prosky</i> REPAIR PLANS UNIT CHIEF
DRAWN Drew Christopher	PASSED <i>Ralph E. Anderson</i> ENGINEER OF BRIDGES AND STRUCTURES
CHECKED V.H.V. S.J.B.	

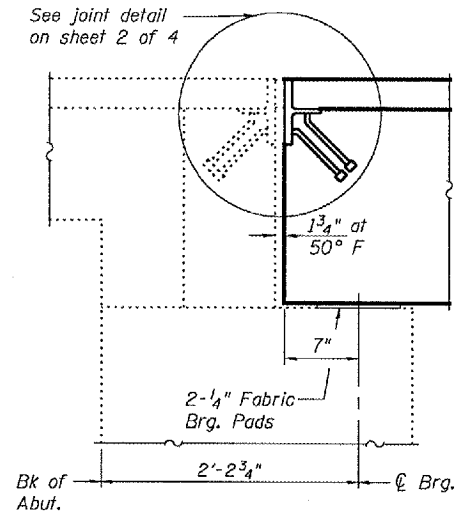
PD-3-S 11-1-06

BEAM DETAILS
F.A.S. RT. 384
PEORIA COUNTY
SN 072-0137

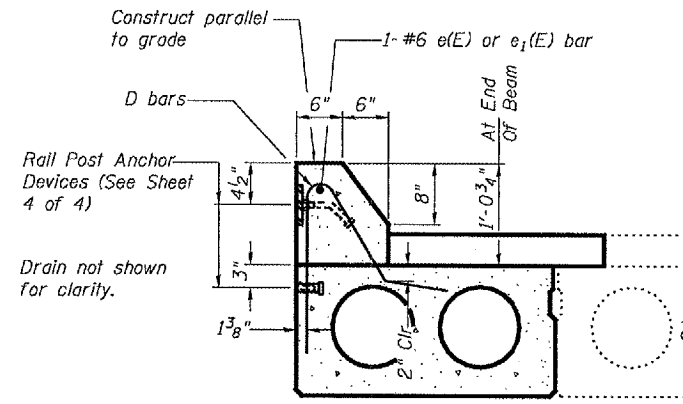
STATE OF ILLINOIS
DEPARTMENT OF TRANSPORTATION

ROUTE NO.	SECTION	COUNTY	TOTAL SHEETS	SHEET NO.
		Peoria	20	19
FED. AID PROJ. NO. 7		ALIGNED	FED. AID PROJECT	

SHEET NO. 3
4 SHEETS
Contract Number: 68751

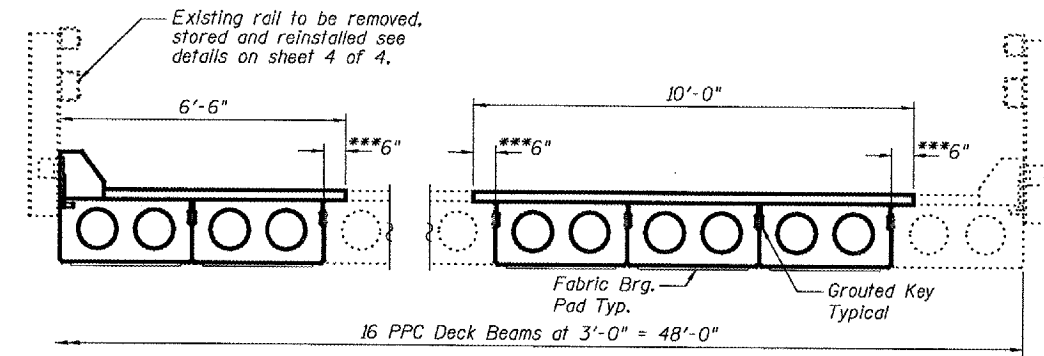


TYPICAL ABUTMENT SECTION



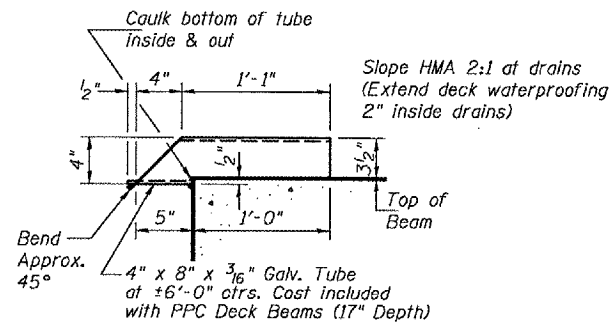
TYPICAL SECTION THRU CURB

(Curbs are to be poured in the field, cost included with Concrete Superstructure)



SPAN 1 CROSS SECTION

(Looking South)

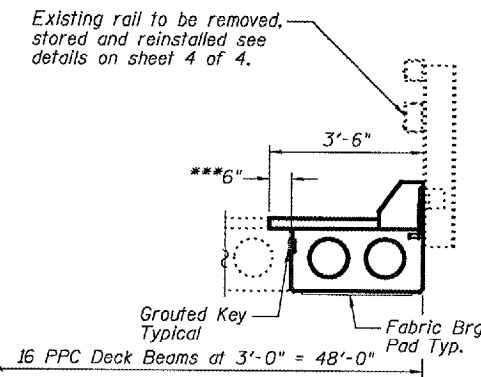


DRAIN DETAIL

*1" Joint shall be filled with non-shrink grout. Dimension may vary to accommodate tolerance in beam lengths.

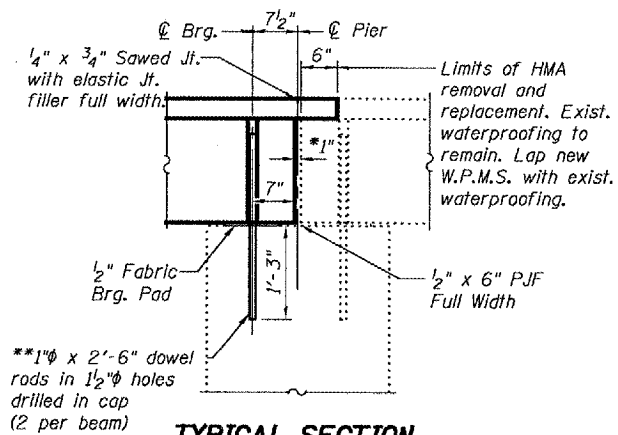
**Existing dowel rods are to be burned off, ground flush, and sealed with epoxy prior to placement of new beams. Cost included in Removal of Existing PPC Deck Beams. After beams have been erected holes shall be drilled into cap and dowel rods placed. Dowel holes shall be filled with non-shrink grout to top of beam and allowed to cure a minimum of 24 hours prior to grouting the shear keys.

***Limits of HMA surface removal (Typ.)

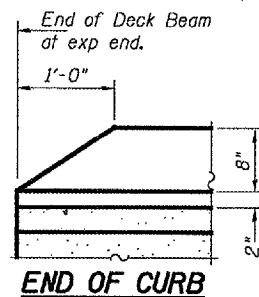


SPAN 2 CROSS SECTION

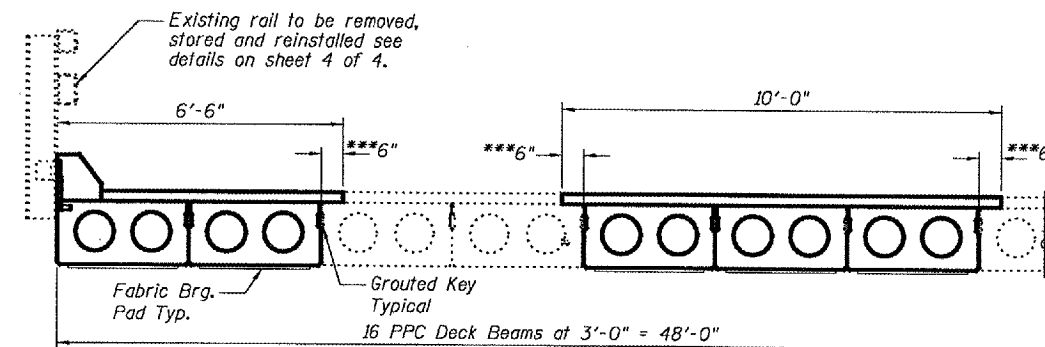
(Looking South)



TYPICAL SECTION AT PIERS



END OF CURB



SPAN 3 CROSS SECTION

(Looking South)

DESIGNED	V.H.V.
CHECKED	S.J.B.
DRAWN	Drew Christopher
CHECKED	V.H.V. S.J.B.

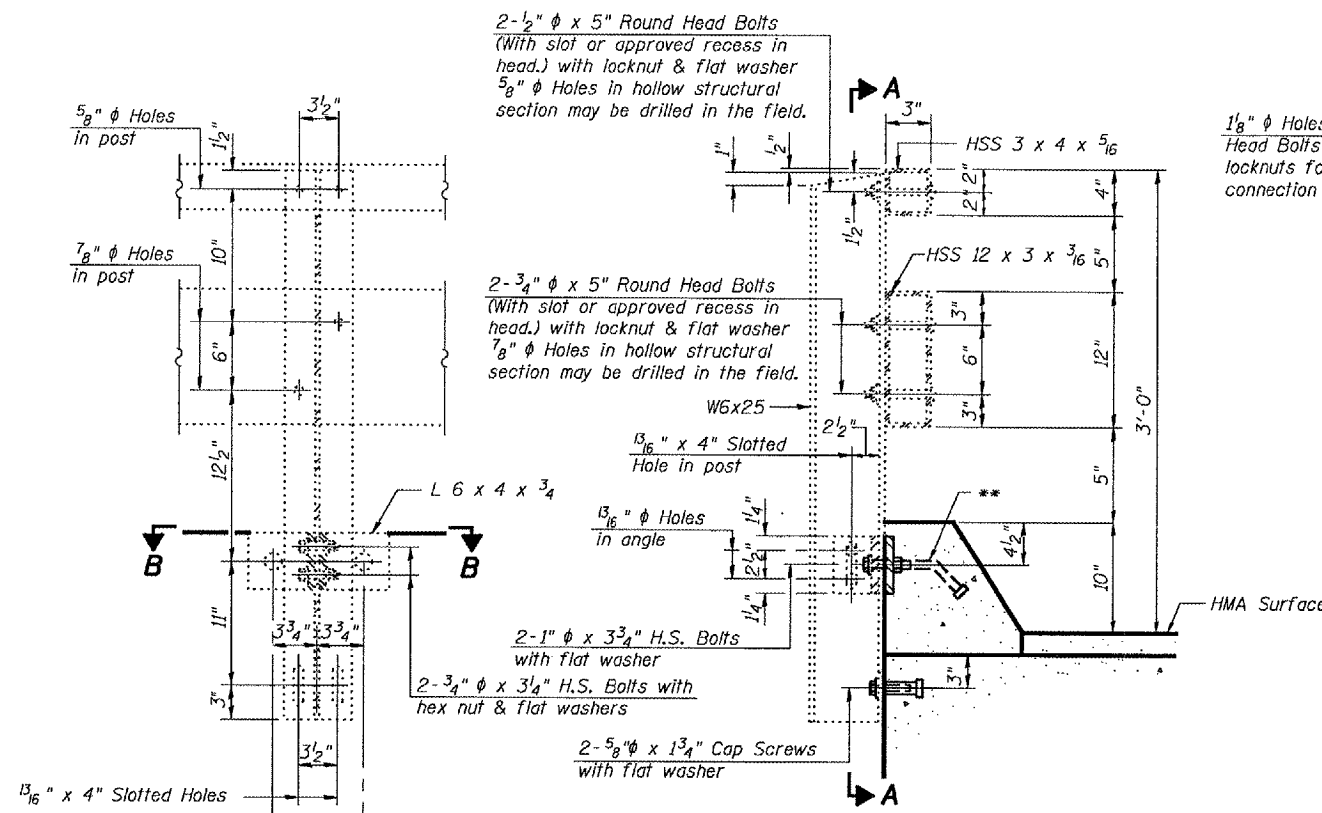
EXAMINED	June 21, 2007
PASSED	Ralph E. Anderson

BEAM DETAILS
F.A.S. RT. 384
PEORIA COUNTY
SN 072-0137

STATE OF ILLINOIS
DEPARTMENT OF TRANSPORTATION

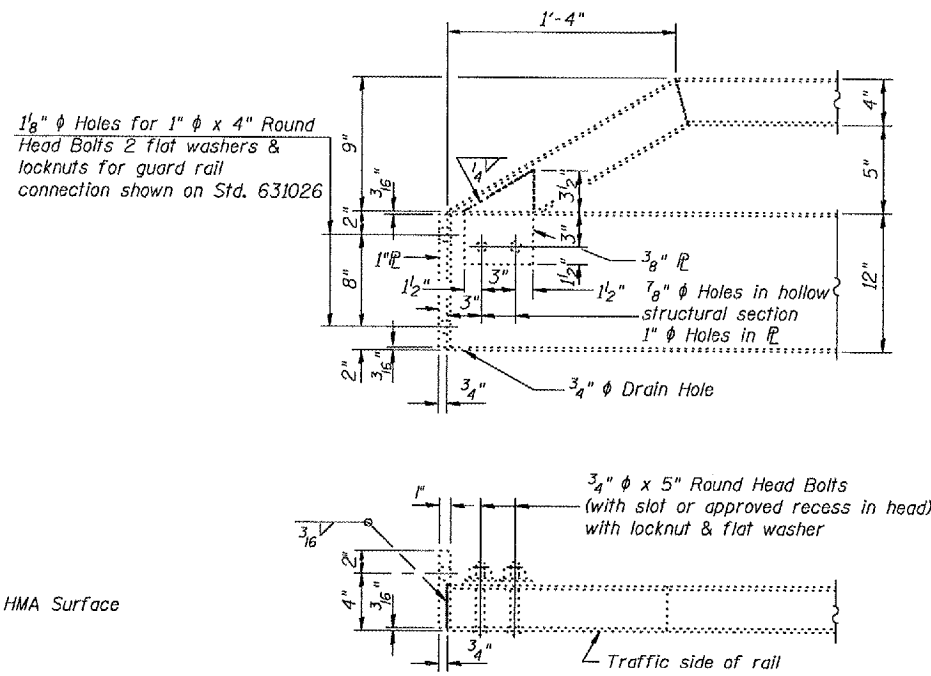
ROUTE NO.	SECTION	COUNTY	SHEET NO.	SHEET NO.
		Peoria	20	28
FED. ROAD DIST. NO. 7		ILLINOIS	FED. AID PROJECT	

Contract Number: 68751



SECTION AT RAIL POST

SECTION A-A



END OF RAIL DETAILS

NOTES

Bolts, cap screws, and nuts shall conform to the requirements of ASTM designation A 307 except for high strength bolts nuts and washers noted which shall conform to AASHTO M 164.

All bolts, nuts, cap screws, washers and lock washers shall be galvanized according to AASHTO M 232.

Anchor devices shall be galvanized after shop fabrication according to AASHTO M 111 and ASTM A 385. Cost of anchorage devices is included with the cost of Precast Concrete Deck Beams (17" Depth).

For multi-span bridges, sufficient 1/4" x 6" x 1'-3 1/2" galvanized steel shims shall be provided to align rail between adjacent spans.

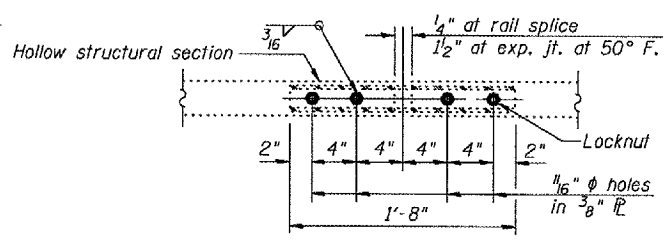
The lower portion of the post flange in contact with concrete shall receive two coats of asphalt paint conforming to Section 1060.07 Type II or place new 1/8" fabric bearing pad between the post and concrete. Fabric bearing pads shall meet the requirements of Article 1082.01 of the Standard Specifications.

The 3/4" φ high strength bolts used to connect the 6x4x3/4 angles to the post shall be tightened according to Article 505.04(f)(2) of the Standard Specifications. The 1" φ high strength bolts connecting the angles to the concrete shall be tightened to a snug fit and given an additional 1/8 turn. The 5/8" φ cap screws in bottom of posts shall be tightened to a snug fit only.

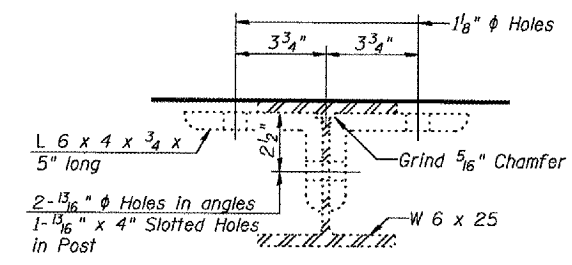
Removal and re-erection of the existing railing shall be accomplished in a manner that will avoid scratching, denting or other damage that may affect the durability or appearance of the railing.

The length paid for will be the overall length along the rail at the location of re-erection.

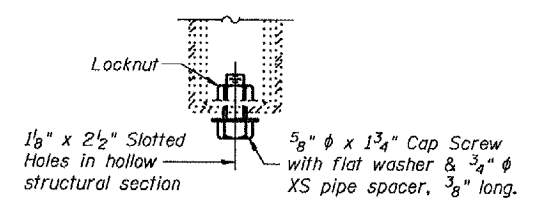
This work will be paid for at the contract unit price per foot for Removing and Re-erecting Existing Railing, which price shall include removal, temporary storage, re-erection, asphalt paint or new bearing pads, shims and all new hardware required to satisfactorily complete the work.



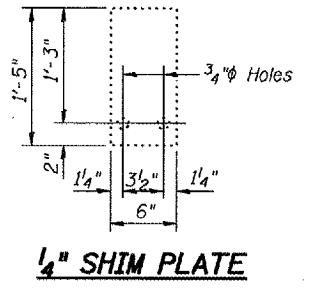
PLAN-BOTT. SPLICE P TYPICAL



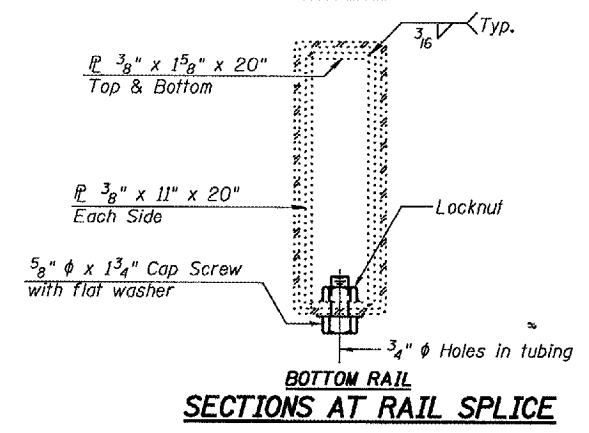
SECTION B-B



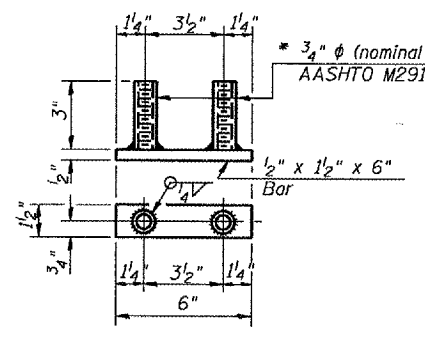
RAIL SPLICE CONNECTION AT EXPANSION JT.



1/4" SHIM PLATE



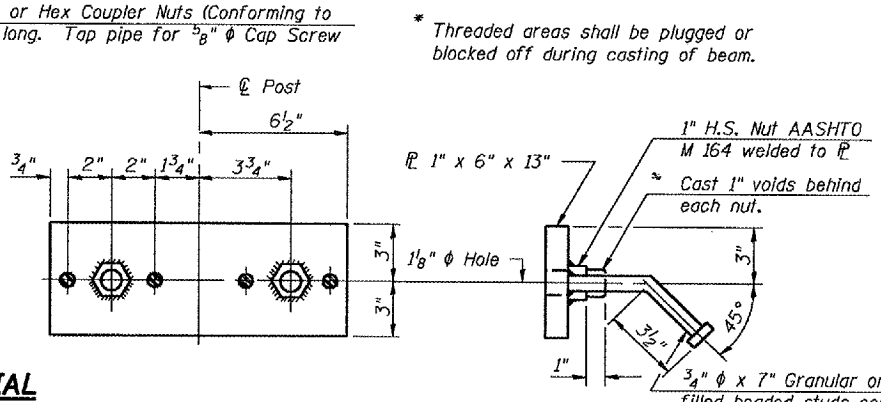
SECTIONS AT RAIL SPLICE



BOTTOM ANCHOR DEVICE

BILL OF MATERIAL

Item	Unit	Quantity
Removing and Re-erecting Existing Railing	Foot	110.5



TOP ANCHOR DEVICE

* Threaded areas shall be plugged or blocked off during casting of beam.

RAIL DETAILS
F.A.S. RT. 384
PEORIA COUNTY
SN 072-0137

DESIGNED	V.H.V.
CHECKED	S.J.B.
DRAWN	Drew Christopher
CHECKED	V.H.V. S.J.B.

June 21, 2007
EXAMINED *Carl Perry*
REPAIR PLANS UNIT CHIEF
PASSED *Ralph E. Anderson*
ENGINEER OF BRIDGES AND STRUCTURES