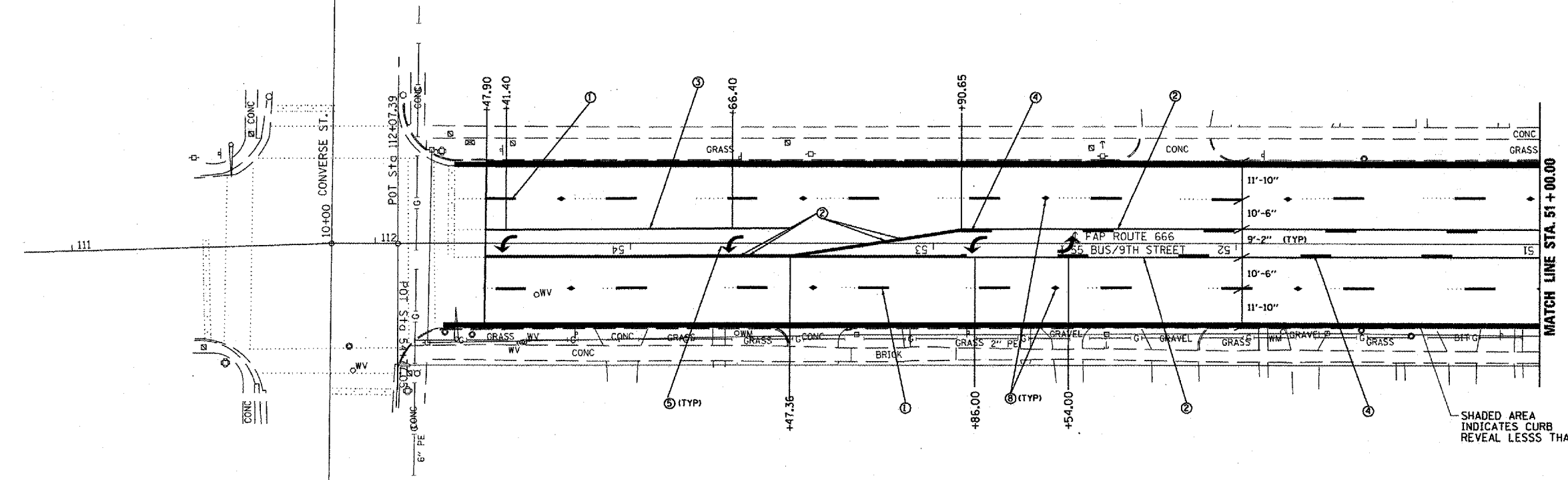
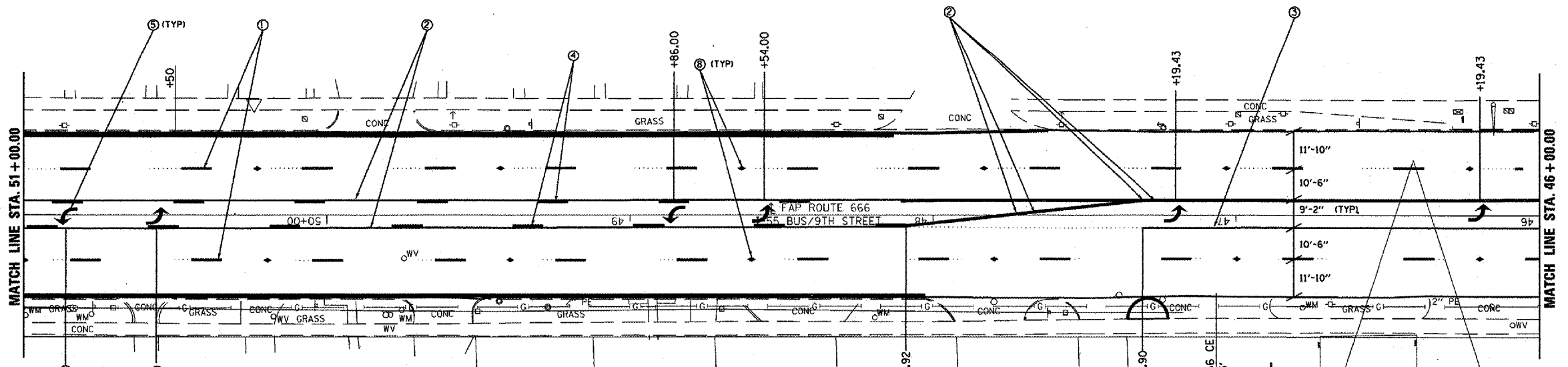


FAP RTE.	SECTION	COUNTY	TOTAL SHEETS	SHEET NO.
666	SP-Z, RS-4	SANGAMON	80	41
STA.		TO STA.		
FED. ROAD DIST. NO.		ILLINOIS FED. AID PROJECT		



SHADED AREA INDICATES CURB REVEAL LESS THAN 4"

- PAVEMENT MARKING LEGEND**
- ① PR PPPM TY B (SKIP-DASH), WHITE, 5"
 - ② PR THERMOPLASTIC PM (SOLID), YELLOW, 5"
 - ③ PR PPPM TY B (SOLID), WHITE, 6"
 - ④ PR THERMOPLASTIC PM (SKIP-DASH), YELLOW, 5"
 - ⑤ PR PPPM TY B, LETTERS & SYMBOLS
 - ⑥ PR PPPM TY B (SOLID), WHITE, 24"
 - ⑦ PR THERMOPLASTIC PM (SOLID), YELLOW, 12"
 - ⑧ PR RAISED REFLECTIVE PAVEMENT MARKER
 - ⑨ PR POLYUREA PM TY I (SKIP-DASH), WHITE, 5"
 - ⑩ PR POLYUREA PM TY I (SOLID), YELLOW, 5"
 - ⑪ PR POLYUREA PM TY I (SKIP-DASH), YELLOW, 5"
 - ⑫ PR POLYUREA PM TY I (SOLID), WHITE, 6"
 - ⑬ PR POLYUREA PM TY I (SOLID), YELLOW, 12"



REVISIONS	
NAME	DATE

ILLINOIS DEPARTMENT OF TRANSPORTATION
PAVEMENT MARKING SHEET
FAP ROUTE 666 (I-55 BUS/9TH STREET)
SECTION SP-Z, RS-4
SANGAMON COUNTY
SHEET 1 OF 12

SCALE: VERT. _____
 HORIZ. _____
 DATE _____

DRAWN BY _____
 CHECKED BY _____