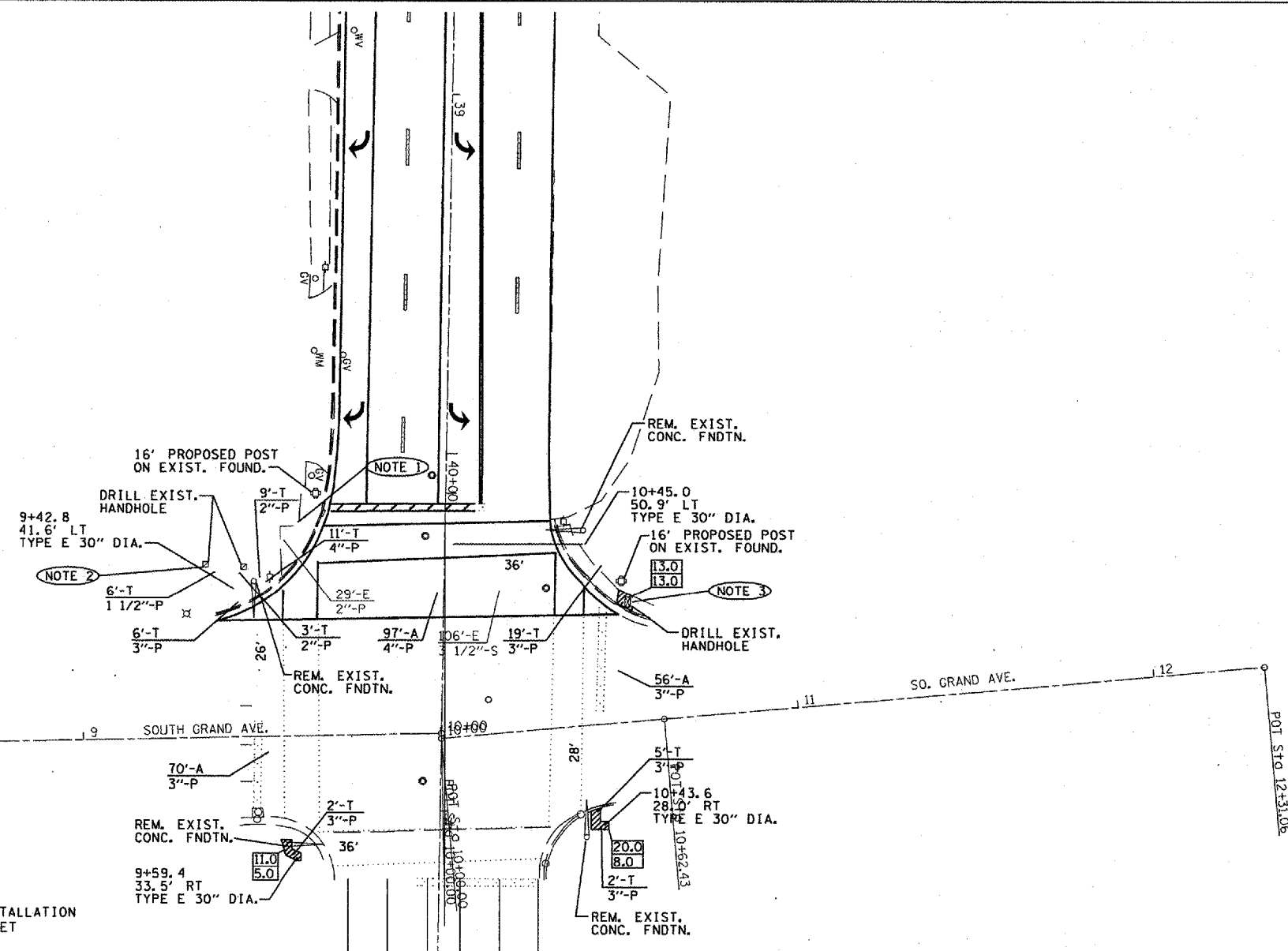


F.A.P. RTE.	SECTION	COUNTY	TOTAL SHEETS	SHEET NO.
666	SP-Z, RS-4	SANGAMON	80	74
STA.		TO STA.		
FED. ROAD DIST. NO.		ILLINOIS		FED. AID PROJECT



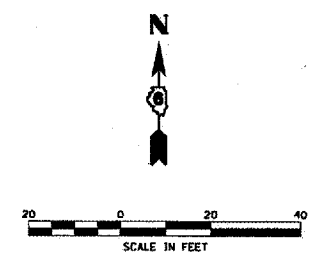
TRAFFIC SIGNAL QUANTITIES

LOCATION: NINTH AND SOUTH GRAND

QUANTITY	UNIT	ITEM
26.0	SQ FT	PORTLAND CEMENT CONCRETE SIDEWALK, 4"
44.0	SO FT	SIDEWALK REMOVAL
17.18.0	SO FT	SO. GRAND AVE.
36.0	SO FT	SOUTH GRAND AVE.
6.0	FOOT	SIGN PANEL, TYPE I
12.0	FOOT	SIGN PANEL, TYPE II
34.0	FOOT	CONDUIT IN TRENCH, 1 1/2" DIA., PVC
11.0	FOOT	CONDUIT IN TRENCH, 2" DIA., PVC
126.0	FOOT	CONDUIT IN TRENCH, 3" DIA., PVC
97.0	FOOT	CONDUIT IN TRENCH, 4" DIA., PVC
2	EACH	CONDUIT, AUGERED, 3" DIA., PVC
1	EACH	CONDUIT, AUGERED, 4" DIA., PVC
63.0	FOOT	HANDHOLE
1	EACH	DOUBLE HANDHOLE
1	EACH	TRENCH AND BACKFILL FOR ELECTRICAL WORK
1	EACH	MAINTENANCE OF EXISTING TRAFFIC SIGNAL INSTALLATION
1	EACH	FULL-ACTUATED CONTROLLER AND TYPE IV CABINET
1	EACH	TRANSCEIVER - FIBER OPTIC
487.0	FOOT	ELECTRIC CABLE IN CONDUIT, SIGNAL, NO. 14, 3/C
751.5	FOOT	ELECTRIC CABLE IN CONDUIT, SIGNAL, NO. 14, 5/C
618.0	FOOT	ELECTRIC CABLE IN CONDUIT, SIGNAL, NO. 14, 7/C
148.5	FOOT	ELECTRIC CABLE IN CONDUIT, SIGNAL, NO. 14, 9/C
254.0	FOOT	ELECTRIC CABLE IN CONDUIT, SIGNAL, NO. 14, 12/C
686.0	FOOT	ELECTRIC CABLE IN CONDUIT, LEAD-IN, NO. 18, 6 PAIR
32.0	FOOT	ELECTRIC CABLE IN CONDUIT, SERVICE, NO. 6, 3/C
2	EACH	TRAFFIC SIGNAL POST, ALUMINUM, 16 FT.
1	EACH	STEEL MAST ARM ASSEMBLY AND POLE, 26 FT.
1	EACH	STEEL MAST ARM ASSEMBLY AND POLE, 28 FT.
2	EACH	STEEL MAST ARM ASSEMBLY AND POLE, 36 FT.
3.0	FOOT	CONCRETE FOUNDATION, TYPE D
47.0	FOOT	CONCRETE FOUNDATION, TYPE E, 30" DIA.
3	EACH	DRILL EXISTING HANDHOLE
8	EACH	SIGNAL HEAD, POLYCARBONATE, LED, 1-FACE, 3-SECTION, MAST ARM MOUNTED
3	EACH	SIGNAL HEAD, POLYCARBONATE, LED, 1-FACE, 5-SECTION, MAST ARM MOUNTED
1	EACH	SIGNAL HEAD, POLYCARBONATE, LED, 1-FACE, 3-SECTION, BRACKET MOUNTED
3	EACH	SIGNAL HEAD, POLYCARBONATE, LED, 2-FACE, 1-3 SECTION, 1-5 SECTION, BRACKET MOUNTED
1	EACH	SIGNAL HEAD, POLYCARBONATE, LED, 2-FACE, 5-SECTION, BRACKET MOUNTED
1	EACH	SIGNAL HEAD, POLYCARBONATE, LED, 3-FACE, 2-3 SECTION, 1-5 SECTION, BRACKET MOUNTED
4	EACH	PEDESTRIAN SIGNAL HEAD, POLYCARBONATE, LED, 2-FACE, BRACKET MOUNTED
16	EACH	TRAFFIC SIGNAL BACKPLATE
8	EACH	PEDESTRIAN PUSH-BUTTON
29.0	FOOT	REMOVE ELECTRIC CABLE FROM CONDUIT
141.0	FOOT	REMOVE AND REINSTALL CABLE FROM CONDUIT
1	EACH	REMOVE EXISTING TRAFFIC SIGNAL EQUIPMENT
4	EACH	REMOVE EXISTING CONCRETE FOUNDATION
1	EACH	VIDEO VEHICLE DETECTION SYSTEM
4	EACH	CAMERA MOUNTING ASSEMBLY

TRAFFIC SIGNAL NOTES:

1. REMOVE SIGNAL CABLES IN EXISTING CONDUIT. INSTALL PROPOSED WIRING IN EXISTING CONDUIT
 2. REMOVE EXISTING F/O FROM EXISTING CABINET TO EXISTING HANDHOLE. REINSTALL TO PROPOSED CABINET.
 3. REMOVE EXISTING F/O FROM EXISTING CABINET TO EXISTING HANDHOLE. REINSTALL TO PROPOSED CABINET.
 4. THE CAMERA MOUNTING ASSEMBLIES SHALL BE OF THE CORRECT TYPE TO ATTACH TO THE HORIZONTAL ARMS OF THE PROPOSED MAST ARM ASSEMBLIES
- ALL TRAFFIC SIGNAL MAST ARM ASSEMBLIES MUST BE DESIGNED FOR THE LOADINGS SHOWN ON THE HIGHWAY STANDARDS OR THESE SIGNAL PLANS WHICHEVER IS GREATER



REVISIONS	
NAME	DATE

ILLINOIS DEPARTMENT OF TRANSPORTATION

TRAFFIC SIGNAL PLAN

FAP ROUTE 666 (I-55 BUS/9TH STREET)
NINTH STREET AT SOUTH GRAND AVE

SCALE: VERT. _____
HORIZ. _____

DATE _____

DRAWN BY _____
CHECKED BY _____

PLOT DATE = 11/01/00
FILE NAME = 071100
PLOT SCALE = 1/8"=1'-0"
USER NAME = JUSHER