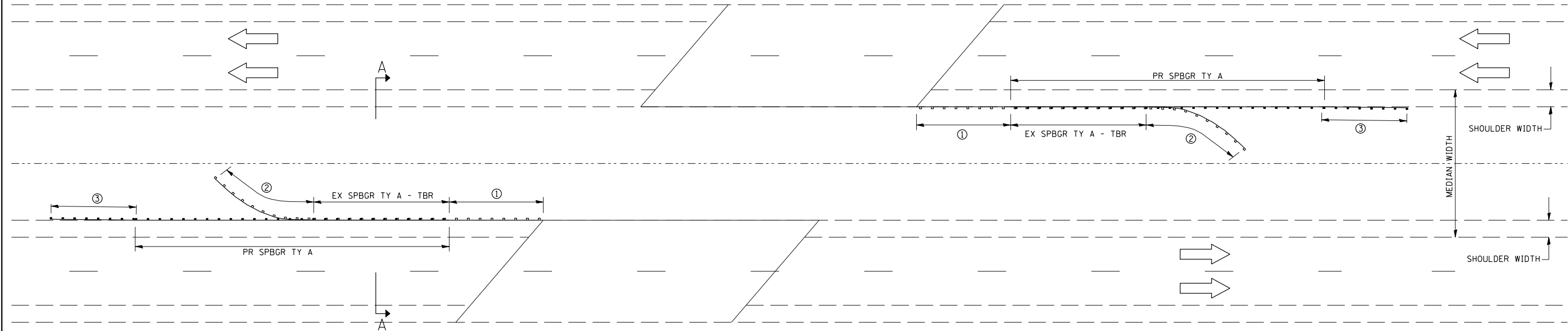


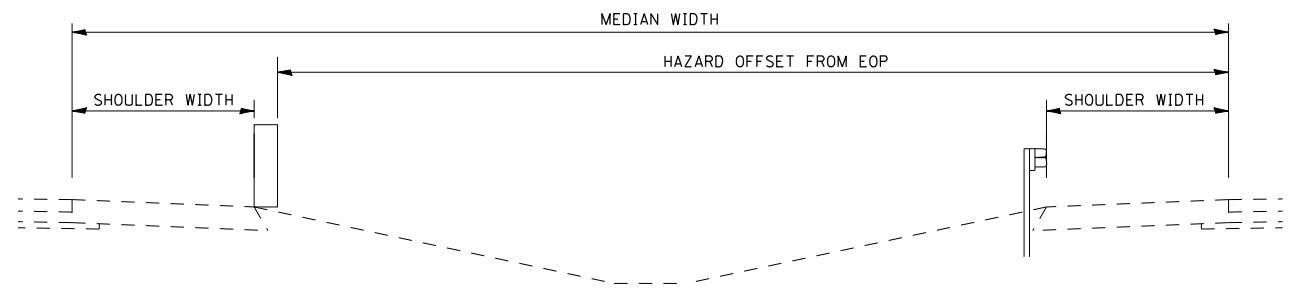
F.A.I. RTE.	SECTION	COUNTY	TOTAL SHEETS	SHEET NO.
72	*	**	12	11
STA.		TO STA.		
FED. ROAD DIST. NO.	ILLINOIS	FED. AID PROJECT		

\* - D-6 MEDIAN PROTECTION 2007-1  
 \*\* - ADAMS, MORGAN, PIKE, SANGAMON AND SCOTT COUNTIES



**DETAIL "C"**  
 (PROPOSED PROTECTION OF AT GRADE HAZARD WITH PROPOSED GUARDRAIL IMPROVEMENT)

- ① EX TRAFFIC BARRIER TERMINAL, TYPE 6  
PR TRAFFIC BARRIER TERMINAL, TYPE 6, SPECIAL
- ② EX TRAFFIC BARRIER TERMINAL, TYPE 4 - TO BE REMOVED
- ③ PR TRAFFIC BARRIER TERMINAL, TYPE 1 - TANGENT



**SECTION A-A**  
 (TYPICAL CROSS SECTION)

REVISIONS	
NAME	DATE

ILLINOIS DEPARTMENT OF TRANSPORTATION  
 DETAIL "C"  
 FAI 72  
 SECTION D-6 MEDIAN PROTECTION 2007-1  
 ADAMS, MORGAN, PIKE, SANGAMON  
 AND SCOTT COUNTIES

PLOT DATE = 5/10/2007  
 FILE NAME = c:\p\projects\d653007\shdetalls.dgn  
 PLOT SCALE = 1/8" = 1' / IN.  
 USER NAME = laughlin