

| F.A.I. RTE. | SECTION | COUNTY | TOTAL SHEETS | SHEET NO. |
|-------------|---------|--------|--------------|-----------|
| 72 | - | ** | 12 | 1 |

- D-6 MEDIAN PROTECTION 2007-1
 ** - ADAMS, MORGAN, PIKE, SANGAMON AND SCOTT COUNTIES

+1
13

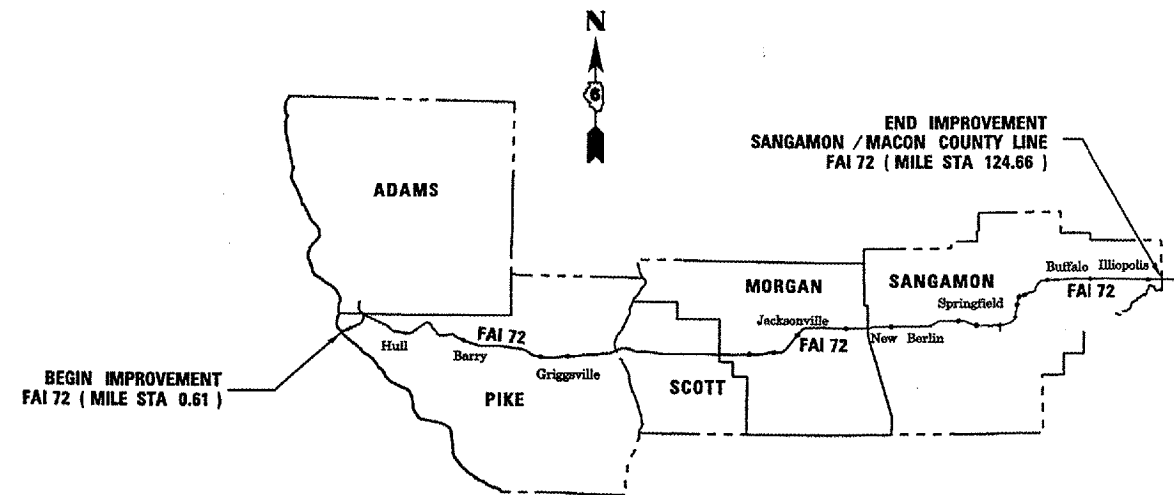
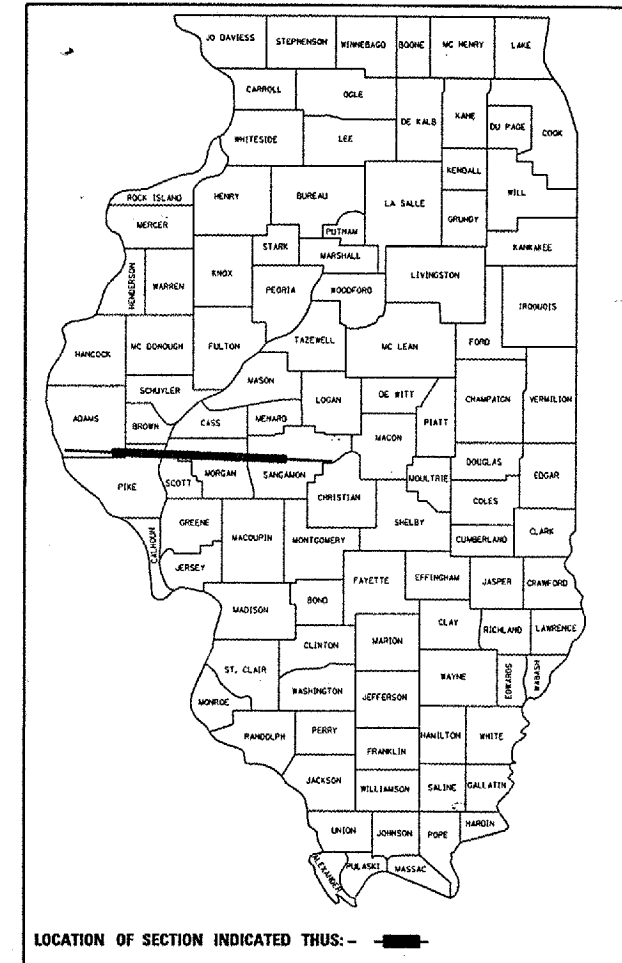
STATE OF ILLINOIS
 DEPARTMENT OF TRANSPORTATION
 DIVISION OF HIGHWAYS
**PROPOSED
 HIGHWAY PLANS**

F.A.I. ROUTE 72
 SECTION D-6 MEDIAN PROTECTION 2007-1
 PROJECT: *HSIP-072-1(072) 001*
VARIOUS COUNTY

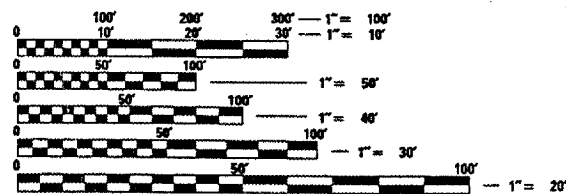
COUNTIES
 C-96-551-07

FOR LIST OF STANDARDS, SEE SHEET NO. 2
 AND INDEX OF SHEETS

D-96-530-07



NET PROJECT LENGTH = 124.05 MILES



FULL SIZE PLANS HAVE BEEN PREPARED USING STANDARD ENGINEERING SCALES. REDUCED SIZED PLANS WILL NOT CONFORM TO STANDARD SCALES. IN MAKING MEASUREMENTS ON REDUCED PLANS, THE ABOVE SCALES MAY BE USED.

J.U.L.I.E.
 JOINT UTILITY LOCATION INFORMATION FOR EXCAVATION
 1-800-892-0123

CONTRACT NO. 72B03

STATE OF ILLINOIS
 DEPARTMENT OF TRANSPORTATION
 DIVISION OF HIGHWAYS

SUBMITTED *May 10, 2007*
Deputy Director
 DEPUTY DIRECTOR OF HIGHWAYS, REGION ENGINEER

June 29, 2007
Eric S. Haral
 ENGINEER OF DESIGN AND ENVIRONMENT

June 29, 2007
Milton R. Sees, P.E.
 DIRECTOR OF HIGHWAYS, CHIEF ENGINEER

PRINTED BY THE AUTHORITY
 OF THE STATE OF ILLINOIS

Rev.

| F.A.I. RTE. | SECTION | COUNTY | TOTAL SHEETS | SHEET NO. |
|---------------------|---------|---------------------------|--------------|-----------|
| 72 | * | ** | 12 | 2 |
| STA. | | TO STA. | | |
| FED. ROAD DIST. NO. | | ILLINOIS FED. AID PROJECT | | |

- * - D-6 MEDIAN PROTECTION 2007-1
- ** - ADAMS, MORGAN, PIKE, SANGAMON AND SCOTT COUNTIES

INDEX OF SHEETS:

1. COVER SHEET
2. GENERAL NOTES
3. SUMMARY OF QUANTITIES
- 4-7. SCHEDULES
8. PLAN SHEETS
- 9-12. DETAILS
- 12A. TRAFFIC BARRIER TERMINAL, TYPE 1**

LIST OF STANDARDS:

- | | |
|-----------|-----------|
| 630001-07 | 635011-01 |
| 630301-04 | 701101-01 |
| 631011-03 | 701106-01 |
| 631031-06 | 701400-02 |
| 635006-02 | 701406-04 |
| | 702001-06 |

GENERAL NOTES:

1. ANY REFERENCE TO THE STANDARDS THROUGHOUT THE PLANS SHALL BE INTERPRETED TO BE THE LATEST STANDARDS OF THE DEPARTMENT AS INCLUDED IN THE PLANS.
2. NO EXCAVATION IS ANTICIPATED ON THIS PROJECT WHICH WOULD AFFECT UTILITIES. SHOULD NOTIFICATION BE NECESSARY, THE CONTRACTOR IS RESPONSIBLE FOR CONTACTING J.U.L.I.E. A MINIMUM OF 48 HOURS PRIOR TO COMMENCING WORK - (800) 892-0123.
3. THE CONTRACTOR WILL BE REQUIRED TO CONTACT THE OPERATIONS ENGINEER (217) 782-7314 AT LEAST 72 HOURS PRIOR TO DRIVING ANY POSTS. TO MAKE SURE THAT STATE OWNED UTILITIES ARE NOT CONFLICTING.
4. THE CONTRACTOR WILL BE REQUIRED TO REPAIR ANY AREAS OF TURF THAT ARE DAMAGED DURING THE EXECUTION OF THIS CONTRACT. THIS WORK WILL NOT BE MEASURED FOR PAYMENT AND WILL BE CONSIDERED INCIDENTAL TO THE CONTRACT.
5. ALL GUARDRAIL SHALL HAVE A PRELIMINARY LAYOUT. GUARDRAIL POSTS SHALL BE ADJUSTED SO AS TO MISS ANY SHOULDER DRAINS, INLETS, PIPE CULVERTS, STORM SEWER OR ANY OTHER HAZARD THAT MAY INTERFERE WITH GUARDRAIL CONSTRUCTION.

Route _____
 Section _____
 County _____

| |
|--|
| EXAMINED <u>May 8</u> 20 <u>07</u> <i>WRJ</i> |
| PROGRAM IMPLEMENTATION ENGINEER |
| EXAMINED <u>May 8</u> 20 <u>07</u> <i>WRJ</i> |
| PROGRAM DEVELOPMENT ENGINEER |

| |
|---|
| DISTRICT SIX |
| EXAMINED <u>May 9</u> 20 <u>07</u> <i>Ron J. Hoans</i> |
| OPERATIONS ENGINEER |

| REVISIONS | |
|-----------|------|
| NAME | DATE |
| | |
| | |
| | |
| | |
| | |
| | |
| | |
| | |
| | |
| | |

ILLINOIS DEPARTMENT OF TRANSPORTATION
 GENERAL NOTES
 FAI 72
 SECTION D-6 MEDIAN PROTECTION 2007-1
 ADAMS, MORGAN, PIKE, SANGAMON
 AND SCOTT COUNTIES

Rev.

| | | | | |
|----------------|---------|--------|-----------------|--------------|
| F.A.I. RYE. | SECTION | COUNTY | TOTAL SHEETS | SHEET NO. |
| 72 | * | ** | 12 | 3 |

| | | |
|---------------------|----------|------------------|
| STA. | | TO STA. |
| FED. ROAD DIST. NO. | ILLINOIS | FED. AID PROJECT |

* - D-6 MEDIAN PROTECTION 2007-1
 ** - ADAMS, MORGAN, PIKE, SANGAMON AND SCOTT COUNTIES

ILLINOIS DEPARTMENT OF TRANSPORTATION
 SUMMARY OF QUANTITIES

| CODE NO. | ITEM | UNIT | I-72 | | TOTAL |
|----------|--|--------|-------------------|---------|---------|
| | | | 90% FED/10% STATE | | |
| | | | SFTY-3J | SFTY-3J | |
| 63000000 | STEEL PLATE BEAM GUARD RAIL, TYPE A | FOOT | 12462.5 | 12462.5 | 12462.5 |
| 63100045 | TRAFFIC BARRIER TERMINAL, TYPE 2 | EACH | 88.0 | 88.0 | 88.0 |
| 63100167 | TRAFFIC BARRIER TERMINAL TYPE 1, SPECIAL (TANGENT) | EACH | 100.0 | 100.0 | 100.0 |
| 63100215 | TRAFFIC BARRIER TERMINAL, TYPE 6 (SPECIAL) | EACH | 8.0 | 8.0 | 8.0 |
| 63200310 | GUARDRAIL REMOVAL | FOOT | 1450.0 | 1450.0 | 1450.0 |
| 67100100 | MOBILIZATION | L SUM | 1.0 | 1.0 | 1.0 |
| 70106800 | CHANGEABLE MESSAGE SIGN | CAL MO | 8.0 | 8.0 | 8.0 |
| 70100700 | TRAFFIC CONTROL AND PROTECTION, STANDARD 701406 | L SUM | 1.0 | 1.0 | 1.0 |
| 78200400 | GUARDRAIL REFLECTORS | EACH | 400.0 | 400.0 | 400.0 |
| 78201000 | TERMINAL MARKER - DIRECT APPLIED | EACH | 100.0 | 100.0 | 100.0 |
| X6333500 | TRAFFIC BARRIER TERMINAL REMOVAL | EACH | 12.0 | 12.0 | 12.0 |
| | | | | | |
| | | | | | |
| | | | | | |
| | | | | | |
| | | | | | |
| | | | | | |
| | | | | | |
| | | | | | |
| | | | | | |
| | | | | | |
| | | | | | |
| | | | | | |
| | | | | | |
| | | | | | |
| | | | | | |
| | | | | | |
| | | | | | |
| | | | | | |
| | | | | | |

| REVISIONS | |
|-----------|------|
| NAME | DATE |
| | |
| | |
| | |
| | |
| | |
| | |
| | |
| | |

ILLINOIS DEPARTMENT OF TRANSPORTATION
 SUMMARY OF QUANTITIES
 FAI 72
 SECTION D-6 MEDIAN PROTECTION 2007-1
 ADAMS, MORGAN, PIKE, SANGAMON
 AND SCOTT COUNTIES

PLT DATE = 5/18/2007
 USER = jrs05087
 USER NAME = jrs05087
 PLT SCALE = 100' AS SHOWN
 USER NAME = jrs05087

| F.A.I. RTE. | SECTION | COUNTY | TOTAL SHEETS | SHEET NO. |
|-------------|---------|--------|--------------|-----------|
| 72 | * | ** | 12 | 4 |

| | |
|---------------------|---------------------------|
| STA. | TO STA. |
| FED. ROAD DIST. NO. | ILLINOIS FED. AID PROJECT |

* - D-6 MEDIAN PROTECTION 2007-1
 ** - ADAMS, MORGAN, PIKE, SANGAMON AND SCOTT COUNTIES

SCHEDULE FOR SAFETY IMPROVEMENTS

| GENERAL LOCATION | DESCRIPTION OF HAZARD | STA OF HAZARD | EXISTING MEDIAN WIDTH | EXISTING SHOULDER WIDTH | HAZARD OFFSET FROM EDGE OF PAVEMENT | WIDTH OF HAZARD | LENGTH OF HAZARD | PROPOSED IMPROVEMENT SEE DETAIL | GUARDRAIL REMOVAL | TRAFFIC BARRIER TERMINAL REMOVAL | SPBGR TYPE A | GUARDRAIL REFLECTORS | TRAFFIC BARRIER TERMINAL TYPE 1, SPL (TANGENT) | TERMINAL MARKER - DIRECT APPLIED | TRAFFIC BARRIER TERMINAL TYPE 2 | TRAFFIC BARRIER TERMINAL TYPE 6 SPECIAL |
|-------------------|----------------------------------|---------------|-----------------------|-------------------------|-------------------------------------|-----------------|------------------|---------------------------------|-------------------|----------------------------------|--------------|----------------------|--|----------------------------------|---------------------------------|---|
| | | (MILE STA) | (FOOT) | (FOOT) | (FOOT) | (FOOT) | (FOOT) | (FOOT) | (A, B, OR C) | (FOOT) | (EACH) | (FOOT) | (EACH) | (EACH) | (EACH) | (EACH) |
| I-72 PIKE COUNTY | | | | | | | | | | | | | | | | |
| (6S075I072R002.9) | SIMPLE SPAN SIGN TRUSS (EB MED.) | 2.9 | 54.0 | 6.0 | 11.5 | 2.5 | 12.0 | A | -- | -- | 112.5 | 4.0 | 1 | 1 | 1 | -- |
| (6S075I072R003.7) | SIMPLE SPAN SIGN TRUSS (EB MED.) | 3.7 | 115.0 | 6.0 | 40.0 | 2.5 | 14.6 | A | -- | -- | 62.5 | 4.0 | 1 | 1 | 1 | -- |
| (6S075I072L005.3) | SIMPLE SPAN SIGN TRUSS (WB OUT.) | -- | -- | -- | 36.1 | -- | -- | A | -- | -- | 62.5 | 4.0 | 1 | 1 | 1 | -- |
| (6S075I072L005.3) | SIMPLE SPAN SIGN TRUSS (WB MED.) | 5.3 | 53.3 | 6.0 | 12.0 | 2.5 | 12.0 | A | -- | -- | 112.5 | 4.0 | 1 | 1 | 1 | -- |
| I-72 PIKE COUNT | | | | | | | | | 0.0 | 0.0 | 350.0 | 16.0 | 4.0 | 4.0 | 4.0 | 0.0 |

SCHEDULE FOR SAFETY IMPROVEMENTS

| GENERAL LOCATION | DESCRIPTION OF HAZARD | STA OF HAZARD | EXISTING MEDIAN WIDTH | EXISTING SHOULDER WIDTH | HAZARD OFFSET FROM EDGE OF PAVEMENT | WIDTH OF HAZARD | LENGTH OF HAZARD | PROPOSED IMPROVEMENT SEE DETAIL | GUARDRAIL REMOVAL | TRAFFIC BARRIER TERMINAL REMOVAL | SPBGR TYPE A | GUARDRAIL REFLECTORS | TRAFFIC BARRIER TERMINAL TYPE 1, SPL (TANGENT) | TERMINAL MARKER - DIRECT APPLIED | TRAFFIC BARRIER TERMINAL TYPE 2 | TRAFFIC BARRIER TERMINAL TYPE 6 SPECIAL |
|-------------------------------|-------------------------|---------------|-----------------------|-------------------------|-------------------------------------|-----------------|------------------|---------------------------------|-------------------|----------------------------------|--------------|----------------------|--|----------------------------------|---------------------------------|---|
| | | (MILE STA) | (FOOT) | (FOOT) | (FOOT) | (FOOT) | (FOOT) | (FOOT) | (A, B, OR C) | (FOOT) | (EACH) | (FOOT) | (EACH) | (EACH) | (EACH) | (EACH) |
| I-72 SCOTT COUNTY | | | | | | | | | | | | | | | | |
| SN 086-0030 | MEDIAN BRIDGE PIER (EB) | 47.2 | 108.0 | 6.0 | 52.5 | 3.0 | 22.0 | A | -- | -- | 50.0 | 4.0 | 1 | 1 | 1 | -- |
| SN 086-0030 | MEDIAN BRIDGE PIER (WB) | 47.2 | 108.0 | 6.0 | 52.5 | 3.0 | 22.0 | A | -- | -- | 50.0 | 4.0 | 1 | 1 | 1 | -- |
| SN 086-0029 | MEDIAN BRIDGE PIER (EB) | 49.5 | 86.5 | 6.0 | 42.0 | 2.5 | 24.2 | A | -- | -- | 62.5 | 4.0 | 1 | 1 | 1 | -- |
| SN 086-0029 | MEDIAN BRIDGE PIER (WB) | 49.5 | 86.5 | 6.0 | 42.0 | 2.5 | 24.2 | A | -- | -- | 62.5 | 4.0 | 1 | 1 | 1 | -- |
| SN 086-0027 | MEDIAN BRIDGE PIER (EB) | 52.0 | 88.9 | 6.0 | 44.0 | 2.9 | 63.0 | A | -- | -- | 100.0 | 4.0 | 1 | 1 | 1 | -- |
| SN 086-0027 | MEDIAN BRIDGE PIER (WB) | 52.0 | 88.9 | 6.0 | 44.0 | 2.9 | 63.0 | A | -- | -- | 100.0 | 4.0 | 1 | 1 | 1 | -- |
| SN 086-0026 | MEDIAN BRIDGE PIER (EB) | 54.3 | 87.5 | 6.0 | 42.5 | 2.5 | 24.0 | A | -- | -- | 62.5 | 4.0 | 1 | 1 | 1 | -- |
| SN 086-0026 | MEDIAN BRIDGE PIER (WB) | 54.3 | 87.5 | 6.0 | 42.5 | 2.5 | 24.0 | A | -- | -- | 62.5 | 4.0 | 1 | 1 | 1 | -- |
| I-72 SCOTT COUNTY SUB-TOTAL = | | | | | | | | | 0.0 | 0.0 | 550.0 | 32.0 | 8.0 | 8.0 | 8.0 | 0.0 |

PLOT DATE = 5/10/2007
 FILE NAME = c:\p\projects\d653007\shsch.dgn
 PLOT SCALE = 1/8"=1'-0" / IN.
 USER NAME = laughlin-1

| NAME | DATE |
|------|------|
| | |
| | |
| | |
| | |
| | |
| | |
| | |
| | |
| | |
| | |

ILLINOIS DEPARTMENT OF TRANSPORTATION
 SCHEDULE OF QUANTITIES
 FAI 72
 SECTION D-6 MEDIAN PROTECTION 2007-1
 ADAMS, MORGAN, PIKE, SANGAMON
 AND SCOTT COUNTIES

| F.A.I. RTE. | SECTION | COUNTY | TOTAL SHEETS | SHEET NO. |
|-------------|---------|--------|--------------|-----------|
| 72 | * | ** | 12 | 5 |

| | |
|---------------------|---------------------------|
| STA. | TO STA. |
| FED. ROAD DIST. NO. | ILLINOIS FED. AID PROJECT |

* - D-6 MEDIAN PROTECTION 2007-1
 ** - ADAMS, MORGAN, PIKE, SANGAMON AND SCOTT COUNTIES

SCHEDULE FOR SAFETY IMPROVEMENTS

| GENERAL LOCATION | DESCRIPTION OF HAZARD | STA OF HAZARD | EXISTING MEDIAN WIDTH | EXISTING SHOULDER WIDTH | HAZARD OFFSET FROM EDGE OF PAVEMENT | WIDTH OF HAZARD | LENGTH OF HAZARD | PROPOSED IMPROVEMENT SEE DETAIL | GUARDRAIL REMOVAL | TRAFFIC BARRIER TERMINAL REMOVAL | SPBGR TYPE A | GUARDRAIL REFLECTORS | TRAFFIC BARRIER TERMINAL TYPE 1, SPL (TANGENT) | TERMINAL MARKER - DIRECT APPLIED | TRAFFIC BARRIER TERMINAL TYPE 2 | TRAFFIC BARRIER TERMINAL TYPE 6 SPECIAL |
|--------------------------------|---------------------------------|---------------|-----------------------|-------------------------|-------------------------------------|-----------------|------------------|---------------------------------|-------------------|----------------------------------|--------------|----------------------|--|----------------------------------|---------------------------------|---|
| | | (MILE STA) | (FOOT) | (FOOT) | (FOOT) | (FOOT) | (FOOT) | (FOOT) | (A, B, OR C) | (FOOT) | (EACH) | (FOOT) | (EACH) | (EACH) | (EACH) | (EACH) |
| I-72 MORGAN COUNTY | | | | | | | | | | | | | | | | |
| SN 069-0053 | MEDIAN BRIDGE PIER (EB) | 57.9 | 88.1 | 6.0 | 43.2 | 2.5 | 26.0 | B | -- | -- | 200.0 | 4.0 | 1 | 1 | 1 | -- |
| SN 069-0053 | MEDIAN BRIDGE PIER (WB) | 57.9 | 88.1 | 6.0 | 42.4 | 2.5 | 26.0 | B | -- | -- | 200.0 | 4.0 | 1 | 1 | 1 | -- |
| SN 069-0054 | MEDIAN BRIDGE PIER (EB) | 59.0 | 88.5 | 6.0 | 43.0 | 2.5 | 28.0 | B | -- | -- | 200.0 | 4.0 | 1 | 1 | 1 | -- |
| SN 069-0054 | MEDIAN BRIDGE PIER (WB) | 59.0 | 88.5 | 6.0 | 43.0 | 2.5 | 28.0 | B | -- | -- | 200.0 | 4.0 | 1 | 1 | 1 | -- |
| (6S0691072R059.7) | SIMPLE SPAN SIGN STRUCTURE (WB) | 60.3 | 87.2 | 6.0 | 48.4 | 2.3 | 10.8 | A | -- | -- | 37.5 | 4.0 | 1 | 1 | 1 | -- |
| (6S0691072R059.7) | SIMPLE SPAN SIGN STRUCTURE (EB) | 60.3 | 87.2 | 6.0 | 36.5 | 2.3 | 10.8 | A | -- | -- | 62.5 | 4.0 | 1 | 1 | 1 | -- |
| (6S0691072L060.9) | SIMPLE SPAN SIGN STRUCTURE (WB) | 60.9 | 87.5 | 6.0 | 37.0 | 2.5 | 11.0 | A | -- | -- | 62.5 | 4.0 | 1 | 1 | 1 | -- |
| (6S0691072L060.9) | SIMPLE SPAN SIGN STRUCTURE (EB) | 60.9 | 87.5 | 6.0 | 48.0 | 2.5 | 11.0 | A | -- | -- | 37.5 | 4.0 | 1 | 1 | 1 | -- |
| SN 069-0034 | MEDIAN BRIDGE PIER (EB) | 64.2 | 87.1 | 6.0 | 42.2 | 2.9 | 62.0 | A | -- | -- | 100.0 | 4.0 | 1 | 1 | 1 | -- |
| SN 069-0034 | MEDIAN BRIDGE PIER (WB) | 64.2 | 87.1 | 6.0 | 42.0 | 2.9 | 62.0 | A | -- | -- | 100.0 | 4.0 | 1 | 1 | 1 | -- |
| SN 069-0037 | MEDIAN BRIDGE PIER (EB) | 66.8 | 86.9 | 6.0 | 41.4 | 2.5 | 24.0 | A | -- | -- | 62.5 | 4.0 | 1 | 1 | 1 | -- |
| SN 069-0037 | MEDIAN BRIDGE PIER (WB) | 66.8 | 86.9 | 6.0 | 43.0 | 2.5 | 24.0 | A | -- | -- | 62.5 | 4.0 | 1 | 1 | 1 | -- |
| SN 069-0044 | MEDIAN BRIDGE PIER (EB) | 68.6 | 88.1 | 6.0 | 42.1 | 3.4 | 109.5 | A | -- | -- | 150.0 | 4.0 | 1 | 1 | 1 | -- |
| SN 069-0044 | MEDIAN BRIDGE PIER (WB) | 68.6 | 88.1 | 6.0 | 42.6 | 3.4 | 109.5 | B | -- | -- | 287.5 | 4.0 | 1 | 1 | 1 | -- |
| SN 069-0045 | MEDIAN BRIDGE PIER (EB) | 69.1 | 88.2 | 6.0 | 40.7 | 6.5 | 28.0 | B | -- | -- | 225.0 | 4.0 | 1 | 1 | 1 | -- |
| SN 069-0045 | MEDIAN BRIDGE PIER (WB) | 69.1 | 88.2 | 6.0 | 41.0 | 6.5 | 28.0 | B | -- | -- | 225.0 | 4.0 | 1 | 1 | 1 | -- |
| SN 069-0047 | MEDIAN BRIDGE PIER (EB) | 69.7 | 87.8 | 6.0 | 43.1 | 2.5 | 25.0 | A | -- | -- | 62.5 | 4.0 | 1 | 1 | 1 | -- |
| SN 069-0047 | MEDIAN BRIDGE PIER (WB) | 69.7 | 87.8 | 6.0 | 42.2 | 2.5 | 25.0 | A | -- | -- | 62.5 | 4.0 | 1 | 1 | 1 | -- |
| SN 069-0050 | MEDIAN BRIDGE PIER (EB) | 71.3 | 86.7 | 6.0 | 42.1 | 2.5 | 25.0 | B | -- | -- | 200.0 | 4.0 | 1 | 1 | 1 | -- |
| SN 069-0050 | MEDIAN BRIDGE PIER (WB) | 71.3 | 86.7 | 6.0 | 42.1 | 2.5 | 25.0 | A | -- | -- | 62.5 | 4.0 | 1 | 1 | 1 | -- |
| SN 069-0051 | MEDIAN BRIDGE PIER (EB) | 73.8 | 87.6 | 6.0 | 42.7 | 2.5 | 25.0 | A | -- | -- | 62.5 | 4.0 | 1 | 1 | 1 | -- |
| SN 069-0051 | MEDIAN BRIDGE PIER (WB) | 73.8 | 87.6 | 6.0 | 42.4 | 2.5 | 25.0 | A | -- | -- | 62.5 | 4.0 | 1 | 1 | 1 | -- |
| SN 069-0052 | MEDIAN BRIDGE PIER (EB) | 75.8 | 87.5 | 6.0 | 42.0 | 2.9 | 61.0 | A | -- | -- | 100.0 | 4.0 | 1 | 1 | 1 | -- |
| SN 069-0052 | MEDIAN BRIDGE PIER (WB) | 75.8 | 87.5 | 6.0 | 42.6 | 2.9 | 61.0 | A | -- | -- | 100.0 | 4.0 | 1 | 1 | 1 | -- |
| I-72 MORGAN COUNTY SUB-TOTAL = | | | | | | | | | 0.0 | 0.0 | 2925.0 | 96.0 | 24.0 | 24.0 | 24.0 | 0.0 |

PLOT DATE = 5/10/2007
 FILE NAME = c:\p\projects\d653007\shsch.dgn
 PLOT SCALE = 1/8"=1'-0" / IN.
 USER NAME = laughlin-1

| NAME | DATE |
|------|------|
| | |
| | |
| | |
| | |
| | |
| | |
| | |
| | |
| | |
| | |

ILLINOIS DEPARTMENT OF TRANSPORTATION
 SCHEDULE OF QUANTITIES
 FAI 72
 SECTION D-6 MEDIAN PROTECTION 2007-1
 ADAMS, MORGAN, PIKE, SANGAMON
 AND SCOTT COUNTIES

| | | | | |
|-------------|---------|--------|--------------|-----------|
| F.A.I. RTE. | SECTION | COUNTY | TOTAL SHEETS | SHEET NO. |
| 72 | * | ** | 12 | 6 |

| | |
|---------------------|---------------------------|
| STA. | TO STA. |
| FED. ROAD DIST. NO. | ILLINOIS FED. AID PROJECT |

* - D-6 MEDIAN PROTECTION 2007-1
 ** - ADAMS, MORGAN, PIKE, SANGAMON AND SCOTT COUNTIES

SCHEDULE FOR SAFETY IMPROVEMENTS

| GENERAL LOCATION | DESCRIPTION OF HAZARD | STA OF HAZARD | EXISTING MEDIAN WIDTH | EXISTING SHOULDER WIDTH | HAZARD OFFSET FROM EDGE OF PAVEMENT | WIDTH OF HAZARD | LENGTH OF HAZARD | PROPOSED IMPROVEMENT SEE DETAIL | GUARDRAIL REMOVAL | TRAFFIC BARRIER TERMINAL REMOVAL | SPBGR TYPE A | GUARDRAIL REFLECTORS | TRAFFIC BARRIER TERMINAL TYPE 1, SPL (TANGENT) | TERMINAL MARKER - DIRECT APPLIED | TRAFFIC BARRIER TERMINAL TYPE 2 | TRAFFIC BARRIER TERMINAL TYPE 6 SPECIAL |
|---------------------------|---------------------------------|---------------|-----------------------|-------------------------|-------------------------------------|-----------------|------------------|---------------------------------|-------------------|----------------------------------|--------------|----------------------|--|----------------------------------|---------------------------------|---|
| | | (MILE STA) | (FOOT) | (FOOT) | (FOOT) | (FOOT) | (FOOT) | (FOOT) | (A, B, OR C) | (FOOT) | (EACH) | (FOOT) | (EACH) | (EACH) | (EACH) | (EACH) |
| I-72 SANGAMON COUNTY | | | | | | | | | | | | | | | | |
| SN 084-0140 | MEDIAN BRIDGE PIER (EB) | 78.8 | 88.2 | 6.0 | 42.2 | 2.5 | 24.0 | A | -- | -- | 62.5 | 4.0 | 1 | 1 | 1 | -- |
| SN 084-0140 | MEDIAN BRIDGE PIER (WB) | 78.8 | 88.2 | 6.0 | 43.5 | 2.5 | 24.0 | A | -- | -- | 62.5 | 4.0 | 1 | 1 | 1 | -- |
| SN 084-0141 | MEDIAN BRIDGE PIER (EB) | 81.3 | 88.0 | 6.0 | 42.6 | 2.5 | 20.2 | A | -- | -- | 62.5 | 4.0 | 1 | 1 | 1 | -- |
| SN 084-0141 | MEDIAN BRIDGE PIER (WB) | 81.3 | 88.0 | 6.0 | 42.9 | 2.5 | 20.2 | A | -- | -- | 62.5 | 4.0 | 1 | 1 | 1 | -- |
| SN 084-0142 | MEDIAN BRIDGE PIER (EB) | 82.1 | 88.1 | 6.0 | 42.5 | 3.0 | 59.7 | A | -- | -- | 100.0 | 4.0 | 1 | 1 | 1 | -- |
| SN 084-0142 | MEDIAN BRIDGE PIER (WB) | 82.1 | 88.1 | 6.0 | 42.6 | 3.0 | 59.7 | A | -- | -- | 100.0 | 4.0 | 1 | 1 | 1 | -- |
| SN 084-0143 | MEDIAN BRIDGE PIER (EB) | 83.3 | 87.3 | 6.0 | 42.3 | 2.5 | 19.9 | A | -- | -- | 62.5 | 4.0 | 1 | 1 | 1 | -- |
| SN 084-0143 | MEDIAN BRIDGE PIER (WB) | 83.3 | 87.3 | 6.0 | 42.5 | 2.5 | 19.9 | A | -- | -- | 62.5 | 4.0 | 1 | 1 | 1 | -- |
| SN 084-0144 | MEDIAN BRIDGE PIER (EB) | 86.3 | 87.7 | 6.0 | 42.6 | 2.5 | 18.2 | A | -- | -- | 50.0 | 4.0 | 1 | 1 | 1 | -- |
| SN 084-0144 | MEDIAN BRIDGE PIER (WB) | 86.3 | 87.7 | 6.0 | 42.6 | 2.5 | 18.2 | A | -- | -- | 50.0 | 4.0 | 1 | 1 | 1 | -- |
| SN 084-0145 | MEDIAN BRIDGE PIER (EB) | 88.9 | 77.0 | 6.0 | 37.4 | 2.5 | 24.0 | A | -- | -- | 75.0 | 4.0 | 1 | 1 | 1 | -- |
| SN 084-0145 | MEDIAN BRIDGE PIER (WB) | 88.9 | 77.0 | 6.0 | 37.1 | 2.5 | 24.0 | A | -- | -- | 75.0 | 4.0 | 1 | 1 | 1 | -- |
| SN 084-0146 | MEDIAN BRIDGE PIER (EB) | 90.3 | 69.9 | 6.0 | 33.7 | 2.5 | 22.4 | A | -- | -- | 75.0 | 4.0 | 1 | 1 | 1 | -- |
| SN 084-0146 | MEDIAN BRIDGE PIER (WB) | 90.3 | 69.9 | 6.0 | 33.7 | 2.5 | 22.4 | A | -- | -- | 75.0 | 4.0 | 1 | 1 | 1 | -- |
| SN 084-0147 | MEDIAN BRIDGE PIER (EB) | 90.9 | 69.2 | 6.0 | 32.0 | 5.0 | 17.0 | A | -- | -- | 100.0 | 4.0 | 1 | 1 | 1 | -- |
| SN 084-0147 | MEDIAN BRIDGE PIER (WB) | 90.9 | 69.2 | 6.0 | 32.2 | 5.0 | 17.0 | A | -- | -- | 100.0 | 4.0 | 1 | 1 | 1 | -- |
| SN 084-0149 | EB MEDIAN SHOULDER | 91.3 | -- | -- | -- | -- | -- | C | 125.0 | 1 | 287.5 | 4.0 | 1 | 1 | -- | 1 |
| SN 084-0148 | WB MEDIAN SHOULDER | 91.4 | -- | -- | -- | -- | -- | C | 125.0 | 1 | 287.5 | 4.0 | 1 | 1 | -- | 1 |
| SN 084-0127 | EB MEDIAN SHOULDER | 92.4 | -- | -- | -- | -- | -- | C | 125.0 | 1 | 275.0 | 4.0 | 1 | 1 | -- | 1 |
| SN 084-0128 | WB MEDIAN SHOULDER | 92.5 | -- | -- | -- | -- | -- | C | 125.0 | 1 | 275.0 | 4.0 | 1 | 1 | -- | 1 |
| SN 084-0126 | MEDIAN BRIDGE PIER (EB) | 93.2 | 69.3 | 6.0 | 33.2 | 2.5 | 27.3 | A | -- | -- | 87.5 | 4.0 | 1 | 1 | 1 | -- |
| SN 084-0126 | MEDIAN BRIDGE PIER (WB) | 93.2 | 69.3 | 6.0 | 33.6 | 2.5 | 27.3 | A | -- | -- | 87.5 | 4.0 | 1 | 1 | 1 | -- |
| SN 084-0125 | MEDIAN BRIDGE PIER (EB) | 93.6 | 69.8 | 6.0 | 32.1 | 5.2 | 34.2 | A | -- | -- | 125.0 | 4.0 | 1 | 1 | 1 | -- |
| SN 084-0125 | MEDIAN BRIDGE PIER (WB) | 93.6 | 69.8 | 6.0 | 32.5 | 5.2 | 34.2 | B | -- | -- | 200.0 | 4.0 | 1 | 1 | 1 | -- |
| SN 084-0136 & SN 084-0137 | MEDIAN BRIDGE PIER (EB) | 94.0 | 70.3 | 6.0 | 31.3 | 2.5 | 141.6 | B | -- | -- | 275.0 | 4.0 | 1 | 1 | 1 | -- |
| SN 084-0136 & SN 084-0137 | MEDIAN BRIDGE PIER (WB) | 94.0 | 70.3 | 6.0 | 36.5 | 2.5 | 141.6 | B | -- | -- | 300.0 | 4.0 | 1 | 1 | 1 | -- |
| SN 084-0185 | MEDIAN BRIDGE PIER (EB) | 94.9 | 71.0 | 6.0 | 33.6 | 2.8 | 34.6 | A | -- | -- | 100.0 | 4.0 | 1 | 1 | 1 | -- |
| SN 084-0185 | MEDIAN BRIDGE PIER (WB) | 94.9 | 71.0 | 6.0 | 34.6 | 2.8 | 34.6 | A | -- | -- | 87.5 | 4.0 | 1 | 1 | 1 | -- |
| (6S0841072R095.6) | SIMPLE SPAN SIGN STRUCTURE (EB) | 95.6 | 68.9 | 6.0 | 30.3 | 2.5 | 11.5 | A | -- | -- | 75.0 | 4.0 | 1 | 1 | 1 | -- |
| (6S0841072R095.6) | SIMPLE SPAN SIGN STRUCTURE (WB) | 95.6 | 68.9 | 6.0 | 36.1 | 2.5 | 11.5 | A | -- | -- | 62.5 | 4.0 | 1 | 1 | 1 | -- |
| SN 084-0104 | MEDIAN BRIDGE PIER (EB) | 96.8 | 63.5 | 6.0 | 29.7 | 2.5 | 16.4 | A | -- | -- | 87.5 | 4.0 | 1 | 1 | 1 | -- |
| SN 084-0104 | MEDIAN BRIDGE PIER (WB) | 96.8 | 63.5 | 6.0 | 31.3 | 2.5 | 16.4 | A | -- | -- | 75.0 | 4.0 | 1 | 1 | 1 | -- |
| (6S0841072R097.0) | SIMPLE SPAN SIGN STRUCTURE (EB) | 97.0 | 63.4 | 6.0 | 29.8 | 3.0 | 13.0 | A | -- | -- | 87.5 | 4.0 | 1 | 1 | 1 | -- |
| (6S0841072R097.0) | SIMPLE SPAN SIGN STRUCTURE (WB) | 97.0 | 63.4 | 6.0 | 30.6 | 3.0 | 13.0 | A | -- | -- | 87.5 | 4.0 | 1 | 1 | 1 | -- |
| SN 084-0077 | EB MEDIAN SHOULDER | 97.3 | -- | -- | -- | -- | -- | -- | 100.0 | 1 | 387.5 | 4.0 | 1 | 1 | -- | -- |
| SN 084-0076 | WB MEDIAN SHOULDER | 97.4 | -- | -- | -- | -- | -- | -- | 100.0 | 1 | 375.0 | 4.0 | 1 | 1 | -- | -- |
| SN 084-0050 | EB MEDIAN SHOULDER | 103.1 | -- | -- | -- | -- | -- | -- | 125.0 | 1 | 312.5 | 4.0 | 1 | 1 | -- | -- |
| SN 084-0051 | WB MEDIAN SHOULDER | 103.2 | -- | -- | -- | -- | -- | -- | 125.0 | 1 | 337.5 | 4.0 | 1 | 1 | -- | -- |
| SN 084-0150 | MEDIAN BRIDGE PIER (EB) | 103.9 | 67.0 | 6.0 | 32.0 | 2.9 | 63.5 | A | -- | -- | 125.0 | 4.0 | 1 | 1 | 1 | -- |
| SN 084-0150 | MEDIAN BRIDGE PIER (WB) | 103.9 | 67.0 | 6.0 | 32.1 | 2.9 | 63.5 | A | -- | -- | 125.0 | 4.0 | 1 | 1 | 1 | -- |
| (6S0841072L104.2) | SIMPLE SPAN SIGN STRUCTURE (EB) | 104.2 | 91.8 | 6.0 | 50.2 | 3.0 | 13.0 | A | -- | -- | 37.5 | 4.0 | 1 | 1 | 1 | -- |
| (6S0841072L104.2) | SIMPLE SPAN SIGN STRUCTURE (WB) | 104.2 | 91.8 | 6.0 | 38.6 | 3.0 | 13.0 | A | -- | -- | 62.5 | 4.0 | 1 | 1 | 1 | -- |
| (6S0841072L105.9) | SIMPLE SPAN SIGN STRUCTURE (EB) | 105.9 | 88.5 | 6.0 | 54.9 | 2.5 | 12.0 | A | -- | -- | 25.0 | 4.0 | 1 | 1 | 1 | -- |
| (6S0841072L105.9) | SIMPLE SPAN SIGN STRUCTURE (WB) | 105.9 | 88.5 | 6.0 | 31.1 | 2.5 | 12.0 | A | -- | -- | 75.0 | 4.0 | 1 | 1 | 1 | -- |
| SN 084-0151 | MEDIAN BRIDGE PIER (EB) | 106.1 | 87.8 | 6.0 | 42.9 | 2.9 | 29.0 | A | -- | -- | 75.0 | 4.0 | 1 | 1 | 1 | -- |
| SN 084-0151 | MEDIAN BRIDGE PIER (WB) | 106.1 | 87.8 | 6.0 | 42.0 | 2.9 | 29.0 | A | -- | -- | 75.0 | 4.0 | 1 | 1 | 1 | -- |
| SN 084-0153 | EB MEDIAN SHOULDER | 106.7 | -- | -- | -- | -- | -- | C | 125.0 | 1 | 350.0 | 4.0 | 1 | 1 | -- | 1 |

CONTINUED ON NEXT PAGE

| | |
|--|--|
| | |
| | |
| | |
| | |
| | |
| | |
| | |
| | |
| | |
| | |
| | |

ILLINOIS DEPARTMENT OF TRANSPORTATION

SCHEDULE OF QUANTITIES

FAI 72
 SECTION D-6 MEDIAN PROTECTION 2007-1
 ADAMS, MORGAN, PIKE, SANGAMON
 AND SCOTT COUNTIES

| F.A.I. RTE. | SECTION | COUNTY | TOTAL SHEETS | SHEET NO. |
|-------------|---------|--------|--------------|-----------|
| 72 | * | ** | 12 | 7 |

| | |
|---------------------|---------------------------|
| STA. | TO STA. |
| FED. ROAD DIST. NO. | ILLINOIS FED. AID PROJECT |

* - D-6 MEDIAN PROTECTION 2007-1
 ** - ADAMS, MORGAN, PIKE, SANGAMON AND SCOTT COUNTIES

SCHEDULE FOR SAFETY IMPROVEMENTS

| GENERAL LOCATION | DESCRIPTION OF HAZARD | STA OF HAZARD | EXISTING MEDIAN WIDTH | EXISTING SHOULDER WIDTH | HAZARD OFFSET FROM EDGE OF PAVEMENT | WIDTH OF HAZARD | LENGTH OF HAZARD | PROPOSED IMPROVEMENT SEE DETAIL | GUARDRAIL REMOVAL | TRAFFIC BARRIER TERMINAL REMOVAL | SPBGR TYPE A | GUARDRAIL REFLECTORS | TRAFFIC BARRIER TERMINAL TYPE 1, SPL (TANGENT) | TERMINAL MARKER - DIRECT APPLIED | TRAFFIC BARRIER TERMINAL TYPE 2 | TRAFFIC BARRIER TERMINAL TYPE 6 SPECIAL |
|----------------------------------|-------------------------|---------------|-----------------------|-------------------------|-------------------------------------|-----------------|------------------|---------------------------------|-------------------|----------------------------------|--------------|----------------------|--|----------------------------------|---------------------------------|---|
| | | (MILE STA) | (FOOT) | (FOOT) | (FOOT) | (FOOT) | (FOOT) | (FOOT) | (A, B, OR C) | (FOOT) | (EACH) | (FOOT) | (EACH) | (EACH) | (EACH) | (EACH) |
| I-72 SANGAMON COUNTY (CONTINUED) | | | | | | | | | | | | | | | | |
| SN 084-0152 | WB MEDIAN SHOULDER | 106.8 | -- | -- | -- | -- | -- | C | 125.0 | 1 | 350.0 | 4.0 | 1 | 1 | -- | 1 |
| SN 084-0154 | MEDIAN BRIDGE PIER (EB) | 108.1 | 88.0 | 6.0 | 42.2 | 2.8 | 60.5 | A | -- | -- | 100.0 | 4.0 | 1 | 1 | 1 | -- |
| SN 084-0154 | MEDIAN BRIDGE PIER (WB) | 108.1 | 88.0 | 6.0 | 43.0 | 2.8 | 60.5 | A | -- | -- | 100.0 | 4.0 | 1 | 1 | 1 | -- |
| SN 084-0155 | MEDIAN BRIDGE PIER (EB) | 111.1 | 89.1 | 6.0 | 43.8 | 2.5 | 25.5 | A | -- | -- | 62.5 | 4.0 | 1 | 1 | 1 | -- |
| SN 084-0155 | MEDIAN BRIDGE PIER (WB) | 111.1 | 89.1 | 6.0 | 42.8 | 2.5 | 25.5 | A | -- | -- | 62.5 | 4.0 | 1 | 1 | 1 | -- |
| SN 084-0156 | MEDIAN BRIDGE PIER (EB) | 114.2 | 88.5 | 6.0 | 42.9 | 3.0 | 60.9 | A | -- | -- | 100.0 | 4.0 | 1 | 1 | 1 | -- |
| SN 084-0156 | MEDIAN BRIDGE PIER (WB) | 114.2 | 88.5 | 6.0 | 42.6 | 3.0 | 60.9 | A | -- | -- | 100.0 | 4.0 | 1 | 1 | 1 | -- |
| SN 084-0158 | EB MEDIAN SHOULDER | 116.3 | -- | -- | -- | -- | -- | C | 125.0 | 1 | 400.0 | 4.0 | 1 | 1 | -- | 1 |
| SN 084-0157 | WB MEDIAN SHOULDER | 116.4 | -- | -- | -- | -- | -- | C | 125.0 | 1 | 400.0 | 4.0 | 1 | 1 | -- | 1 |
| SN 084-0159 | MEDIAN BRIDGE PIER (EB) | 117.2 | 87.6 | 6.0 | 42.4 | 2.5 | 19.4 | A | -- | -- | 62.5 | 4.0 | 1 | 1 | 1 | -- |
| SN 084-0159 | MEDIAN BRIDGE PIER (WB) | 117.2 | 87.6 | 6.0 | 42.7 | 2.5 | 19.4 | A | -- | -- | 50.0 | 4.0 | 1 | 1 | 1 | -- |
| SN 084-0160 | MEDIAN BRIDGE PIER (EB) | 119.3 | 86.7 | 6.0 | 42.1 | 2.5 | 19.6 | A | -- | -- | 62.5 | 4.0 | 1 | 1 | 1 | -- |
| SN 084-0160 | MEDIAN BRIDGE PIER (WB) | 119.3 | 86.7 | 6.0 | 42.1 | 2.5 | 19.6 | A | -- | -- | 62.5 | 4.0 | 1 | 1 | 1 | -- |
| SN 084-0161 | MEDIAN BRIDGE PIER (EB) | 121.3 | 87.6 | 6.0 | 42.2 | 2.5 | 20.4 | A | -- | -- | 62.5 | 4.0 | 1 | 1 | 1 | -- |
| SN 084-0161 | MEDIAN BRIDGE PIER (WB) | 121.3 | 87.6 | 6.0 | 42.9 | 2.5 | 20.4 | A | -- | -- | 62.5 | 4.0 | 1 | 1 | 1 | -- |
| SN 084-0162 | MEDIAN BRIDGE PIER (EB) | 122.3 | 88.0 | 6.0 | 42.8 | 2.8 | 60.9 | A | -- | -- | 100.0 | 4.0 | 1 | 1 | 1 | -- |
| SN 084-0162 | MEDIAN BRIDGE PIER (WB) | 122.3 | 88.0 | 6.0 | 42.4 | 2.8 | 60.9 | A | -- | -- | 100.0 | 4.0 | 1 | 1 | 1 | -- |
| I-72 SANGAMON COUNTY SUB-TOTAL = | | | | | | | | | 1450.0 | 12.0 | 8637.5 | 256.0 | 64.0 | 64.0 | 52.0 | 8.0 |

SUMMARY

| GENERAL LOCATION | GUARDRAIL REMOVAL | TRAFFIC BARRIER TERMINAL REMOVAL | SPBGR TYPE A | GUARDRAIL REFLECTORS | TRAFFIC BARRIER TERMINAL TYPE 1, SPL (TANGENT) | TERMINAL MARKER - DIRECT APPLIED | TRAFFIC BARRIER TERMINAL TYPE 2 | TRAFFIC BARRIER TERMINAL TYPE 6 SPECIAL |
|----------------------------------|-------------------|----------------------------------|--------------|----------------------|--|----------------------------------|---------------------------------|---|
| | (FOOT) | (EACH) | (FOOT) | (EACH) | (EACH) | (EACH) | (EACH) | (EACH) |
| I-72 PIKE COUNTY SUB-TOTAL = | 0.0 | 0.0 | 350.0 | 16.0 | 4.0 | 4.0 | 4.0 | 0.0 |
| I-72 SCOTT COUNTY SUB-TOTAL = | 0.0 | 0.0 | 550.0 | 32.0 | 8.0 | 8.0 | 8.0 | 0.0 |
| I-72 MORGAN COUNTY SUB-TOTAL = | 0.0 | 0.0 | 2925.0 | 96.0 | 24.0 | 24.0 | 24.0 | 0.0 |
| I-72 SANGAMON COUNTY SUB-TOTAL = | 1450.0 | 12.0 | 8637.5 | 256.0 | 64.0 | 64.0 | 52.0 | 8.0 |
| TOTAL = | 1450.0 | 12.0 | 12462.5 | 400.0 | 100.0 | 100.0 | 88.0 | 8.0 |

| NAME | DATE |
|------|------|
| | |
| | |
| | |
| | |
| | |
| | |
| | |
| | |
| | |
| | |

ILLINOIS DEPARTMENT OF TRANSPORTATION

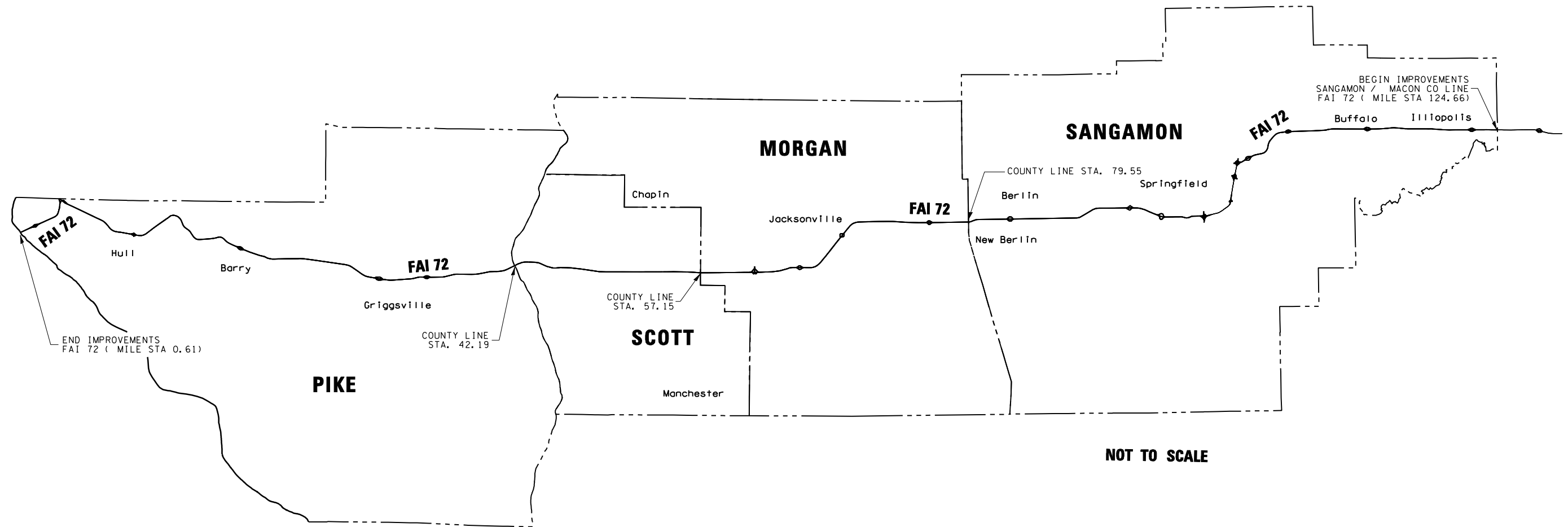
SCHEDULE OF QUANTITIES

FAI 72
 SECTION D-6 MEDIAN PROTECTION 2007-1
 ADAMS, MORGAN, PIKE, SANGAMON
 AND SCOTT COUNTIES

| F.A.I. RTE. | SECTION | COUNTY | TOTAL SHEETS | SHEET NO. |
|-------------|---------|--------|--------------|-----------|
| 72 | * | ** | 12 | 8 |

| STA. | TO STA. |
|---------------------|---------------------------|
| FED. ROAD DIST. NO. | ILLINOIS FED. AID PROJECT |

* - D-6 MEDIAN PROTECTION 2007-1
 ** - ADAMS, MORGAN, PIKE, SANGAMON AND SCOTT COUNTIES



NOT TO SCALE

| REVISIONS | |
|-----------|------|
| NAME | DATE |
| | |
| | |
| | |
| | |
| | |
| | |
| | |
| | |
| | |
| | |

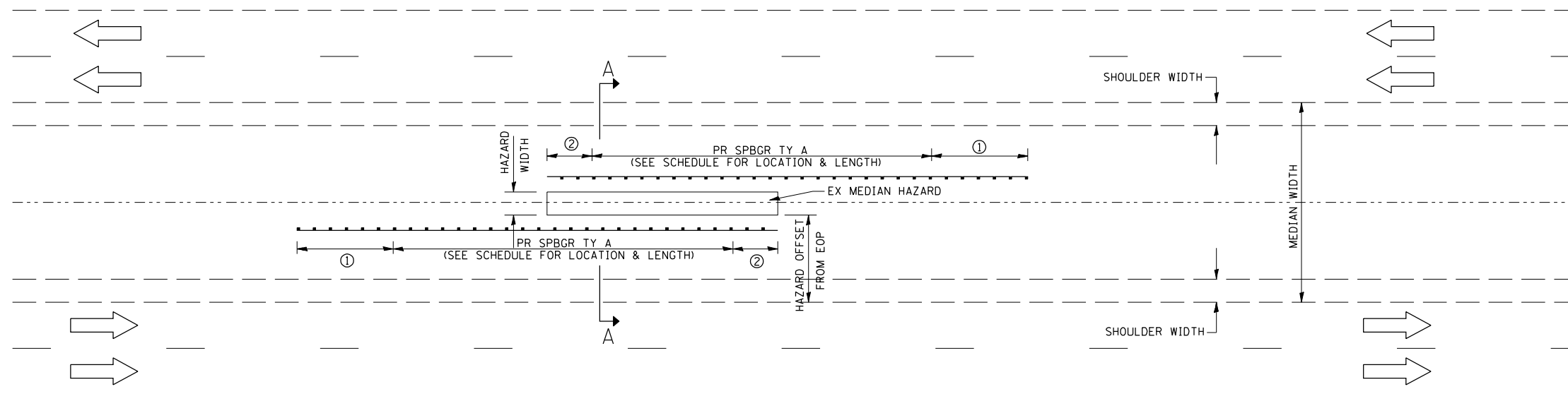
ILLINOIS DEPARTMENT OF TRANSPORTATION
 PLAN SHEET
 FAI 72
 FAI 72
 SECTION D-6 MEDIAN PROTECTION 2007-1
 ADAMS, MORGAN, PIKE, SANGAMON
 AND SCOTT COUNTIES

PLOT DATE = 5/10/2007
 FILE NAME = c:\p\projects\d653007\shplanschematic.dgn
 PLOT SCALE = 1/8"=1' / IN.
 USER NAME = laughlin-1

| F.A.I. RTE. | SECTION | COUNTY | TOTAL SHEETS | SHEET NO. |
|-------------|---------|--------|--------------|-----------|
| 72 | * | ** | 12 | 9 |

| FED. ROAD DIST. NO. | ILLINOIS | FED. AID PROJECT |
|---------------------|----------|------------------|
| | | |

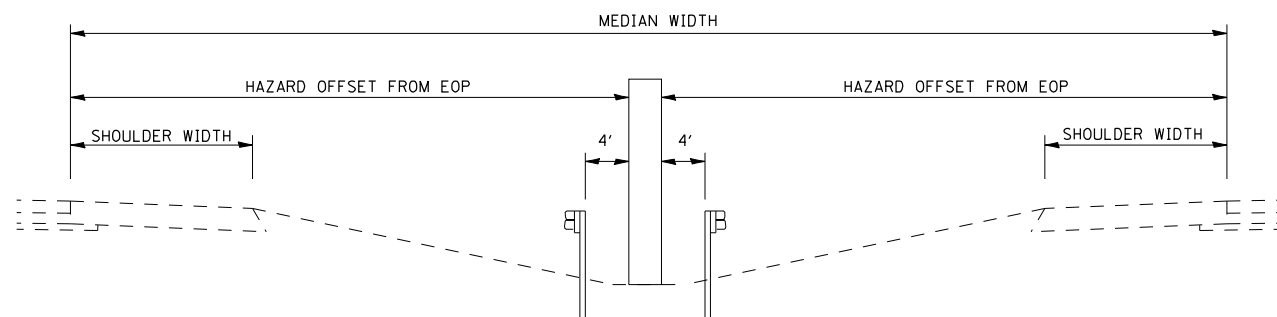
* - D-6 MEDIAN PROTECTION 2007-1
 ** - ADAMS, MORGAN, PIKE, SANGAMON AND SCOTT COUNTIES



DETAIL "A"

(PROPOSED PROTECTION OF MEDIAN HAZARD WITH PROPOSED GUARDRAIL)

- ① PR TRAFFIC BARRIER TERMINAL, TYPE 1, SPECIAL (TANGENT)
- ② PR TRAFFIC BARRIER TERMINAL, TYPE 2
NOTE: TYPE 2 TERMINATES AT END OF HAZARD



SECTION A-A

(TYPICAL CROSS SECTION)

| REVISIONS | |
|-----------|------|
| NAME | DATE |
| | |
| | |
| | |
| | |
| | |
| | |
| | |
| | |
| | |
| | |

ILLINOIS DEPARTMENT OF TRANSPORTATION

DETAIL "A"

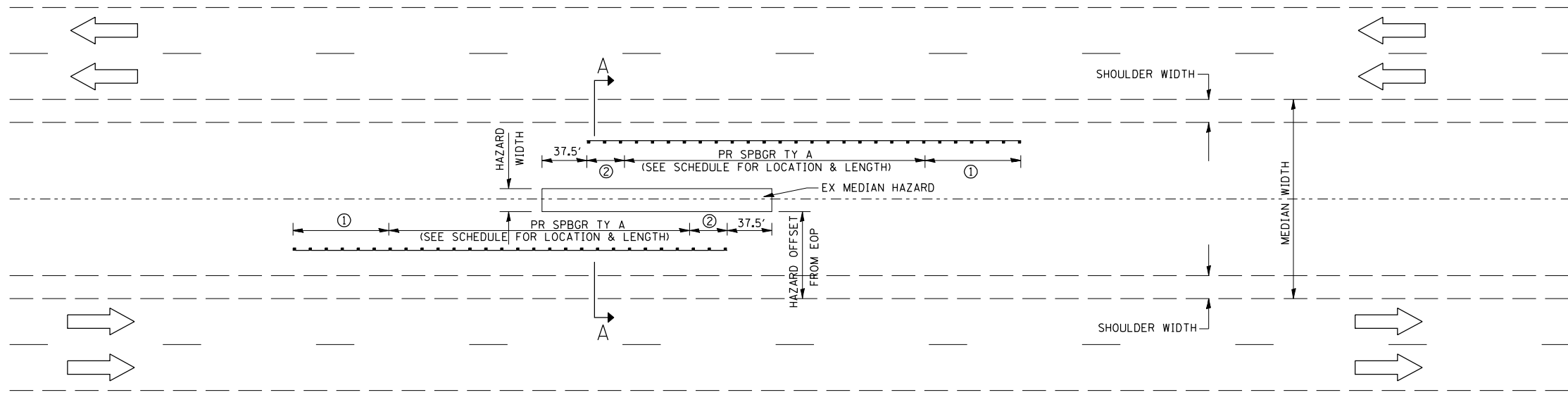
FAI 72
 SECTION D-6 MEDIAN PROTECTION 2007-1
 ADAMS, MORGAN, PIKE, SANGAMON
 AND SCOTT COUNTIES

PLOT DATE = 5/10/2007
 FILE NAME = c:\p\projects\d653007\shdetalls.dgn
 PLOT SCALE = 1/8" = 1' / IN.
 USER NAME = laughlin

| F.A.I. RTE. | SECTION | COUNTY | TOTAL SHEETS | SHEET NO. |
|-------------|---------|--------|--------------|-----------|
| 72 | * | ** | 12 | 10 |

| FED. ROAD DIST. NO. | ILLINOIS | FED. AID PROJECT |
|---------------------|----------|------------------|
| | | |

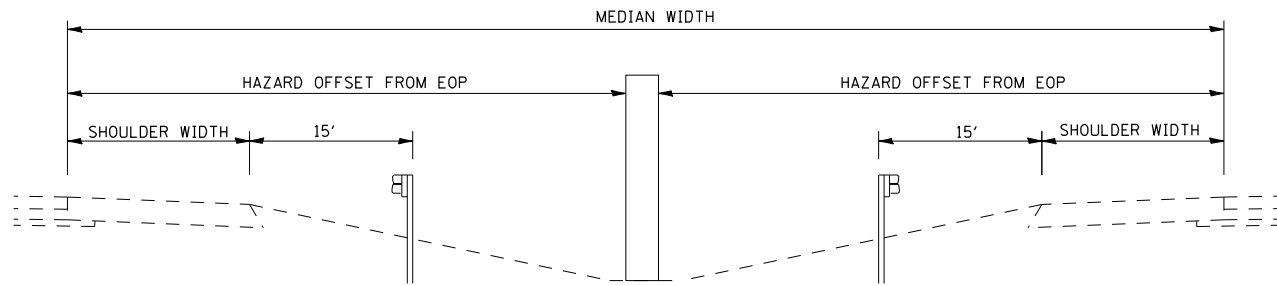
* - D-6 MEDIAN PROTECTION 2007-1
 ** - ADAMS, MORGAN, PIKE, SANGAMON AND SCOTT COUNTIES



DETAIL "B"

(PROPOSED PROTECTION OF MEDIAN HAZARD WITH PROPOSED GUARDRAIL)

- ① PR TRAFFIC BARRIER TERMINAL, TYPE 1, SPECIAL (TANGENT)
- ② PR TRAFFIC BARRIER TERMINAL, TYPE 2
 NOTE: TYPE 2 TERMINATES 37.5 FT BEFORE END OF HAZARD



SECTION A-A

(TYPICAL CROSS SECTION)

| REVISIONS | |
|-----------|------|
| NAME | DATE |
| | |
| | |
| | |
| | |
| | |
| | |
| | |
| | |
| | |
| | |

ILLINOIS DEPARTMENT OF TRANSPORTATION

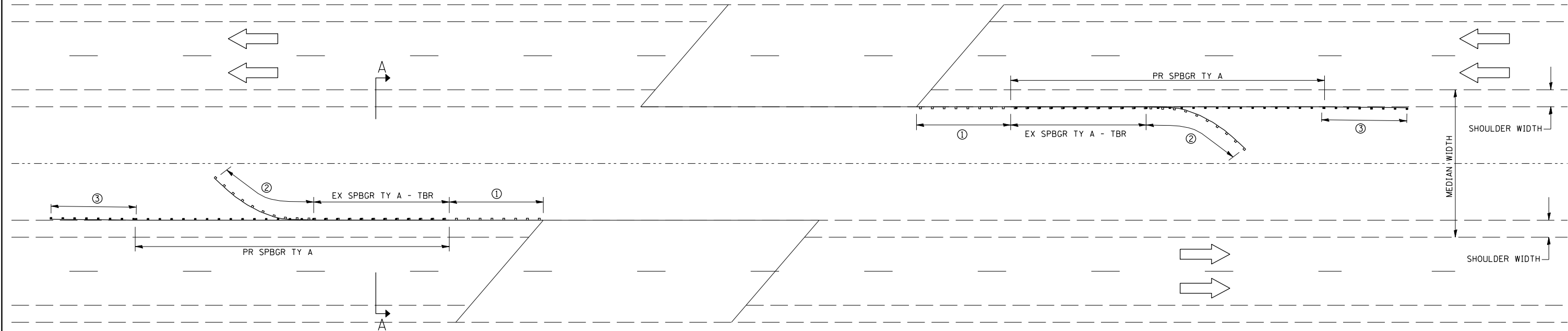
DETAIL "B"

FAI 72
 SECTION D-6 MEDIAN PROTECTION 2007-1
 ADAMS, MORGAN, PIKE, SANGAMON
 AND SCOTT COUNTIES

PLOT DATE = 5/10/2007
 FILE NAME = c:\p\projects\d653007\shdetalls.dgn
 PLOT SCALE = 1/8" = 1' / IN.
 USER NAME = laughlin

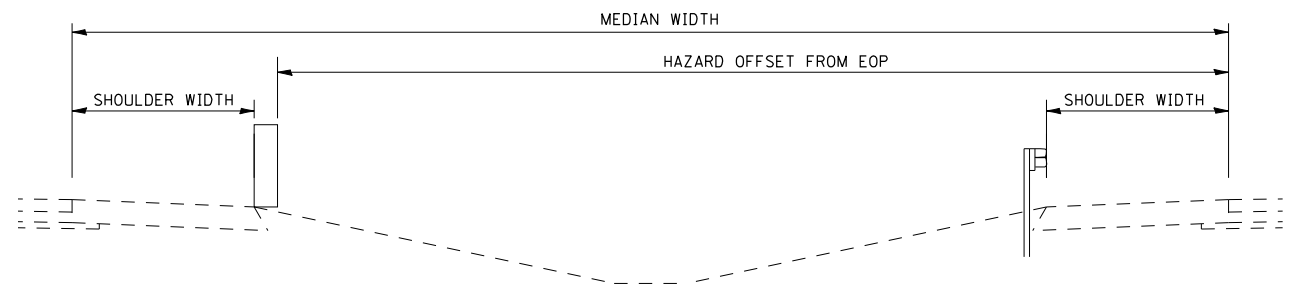
| F.A.I. RTE. | SECTION | COUNTY | TOTAL SHEETS | SHEET NO. |
|---------------------|----------|------------------|--------------|-----------|
| 72 | * | ** | 12 | 11 |
| STA. | | TO STA. | | |
| FED. ROAD DIST. NO. | ILLINOIS | FED. AID PROJECT | | |

* - D-6 MEDIAN PROTECTION 2007-1
 ** - ADAMS, MORGAN, PIKE, SANGAMON AND SCOTT COUNTIES



DETAIL "C"
 (PROPOSED PROTECTION OF AT GRADE HAZARD WITH PROPOSED GUARDRAIL IMPROVEMENT)

- ① EX TRAFFIC BARRIER TERMINAL, TYPE 6
PR TRAFFIC BARRIER TERMINAL, TYPE 6, SPECIAL
- ② EX TRAFFIC BARRIER TERMINAL, TYPE 4 - TO BE REMOVED
- ③ PR TRAFFIC BARRIER TERMINAL, TYPE 1 - TANGENT



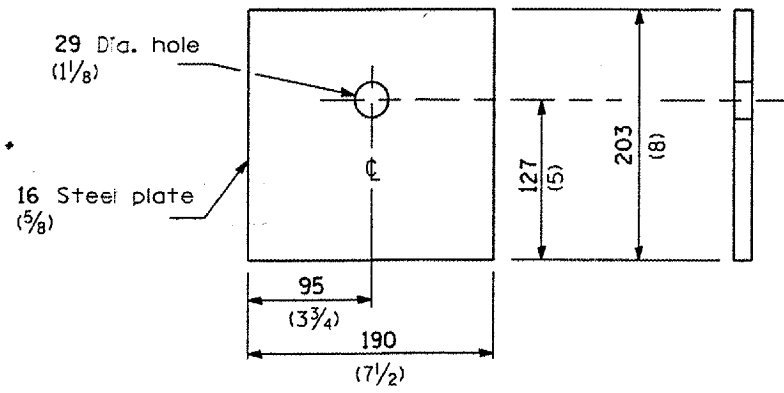
SECTION A-A
 (TYPICAL CROSS SECTION)

| REVISIONS | |
|-----------|------|
| NAME | DATE |
| | |
| | |
| | |
| | |
| | |
| | |
| | |
| | |
| | |
| | |

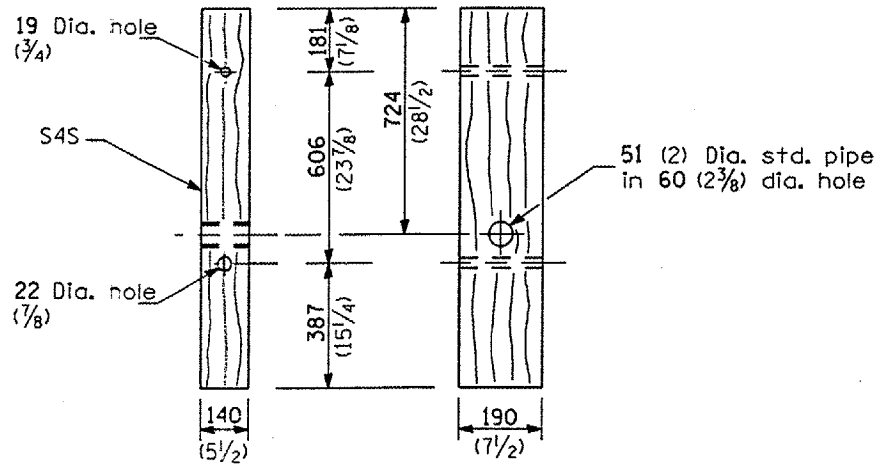
ILLINOIS DEPARTMENT OF TRANSPORTATION
 DETAIL "C"
 FAI 72
 SECTION D-6 MEDIAN PROTECTION 2007-1
 ADAMS, MORGAN, PIKE, SANGAMON
 AND SCOTT COUNTIES

PLOT DATE = 5/10/2007
 FILE NAME = c:\p\projects\d653007\shdetalls.dgn
 PLOT SCALE = 1/8" = 1' / IN.
 USER NAME = laughlin

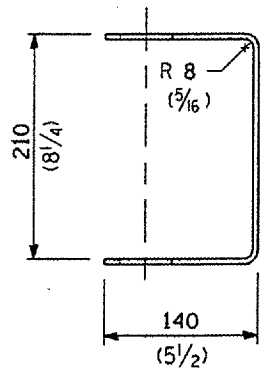
| F.A.A. DIST. NO. | SECTION | COUNTY | TOTAL SHEETS | SHEET NO. |
|---------------------|----------|------------------|--------------|-----------|
| 72 D-6 Med. | VAR. | 12 | 12A | |
| FED. ROAD DIST. NO. | ILLINOIS | FED. AID PROJECT | | |



BEARING PLATE K

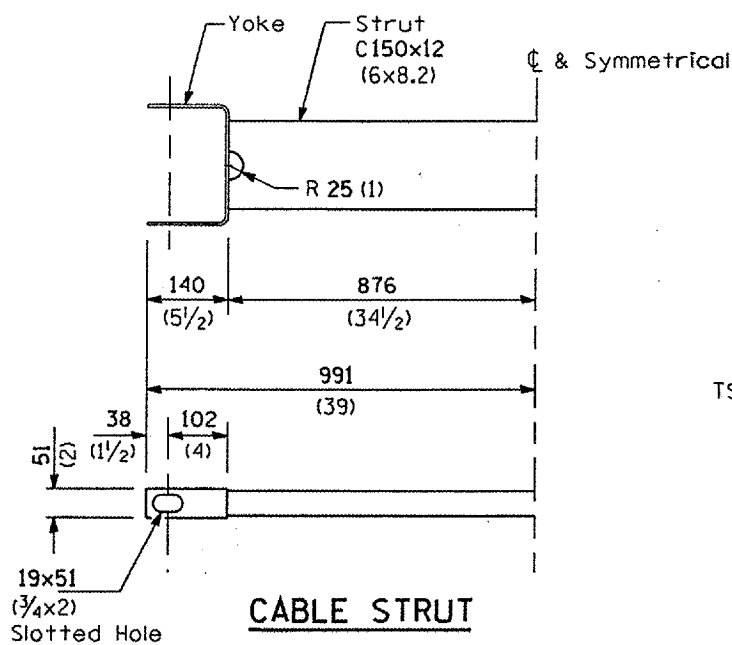


WOOD POST

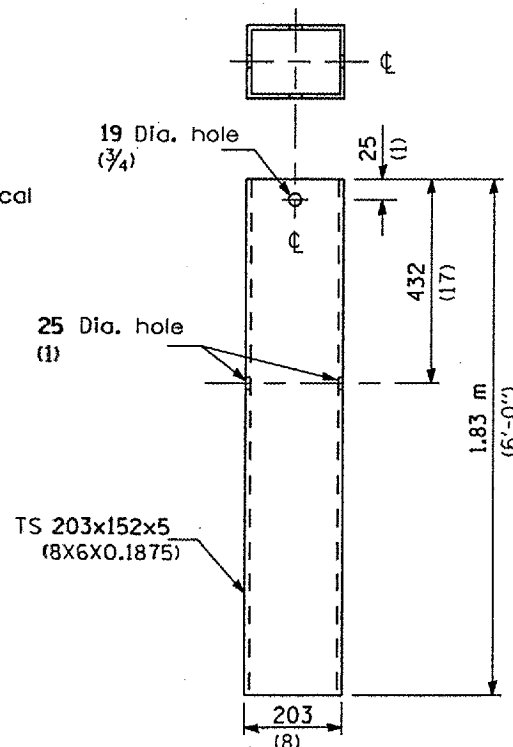


YOKE

5 (3/16) thick steel



CABLE STRUT



STEEL TUBE

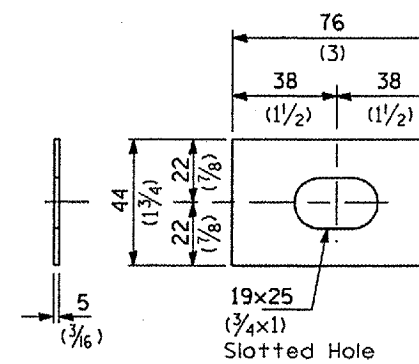
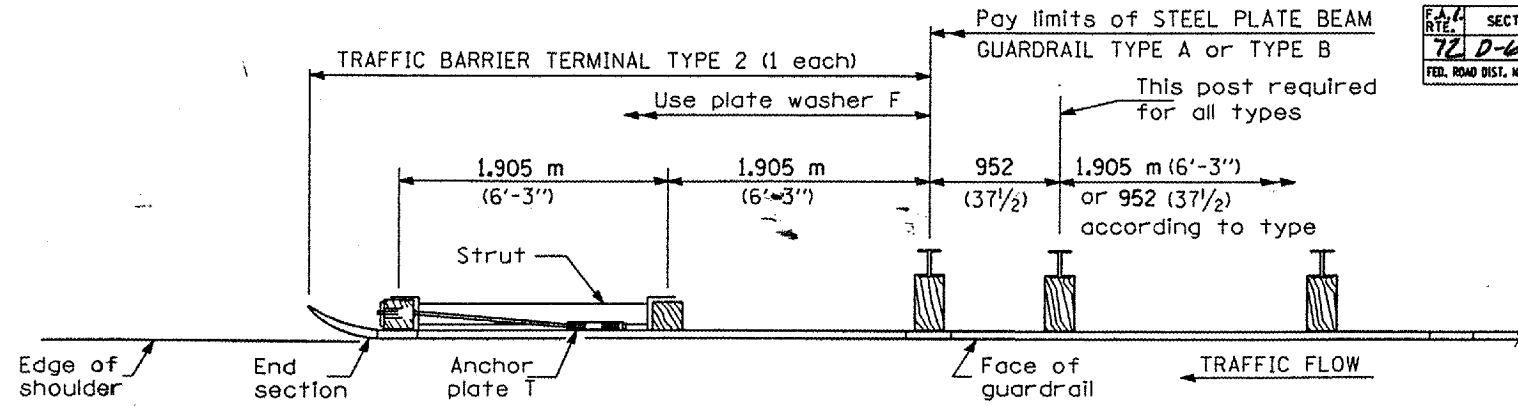
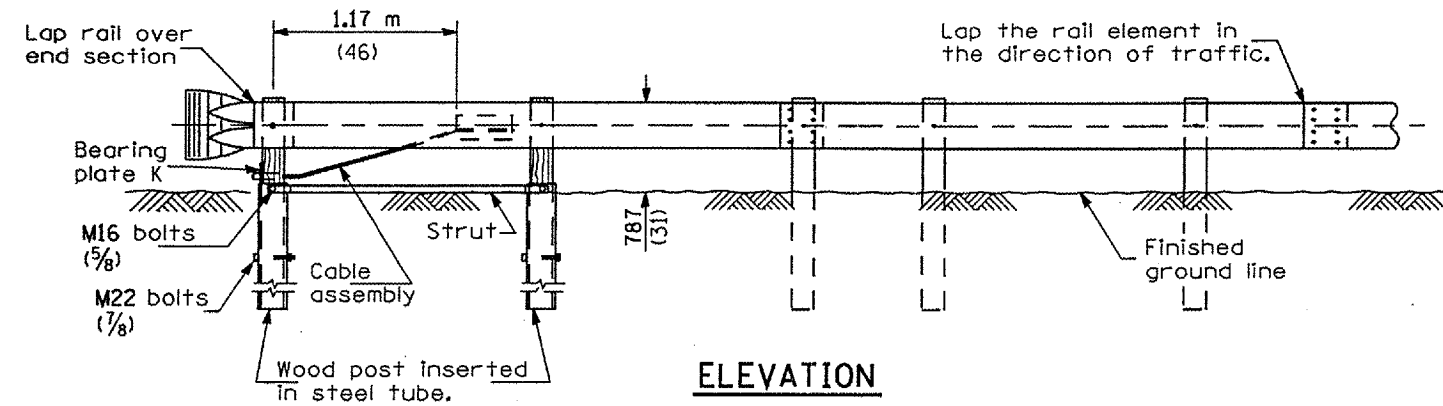


PLATE WASHER F



PLAN



ELEVATION

GENERAL NOTES

See Standard 630001 for details of guardrail not shown.

The bearing plate K shall be held in position by (2) two eight penny nails driven into the post and bent over the top of the plate.

All dimensions are in millimeters (inches) unless otherwise shown.

TRAFFIC BARRIER TERMINAL, TYPE 2

DETAIL