

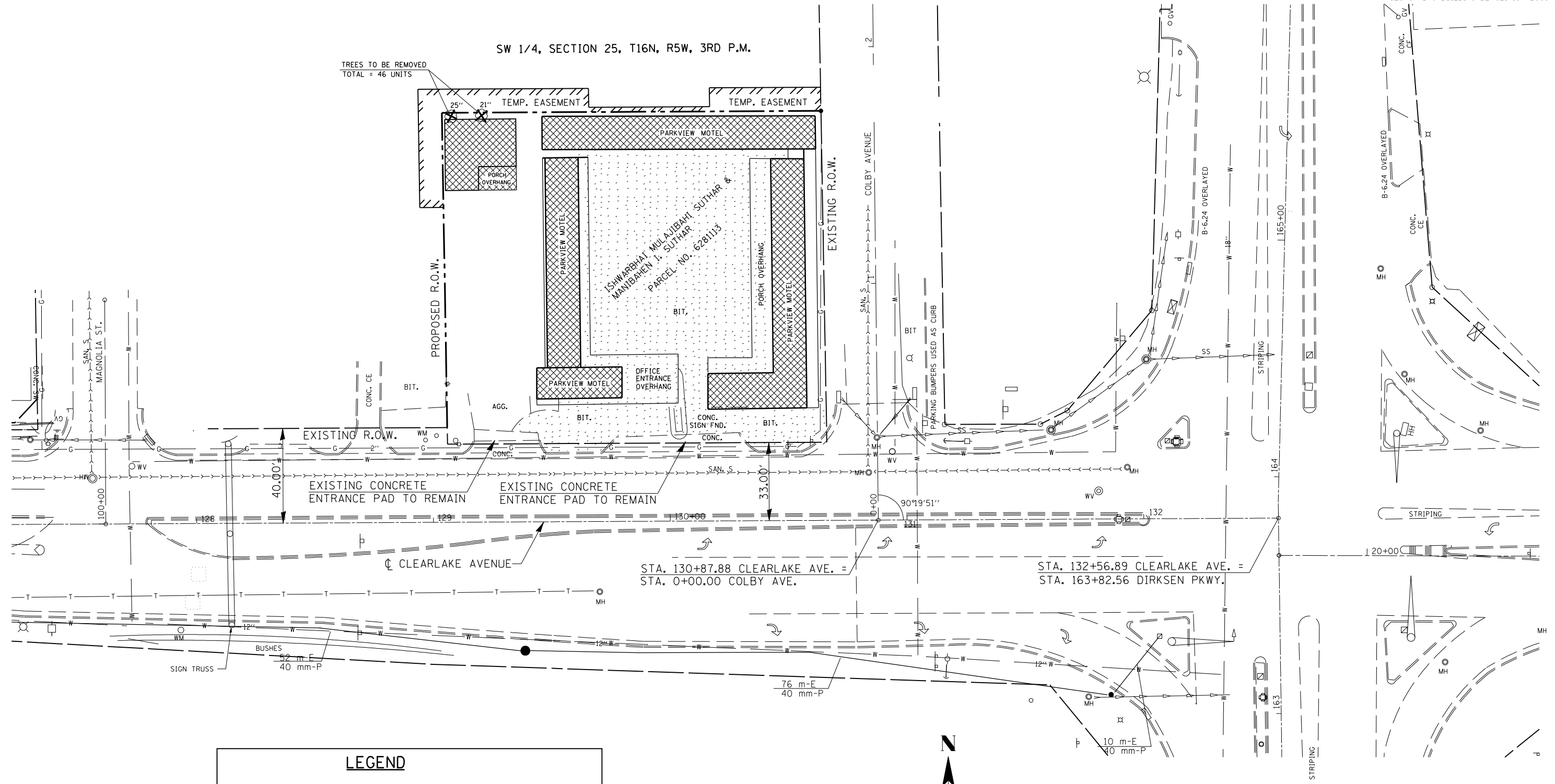
F.A. RTE.	SECTION	COUNTY	TOTAL SHEETS	SHEET NO.
67		SANGAMON	8	5

STA.	TO STA.
FED. ROAD DIST. NO.	ILLINOIS FED. AID PROJECT

SECTION D-6 BUILDING DEMOLITION 2008-01

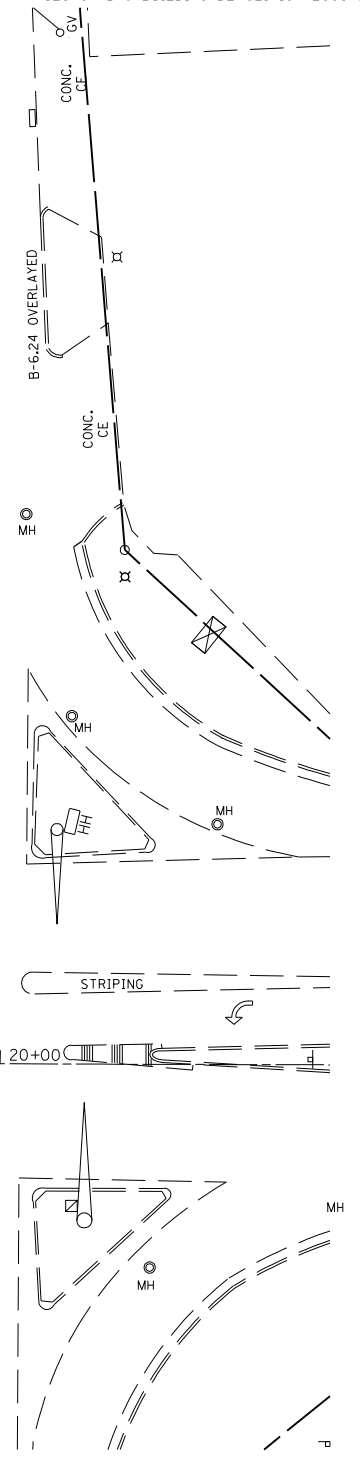
SW 1/4, SECTION 25, T16N, R5W, 3RD P.M.

TREES TO BE REMOVED  
TOTAL = 46 UNITS



**LEGEND**

	PROPOSED BUILDING REMOVAL
	PROPOSED PAVEMENT REMOVAL (TO BE INCLUDED IN THE COSTS FOR "BUILDING REMOVAL NO. 1,2,3,&4") TOTAL PAVEMENT AREA = 1102 SQ. YDS.



STA. 130+87.88 CLEARLAKE AVE. = STA. 0+00.00 COLBY AVE.

STA. 132+56.89 CLEARLAKE AVE. = STA. 163+82.56 DIRKSEN PKWY.

PLOT DATE = 5/17/2007  
FILE NAME = c:\p\projects\6810007\ah\plot.dgn  
PLOT SCALE = 42,352% / IN.  
USER NAME = laughlin-1

REVISIONS	
NAME	DATE

ILLINOIS DEPARTMENT OF TRANSPORTATION

**PROPOSED PROJECT LAYOUT**

FA ROUTE 67 (CLEARLAKE AVENUE)

SECTION D-6 BUILDING DEMOLITION 2008-01

SANGAMON COUNTY

SCALE: VERT. / HORIZ.  
DATE MAY 14, 2007

DRAWN BY RTS  
CHECKED BY