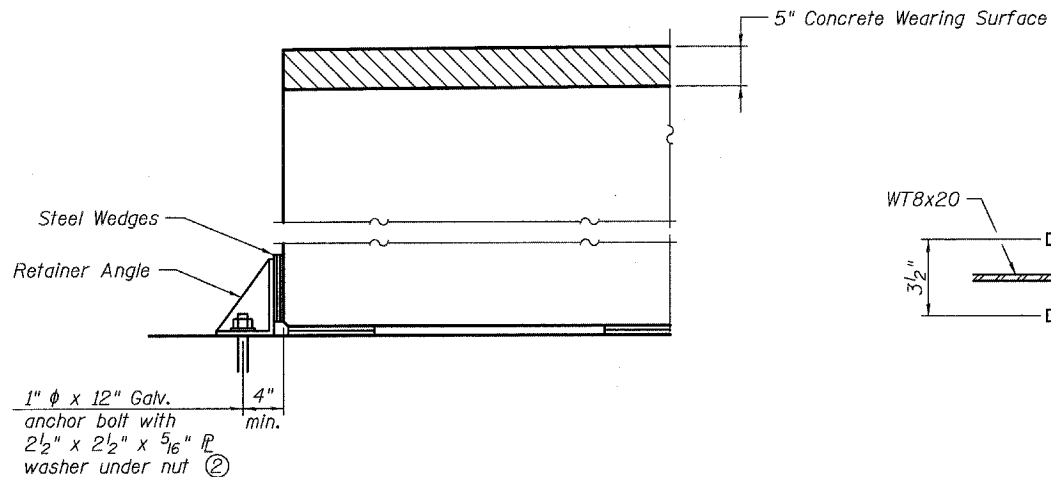


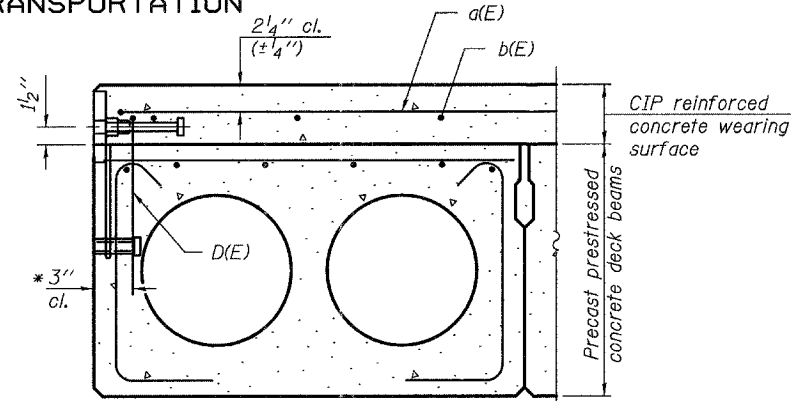
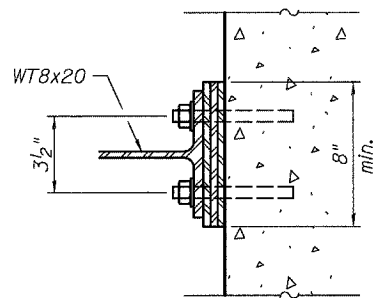
STATE OF ILLINOIS
DEPARTMENT OF TRANSPORTATION

ROUTE NO.	SECTION	COUNTY	TOTAL SHEETS	SHEET NO.	SHEET NO. 9 15 SHEETS
F.A.P. RTE. 793	112BR-2	BOND	52	37	
FED. ROAD DIST. NO. 7	ILLINOIS	FED. AID PROJECT			

Contract #76897

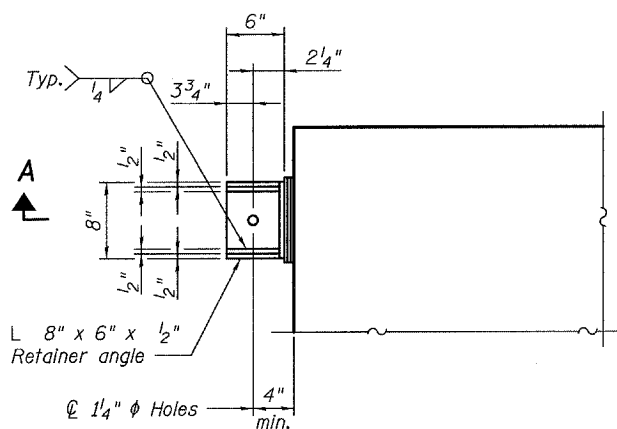


SECTION A-A

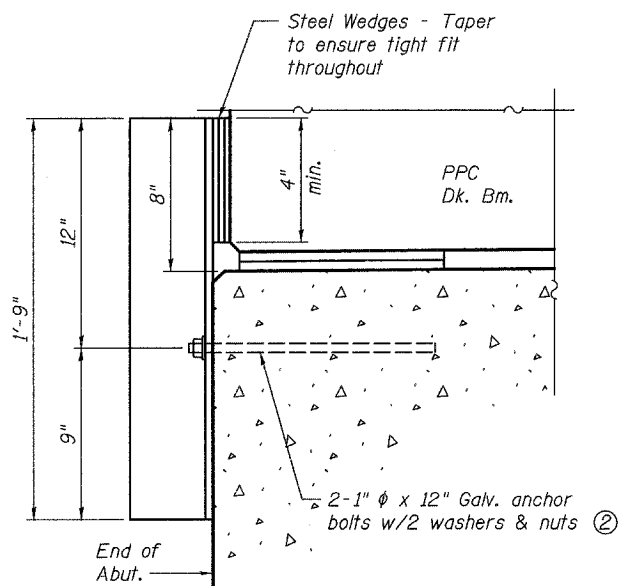


CROSS SECTION B-B

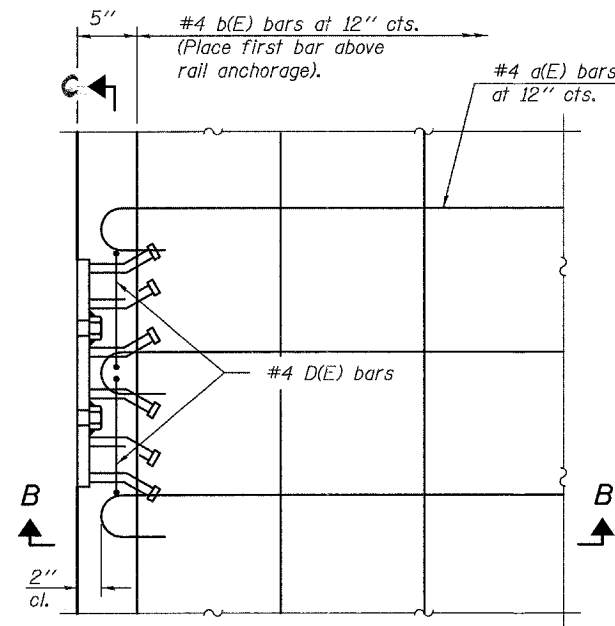
* May need to tilt D(E) bar to miss bottom rail anchorage.



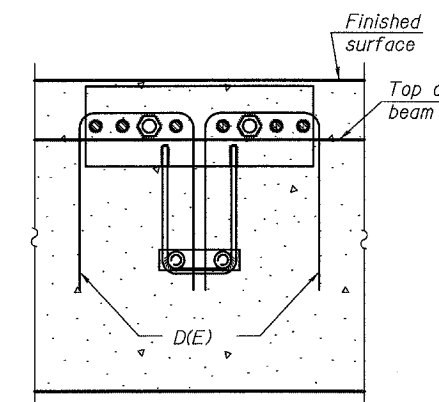
PLAN



ALTERNATE RETAINER



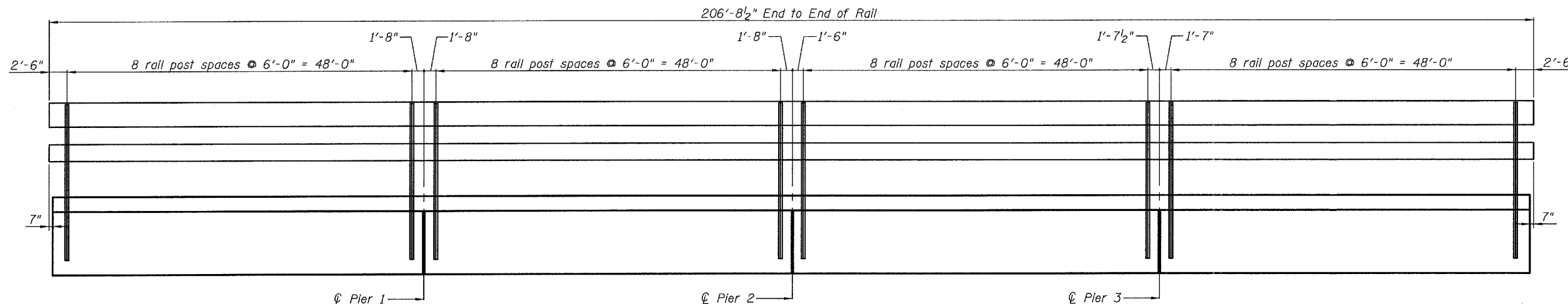
PLAN



SECTION C-C

RETAINER ASSEMBLY AT EXPANSION JOINT

RAIL ANCHORAGE



RAIL POST SPACING

Notes:

- Retainer angles are to be used at the expansion ends of deck beams only. After block-outs are poured and cured the retainer angles shall be removed. Anchor bolts may be left in place.
- Approved threaded rod shall be placed in drilled holes and grouted in place. Cost of retainer and accessories are included with Precast Prestressed Concrete Deck Beams (21" Depth).
- Cost of 1/2 inch Standard pipe shall be included in the cost of the Precast Prestressed Concrete Deck Beams (21" Depth).
- Retainer assembly shall not be installed until all adjacent partial depth concrete repair work is completed.
- The rail anchorage shall be cast with the beam and the wearing surface shall be cast in the field. Formwork necessary for the wearing surface may be secured utilizing the bottom rail anchorage inserts and/or additional inserts cast into the beam. Drilling into the beam will not be permitted.

SUPERSTRUCTURE DETAILS
IL ROUTE 143 OVER BEAVER CREEK
F.A.P. ROUTE 793 - SECTION 112BR-2
BOND COUNTY
STA. 670+40
STRUCTURE NO. 003-0035