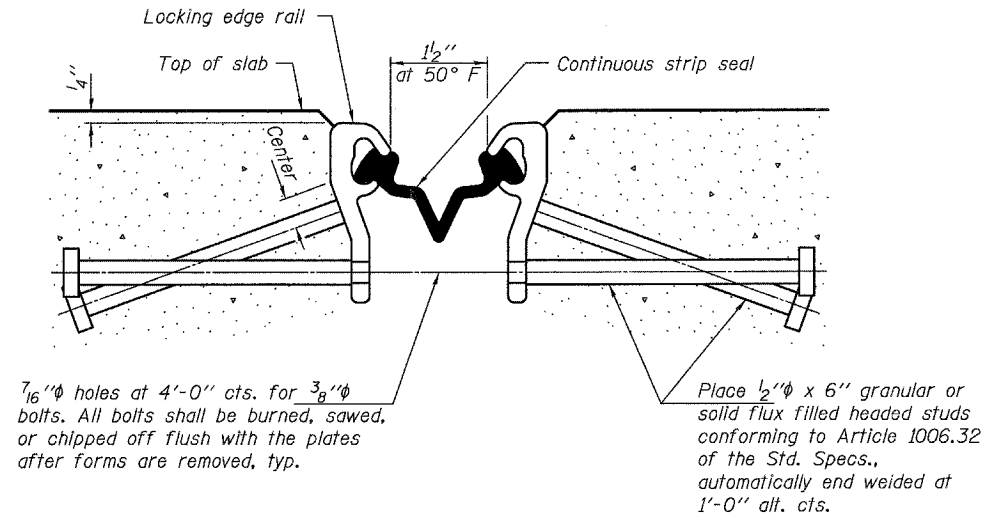


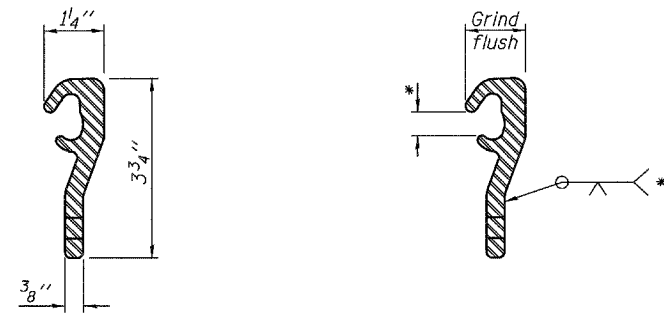
STATE OF ILLINOIS  
DEPARTMENT OF TRANSPORTATION

ROUTE NO.	SECTION	COUNTY	TOTAL SHEETS	SHEET NO.	SHEET NO. 10
F.A.P. RTE. 793	112BR-2	BOND	52	38	15 SHEETS
FED. ROAD DIST. NO. 7	ILLINOIS	FED. AID PROJECT-			

Contract #76897



SECTION THRU STRIP SEAL JOINT  
FOR OVERLAY OVER DECK BEAMS



LOCKING EDGE RAIL

LOCKING EDGE RAIL SPLICE

\* Omit weld at seal opening.

Notes:

The strip seal shall be made continuous and shall have a minimum thickness of 1/4". The configuration of the strip seal shall match the configuration of the Locking Edge Rails.

The height and thickness of the Locking Edge Rails shown are minimum dimensions. The actual configuration of the Locking Edge Rails and matching strip seal may vary from manufacturer to manufacturer. Flanged edge rails will not be allowed.

The inside of the Locking Edge Rail groove shall be free of weld residue.

Locking Edge Rails may be spliced at slope discontinuities and stage construction joints.

The manufacturer's recommended installation methods shall be followed.

BILL OF MATERIAL

Item	Unit	Total
Preformed Joint Strip Seal	Foot	66

PREFORMED JOINT STRIP SEAL  
IL ROUTE 143 OVER BEAVER CREEK  
F.A.P. ROUTE 793 - SECTION 112BR-2  
BOND COUNTY  
STA. 670+40  
STRUCTURE NO. 003-0035