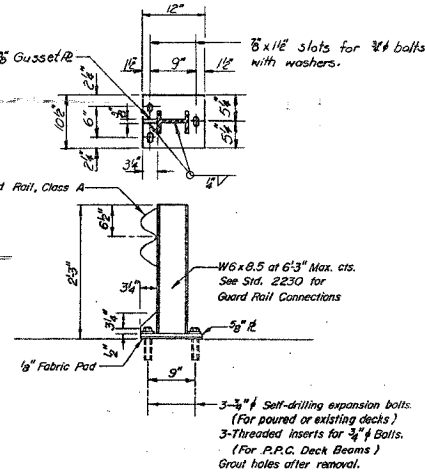
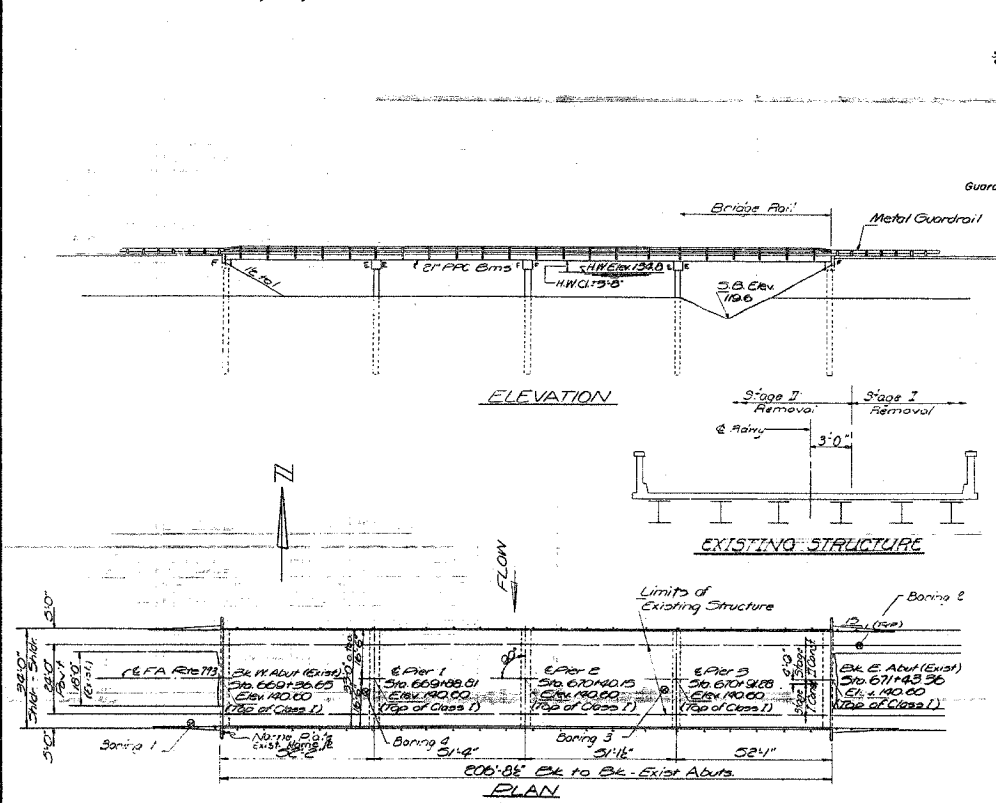


F.A.P. RTE.	SECTION	COUNTY	TOTAL SHEETS	SHEET NO.
793	112BR-2	BOND	52	43A
STA.		TO STA.		
FED. ROAD DIST. NO.		ILLINOIS FED. AID PROJECT		

B.M. P.P. Spikes in 14" Hickory 103' Lt Sta 666+00 Elev. 142.94
 Existing Structure: Built as SBI 127A Sec. 112B Sta. 670+40
 in 1934, Superstr. is I-Beams with RC Deck. Substr.
 is RC Pile Bents. Contractor shall remove existing Superstr.
 Traffic shall be maintained using stage construction.

STATE OF ILLINOIS
 DEPARTMENT OF TRANSPORTATION

DATE	REVISION	BY	CHKD.	APP'D.
1-1-79	1	BR-1	41	34
SHEET NO. 43		OF SHEETS 52		



GENERAL NOTES

All reinforcement bars shall be lapped 24 diameters unless otherwise shown.

It shall be the responsibility of the Contractor to verify all dimensions and conditions existing in the field prior to construction and ordering of materials.

The top surface of the beams shall be finished in accordance with Article 505.06 of the Standard Specifications except that the surface shall not be roughened by brooming. The finished surface shall be free of depressions or high spots with sharp corners.

All structural steel shall be shop painted with two coats of basic lead silico chromate paint.

The Contractor shall drive Concrete test pile in a permanent location at Pier 2 as directed by the Engineer before ordering the remainder of piles.

Expansion bolts shall consist of self drilling expansion anchors and 3/4\"/>

TEMPORARY GUARD RAIL DETAIL
 See Special Provisions

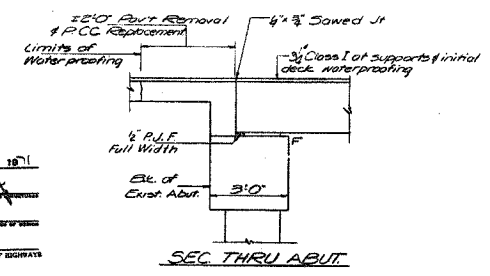
TOTAL BILL OF MATERIAL

Item	Unit	Super	Sub	Total
Bituminous Concrete Surface Course, Class 1	Tons	114		114
Rev't Rein. & P.P.C. Replacement Type I (107)	Sq.Yds	8		8
Removal of Existing Superstructures	Each	1		1
Concrete Removal	Cu.Yds		5	5
Expansion Bolts (3/4")	Each		210	210
Class X Concrete	Cu.Yds	3.0	38.4	41.4
Precast Prestressed Concrete Deck Beams (Type I)	Sq. Ft.	6776		6776
Structural Steel	Lbs.	4690		4690
Steel Railing Type N	Lin. Ft.	412		412
Reinforcement Bars	Lbs.	430	1850	2280
Concrete Piles	Lin. Ft.		315	315
Test Piles (Concrete)	Each		1	1
Name Plate	Each		1	1
Temporary Guardrail	Lin. Ft.	207		207
Waterproofing Membrane System	Sq. Yds	782		782
Preformed Joint Sealer (267)	Lin. Ft.	67		67
Portland Cement Mortar Fairing Course	Lin. Ft.	2053		2053

STATION 670+40
 RESULT IS BY
 STATE OF ILLINOIS
 FA. RT. 793 SEC. 112-BR-1
 PROJECT F-793(3)
 LOADING HS 20
 # STR. NO.
NAME PLATE
 See STD 6113

*Structure Number to be supplied by District

DESIGNED	Suresh T. Desai	EXAMINED	June 15, 1971
CHECKED	James P. Jones	PASSED	
DRAWN	Fernando	APPROVED	
CHECKED	JP		

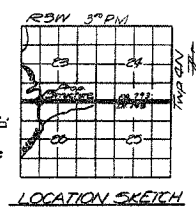


DESIGN STRESSES

PRECAST PRESTRESSED UNITS
 Fc: 5000 psi
 Ft: 4000 psi
 Fc: 27,000 psi Strands
 Ft: 183,000 psi Strands

FIELD UNITS
 Fc: 1400 psi Super
 Ft: 1000 psi Sub
 Fc: 20,000 psi Reinf
 Ft: 75 psi Footings
 n: 10
 Allowable Fut: 145,000 psi
 Design Specifications 1969 AASHTO as applicable

LOADING HS 20-44



PROJECT F-793(3)
 GENERAL PLAN AND ELEVATION
 FA 793 OVER BEAVER CREEK
 FA RTE 793 SEC. 112-BR-1
 BOND COUNTY
 STA. 670+40

FOR INFORMATION ONLY

REVISIONS	
NAME	DATE

ILLINOIS DEPARTMENT OF TRANSPORTATION
EXISTING STRUCTURE PLAN
 FAP ROUTE 793
 SECTION 112BR-2
 BOND COUNTY
 SN 003-0035

PLOT DATE = 5/1/2007
 FILE NAME = c:\p\projects\793\plan\plan03795.dgn
 PLOT NO. = 1
 REFERENCE = SHEET 4