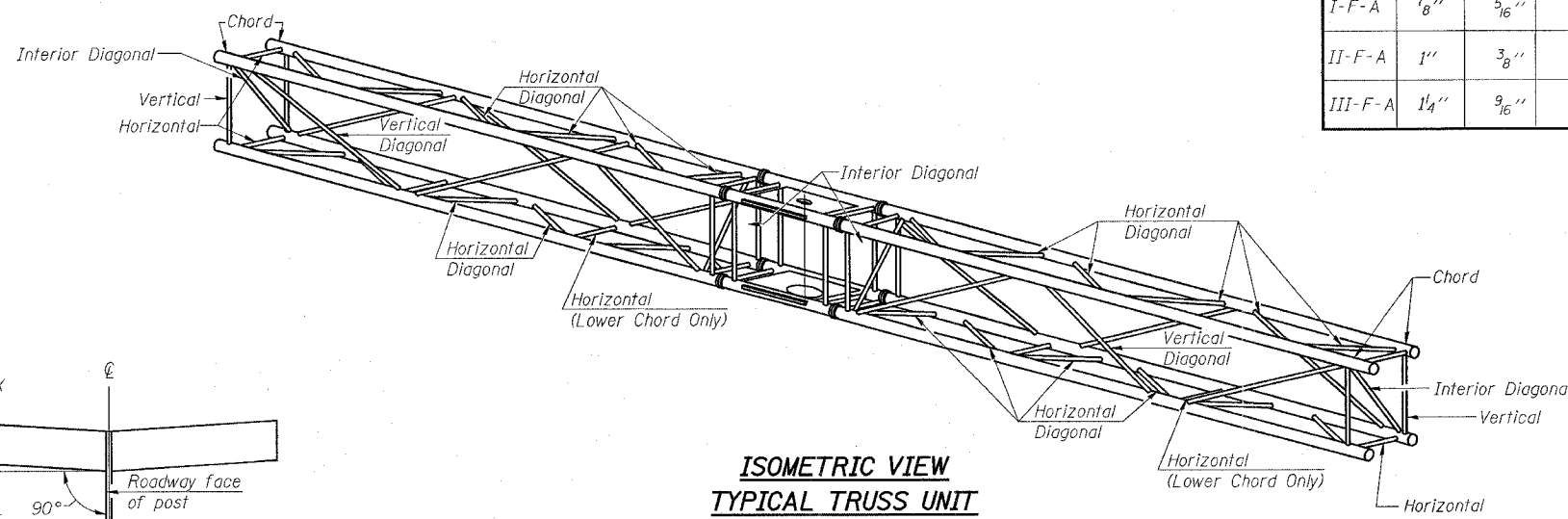


F.A.I. RTE.	SECTION	COUNTY	TOTAL SHEETS	SHEET NO.
55/70	•	MADISON	19	9
STA.		TO STA.		
FED. ROAD DIST. NO. - ILLINOIS FED. AID PROJECT				

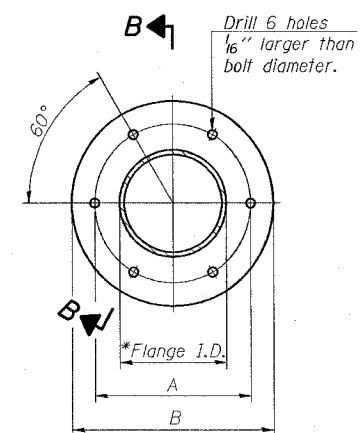
**SHOP CAMBER TABLE**

Unit Length L <sub>1</sub> or L <sub>2</sub>	Shop Camber at End
15'	1 1/2"
16'-17'	1 3/4"
18'-20'	2"
21'-22'	2 1/4"
23'-25'	2 1/2"
26'-27'	2 3/4"
28'-30'	3"
31'-32'	3 1/4"
33'-35'	3 1/2"

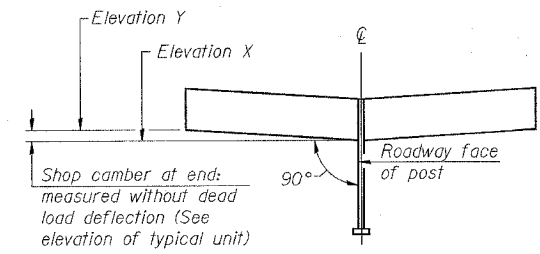


**ISOMETRIC VIEW  
TYPICAL TRUSS UNIT**  
ASTM B221 Alloy 6061 Temper T6

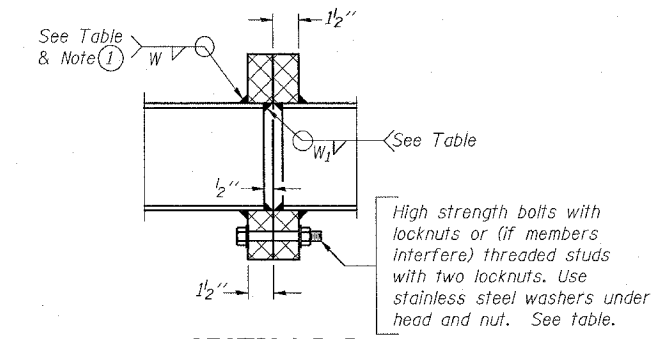
Truss Type	Bolts Dia.	Weld Sizes		A	B
		W	W <sub>1</sub>		
I-F-A	7/8"	5/16"	1/4"	8 3/4"	11 3/4"
II-F-A	1"	3/8"	1/4"	11"	14 1/2"
III-F-A	1 1/4"	9/16"	5/16"	11 1/2"	15"



**SPLICING FLANGE**  
ASTM B221, Alloy 6061-T6  
or ASTM B209, Alloy 6061-T651  
\* To fit O.D. of Chord with maximum gap of 1/16".

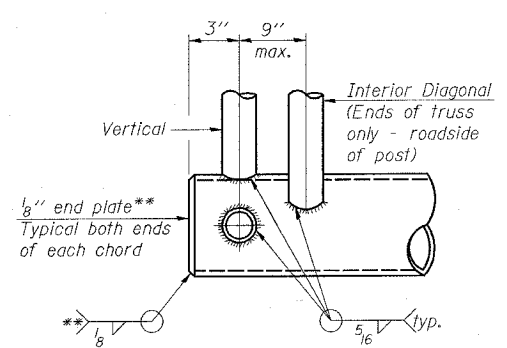


**CAMBER DIAGRAM**  
(For Fabrication Only)



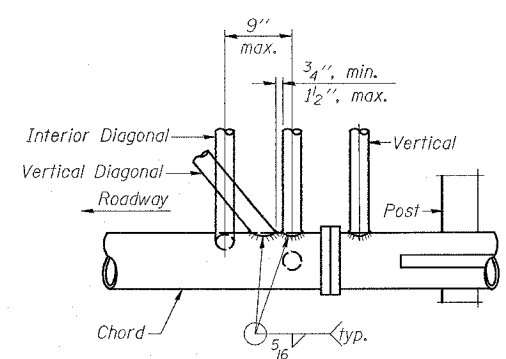
**SECTION B-B**

① Splicing Flanges shall be attached to each truss unit with the truss shop assembled to camber shown. Truss units shall be in proper alignment and flange surfaces shall be shop bolted into full contact before welding. Sufficient external welds or tacks shall be made to secure flanges until remaining welds are made after disassembly. Adjacent flanges shall be "match marked" to insure proper field assembly.

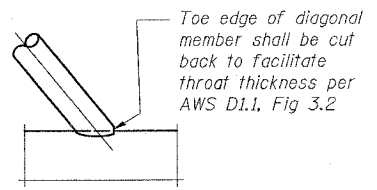


**BUTTERFLY END JOINT DETAIL**

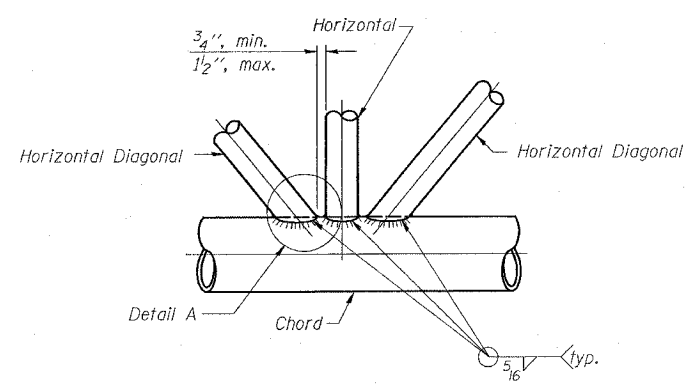
\*\* Contractor may alternatively use standard aluminum drive-fit cap to close ends.



**POST END JOINT DETAIL**



**DETAIL A**



**TRUSS INTERIOR JOINT DETAIL**

**BUTTERFLY SIGN STRUCTURES  
TRUSS DETAILS  
ALUMINUM TRUSS & STEEL POST**

FAI ROUTE 70/55  
DIST 8 ITS 2007-4a, 4b  
MADISON COUNTY

PLOT DATE = 5/9/2007  
FILE NAME = C:\projects\76a41\electrical\truss\truss.dgn  
PLOT SCALE = 49.5/88.7 IN.  
USER NAME = prestone