

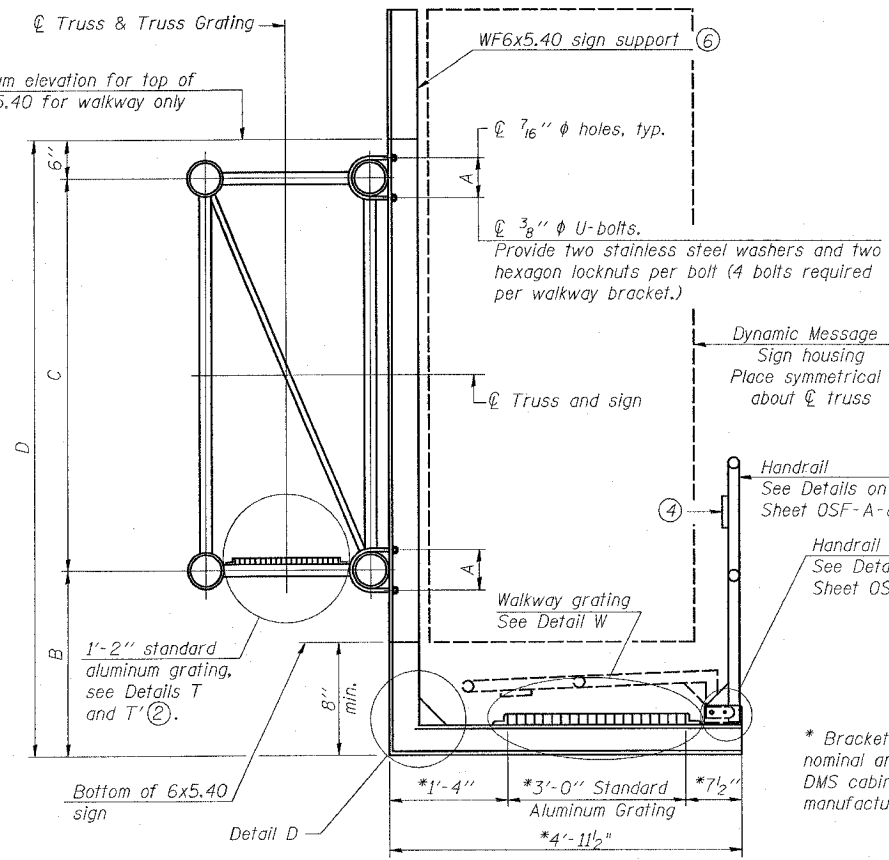
F.A.I. ROUTE	SECTION	COUNTY	TOTAL SHEETS	SHEET NO.
55/70		MADISON	19	13
STA.		TO STA.		
FED. ROAD DIST. NO.		ILLINOIS FED. AID PROJECT		
=DISI_8_ITS_2007-4a_4b				

SPECIFICATIONS FOR STANDARD ALUMINUM GRATING

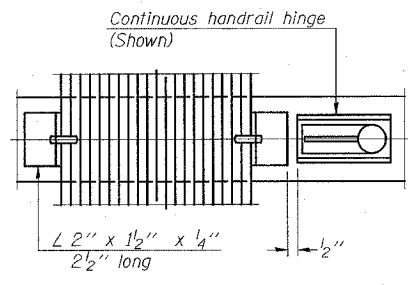
Main Bearing Bars (MBB) shall be 3/16" x 1 1/2" on 1 3/16" centers and conform to ASTM B211 Alloy 6061-T6.
 Cross bars (CB) shall be 3/16" x 1 1/2" on 4" centers and conform to ASTM B221 Alloy 6063-T5 or 6061-T6.

OR

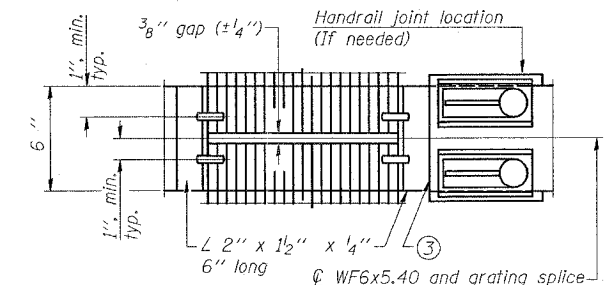
Aluminum Grating with modified "T" sections for main bearing bars shall meet the following requirements:
 Main bars shall conform to ASTM B221 Alloy 6061-T6 and have a minimum section modulus equal to 0.0705 in.³ per bar, a depth of 1 1/2", spaced on 1 3/16" centers.
 Cross bars shall conform to ASTM B221 Alloy 6063-T5 or T-42 and spaced on 4" centers.



SECTION B-B

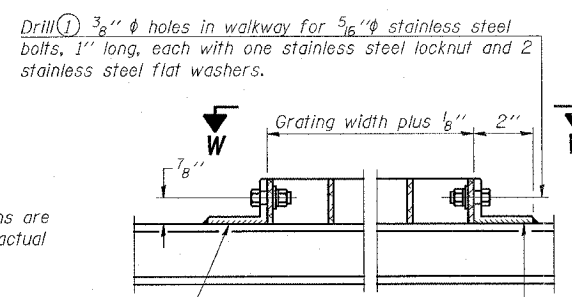


(CONTINUOUS WALKWAY GRATING)

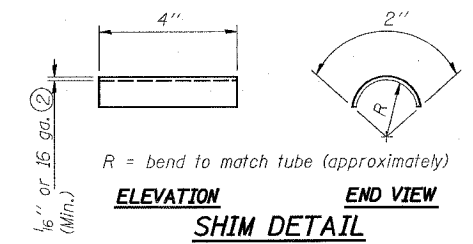


(AT WALKWAY GRATING SPLICE)

SECTION W-W

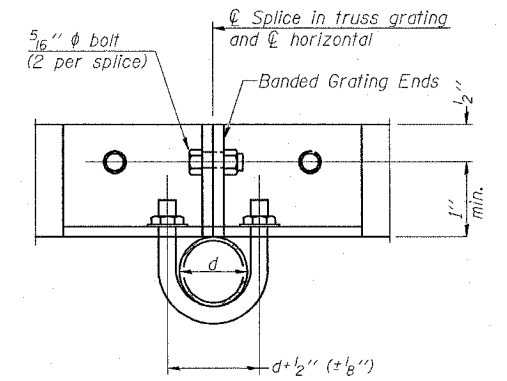


DETAIL W
(Walkway grating)

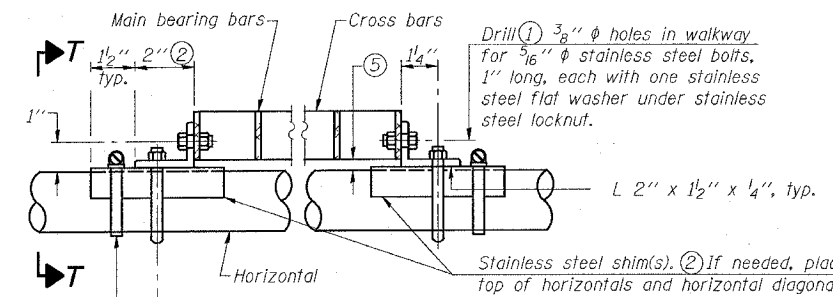


DETAIL T'

(Truss grating splice)
 Details not shown same as Detail T.
 Alternate materials may be used subject to the Engineer's review and approval.

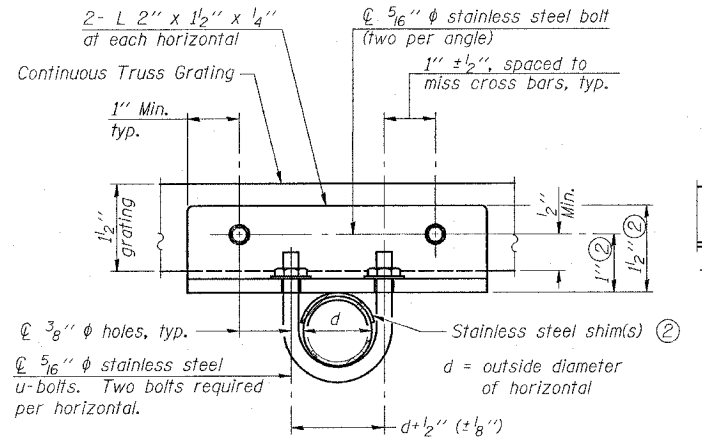


SECTION T'-T'

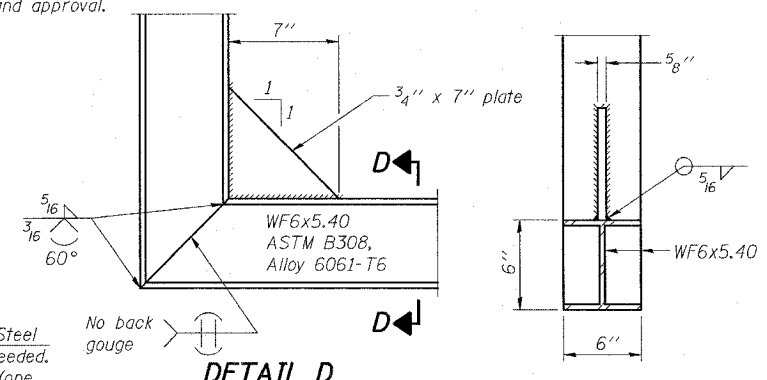


DETAIL T

(Continuous Truss grating)



SECTION T-T



DETAIL D

SECTION D-D

NUMBER	REVISION	DATE

- Drilling holes in grating may be done in shop or field, based on Contractor's preference and subject to accurate alignment.
- Stainless steel shims shall be placed as shown in Detail T if needed to compensate for alignment variations between horizontal and diagonal pipes beyond adjustment provided by angles. Thicker shims may be used subject to shims performing properly.
- If Handrail Joint present, weld angle to WF(A-N)4 and 1/4" extension bars. (See Base Sheet OSF-A-8.)
- L 1/8" x 1/2" x 2" welded to handrail posts to protect locations that contact grating.
- Tube to grating gap may vary from 0 to 1/2" max. to align walkway, allow for camber, etc.
- Cabinet manufacturer must design and supply hardware for connection of cabinet to WF6's. Bolts must be stainless steel or hot dip galvanized high strength per IDOT specifications.

Structure Number	Station	A	B	C	D
8F0601055L022.0	1148+74	7.5"	1' 8"	7'	9' 2"
8F0601070L016.8	1032+00	7.5"	1' 8"	7'	9' 2"

**BUTTERFLY SIGN STRUCTURES
 ALTERNATE WALKWAY DETAILS FOR DMS
 ALUMINUM TRUSS & STEEL POST**

FAI ROUTE 70/55
 DIST 8 ITS 2007-4a, 4b
 MADISON COUNTY

PLOT DATE = 5/2/2007
 FILE NAME = c:\p1\107\electrical\aspl\dl1497.dgn
 PLOT SCALE = 41.91988 / IN.
 USER NAME = prestonne