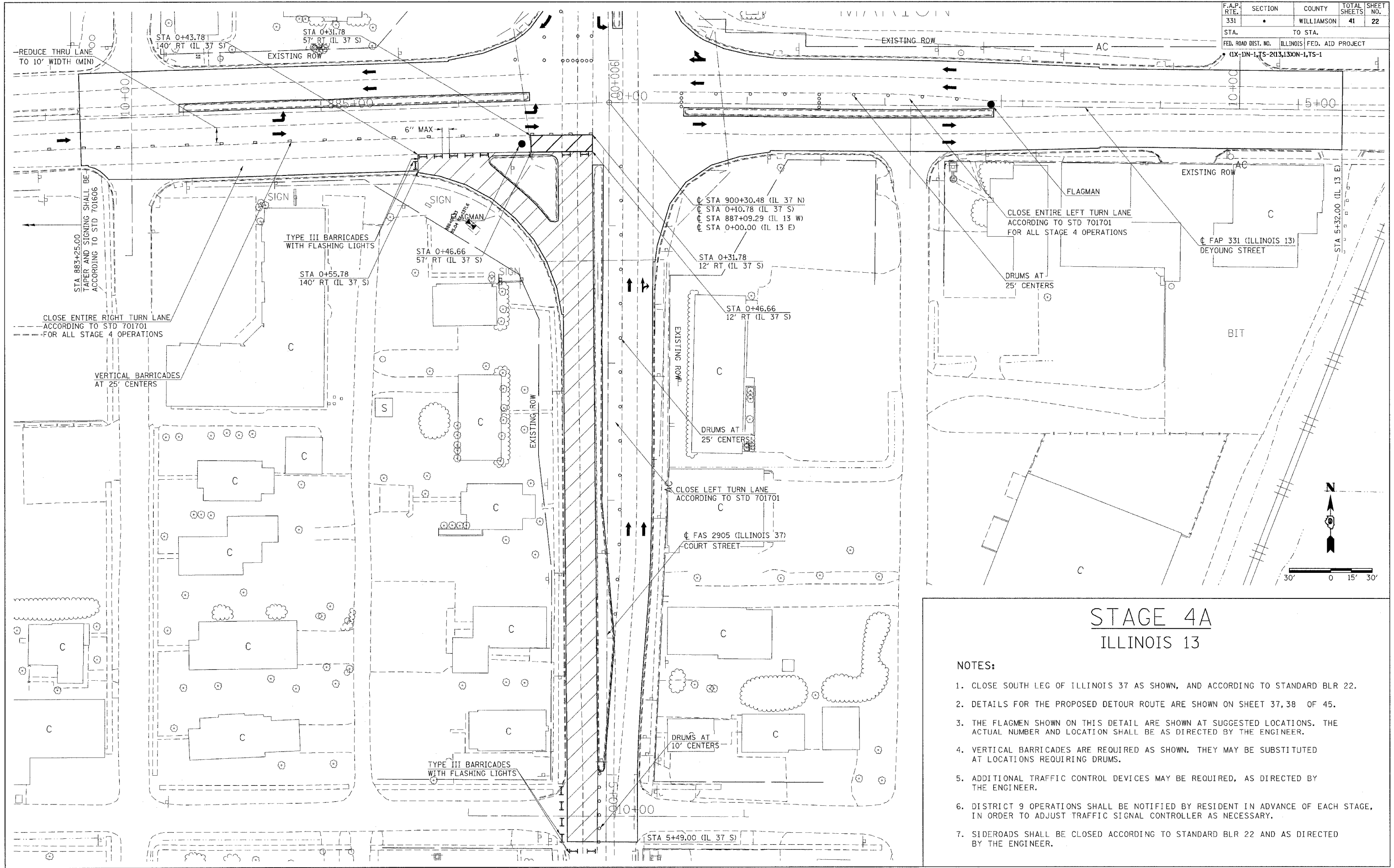


F.A.P. RTE.	SECTION	COUNTY	TOTAL SHEETS	SHEET NO.
331		WILLIAMSON	41	22
STA. TO STA.		ILLINOIS		
FED. ROAD DIST. NO.		ILLINOIS FED. AID PROJECT		
		(1X-1N-1,TS-2)(13,13XN-1,TS-1		



STAGE 4A ILLINOIS 13

NOTES:

1. CLOSE SOUTH LEG OF ILLINOIS 37 AS SHOWN, AND ACCORDING TO STANDARD BLR 22.
2. DETAILS FOR THE PROPOSED DETOUR ROUTE ARE SHOWN ON SHEET 37, 38 OF 45.
3. THE FLAGMEN SHOWN ON THIS DETAIL ARE SHOWN AT SUGGESTED LOCATIONS. THE ACTUAL NUMBER AND LOCATION SHALL BE AS DIRECTED BY THE ENGINEER.
4. VERTICAL BARRICADES ARE REQUIRED AS SHOWN. THEY MAY BE SUBSTITUTED AT LOCATIONS REQUIRING DRUMS.
5. ADDITIONAL TRAFFIC CONTROL DEVICES MAY BE REQUIRED, AS DIRECTED BY THE ENGINEER.
6. DISTRICT 9 OPERATIONS SHALL BE NOTIFIED BY RESIDENT IN ADVANCE OF EACH STAGE, IN ORDER TO ADJUST TRAFFIC SIGNAL CONTROLLER AS NECESSARY.
7. SIDEROADS SHALL BE CLOSED ACCORDING TO STANDARD BLR 22 AND AS DIRECTED BY THE ENGINEER.

5/2/2007
 cadpr\o\ecrs\g001807\staging\sheet4.dgn
 29.9599 / IN.
 rocewaddnd