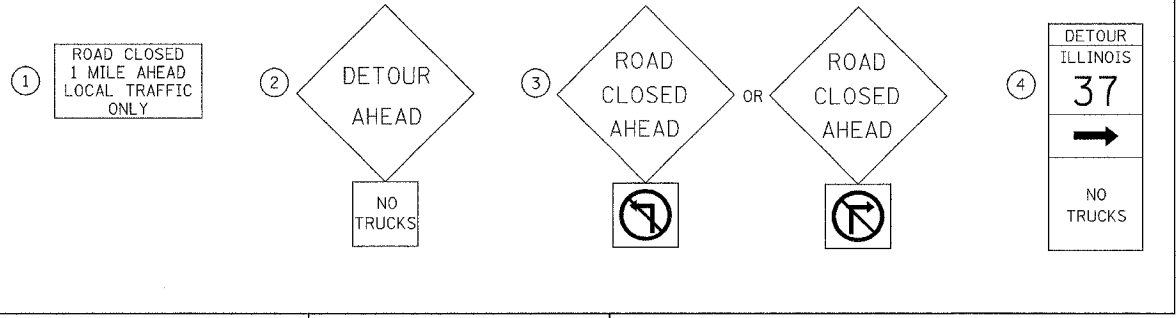


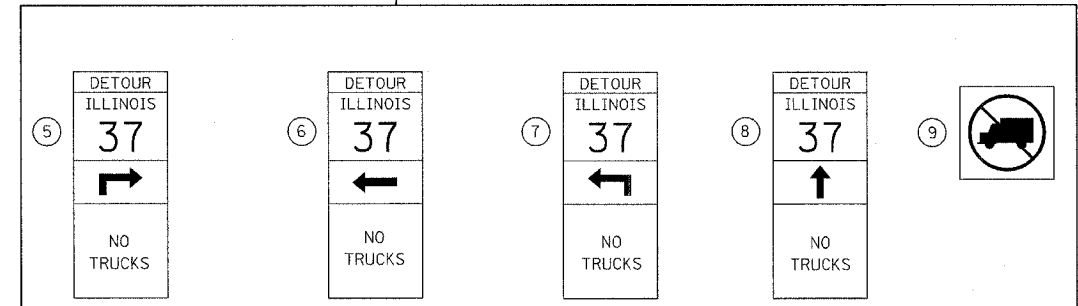
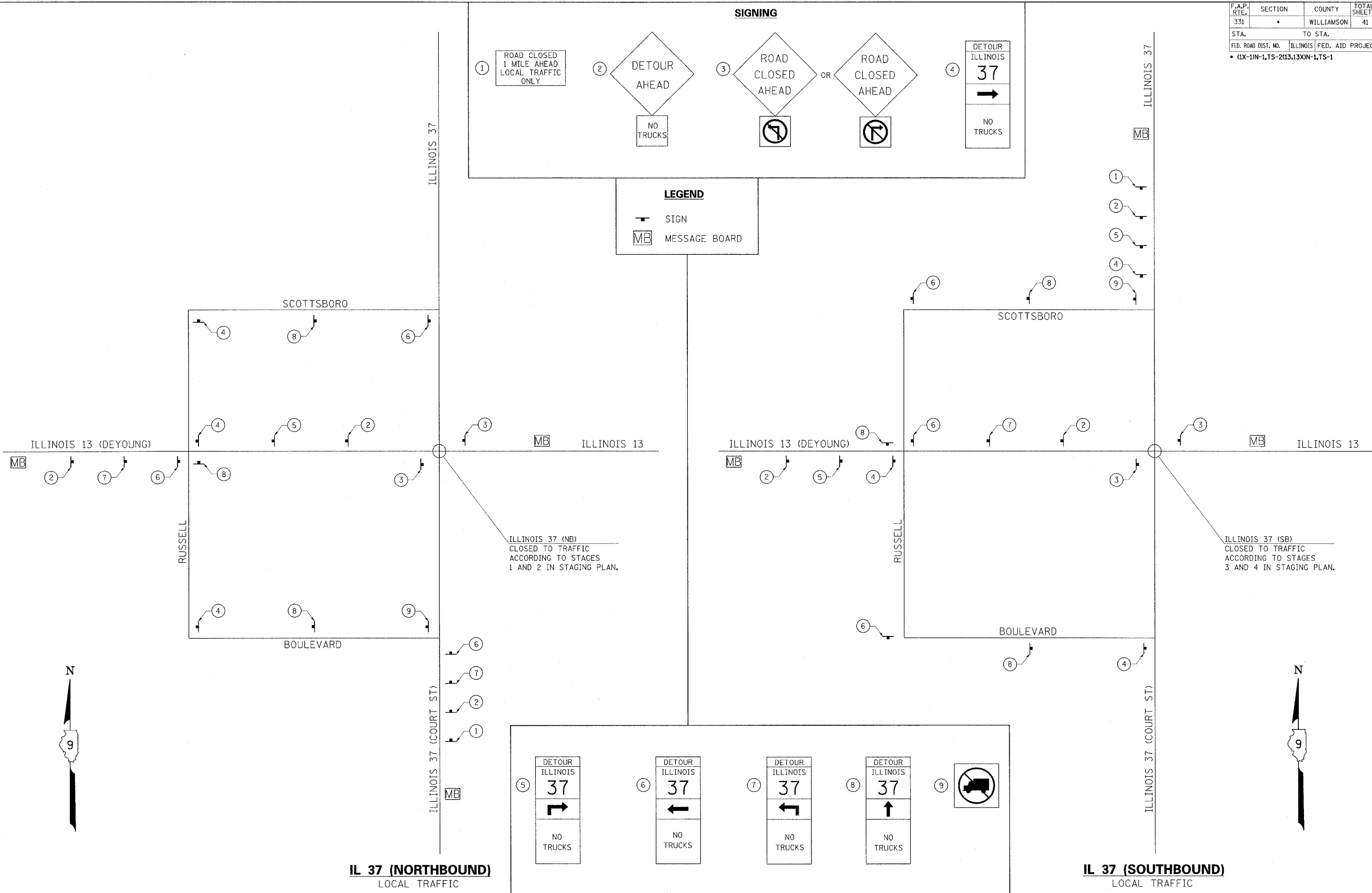
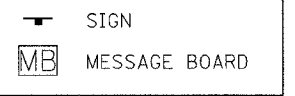
F.A.P. RTE.	SECTION	COUNTY	TOTAL SHEETS	SHEET NO.
331	*	WILLIAMSON	41	32

STA. TO STA.  
 FED. ROAD DIST. NO. ILLINOIS FED. AID PROJECT  
 \* 01X-1N-1, TS-2(13,13)XN-1, TS-1

**SIGNING**



**LEGEND**



**IL 37 (NORTHBOUND)**  
 LOCAL TRAFFIC

**IL 37 (SOUTHBOUND)**  
 LOCAL TRAFFIC

**LOCAL TRAFFIC DETOUR SIGNING**

5/2/2007  
 ca:\projects\0301807\staging\sheets.dgn  
 50,0000 / IN.  
 rodewaldm

