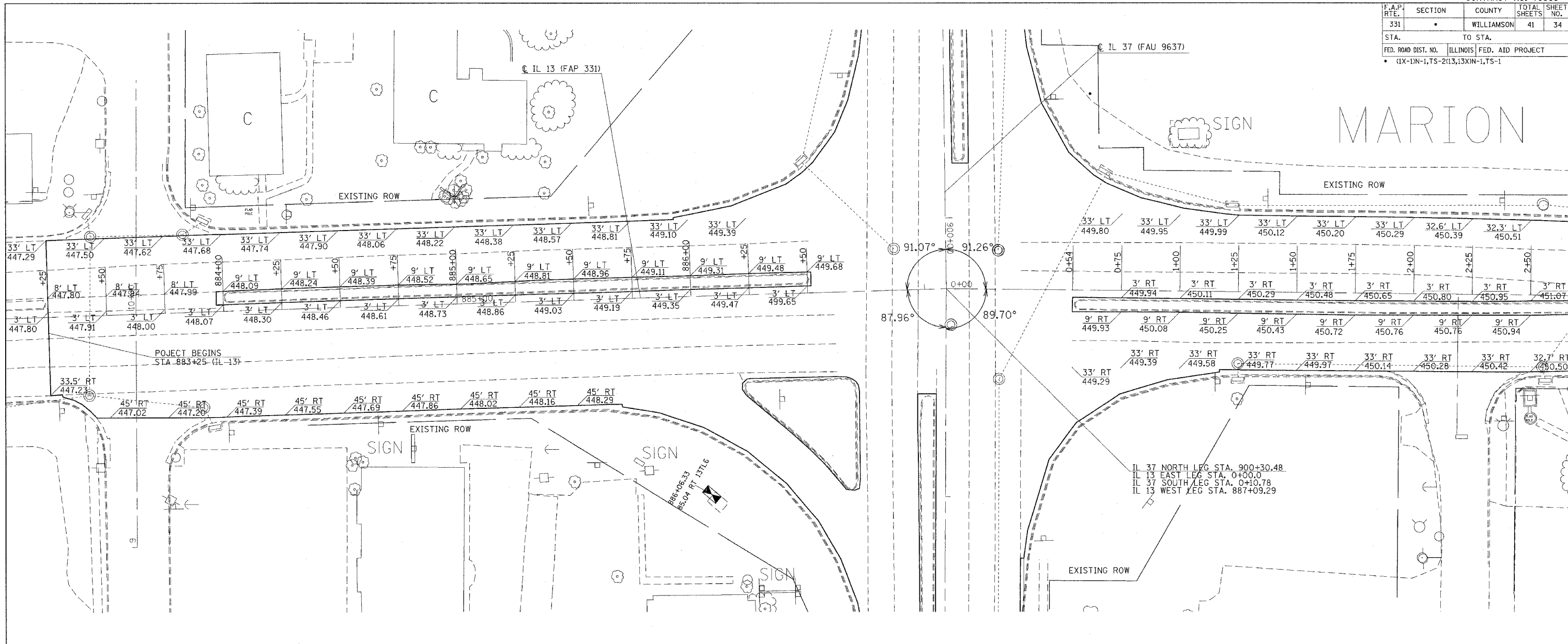


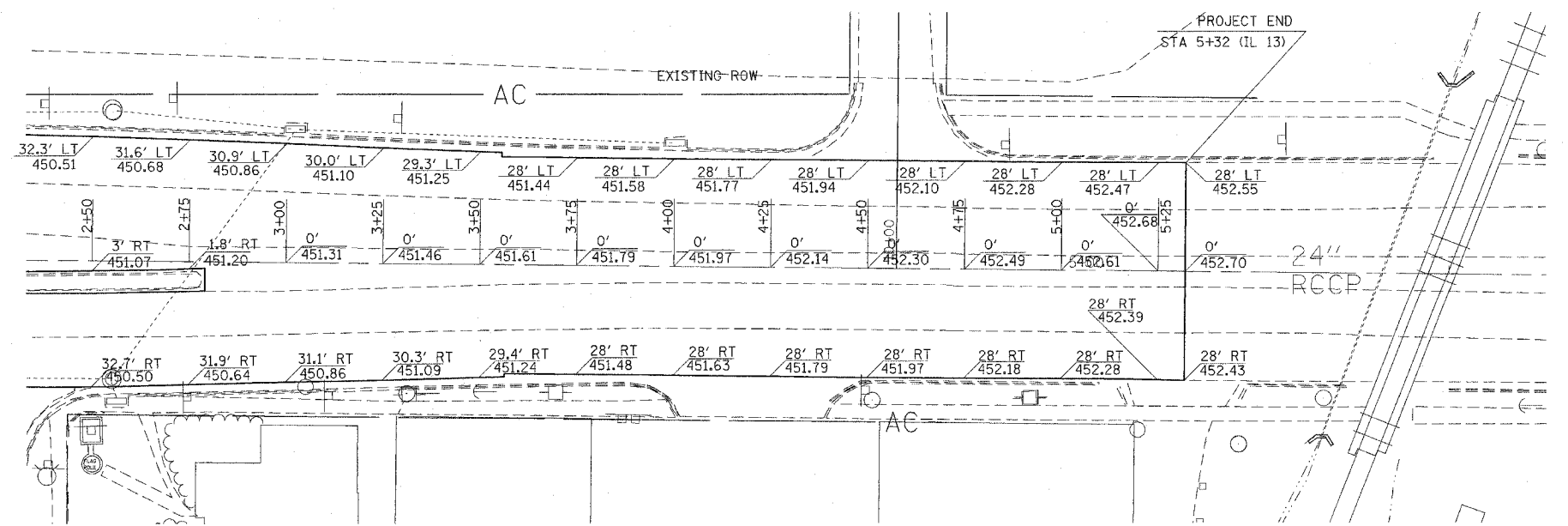
F.A.P. RTE.	SECTION	COUNTY	TOTAL SHEETS	SHEET NO.
331		WILLIAMSON	41	34
STA. 883+25		TO STA. 900+00		
FED. ROAD DIST. NO.		ILLINOIS	FED. AID PROJECT	
• (1X-1N-1, TS-2(13,13XN-1, TS-1				

MARION



IL 37 NORTH LEG STA. 900+30.48
 IL 13 EAST LEG STA. 0+00.0
 IL 37 SOUTH LEG STA. 0+10.78
 IL 13 WEST LEG STA. 887+09.29

BENCHMARK 50
 "X" ON EASTERN MOST FLANGE BOLT OF FIREPLUG
 @ NW CORNER OF IL 37 AND RAILROAD



NOTE:
 FINAL PAVEMENT ELEVATIONS AND SLOPES SHOULD MATCH EXISTING ELEVATION AND SLOPES. ELEVATION SHOULD BE VERIFIED IN THE FIELD - SLIGHT ADJUSTMENTS ARE ALLOWED

PLOT DATE = 5/2/2007
 FILE NAME = c:\projects\78005\78005.dwg
 PLOT SCALE = 1" = 20'
 USER = jrb