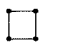
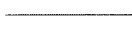

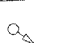
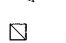




F.A.P. RTE	SECTION	COUNTY	TOTAL SHEETS	SHEET NO
331	*	WILLIAMSON	41	39
FED. ROAD DIST. NO. -		ILLINOIS	FED. AID PROJECT	
* (X-1N-1,TS-2(3,13)XN-1,TS-1				

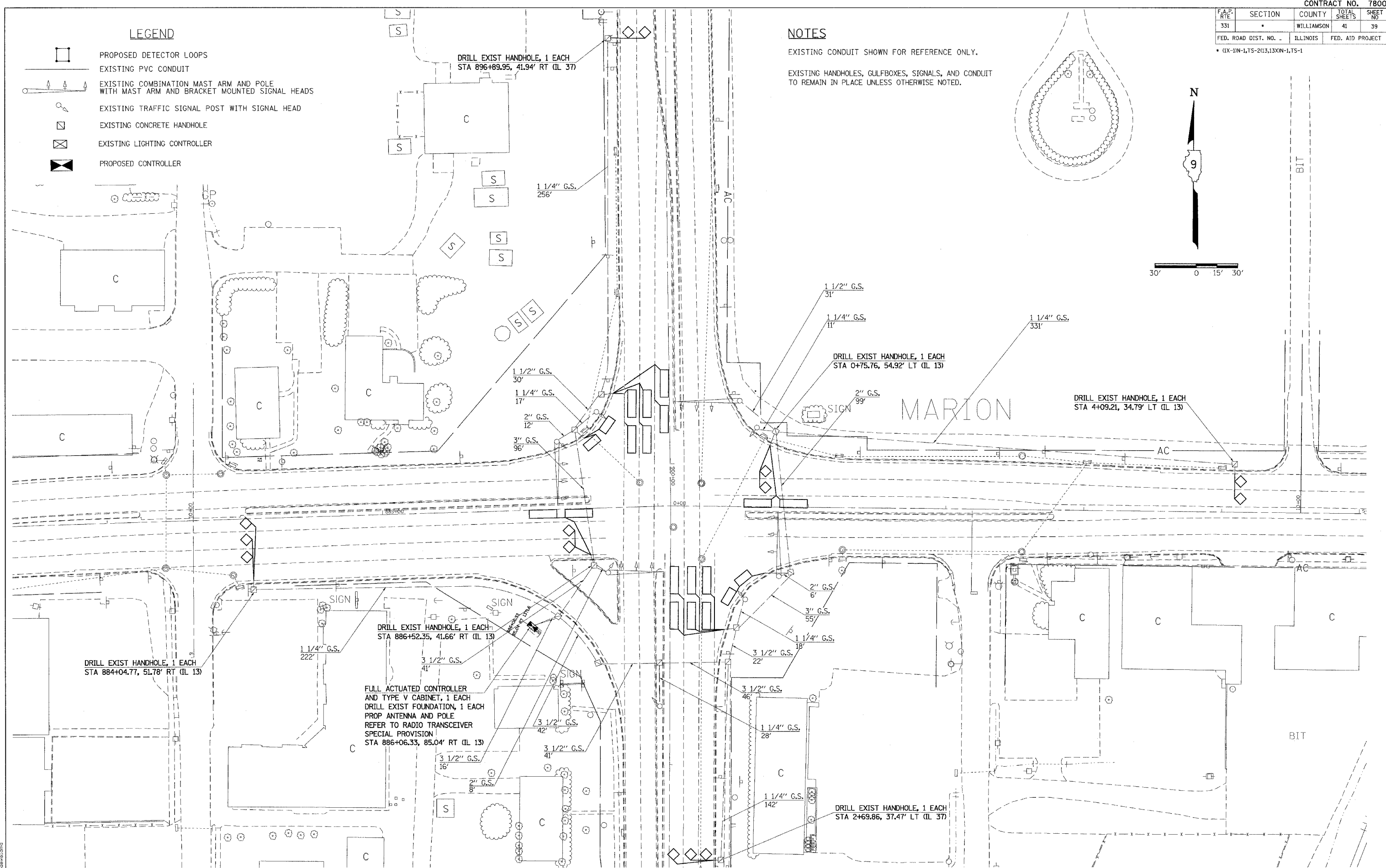
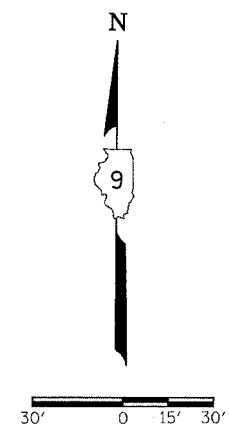
LEGEND

-  PROPOSED DETECTOR LOOPS
-  EXISTING PVC CONDUIT
-  EXISTING COMBINATION MAST ARM AND POLE WITH MAST ARM AND BRACKET MOUNTED SIGNAL HEADS
-  EXISTING TRAFFIC SIGNAL POST WITH SIGNAL HEAD
-  EXISTING CONCRETE HANDHOLE
-  EXISTING LIGHTING CONTROLLER
-  PROPOSED CONTROLLER

NOTES

EXISTING CONDUIT SHOWN FOR REFERENCE ONLY.

EXISTING HANDHOLES, GULFBXES, SIGNALS, AND CONDUIT TO REMAIN IN PLACE UNLESS OTHERWISE NOTED.



5/2/2007  
 S:\proj\pcta\4502\897\shrestha.dgn  
 11:41 AM  
 rshrestha

**PROPOSED TRAFFIC SIGNALS & LIGHTING**  
**ILLINOIS 13 & ILLINOIS 37**