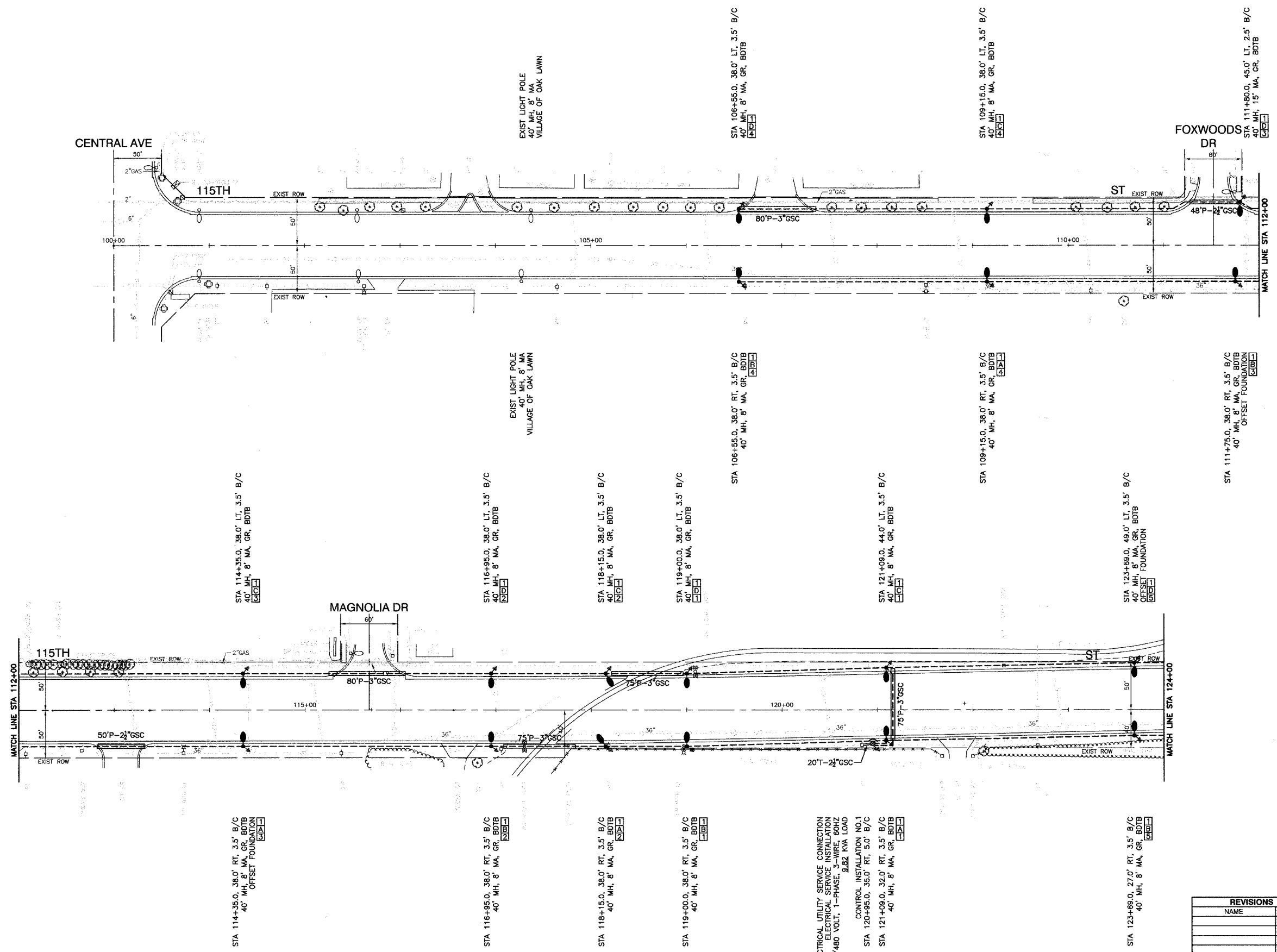


FAU. R/E	SECTION	COUNTY	TOTAL SHEETS	SHEET NO.
1583	02-00080-00-LT	COOK	10	3
FED. ROAD DIST. NO. 1	ILLINOIS	FED. AID PROJECT M-8003(540)		

CONTRACT #83924



**LEGEND :**

- ○ EXISTING STREET LIGHT
- ○ PROPOSED STREET LIGHT-310W HPS, 40' MOUNTING HEIGHT
- ○ PROPOSED STREET LIGHT-250W HPS, 40' MOUNTING HEIGHT
- ☒ CONTROLLER
- P — CONDUIT,PUSHED,GALVANIZED STEEL
- T — CONDUIT,TRENCHED,GALVANIZED STEEL
- UNIT DUCT,W/3-1/C,NO.4 AND 1/C NO.6 GROUND, 600V (EPR TYPE RHW) 1-1/4" DIAMETER POLYETHYLENE, BORED & PULLED
- ⓐ CIRCUIT
- ELECTRIC CABLE IN CONDUIT, 600V (EPR TYPE USE) 3-1/C NO.1/0
- GR GROUND ROD
- ▨ SIDEWALK REMOVAL & REPLACEMENT
- ▨ BITUMINOUS PARKWAY REMOVAL AND REPLACEMENT
- BDTB BREAKAWAY DEVICES, TRANSFORMER BASE
- COMED POWER POLE FOR SERVICE CONNECTION

REVISIONS	
NAME	DATE

MFT SECTION NO. 02-00080-00-LT

ILLINOIS DEPARTMENT OF TRANSPORTATION  
**F.A.U. ROUTE 1583  
 115TH STREET  
 STREET LIGHTING  
 PLAN SHEETS**

SCALE: VERT. NONE  
 HORIZ. 1"=50'  
 DATE 3-15-07  
 DRAWN BY RG  
 CHECKED BY PAP

ELECTRICAL UTILITY SERVICE CONNECTION  
 ELECTRICAL SERVICE INSTALLATION  
 240/480 VOLT, 1-PHASE, W/3 WIRE, 60HZ  
 3.32 KVA LOAD  
 CONTROL INSTALLATION NO.1  
 STA 120+95.0, 35.0' RT, 3.5' B/C  
 STA 121+09.0, 32.0' RT, 3.5' B/C  
 40' MH, 8' MA, GR, BDTB

STA 114+35.0, 38.0' RT, 3.5' B/C  
 40' MH, 8' MA, GR, BDTB  
 OFFSET FOUNDATION

STA 116+95.0, 38.0' RT, 3.5' B/C  
 40' MH, 8' MA, GR, BDTB

STA 118+15.0, 38.0' RT, 3.5' B/C  
 40' MH, 8' MA, GR, BDTB

STA 119+00.0, 38.0' RT, 3.5' B/C  
 40' MH, 8' MA, GR, BDTB

STA 123+69.0, 27.0' RT, 3.5' B/C  
 40' MH, 8' MA, GR, BDTB