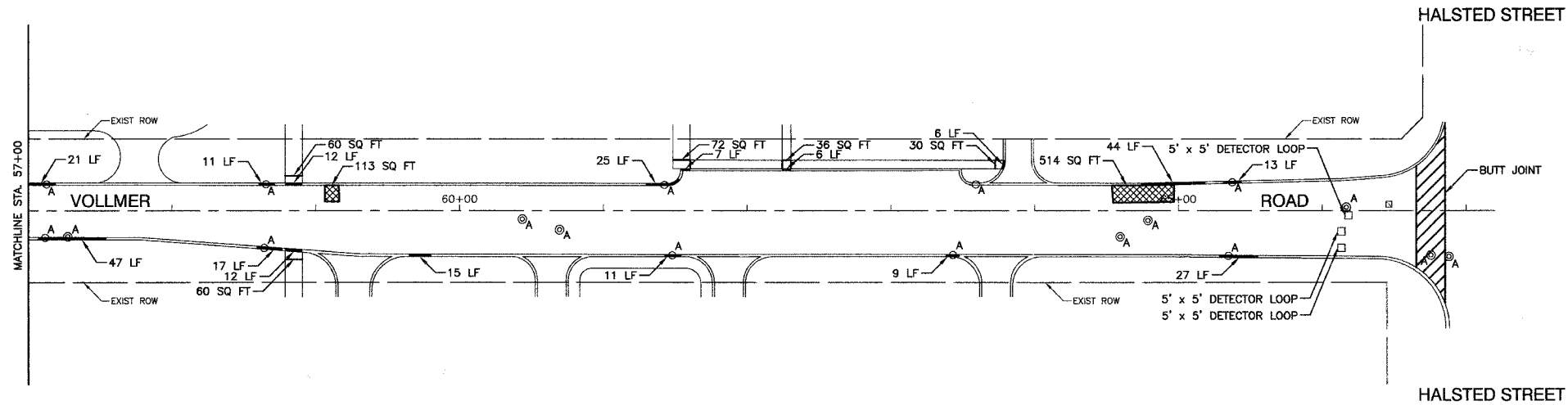


SECTION 8, TOWNSHIP 35, RANGE 14
SECTION 17, TOWNSHIP 35, RANGE 14

F. A. U. NO.	SECTION	COUNTY	TOTAL SHEETS	SHEET NO.
1629	07-00220-00-RS	COOK	20	06
STA. 57+00	TO STA. 66+85			
FED. ROAD DIST. NO.	CLASS.	FED. AID PROJECT		

CONTRACT #83934



NOTE:
LIMIT OF CONSTRUCTION ON ALL SIDE STREETS
IS THE RADIUS RETURN PLUS 10' BUTT JOINT

LEGEND

	BITUMINOUS PAVEMENT REPAIR
	CURB REMOVAL
	STRUCTURE TO BE ADJUSTED

REVISIONS	
NAME	DATE

ILLINOIS DEPARTMENT OF TRANSPORTATION

**VOLLMER ROAD
STREET RESURFACING
PLAN SHEET**

SCALE: VERT. NA
HORIZ. 1"=50'
DATE 02/09/07

DRAWN BY RG
CHECKED BY JMN