

STATE OF ILLINOIS  
DEPARTMENT OF TRANSPORTATION  
DIVISION OF HIGHWAYS

PLANS FOR PROPOSED  
FEDERAL AID HIGHWAY

OAK PARK AVENUE (F.A.U. ROUTE 2955)  
111TH STREET TO 107TH STREET  
LOCAL AGENCY PAVEMENT PRESERVATION  
STREET RESURFACING  
PROJECT: M8003(706)  
SECTION NO.: 05-00053-00-RS  
JOB NO.: C-91-052-07  
VILLAGE OF WORTH

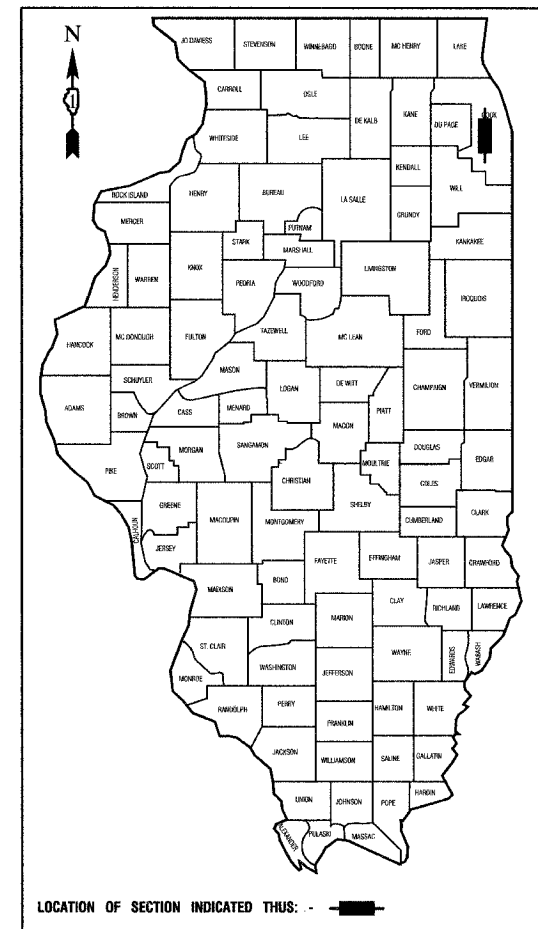
F. A. U. NO.	SECTION	COUNTY	TOTAL SHEETS	SHEET NO.
2955	05-00053-00-RS	COOK	011	001
STA.	TO STA.			
FED. ROAD DIST. NO.	ILLINOIS	FED. AID PROJECT		
CONTRACT #83947				

INDEX OF SHEETS

- COVER SHEET, INDEX OF SHEETS, LOCATION MAP INDEX OF STATE STANDARDS
- SUMMARY OF QUANTITIES & GENERAL NOTES
- TYPICAL CROSS SECTION AND CONSTRUCTION DETAIL
- PLAN VIEW
- 11. DETAILS

STATE STANDARDS

000001-04	STANDARD SYMBOLS, ABBREVIATIONS AND PATTERNS
424001-04	CURB RAMPS FOR SIDEWALKS
442201-02	CLASS C AND D PATCHES
606001-03	CONCRETE CURB & COMBINATION CONCRETE CURB & GUTTER
606006-01	OUTLET FOR CONCRETE CURB AND GUTTER, TYPE B-6.24
701311-02	LANE CLOSURE, 2L, 2W, MOVING OPERATIONS - DAY ONLY
701501-03	LANE CLOSURE, 2L, 2W, DAY OR NIGHT OPERATIONS, FOR SPEEDS < 45 MPH
701701-04	LANE CLOSURE, MULTILANE, INTERSECTION, FOR SPEEDS < 45 MPH
702001-06	TRAFFIC CONTROL DEVICES
780001-01	TYPICAL PAVEMENT MARKINGS
886001	DETECTOR LOOP INSTALLATIONS
886006	TYPICAL LAYOUTS FOR DETECTOR LOOPS

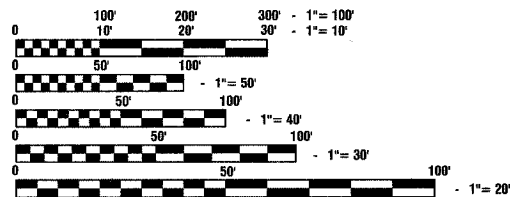


STATE OF ILLINOIS  
DEPARTMENT OF TRANSPORTATION  
DIVISION OF HIGHWAYS

APPROVED: 5/24/07  
*Edward S. Hengstler*  
VILLAGE PRESIDENT VILLAGE OF WORTH

PASSED: MAY 21 2007  
*Christopher Holt*  
REGION ONE ENGINEER OF LOCAL ROADS & STREETS

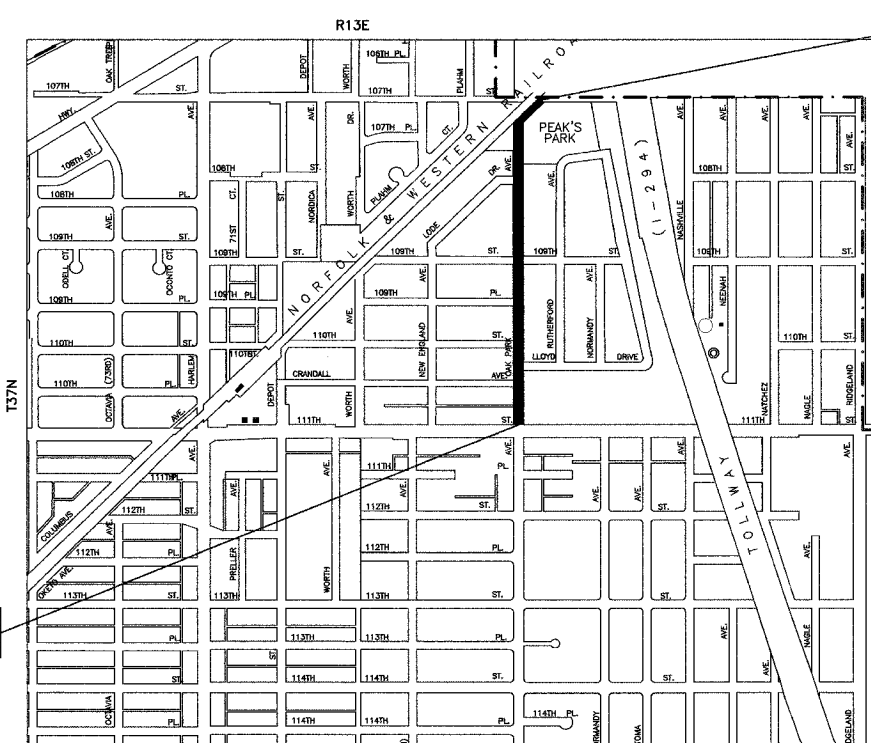
RELEASED FOR BID BASED ON LIMITED REVIEW: June 1 2007  
*Diane O'Keefe*  
DEPUTY DIRECTOR OF HIGHWAYS, REGION ONE ENGINEER



FULL SIZE PLANS HAVE BEEN PREPARED USING STANDARD ENGINEERING SCALES, REDUCED SIZED PLANS WILL NOT CONFORM TO STANDARD SCALES, IN MAKING MEASUREMENTS ON REDUCED PLANS, THE ABOVE SCALES MAY BE USED.

J. U. L. I. E.  
JOINT UTILITY LOCATION INFORMATION FOR EXCAVATION  
1-800-892-0123

CONTRACT NO. 83947



END PROJECT STA 37+20



TRAFFIC DATA  
2007 ADT = 2000  
SPEED LIMIT = 30 MPH  
COLLECTOR

PROJECT LOCATION

GROSS LENGTH = 2690 FEET = 0.51 MILES  
NET LENGTH = 2690 FEET = 0.51 MILES

I.D.O.T. FEDERAL AID DESIGN ENGINEER: JESSICA FELICIANO 847-705-4487  
CONSULTANTS: ROBINSON ENGINEERING, LTD. 708-331-6700

PRINTED BY THE AUTHORITY OF  
THE STATE OF ILLINOIS

PREPARED BY OR UNDER THE  
DIRECT SUPERVISION OF:

*Courtney M. Koning*  
5/24/07

