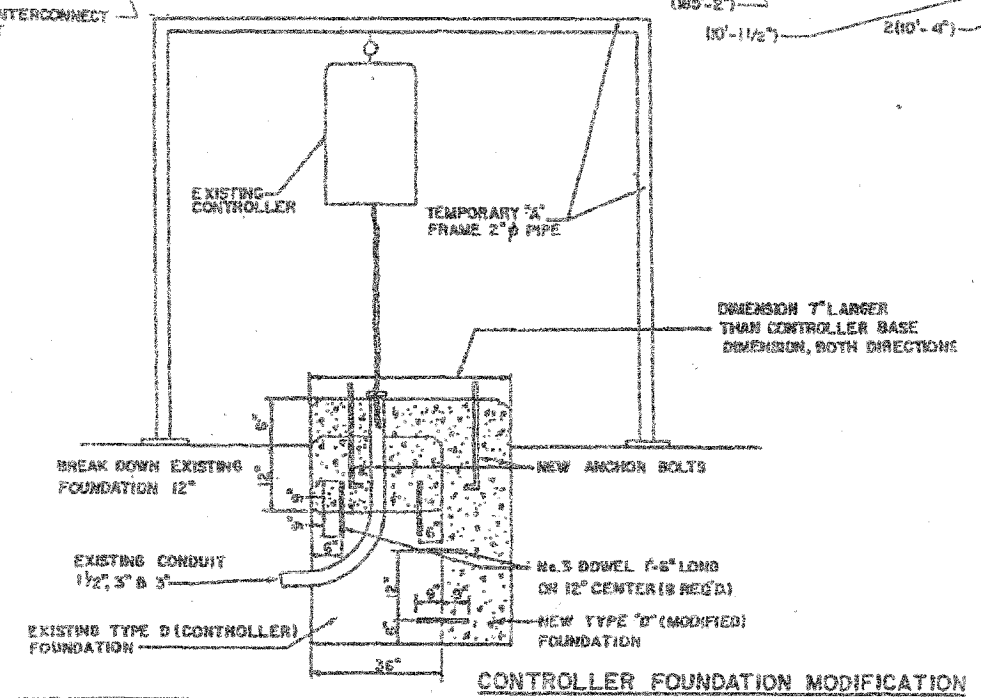
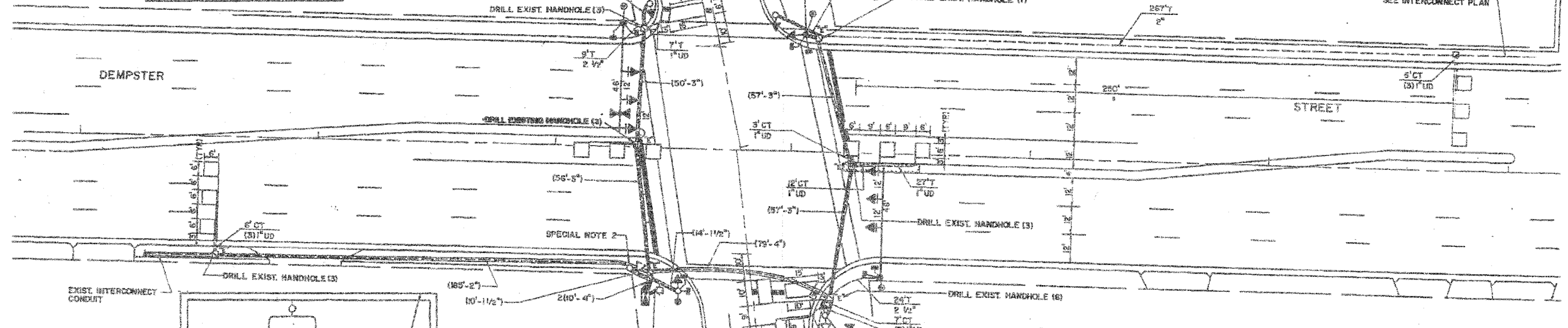
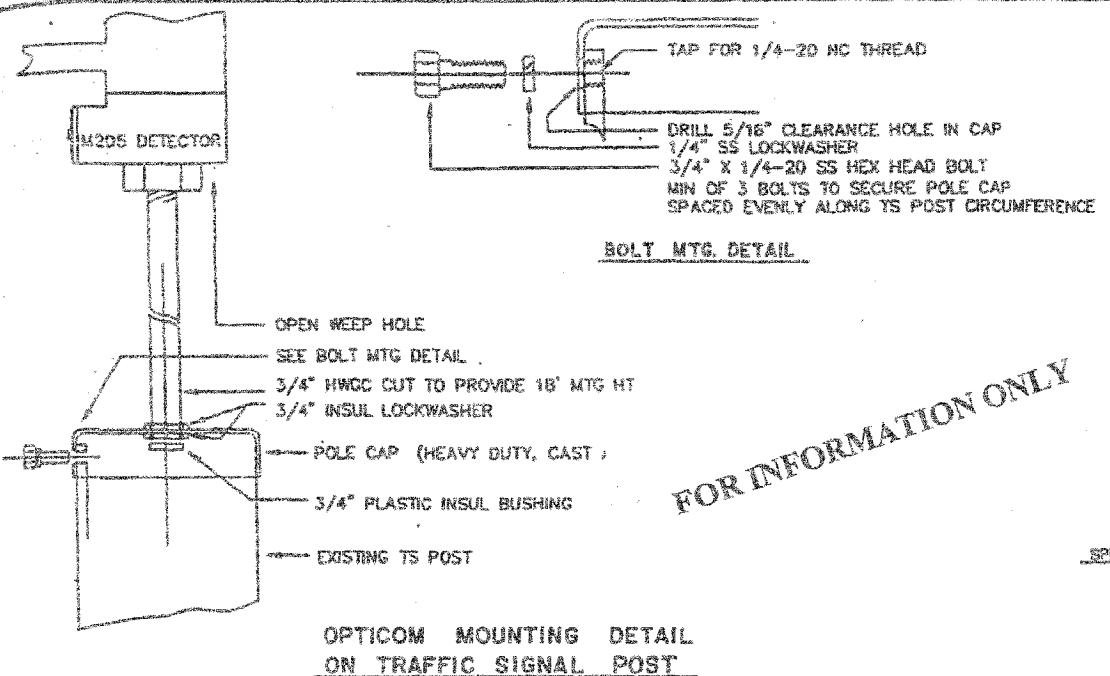


**TRAFFIC SIGNAL LEGEND**

- | PROPOSED | EXISTING |
|----------|----------|
|          |          |
|          |          |
|          |          |
|          |          |
|          |          |
|          |          |
|          |          |
|          |          |
|          |          |
|          |          |
|          |          |
|          |          |
|          |          |
|          |          |
|          |          |
|          |          |
|          |          |
|          |          |
|          |          |
|          |          |
|          |          |
|          |          |
|          |          |

- REMOVAL NOTES**
- PULL OUT ALL CABLES NOT USED FOR NEW SIGNAL HEADS AND INTERCONNECT CABLE.
  - REMOVE FOUNDATIONS FOR EAST AND WESTBOUND EAST ARM POLES.

**FOR INFORMATION ONLY**



**NOTES**

THE FOLLOWING EXISTING TRAFFIC SIGNAL EQUIPMENT SHALL BE REMOVED BY THE CONTRACTOR, SHALL REMAIN THE PROPERTY OF THE STATE, AND SHALL BE STORED AS STATED IN THE SPECIAL PROVISION FOR PICK UP BY STATE FORCES AS DESIGNATED BY THE ENGINEER.

- CONTROLLER AND CABINET COMPLETE
- AMPLIFIERS

THE FOLLOWING ITEMS SHALL BE REMOVED BY THE CONTRACTOR AND DISPOSED OF BY HIM AT HIS EXPENSE. THE SALVAGE VALUE OF THE REMOVED EQUIPMENT SHALL BE REFLECTED IN THE CONTRACT BID PRICE.

- MAST ARM ASSEMBLIES AND POLES
- SIGNAL HEADS

**SPECIAL NOTE 1**

THE EXISTING TWO FACE SIGNAL HEAD WITH 12\"/>

**SPECIAL NOTE 2**

THE EXISTING TWO FACE SIGNAL HEAD WITH 1-3 SECTION AND 1-5 SECTION SHALL BE REBUILT TO 1-FACE, 5-SECTION SIGNAL HEAD AND MOUNTED AS SHOWN ON THE PLANS TO PROVIDE A FAR LEFT SIGNAL INDICATION.

**SPECIAL NOTE 3**

THE EXISTING SIGNAL HEAD AND SIGNAL POST SHALL BE REMOVED AND THE NEW 6\"/>

REVISIONS	
NAME	DATE

ILLINOIS DEPARTMENT OF TRANSPORTATION

**TRAFFIC SIGNAL INSTALLATION**  
**DEMPSTER STREET (U.S.14)**  
**AT SHERMER ROAD**

SCALE: 1" = 20'  
 DATE: NOV. 17, 1990  
 DRAWN BY: EEE/JSB  
 CHECKED BY: PFG/AGP