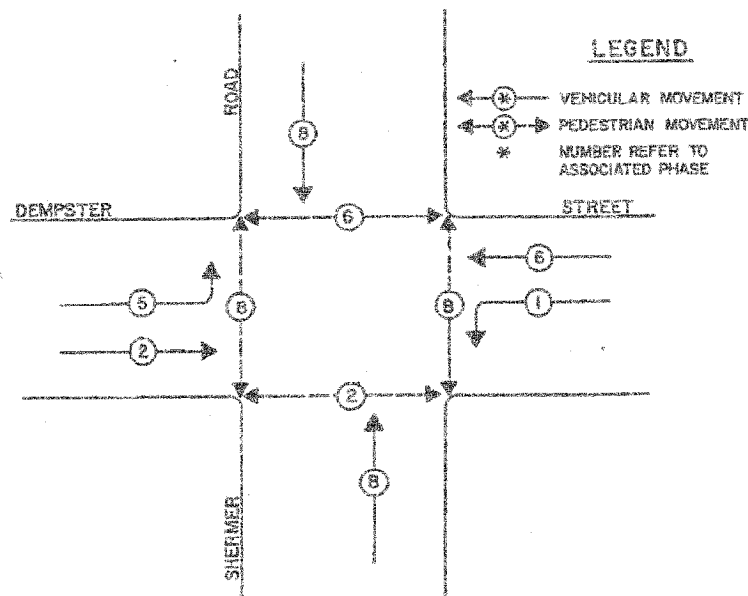


CONTROLLER SEQUENCE IV

REFERRING TO STANDARD 2393-1, THE VEHICULAR AND PEDESTRIAN PHASES USED ARE DESIGNATED BELOW.



PHASE DESIGNATION DIAGRAM

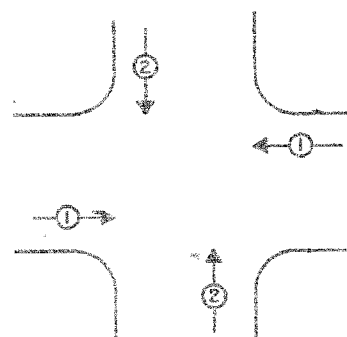
SCHEDULE OF QUANTITIES

QUANTITY	UNIT	ITEM
15.5	SQ FT	SIGN PANEL - TYPE I
2	EACH	SIGNAL HEAD, 1-FACE, 2-SECTION, BRACKET MOUNTED
4	EACH	SIGNAL HEAD, 1-FACE, 3-SECTION, MAST ARM MOUNTED
1	EACH	SIGNAL HEAD, 1-FACE, 5-SECTION, BRACKET MOUNTED
2	EACH	SIGNAL HEAD, 1-FACE, 5-SECTION, MAST ARM MOUNTED
4	EACH	PEDESTRIAN SIGNAL HEAD, 3-FACE, BRACKET MOUNTED
6	EACH	TRAFFIC SIGNAL BACKPLATE, LOUVERED
1	EACH	TRAFFIC SIGNAL POST, GALVANIZED STEEL 15 FT.
1	EACH	STEEL MAST ARM ASSEMBLY AND POLE, 48 FT.
1	EACH	STEEL MAST ARM ASSEMBLY AND POLE, 48 FT.
1	EACH	FULL-ACTUATED CONTROLLER, STANDARD SEQUENCE, 8 PHASES, IN TYPE IV CABINET
1	EACH	TRANSCEIVER
7	EACH	INDUCTION LOOP DETECTOR AMPLIFIER
696	LIN FT	DETECTOR LOOP, TYPE I
4	EACH	PEDESTRIAN PUSHBUTTON
267	LIN FT	GALVANIZED STEEL CONDUIT IN TRENCH 2"
33	LIN FT	GALVANIZED STEEL CONDUIT IN TRENCH 1 1/2"
167	LIN FT	UNIT DUCT, WITHOUT CABLE, IN TRENCH 1"
567	LIN FT	ELECTRIC CABLE IN CONDUIT NO. 14 2/C
1134	LIN FT	ELECTRIC CABLE IN CONDUIT NO. 14 3/C
580	LIN FT	ELECTRIC CABLE IN CONDUIT NO. 14 5/C
618	LIN FT	ELECTRIC CABLE IN CONDUIT NO. 14 7/C
1334	LIN FT	ELECTRIC CABLE IN CONDUIT NO. 14 2/C TWISTED, SHIELDED
30	LIN FT	CONCRETE FOUNDATION, TYPE K 36-INCH DIAMETER
1	EACH	CONCRETE HANDHOLE
421	LIN FT	TRENCH AND BACKFILL
3	EACH	REBUILD EXISTING SIGNAL HEAD
1	EACH	REMOVE EXISTING TRAFFIC SIGNAL EQUIPMENT
2	EACH	REMOVE EXISTING CONCRETE FOUNDATION
1516	LIN FT	PULL ELECTRIC CABLE FROM CONDUIT
1	EACH	MAINTENANCE OF EXISTING TRAFFIC SIGNAL INSTALLATION
1	EACH	PAINT EXISTING TRAFFIC SIGNAL EQUIPMENT
19	EACH	DRILL EXISTING HANDHOLE
2	EACH	LIGHT DETECTOR
1	EACH	LIGHT DETECTOR AMPLIFIER
304	LIN FT	EMERGENCY VEHICLE PRIORITY SYSTEM LEAD-IN CABLE IN CONDUIT
1	EACH	MODIFY EXISTING TYPE "D" FOUNDATION
10	LIN FT	COMBINATION CONCRETE CURB AND GUTTER REMOVAL AND REPLACEMENT
120	SQ FT	MEDIAN REMOVAL AND REPLACEMENT
50	SQ FT	SIDEWALK REMOVAL AND REPLACEMENT

NOTES:

1. TERMINATION OF PHASE 1+6 SHALL BE WITH A YELLOW ARROW DISPLAYED TOGETHER WITH A CIRCULAR RED.
2. TERMINATION OF PHASES 1 OR 5 ALONE IN PHASE 1+6 OR 2+6 SHALL BE WITH A YELLOW ARROW DISPLAYED TOGETHER WITH A CIRCULAR GREEN.
3. TERMINATION OF PHASES 2+8 OR 8 SHALL BE WITH A CIRCULAR YELLOW WHEN FOLLOWED BY A PRIORITY LANE INTERVAL WHICH DISPLAYS A CIRCULAR RED.
4. TERMINATION OF PHASES 2+6 OR 8 SHALL BE WITH A CIRCULAR YELLOW WHEN FOLLOWED BY A PRIORITY LANE INTERVAL WHICH DISPLAYS A CIRCULAR RED. WHEN PHASES 2+6 OR 8 CIRCULAR GREEN IS TO BE DISPLAYED IN THE PRIORITY LANE INTERVAL, IT SHALL REMAIN GREEN.
5. TERMINATION OF ALL PEDESTRIAN INTERVALS SHALL INCLUDE A FULL FLASHING "DON'T WALK" CLEARANCE INTERVAL.
6. TERMINATION OF ALL PRIORITY INTERVALS SHALL BE WITH A CIRCULAR YELLOW EXCEPT WHEN THE GREEN DISPLAYED DURING THE PRIORITY INTERVAL IS TO REMAIN GREEN WHEN THE NORMAL SEQUENCE OF OPERATING RESUMES CONTROL OF THE INTERSECTION.
7. IF ALL RED CLEARANCE IS USED IN THE NORMAL SEQUENCE OF OPERATIONS, IT MUST BE DISPLAYED AFTER THE YELLOW CLEARANCE INTERVAL WHEN ENTERING OR LEAVING THE PRIORITY SEQUENCE.

PRIORITY SEQUENCE FOR CONTROLLER SEQUENCE IV



PROPOSED PRIORITY LANES		
PRIORITY LANE INTERVAL	1	2
MOVEMENT	← →	↓ ↑

ROUTE	SECTION	COUNTY	DATE	NO.
1524	#	COOK	85	38
DATE:	TO STA.	26	16	

Contract No: 83953

CABLE PLAN LEGEND

- 8" TRAFFIC SIGNAL SECTION
- 12" TRAFFIC SIGNAL SECTION
- 12" PEDESTRIAN SIGNAL SECTION
- CONTROLLER CABINET
- SERVICE INSTALLATION (EXISTING)
- VEHICLE DETECTOR, INDUCTION LOOP
- PUSHBUTTON DETECTOR
- DENOTES NUMBER OF CONDUCTORS (NEW)
- ALL LOOP DETECTOR CABLE TO BE SHIELDED
- ALL CABLE NO. 14 EXCEPT AS INDICATED.
- INDICATES EXISTING CABLE
- SIGNAL FACE WITH BACKPLATE
- "P" INDICATES OPTICAL PROGRAMMING
- EXISTING SIGNAL SECTION
- MAGNETIC DETECTOR
- OPTICAL DETECTOR

FOR INFORMATION ONLY

- PUSHBUTTON NOTES**
1. PUSHBUTTONS 'A' & 'D' SHALL PLACE A CALL IN PHASES 2 AND 8.
 2. PUSHBUTTONS 'B' & 'C' SHALL PLACE A CALL IN PHASES 6 AND 8.

REVISIONS	
NAME	DATE

DEPARTMENT OF TRANSPORTATION

CABLE DIAGRAM

SCHEDULE OF QUANTITIES

DEMPSTER STREET (U.S. 14)

AT SHERMER ROAD

SCALE: NONE DRAWN BY: EEE/MB

DATE: NOV 20, 1990 CHECKED BY: PKG