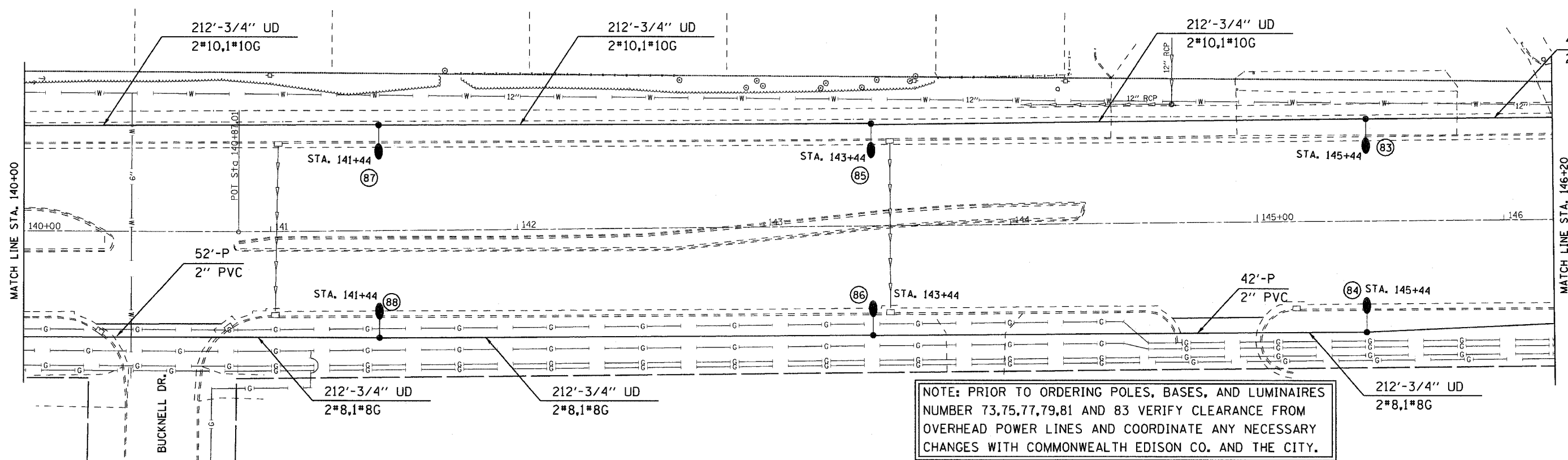
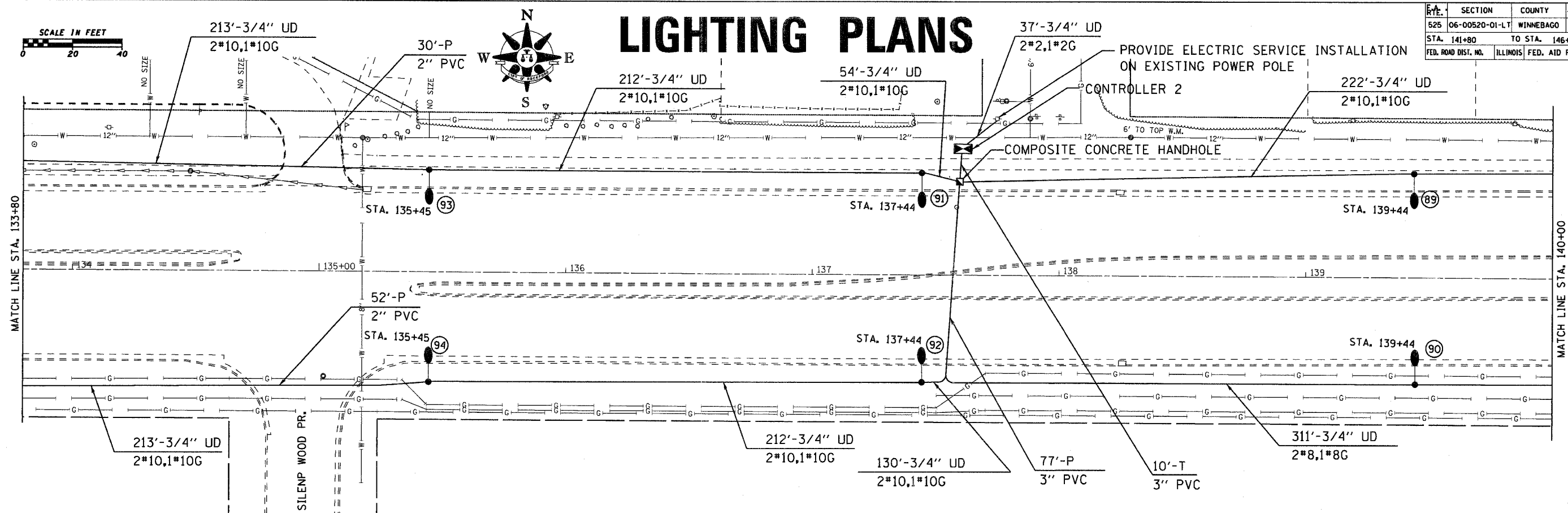
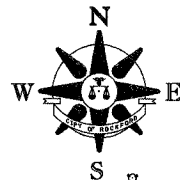


F.A. RYE.	SECTION	COUNTY	TOTAL SHEETS	SHEET NO.
525	06-00520-01-LT	WINNEBAGO	41	11
STA. 141+80		TO STA. 146+20		
FED. ROAD DIST. NO.		ILLINOIS FED. AID PROJECT		

LIGHTING PLANS



NOTE: PRIOR TO ORDERING POLES, BASES, AND LUMINAIRES NUMBER 73,75,77,79,81 AND 83 VERIFY CLEARANCE FROM OVERHEAD POWER LINES AND COORDINATE ANY NECESSARY CHANGES WITH COMMONWEALTH EDISON CO. AND THE CITY.