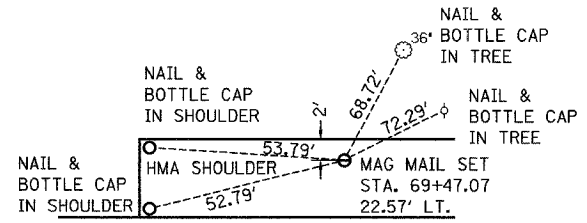
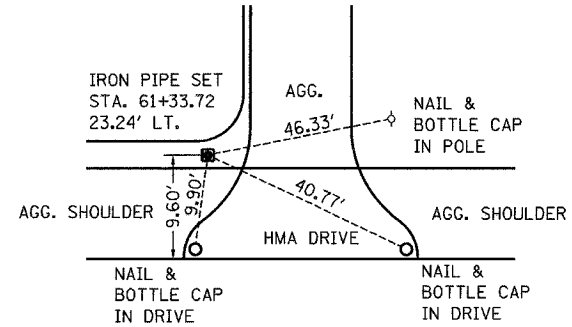
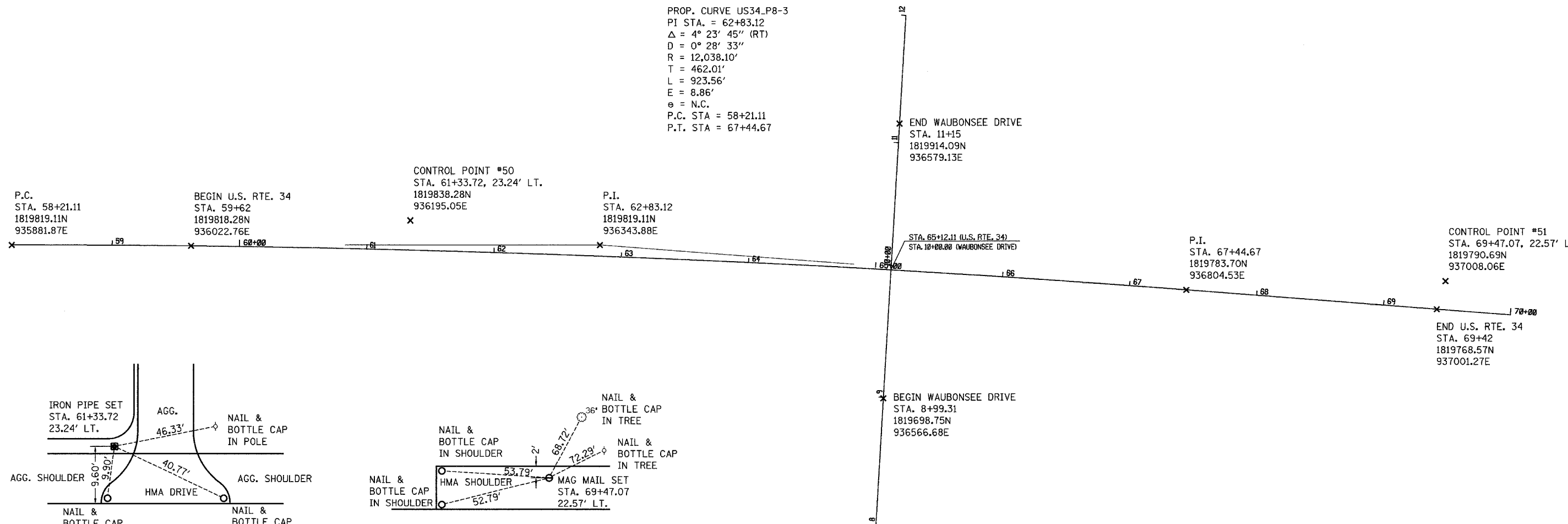


F.A.P. RTE.	SECTION	COUNTY	TOTAL SHEETS	SHEET NO.
591	06-00034-00-RP	KENDALL	37	8
STA.		TO STA.		
FED. ROAD DIST. NO. ILLINOIS		FED. AID PROJECT		



BM *268
 RAILROAD SPIKE IN POWER POLE
 NORTH SIDE OF U.S. 34
 STA. 55+70, 47.5' LT.
 ELEV. = 652.46

BM *267
 RAILROAD SPIKE IN POWER POLE
 NORTH SIDE OF U.S. 34
 STA. 59+72, 51' LT.
 ELEV. = 648.26

BM *266
 RAILROAD SPIKE IN POWER POLE
 NORTH SIDE OF U.S. 34
 STA. 64+58, 50' LT.
 ELEV. = 650.25

BM *265
 RAILROAD SPIKE IN POWER POLE
 NORTH SIDE OF U.S. 34
 STA. 70+16, 43' LT.
 ELEV. = 647.01

REVISIONS	
NAME	DATE

ILLINOIS DEPARTMENT OF TRANSPORTATION
 ALIGNMENT AND TIES
 FAP 591 (US 34)
 AND WAUBONSEE DRIVE
 SECTION 06-00034-00-RP
 KENDALL COUNTY

SCALE: VERT. _____
 HORIZ. _____
 DATE: 02/07
 DRAWN BY: NOE/NV
 CHECKED BY: DJD

PLOT DATE = #DATE#
 FILE NAME = #FILE#
 PLOT SCALE = #SCALE#
 USER NAME = #USER#