

|                     |         |                           |              |           |
|---------------------|---------|---------------------------|--------------|-----------|
| F.A.P. RTE.         | SECTION | COUNTY                    | TOTAL SHEETS | SHEET NO. |
| *                   | **      | KENDALL                   | 37           | 22        |
| STA.                |         | TO STA.                   |              |           |
| FED. ROAD DIST. NO. |         | ILLINOIS FED. AID PROJECT |              |           |
| * FAP 591 (US 34)   |         | ** SECTION 06-00034-00-RP |              |           |

### DETECTOR LOOP INDUCTANCE CHART

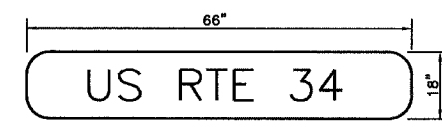
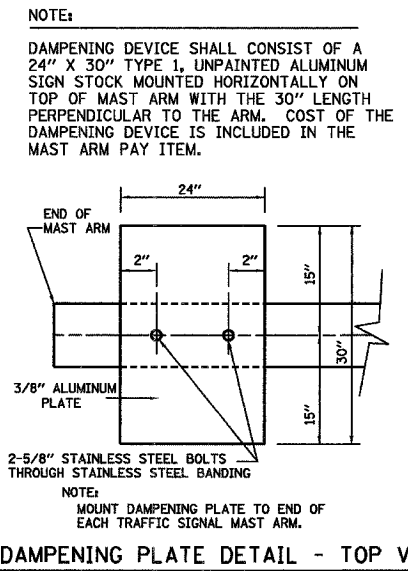
| DETECTOR LOOP SYSTEM | Ø | LOCATION | TURNS PER LOOP | INDUCTANCE READING (MICROHENRIES) | FREQUENCY (HERTZ) | J PIN STATUS |
|----------------------|---|----------|----------------|-----------------------------------|-------------------|--------------|
| A                    | 4 | SB STBR  | 4              | 724                               | 22689             | ON           |
| B                    | 7 | SB LT    | 4              | 726                               | 22648             | ON           |
| C                    | 6 | WB FAR   | 6              | 380                               | 31298             | ON           |
| D                    | 6 | WB STBR  | 4              | 299                               | 35300             | OFF          |
| E                    | 8 | NB STBR  | 4              | 793                               | 21671             | ON           |
| F                    | 3 | NB LT    | 4              | 795                               | 21653             | ON           |
| G                    | 2 | EB FAR   | 6              | 388                               | 30986             | ON           |
| H                    | 2 | EB STBR  | 4              | 305                               | 34967             | OFF          |
| I                    | 5 | EB LT    | 4              | 829                               | 21200             | ON           |

J PIN STATUS: "ON" MEANS STANDARD DETECTOR SETUP. "OFF" MEANS J WIRE HAS BEEN DISCONNECTED. BUT INTACT, AT THE HARNESS PANEL WITH THE NECESSARY

### ELECTRICAL LOAD FOR INTERSECTION

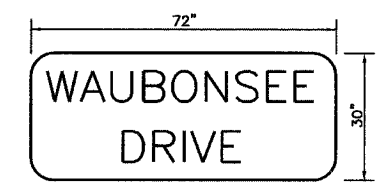
| STREET NAME            | COMPONENT         | NUMBER | WATTAGE EACH | BURNTIME % |
|------------------------|-------------------|--------|--------------|------------|
| US RTE 34              | RED               | 5      | 10           | 54         |
|                        | YELLOW            | 5      | 19           | 4          |
|                        | GREEN             | 5      | 14           | 42         |
|                        | YELLOW ARROW LT.  | 2      | 9            | 5          |
|                        | GREEN ARROW LT.   | 2      | 3.4          | 21         |
| WAUBONSEE DRIVE        | RED               | 6      | 10           | 70         |
|                        | YELLOW            | 6      | 19           | 4          |
|                        | GREEN             | 6      | 14           | 26         |
|                        | YELLOW ARROW LT.  | 4      | 9            | 4          |
|                        | GREEN ARROW LT.   | 4      | 3.4          | 16         |
|                        |                   |        | 4            | 7          |
| TRAFFIC SIGNAL CABINET | CONTROLLER        | 1      | 6            | 100        |
|                        | VEHICLE DETECTORS | 9      | 4            | 100        |
|                        | UPS               | 1      | 50           | 100        |
| HIGHWAY LIGHTING       | LUMINAIRE HPS     | 4      | 400          | 50         |

AGENCY RESPONSIBLE FOR TRAFFIC SIGNAL ENERGY CHARGES:  
 UNITED CITY OF PLANO  
 (NOTE: SEPERATE ENERGY BILLS FOR HIGHWAY LIGHTING AND TRAFFIC SIGNALS SHALL BE SUBMITTED TO THE UNITED CITY OF PLANO.)  
 7 NORTH JAMES STREET  
 PLANO, ILLINOIS 60545  
 708-552-8275



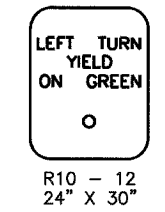
TYPE A SHEETING REQUIRED  
 8" D SERIES LETTERS  
 2 SIGN REQUIRED = 8.25 SQ. FT. EACH  
 = 16.50 SQ. FT. TOTAL

THIS STREET NAME SIGN SHALL BE PLACED ON THE MAST ARMS PARALLEL WITH US ROUTE 34



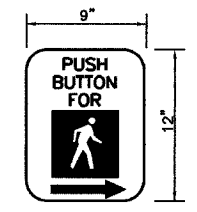
TYPE A SHEETING REQUIRED  
 8" D SERIES LETTERS  
 2 SIGNS REQUIRED = 15.0 SQ. FT. EACH  
 = 30.0 SQ. FT. TOTAL

THIS STREET NAME SIGN SHALL BE PLACED ON THE MAST ARMS PARALLEL WITH WAUBONSEE DRIVE

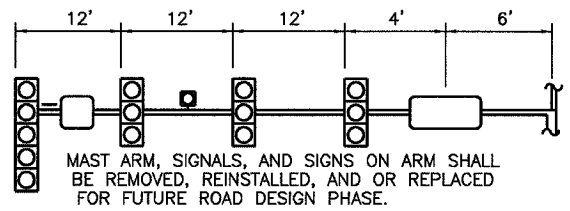


TYPE A SHEETING REQUIRED  
 4 SIGNS REQUIRED = 5 SQ.FT. EACH  
 = 20 SQ.FT. TOTAL

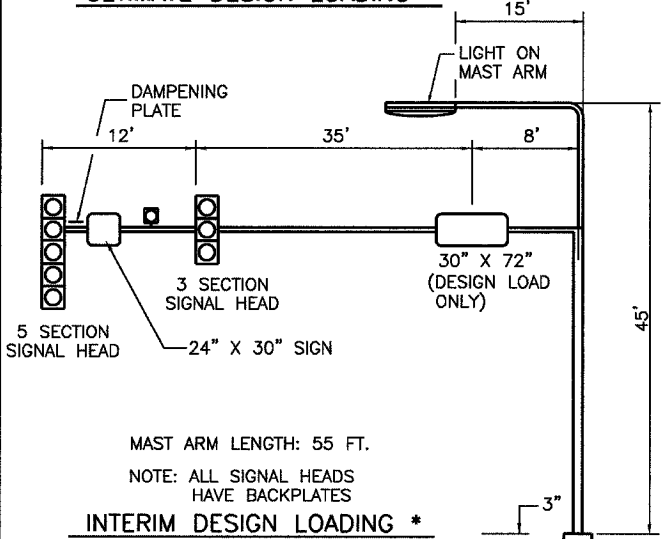
THIS SIGN SHALL BE LOCATED 6" TO 12" TO THE RIGHT OF EACH 5 SECTION MAST ARM MOUNTED LEFT TURN SIGNAL AND DIRECTLY BELOW AND PARALLEL TO THE BACKPLATE OF EACH POST BRACKETED 5 SECTION LEFT TURN SIGNAL FOR THE NORTHBOUND AND SOUTHBOUND APPROACHES.



THE CONTRACTOR SHALL SUPPLY AND MOUNT ONE SIGN WITH EACH PEDESTRIAN PUSH-BUTTON AND THIS SHALL BE INCLUDED IN THE COST OF PEDESTRIAN PUSH-BUTTON PAY ITEM.

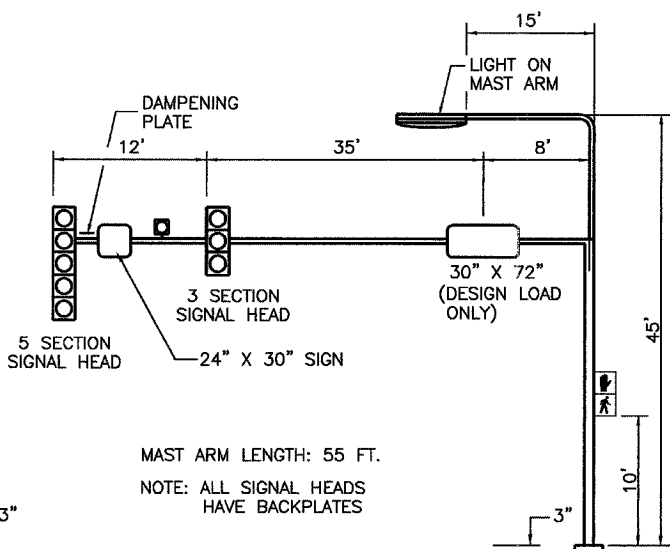


#### ULTIMATE DESIGN LOADING \*



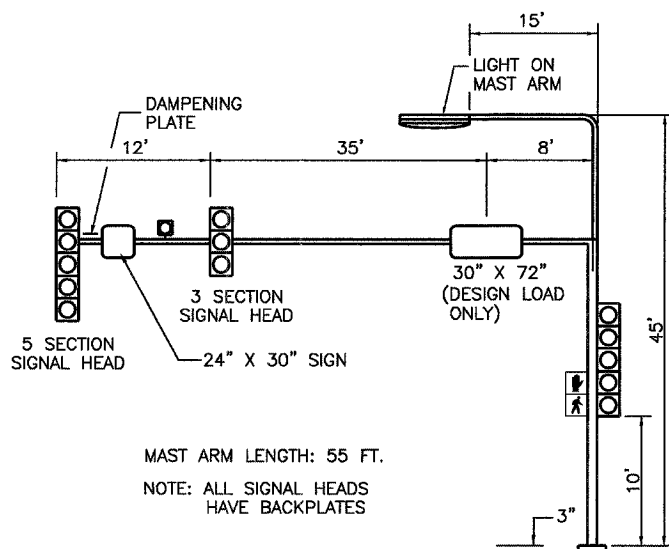
#### SOUTHEAST CORNER

NOT TO SCALE  
 \* POLE SHAFT AND MAST ARM CONNECTION SHALL BE DESIGNED FOR MAXIMUM EFFECTS OF EITHER THE ULTIMATE DESIGN LOADING OR INTERIM DESIGN LOADING AS SHOWN.



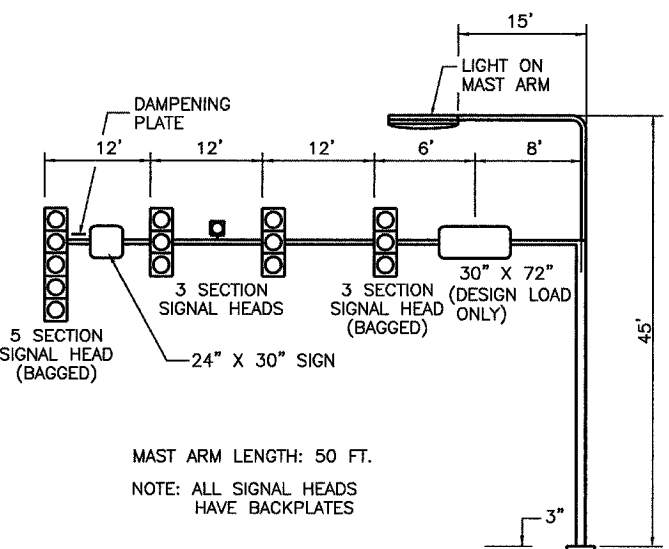
#### SOUTHWEST CORNER

NOT TO SCALE



#### NORTHEAST CORNER

NOT TO SCALE



#### NORTHWEST CORNER

NOT TO SCALE

| REVISIONS |      |
|-----------|------|
| NAME      | DATE |
|           |      |
|           |      |
|           |      |
|           |      |
|           |      |
|           |      |
|           |      |
|           |      |
|           |      |
|           |      |

ILLINOIS DEPARTMENT OF TRANSPORTATION  
 TRAFFIC SIGNAL DETAILS  
 FAP 591 (US 34)  
 AND WAUBONSEE DRIVE  
 SECTION 06-00034-00-RP  
 KENDALL COUNTY

SCALE: VERT.  
 DATE 02/07

DRAWN BY ARR  
 CHECKED BY JLS