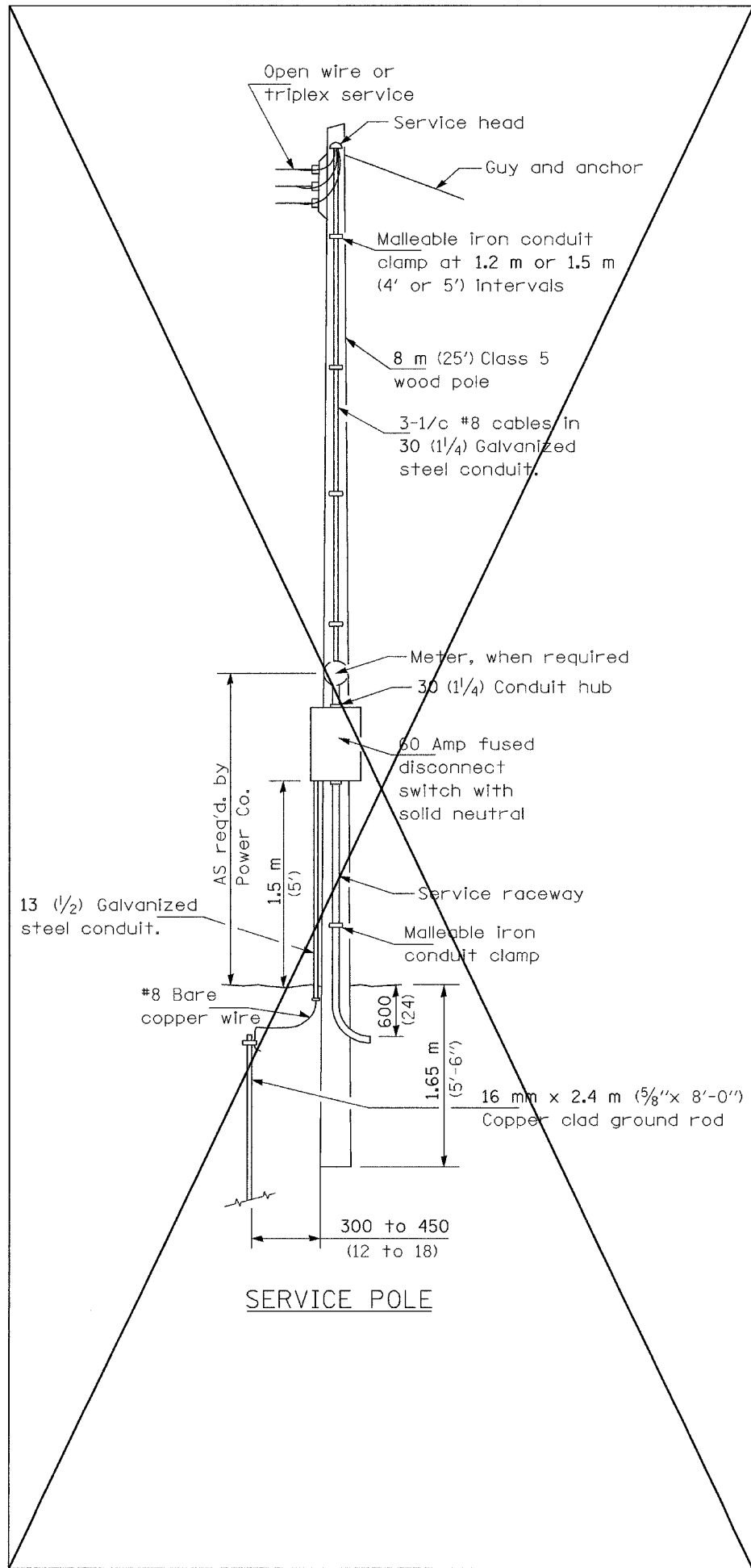


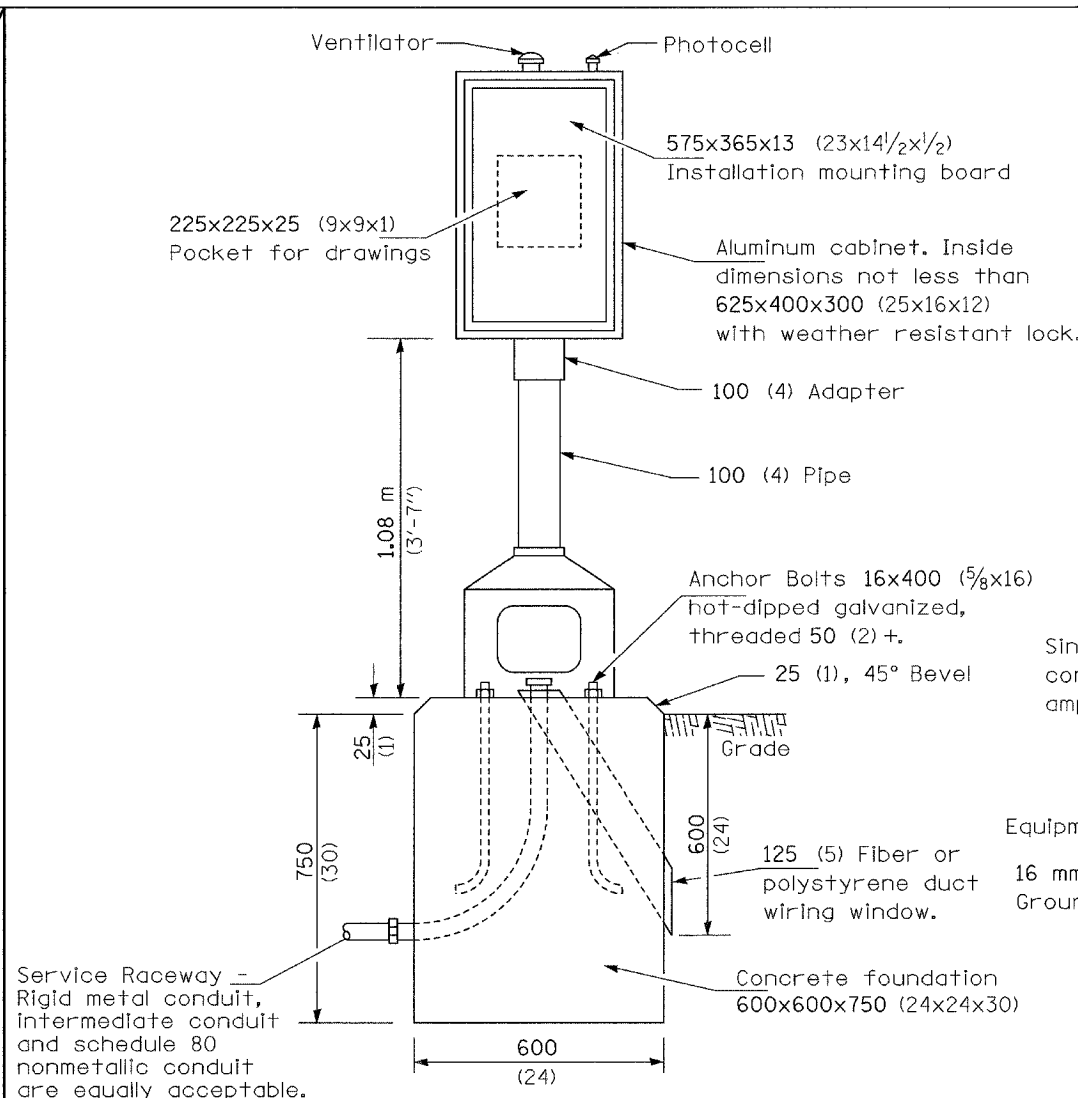
F.A.P. RTE.	SECTION	COUNTY	TOTAL SHEETS	SHEET NO.
*	**	KENDALL	37	23
STA. _____		TO STA. _____		
FED. ROAD DIST. NO. _____		ILLINOIS FED. AID PROJECT		

\* FAP 591 (US 34)  
 \*\* SECTION 06-00034-00-RP

- A Selector switch
- B 2 Pole 60 amp contactor
- C 2 Pole 60 amp service disconnect
- D,E,F 2 Pole 30 amp breakers
- G Photocell w/integral surge arrester



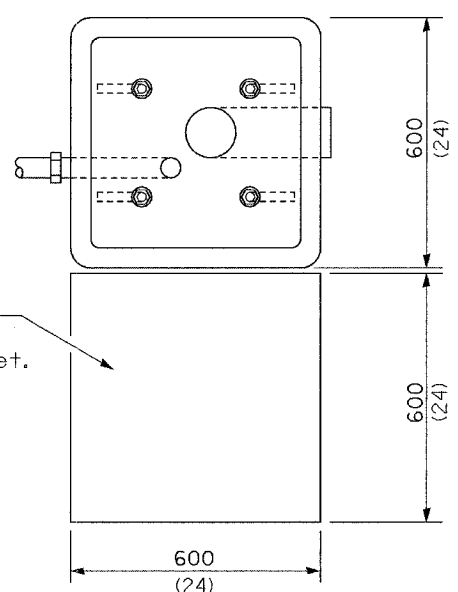
**SERVICE POLE**



**CONTROL INSTALLATION**

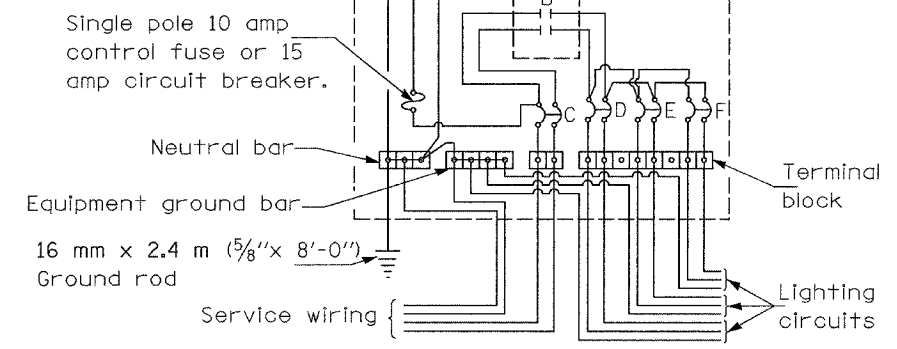
Front View

Concrete pad 600x600x200 (24x24x8) to be placed in front of control cabinet.



**FOUNDATION**

Top View



**WIRING DIAGRAM**

**GENERAL NOTES**

Locate service pole and control installation adjacent to R.O.W. line with a minimum distance of 9 m (30') from the edge of pavement. Exact location shall be established by the Engineer.

The underground service entrance wiring shall not exceed 46 m (150'). Total aerial and underground service between the control installation and primary transformer shall not exceed 76 m (250').

For 480 V. systems, a 480/120 V. control transformer will be required.

Where soil conditions permit, and where approved by the Engineer, a 150 mm dia. x 1.5 m (6" dia. x 5'-0") long metal screw in foundation may be used in lieu of a concrete foundation.

All dimensions are in millimeters unless otherwise shown.

- 240 V. SERVICE
- 480 V. SERVICE

**CONTROL INSTALLATION TYPE CB-RCS-60**

REVISIONS	
NAME	DATE

ILLINOIS DEPARTMENT OF TRANSPORTATION  
 TRAFFIC SIGNAL DETAILS  
 FAP 591 (US 34)  
 AND WAUBONSEE DRIVE  
 SECTION 06-00034-00-RP  
 KENDALL COUNTY

SCALE: VERT. \_\_\_\_\_  
 DATE 02/07  
 DRAWN BY ARR  
 CHECKED BY JLS

PLOT DATE = 02/07  
 PLOT SCALE = 1" = 20'  
 USER NAME = ARR