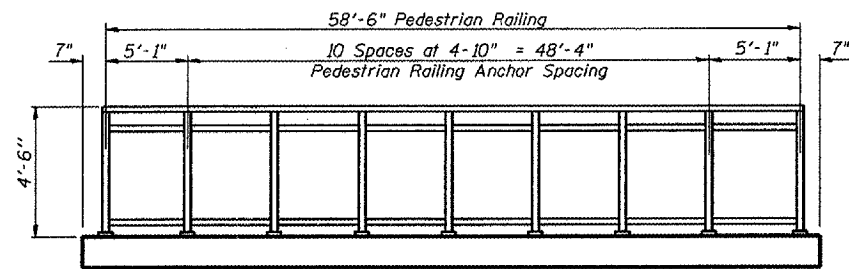
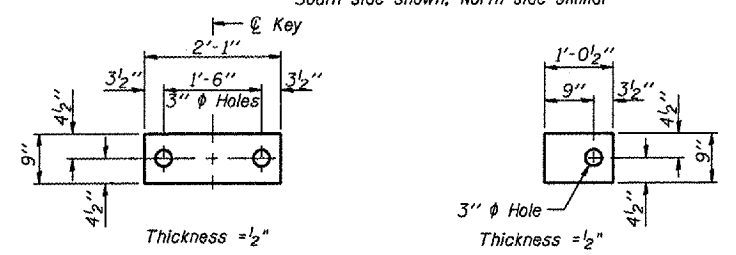


STATE OF ILLINOIS
DEPARTMENT OF TRANSPORTATION

ROUTE NO.	SECTION	COUNTY	SHEET	OF SET	SHEET NO. 3
		WOODFORD	24	11	10 SHEETS
* 05-00018-00-BR CONTRACT #89414					

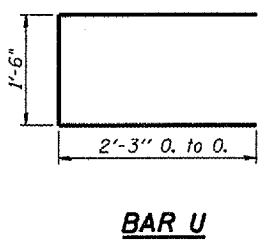


PROFILE AT PEDESTRIAN RAILS
South side shown, North side similar

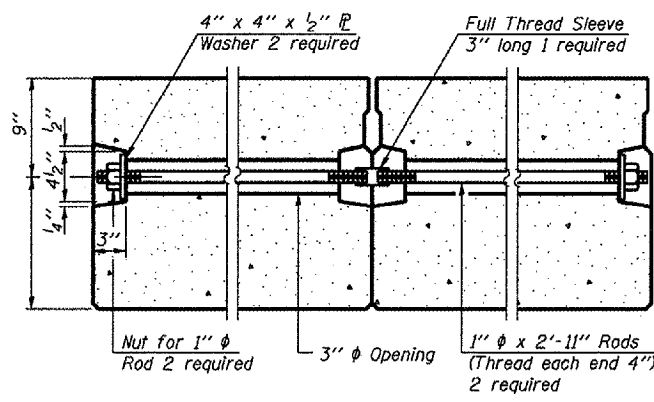


FABRIC BEARING PAD
(Interior) 2 Required
FIXED

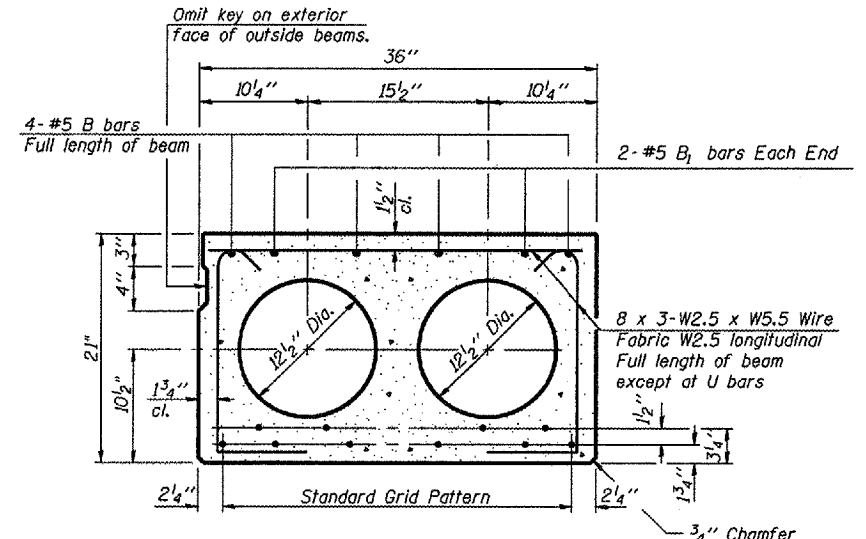
FABRIC BEARING PAD
(Exterior) 4 Required



BAR U



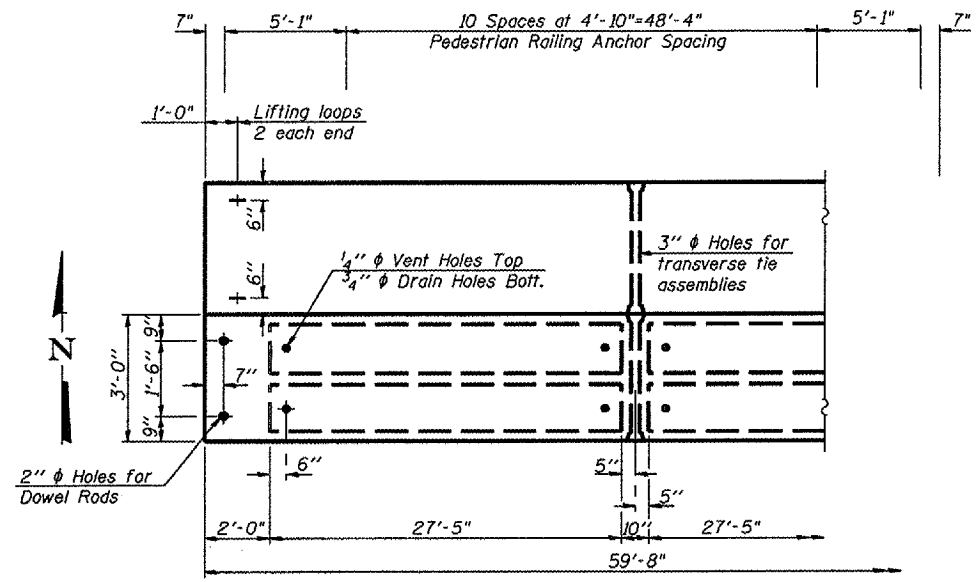
TYPICAL TRANSVERSE TIE ASSEMBLY



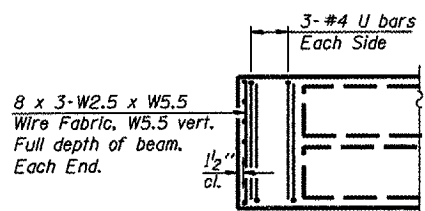
TYPICAL SECTION

1/2" ϕ Strands, Each Strand Stressed to 30,900 Lbs.
6 Strands 1 3/4" up, 4 Strands 3 3/4" up.

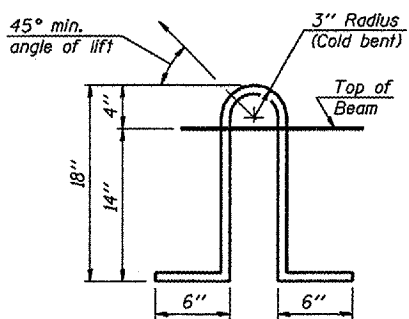
Note:
Place strands symmetrically about ϕ of beam.



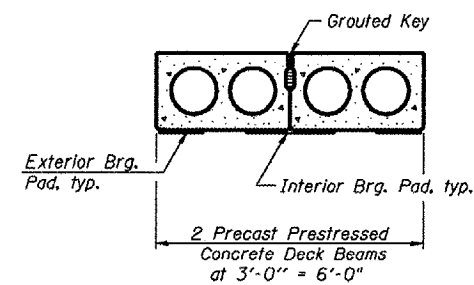
PLAN



END PLAN



LIFTING LOOP DETAIL



**CROSS SECTION
LOOKING EAST**

NOTES

Prestressing steel shall be uncoated high strength, low relaxation 7-wire strand, Grade 270. The nominal diameter shall be 1/2" and the nominal cross-sectional area shall be 0.153 sq. in. Lifting loops shall be two (2) 1/2" ϕ -270 ksi strands, as shown. The 1" ϕ rods in the transverse tie assembly shall be tightened to a snug fit and the threads set. Pockets that receive transverse tie bar on outside shall be filled with grout after transverse tie assembly is in place. Non prestressing steel shall conform to AASHTO M-31, M-322 Grade 60. The bearing seat surfaces shall be adjusted by shimming to assure firm and even bearing. Two 1/8" fabric adjusting shims of the dimensions of the Exterior Bearing Pad shall be provided for each bearing. Keyway surfaces shall be cleaned to remove form oil or other bond breaking material prior to shipment of the beams. Cleaning shall be done by sandblasting the keyway areas between top of the beam and the bottom edge of the key. Corrosion Inhibitor, as covered in the Special Provisions, shall be used in the concrete for precast prestressed concrete deck beams. Required Release Strength, f'ci, shall be 4,000 p.s.i. Refer to sheet 8 for the pedestrian railing inserts.

BILL OF MATERIAL - 1 BEAM

Bar	No.	Size	Length	Shape
B	4	#5	59'-5"	—
B1	4	#5	12'-0"	—
U	12	#4	6'-0"	—
Precast Prestressed Conc. Deck Bms. (21" Depth)		Sq. Ft.	358	

21" BEAM DETAIL
WALNUT STREET OVER SNAG CREEK
SECTION 05-00018-00-BR
WOODFORD COUNTY
STATION 13+91.11

DESIGNED	
CHECKED	
DRAWN	
CHECKED	

PD-3-S 10-22-04