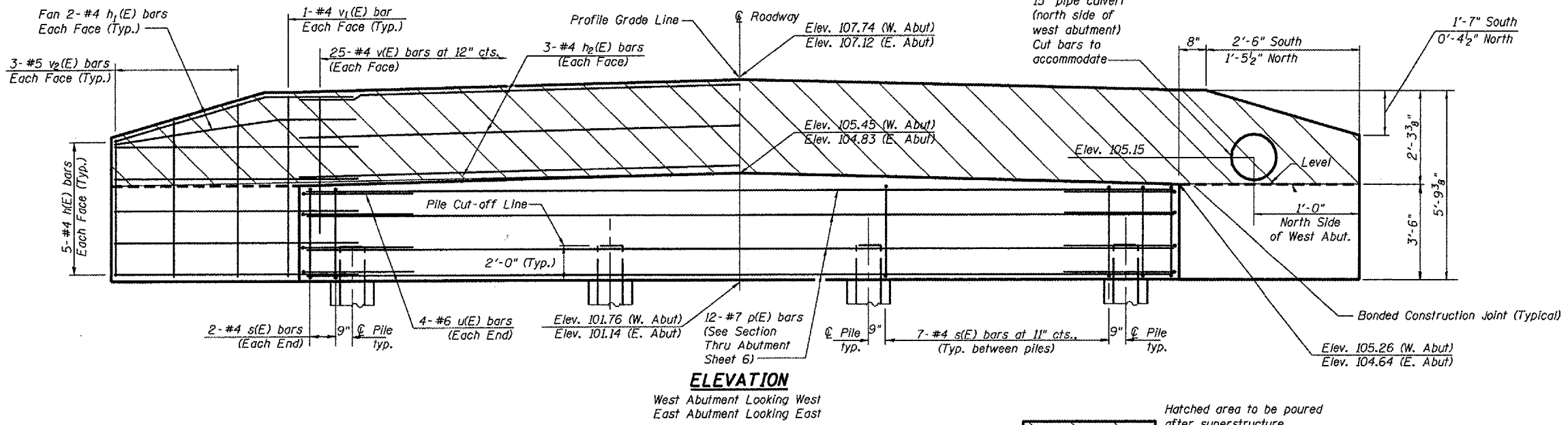


STATE OF ILLINOIS
DEPARTMENT OF TRANSPORTATION

ROUTE NO.	SECTION	COUNTY	SHEETS	SET	SHEET NO. 4
		WOODFORD	24	12	10 SHEETS
* 05-00018-00-BR CONTRACT #89414					

Note:
Reinforcement bars designated
(E) shall be epoxy coated.



Note:
North wingwalls shall slope to
match back of abutment elevations
at pedestrian substructure.

PILE DATA - TYPE HP 12x53

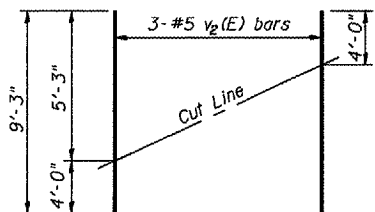
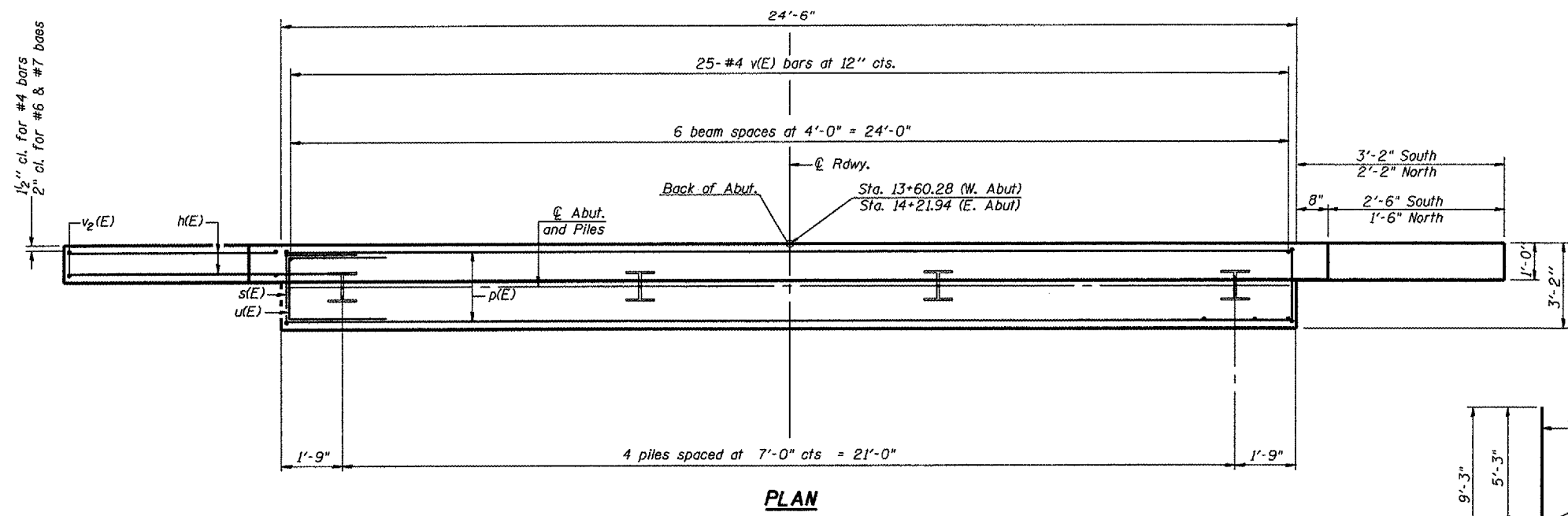
Location	East Abut	West Abut
No. Required	4	3 *
Estimated Length	49 Feet	54 Feet
Required Capacity	70 Tons (Drive to refusal)	70 Tons (Drive to refusal)

* Does not include test pile

Hatched area to be poured
after superstructure
is in place. Quantity
of concrete above
bearing seat included
in concrete structures.

BILL OF MATERIAL - 2 ABUTMENTS

Bar	No.	Size	Length	Shape
h (E)	40	#4	4'-4"	—
h ₁ (E)	16	#4	4'-10"	—
h ₂ (E)	12	#4	24'-6"	—
p(E)	24	#7	24'-2"	—
s (E)	50	#4	13'-0"	□
u(E)	16	#6	10'-10"	□
v (E)	100	#4	3'-11"	—
v ₁ (E)	8	#4	5'-6"	—
v ₂ (E)	10	#5	9'-3"	—
Concrete Structures	CU YD		28	
Reinforcement Bars, Epoxy Coated	POUND		2631	
Structure Excavation	CU YD		94	
Test Pile				
Steel HP12x53	EACH		1	
Furnishing Steel				
Piles HP 12x53	FOOT		358	
Driving Steel Piles	FOOT		358	



SUBSTRUCTURE ABUTMENTS
WALNUT STREET OVER SNAG CREEK
SECTION 05-00018-00-BR
WOODFORD COUNTY
STATION 13+91.11

DESIGNED -
CHECKED -
DRAWN -
CHECKED -

AI-0 10-22-04

SEE SHEET 6 FOR
ADDITIONAL INFORMATION

