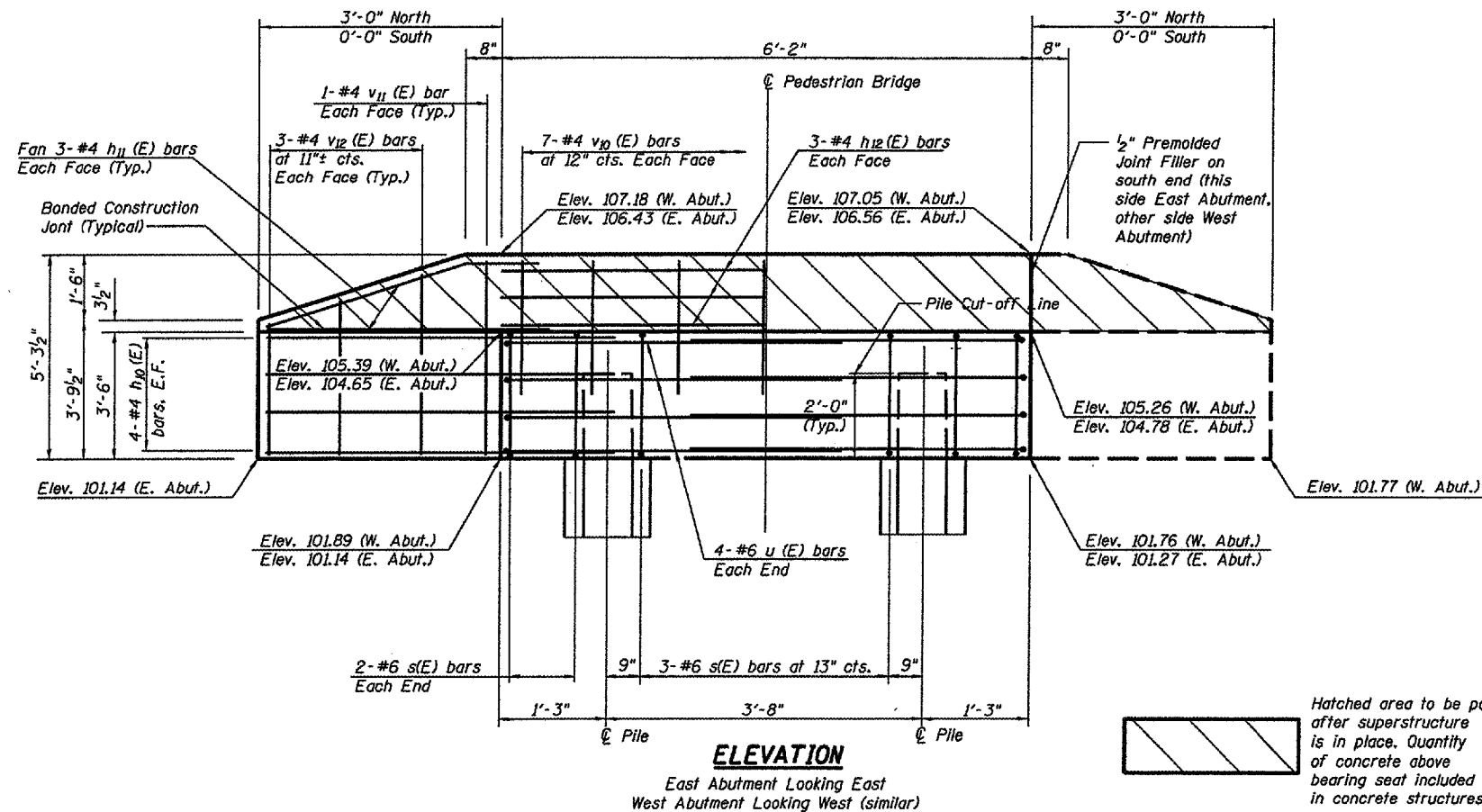


STATE OF ILLINOIS  
DEPARTMENT OF TRANSPORTATION

ROUTE NO.	SECTION	COUNTY	SHEET	TOTAL SHEETS	SHEET NO. 5
		WOODFORD	24	13	10 SHEETS
FED. ROAD DIST. NO. P		ILLINOIS	FED. AID PROJECT		
* 05-00018-00-BR CONTRACT #89414					



Note:  
There are wingwalls stemming south from the pedestrian abutments. The north wingwalls from the roadway abutments will extend to the south edge of the abutment seats.

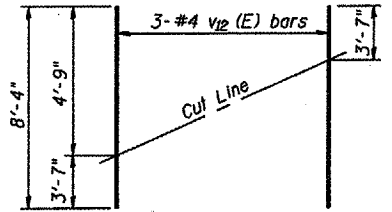
PILE DATA - TYPE HP 12x53

Location	East Abutment	West Abutment
No. Required	2	2
Estimated Length	41 Feet	41 Feet
Required Capacity	24 Tons	24 Tons

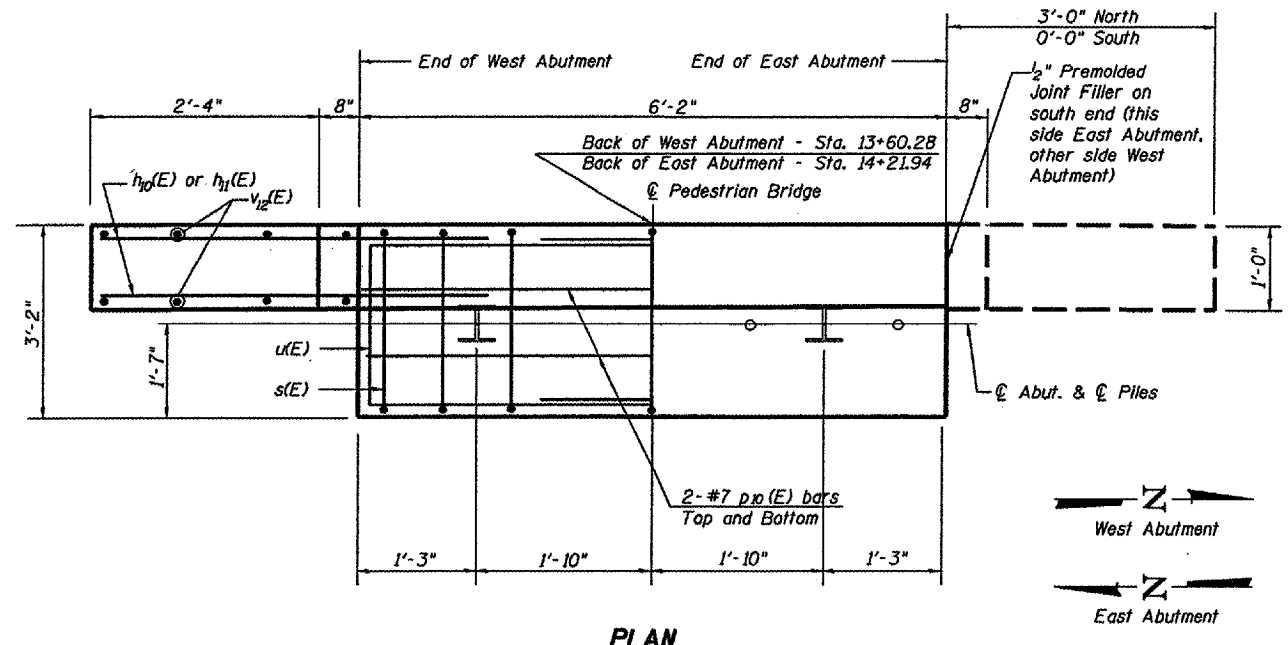
Test pile not required

BILL OF MATERIAL 2 ABUTMENTS

Bar	No.	Size	Length	Shape
h <sub>10</sub> (E)	16	#4	4'-2"	—
h <sub>11</sub> (E)	12	#4	4'-9"	—
h <sub>12</sub> (E)	12	#4	6'-2"	—
p <sub>10</sub> (E)	8	#7	5'-10"	—
s(E)	14	#4	13'-0"	□
u(E)	16	#6	10'-10"	—
v <sub>10</sub> (E)	28	#4	3'-5"	—
v <sub>11</sub> (E)	4	#4	5'-0"	—
v <sub>12</sub> (E)	6	#4	8'-4"	—
Concrete Structures	CU YD		7	
Reinforcement Bars, Epoxy Coated	Pound		721	
Structure Excavation	CU YD		19	
Furnishing Steel Piles HP12x53	FOOT		164	
Driving Steel Piles	FOOT		164	



FIELD CUTTING DIAGRAM  
Order v<sub>12</sub> (E) full length. Cut as shown and use remainder of bars in opposite face.



PLAN

\*Contractor shall install a PTF between the Roadway Wingwall and the Pedestrian Abutment.

PEDESTRIAN ABUTMENTS  
WALNUT STREET OVER SNAG CREEK  
SECTION 05-00018-00-BR  
WOODFORD COUNTY  
STATION 13+91.11

DESIGNED -
CHECKED -
DRAWN -
CHECKED -