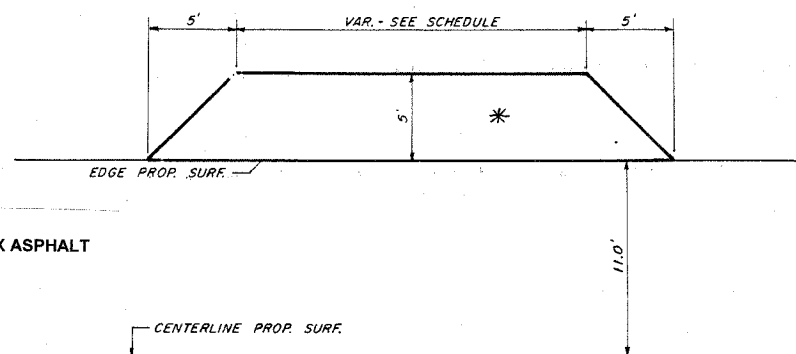


### ENTRANCE DETAIL

SCALE: 1" = 5'

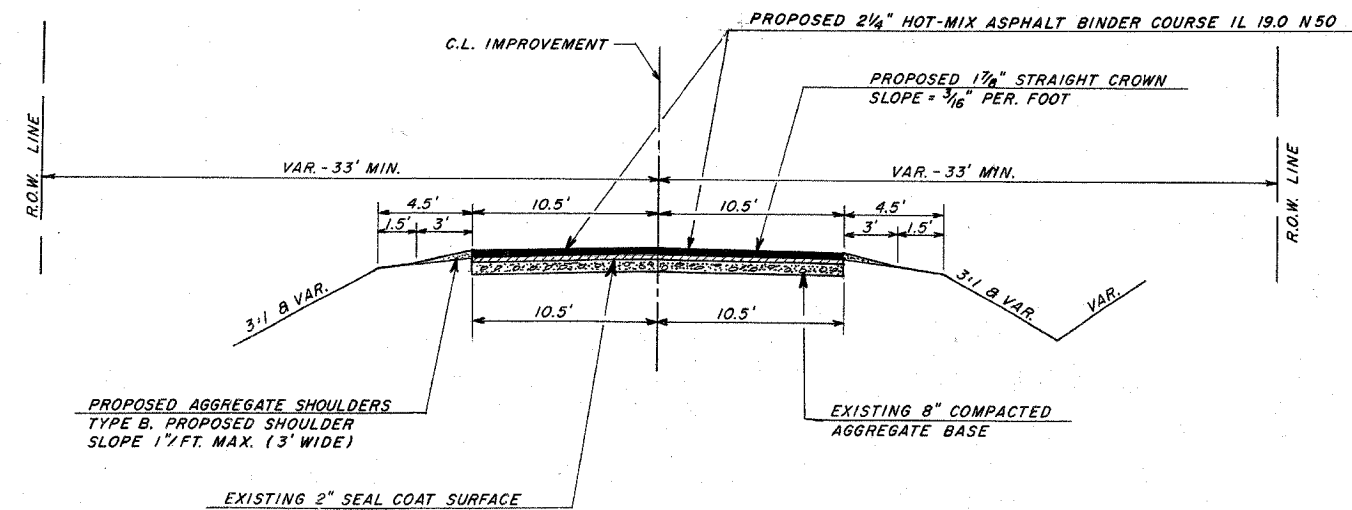


\*CONSISTS OF 2 1/4" HOT MIX ASPHALT BINDER COURSE, IL 19.0 N50

#### SCHEDULE OF ENTRANCES

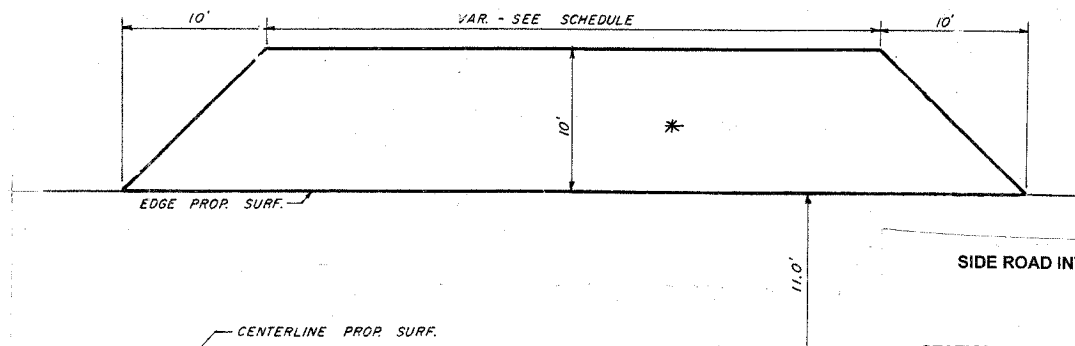
STATION	WIDTH	SQ YDS	TONS MIXT. REQUIRED	STATION	WIDTH	SQ YDS	TONS MIXT. REQUIRED	STATION	WIDTH	SQ YDS	TONS MIXT. REQUIRED	
LT 38+50	22'	15.0	1.89	LT 81+40	35'	20.5	2.58	LT 110+85	22'	15.0	1.89	
LT 40+50	22'	15.0	1.89	LT 83+60	22'	15.0	1.89	RT 114+90	22'	15.0	1.89	
LT 50+05	22'	15.0	1.89	LT 84+10	22'	15.0	1.89	RT 120+80	22'	15.0	1.89	
RT 52+40	22'	15.0	1.89	LT 89+05	35'	20.5	2.58	RT 124+15	22'	15.0	1.89	
RT 58+92	22'	15.0	1.89	LT 91+20	22'	15.0	1.89	LT 127+60	22'	15.0	1.89	
RT 62+05	22'	15.0	1.89	RT 92+40	22'	15.0	1.89	LT 129+40	22'	15.0	1.89	
LT 69+20	35'	20.5	2.58	LT 97+40	22'	15.0	1.89	RT 133+80	22'	15.0	1.89	
RT 69+20	22'	15.0	1.89	LT 102+30	22'	15.0	1.89	LT 134+90	22'	15.0	1.89	
LT 78+80	22'	15.0	1.89	RT 102+80	22'	15.0	1.89	RT 136+50	22'	15.0	1.89	
RT 79+00	35'	20.5	2.58	LT 103+50	22'	15.0	1.89	RT 139+60	22'	15.0	1.89	
RT 81+40	35'	20.5	2.58	LT 108+30	22'	15.0	1.89					
<b>TOTAL</b>											507.5	63.93
											SQ YD	TON

### PROPOSED TYPICAL CROSS SECTION



### INTERSECTION DETAIL

SCALE: 1" = 6'

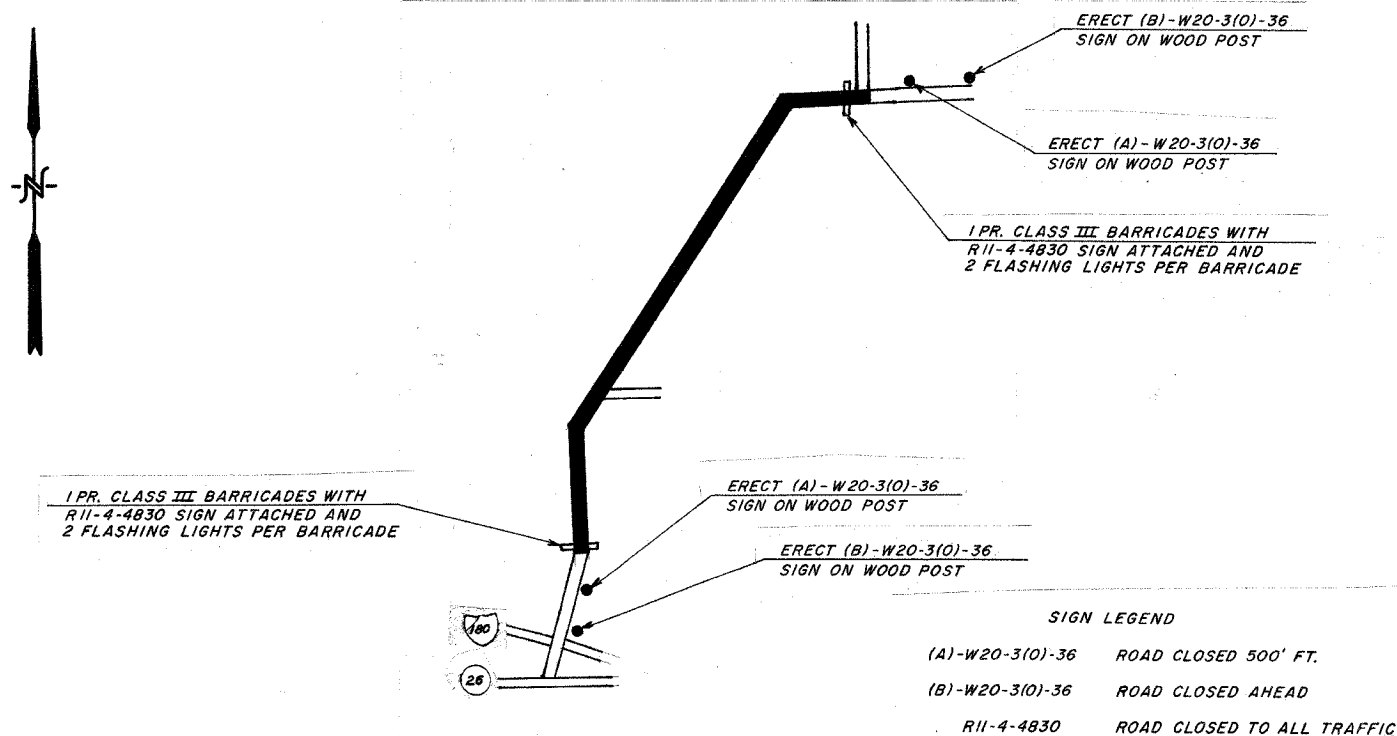


\*CONSISTS OF 2 1/4" HOT MIX ASPHALT BINDER COURSE, IL 19.0 N50

#### SIDE ROAD INTERSECTIONS

STATION	WIDTH	SQ YDS	TONS MIXT. REQUIRED
LT 64+38	40'	55.5	6.99
RT 64+38	40'	55.5	6.99
LT 140+88	40'	55.5	6.99
<b>TOTAL</b>			20.97
			SQ YD
			TON

### LOCATION MAP SHOWING REQUIRED BARRICADE AND SIGN PLACEMENT



#### SCHEDULE OF NO PASSING ZONES

STATION	FOOT	
RT 36+50 - 37+50	100'	
LT 36+50 - 43+50	700'	
RT 56+00 - 66+50	1050'	
LT 61+70 - 73+70	1200'	
RT 89+25 - 99+35	1010'	
LT 99+35 - 105+00	565'	
RT 121+75 - 131+50	975'	
LT 126+60 - 137+60	1100'	
<b>TOTAL</b>		6700
		FOOT

### BUTT JOINT & TAPER DETAIL

