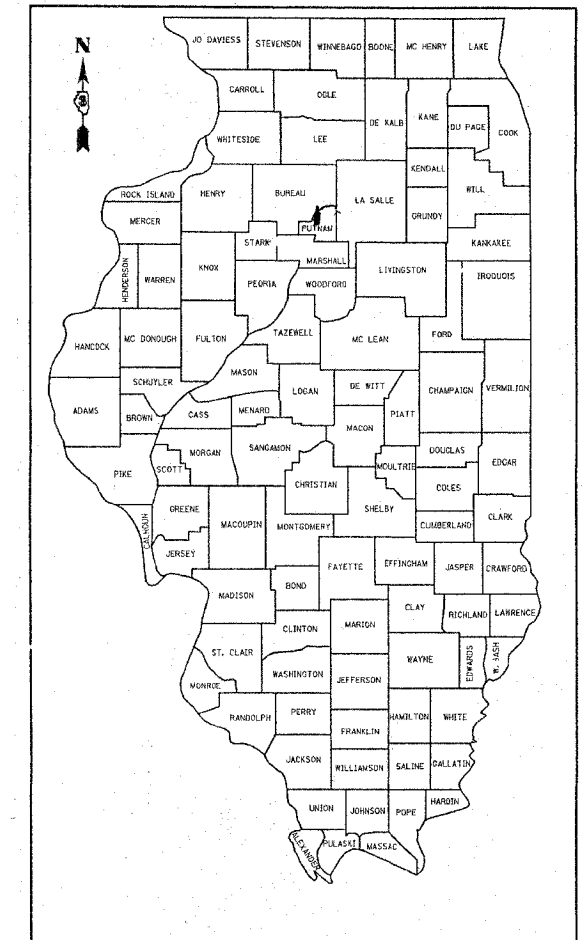


FAS ROUTE NO.	COUNTY	SECTION	CO. HWY. NO.	SHEET NO.	TOTAL SHEETS
	PUTNAM	08-00021-00-RS	1	1	3

CONTRACT NO. 89433

**STATE OF ILLINOIS
DEPARTMENT OF TRANSPORTATION
DIVISION OF HIGHWAYS
PLANS FOR PROPOSED
SURFACE TRANSPORTATION-RURAL
PUTNAM COUNTY
COUNTY HIGHWAY 1
SECTION 08-00021-00-RS
PROJECT RS 0155(018)
JOB NO. C-94-132-06
CONTRACT NO. 89433**



LOCATION OF SECTION INDICATED THUS:

INDEX OF SHEETS

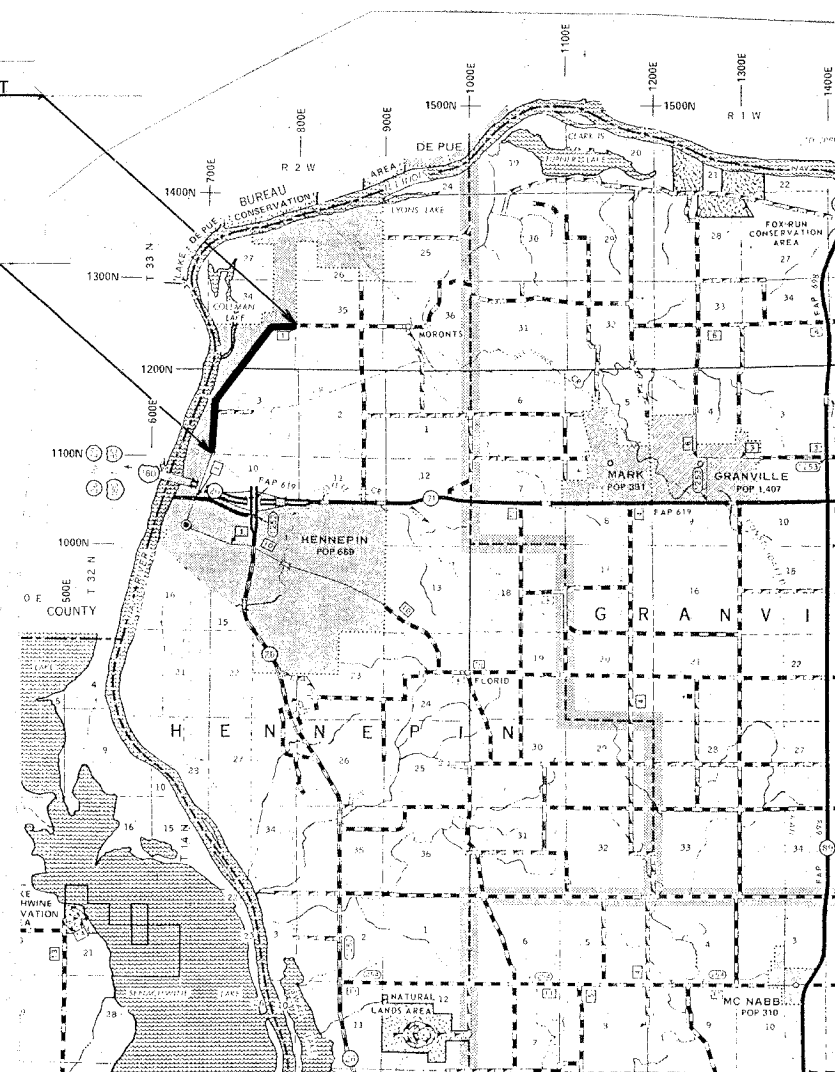
SHEET NO. 1	COVER SHEET AND SUMMARY OF QUANTITIES
SHEET NO. 2	TABULATION OF QUANTITIES
SHEET NO. 3	TYPICAL CROSS SECTION, ENTRANCE DETAILS, INTERSECTION DETAILS, BUTT JOINT AND TAPER DETAIL, NO PASSING ZONES, BARRICADE AND SIGN PLACEMENT MAP

STANDARDS:

701311-02	LANE CLOSURE TWO LANE, TWO WAY MOVING OPERATIONS - DAY ONLY FOR SPEEDS LESS THAN 45 MPH
702001-06	TRAFFIC CONTROL DEVICES
780001-01	TYPICAL PAVEMENT MARKINGS
BLR 22-4	TYPICAL APPLICATION OF TRAFFIC CONTROL DEVICES TWO LANE, TWO WAY, RURAL, OVER ONE DAY

PROPOSED IMPROVEMENT
ENDS STA. 141+80

PROPOSED IMPROVEMENT
BEGINS STA. 36+90



**SUMMARY OF QUANTITIES
CONSTRUCTION CODE 1000**

CODE NO.	UNIT	ITEM	QUANTITY
40600100	GALLON	BITUMINOUS MATERIALS (PRIME COAT)	2488.0
40600982	SQ YD	HOT-MIX ASPHALT SURFACE REMOVAL BUTT JOINT	59.0
48101200	TON	AGGREGATE SHOULDERS, TYPE B	1000.0
* 78001110	FOOT	PAINT PAVEMENT MARKING-LINE 4"	30302.0
40603080	TON	HOT-MIX ASPHALT BINDER COURSE IL 19.0 N50	3169.0
67100100	LS	MOBILIZATION	1

*SPECIALTY ITEM

NET LENGTH OF SECTION 10,490.00 FEET = 1.9867 MILES

CLASS III ROAD 20 YEAR DESIGN

CURRENT ADT	312
(20 year) DESIGN ADT	380
STRUCTURAL DESIGN TRAFFIC	345
P.C. 86% ADT	297
S.U. 5% ADT	17
M.U. 9% ADT	31

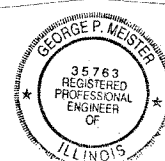
T.F. =	0.138
I.B.R. =	3.3
Dt =	2.91

Provided 3.04 STAGE II

PROPOSED BITUMINOUS RESURFACING:
STAGE II 2 1/4" BINDER COURSE
2 1/4" BINDER, 1 1/2" SURFACE

FUNCTIONAL CLASSIFICATION =
MINOR COLLECTOR

PLANS PREPARED BY:
MARCH 15, 2007
GEORGE P. MEISTER
COUNTY ENGINEER
REGISTERED PROFESSIONAL ENGINEER
George P. Meister
Reg. No. 62-35763
Exp. Date 11-30-07



J.U.L.I.E. 1-800-892-0123

APPROVED:	<i>March 16, 2007</i>
	<i>George P. Meister</i> PUTNAM COUNTY ENGINEER
PASSED:	<i>June 1, 2007</i>
	<i>John Cobble</i> DISTRICT ENGINEER OF LOCAL ROADS & STREETS
Releasing For Bid Based on Limited Review	<i>June 1, 2007</i>
	<i>John</i> DEPUTY DIRECTOR FOR HIGHWAYS REGION THREE ENGINEER STATE OF ILLINOIS DEPARTMENT OF TRANSPORTATION

TABULATION OF QUANTITIES

40600100 BITUMINOUS MATERIALS (PRIME COAT)

LOCATION	WIDTH	QUANTITY REQUIRED
STA. 36+90 TO 141+80	21.0	2447.6 GAL
RATE OF APPL. = 0.1 GAL/ S.Y.	TOTAL	2447.6 (USE 2448 GAL)

40600982 HOT-MIX ASPHALT SURFACE REMOVAL BUTT JOINT

LOCATION	WIDTH	QUANTITY REQUIRED
STA. 36+90 (MAIN LANES)	21.0	59.0 SQ YD
	TOTAL	59.0 (USE 59 SQ YD)

48101200 AGGREGATE SHOULDERS, TYP B

LOCATION	WIDTH	QUANTITY REQUIRED
STA. 36+90 - 141+80 (MAIN LANE)	21.0	1000.0 TON
RATE OF APPL. = 2.08 TON/S.Y.	TOTAL	1000.0 USE (1000.0 TON)

78001110 PAINT PAVEMENT MARKING - LINE 4"

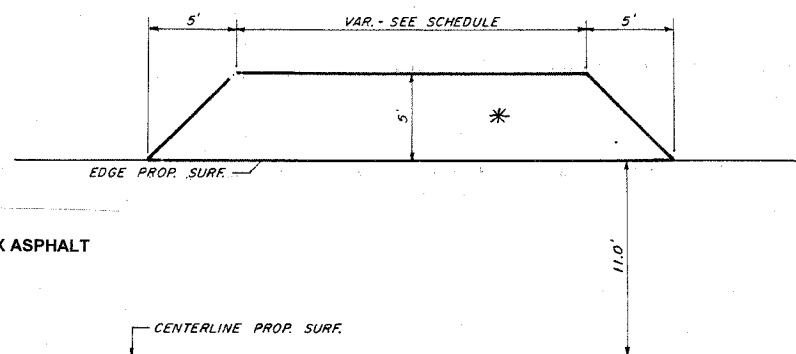
LOCATION	WIDTH	QUANTITY REQUIRED
STA. 36+90 - 141+80 (EDGE LINES)	4"	20980 FT
STA. 36+90 - 141+80 (CENTERLINE)	4"	2622 FT.
ENTIRE SECTION (NO PASSING ZONES)	4"	<u>6700 FT</u>
		30302 FT
	TOTAL	30302.0 (USE 30302 FT)

40603080 HOT-MIX ASPHALT BINDER COURSE IL 19.0 N50

LOCATION	WIDTH	QUANTITY REQUIRED
STA. 36+90 - 141+80 (MAIN LANES)	21.0'	3084.00 TON
ENTIRE SECTION (ENTRANCES)	VAR.	63.93 TON
ENTIRE SECTION (INTERSECTIONS)	VAR.	<u>20.97 TON</u>
		3169.90 TON
RATE OF APPL. = 112 LB./S.Y./IN.	TOTAL	3168.90 (USE 3169 TON)

ENTRANCE DETAIL

SCALE: 1" = 5'

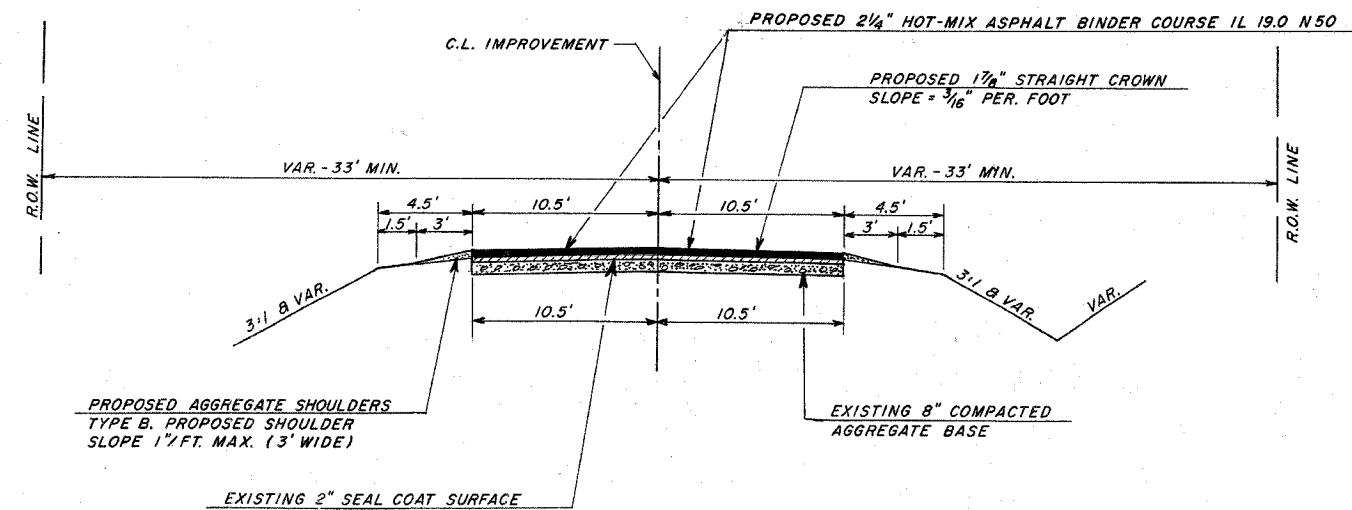


*CONSISTS OF 2 1/4" HOT MIX ASPHALT BINDER COURSE, IL 19.0 N50

SCHEDULE OF ENTRANCES

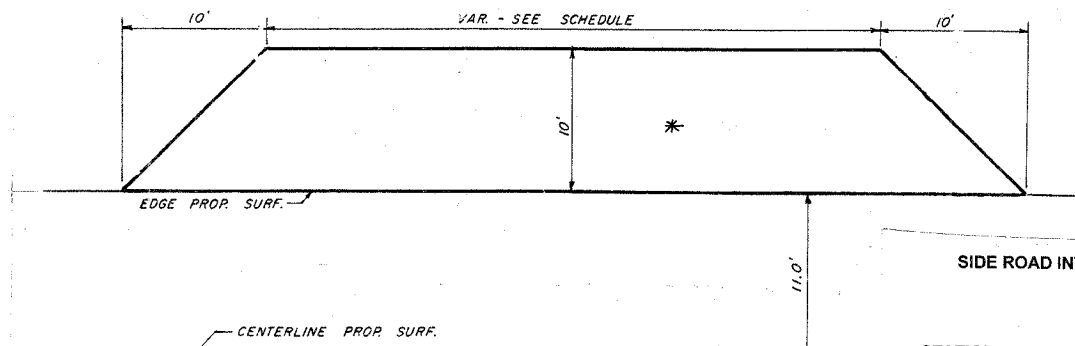
STATION	WIDTH	SQ YDS	TONS MIXT. REQUIRED	STATION	WIDTH	SQ YDS	TONS MIXT. REQUIRED	STATION	WIDTH	SQ YDS	TONS MIXT. REQUIRED	
LT 38+50	22'	15.0	1.89	LT 81+40	35'	20.5	2.58	LT 110+85	22'	15.0	1.89	
LT 40+50	22'	15.0	1.89	LT 83+60	22'	15.0	1.89	RT 114+90	22'	15.0	1.89	
LT 50+05	22'	15.0	1.89	LT 84+10	22'	15.0	1.89	RT 120+80	22'	15.0	1.89	
RT 52+40	22'	15.0	1.89	LT 89+05	35'	20.5	2.58	RT 124+15	22'	15.0	1.89	
RT 58+92	22'	15.0	1.89	LT 91+20	22'	15.0	1.89	LT 127+60	22'	15.0	1.89	
RT 62+05	22'	15.0	1.89	RT 92+40	22'	15.0	1.89	LT 129+40	22'	15.0	1.89	
LT 69+20	35'	20.5	2.58	LT 97+40	22'	15.0	1.89	RT 133+80	22'	15.0	1.89	
RT 69+20	22'	15.0	1.89	LT 102+30	22'	15.0	1.89	LT 134+90	22'	15.0	1.89	
LT 78+80	22'	15.0	1.89	RT 102+80	22'	15.0	1.89	RT 136+50	22'	15.0	1.89	
RT 79+00	35'	20.5	2.58	LT 103+50	22'	15.0	1.89	RT 139+60	22'	15.0	1.89	
RT 81+40	35'	20.5	2.58	LT 108+30	22'	15.0	1.89					
TOTAL											507.5	63.93
											SQ YD	TON

PROPOSED TYPICAL CROSS SECTION



INTERSECTION DETAIL

SCALE: 1" = 6'

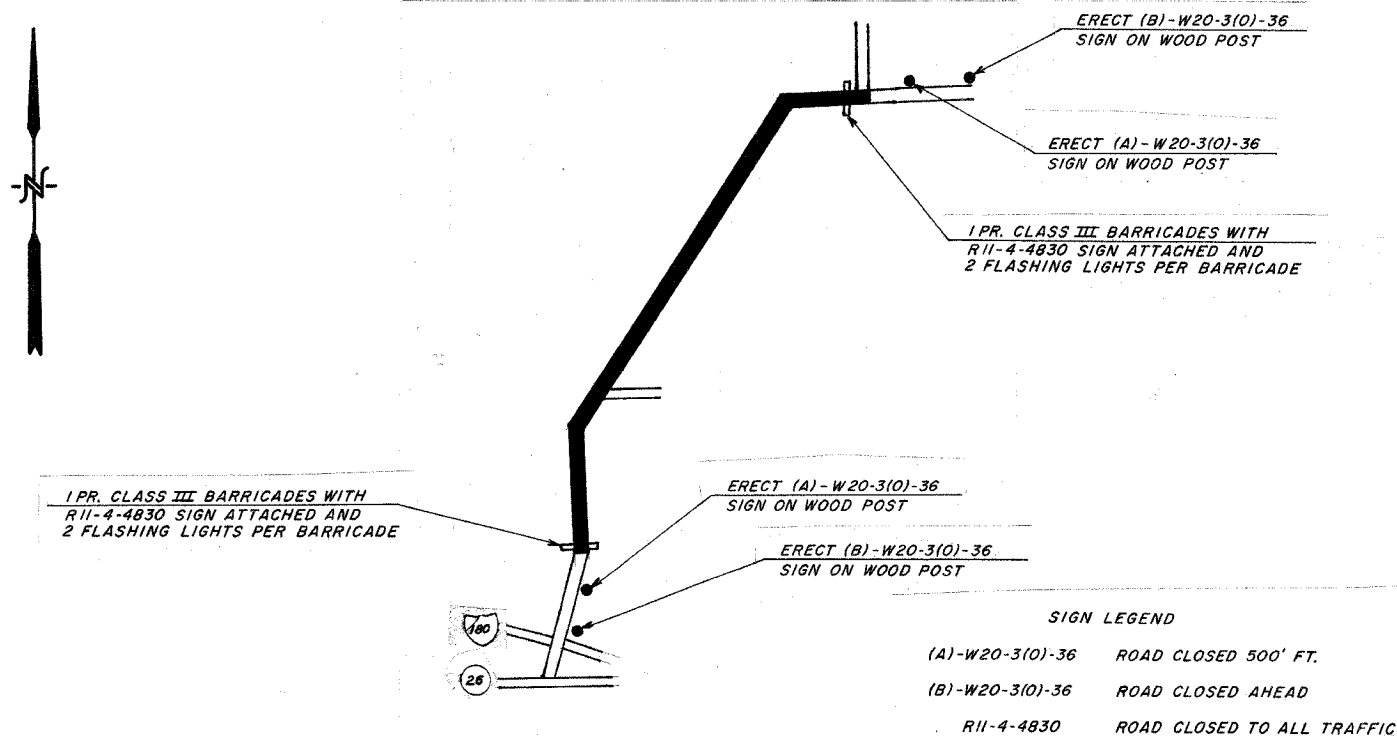


*CONSISTS OF 2 1/4" HOT MIX ASPHALT BINDER COURSE, IL 19.0 N50

SIDE ROAD INTERSECTIONS

STATION	WIDTH	SQ YDS	TONS MIXT. REQUIRED
LT 64+38	40'	55.5	6.99
RT 64+38	40'	55.5	6.99
LT 140+88	40'	55.5	6.99
TOTAL			20.97
			SQ YD
			TON

LOCATION MAP SHOWING REQUIRED BARRICADE AND SIGN PLACEMENT



SCHEDULE OF NO PASSING ZONES

STATION	FOOT	
RT 36+50 - 37+50	100'	
LT 36+50 - 43+50	700'	
RT 56+00 - 66+50	1050'	
LT 61+70 - 73+70	1200'	
RT 89+25 - 99+35	1010'	
LT 99+35 - 105+00	565'	
RT 121+75 - 131+50	975'	
LT 126+60 - 137+60	1100'	
TOTAL		6700
		FOOT

BUTT JOINT & TAPER DETAIL

