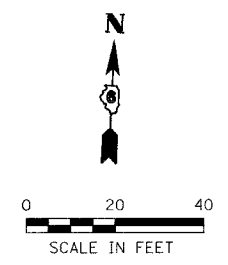


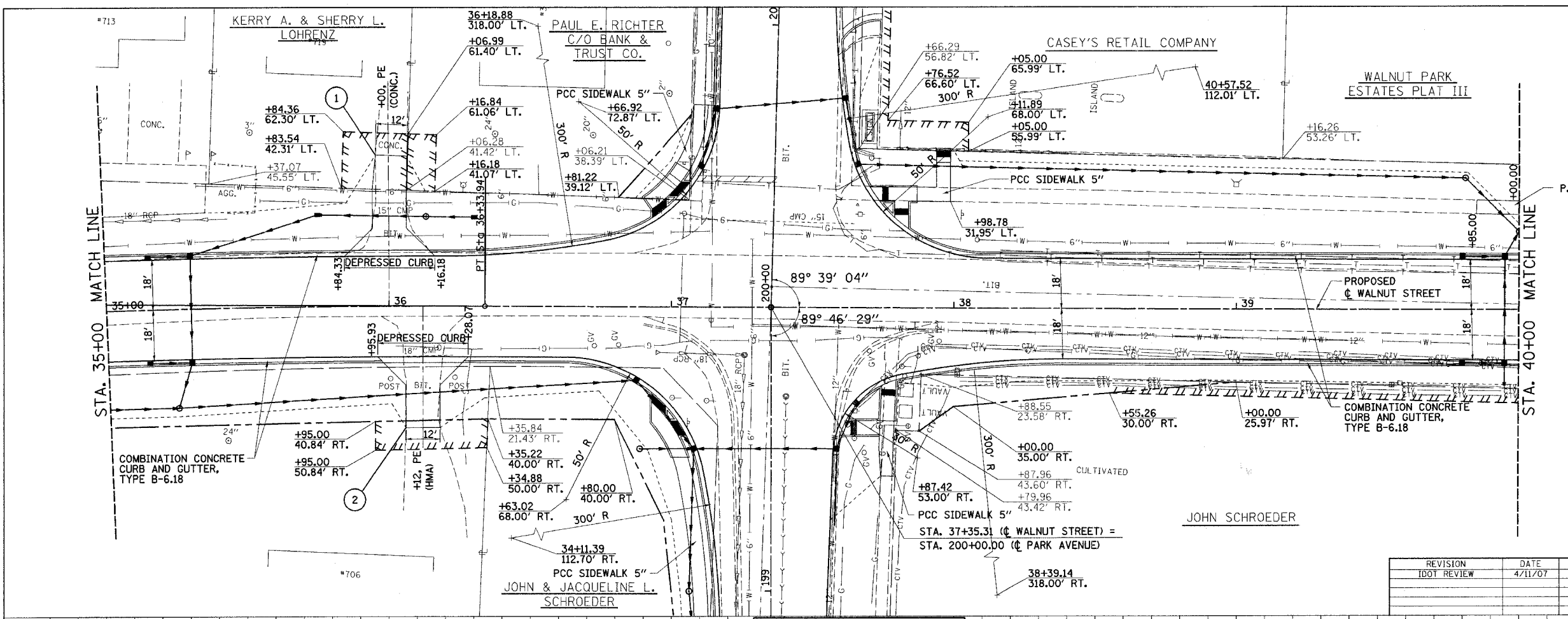
F.A.U. RTE.	SECTION	COUNTY	TOTAL SHEETS	SHEET NO.
8146	06-00029-00-TL	SANGAMON	67	20
STA. 35+00		TO STA. 40+00		
FED. ROAD DIST. NO.		ILLINOIS	FED. AID PROJECT #	
*H5-8146(003)				



PLAN	DATE	BY
SURVEYED		
PLOTTED		
CHECKED		
REVISIONS		
NO.		

PROFILE	DATE	BY
SURVEYED		
PLOTTED		
CHECKED		
REVISIONS		
NO.		

PLOT DATE = 5/24/2007  
 FILE NAME = J:\06152\DRAWINGS\06152PLN1.dgn  
 PLOT SCALE = 20.0000 / IN.  
 OPERATOR =



**LEGEND**

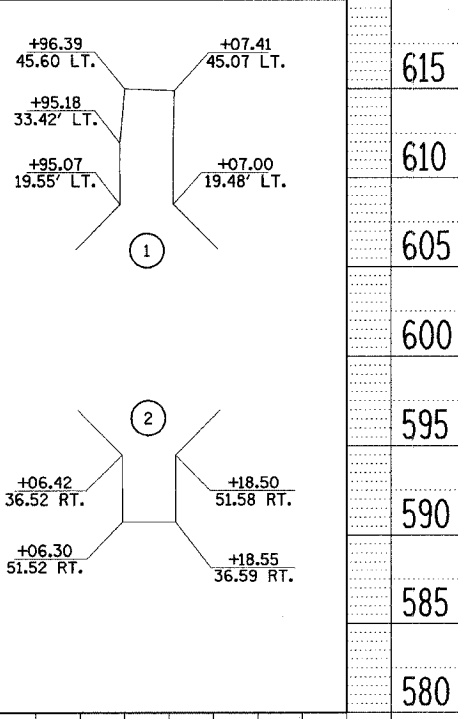
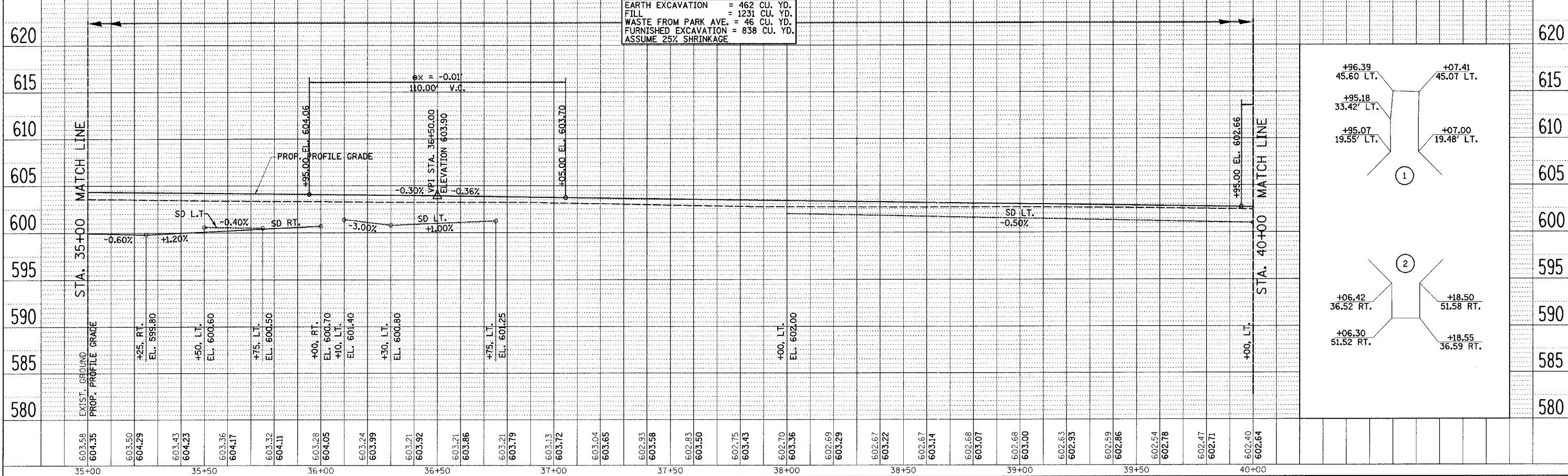
- EXISTING R.O.W.
- - - CONST. LIMITS
- PROPOSED R.O.W.
- /// TEMP. CONST. EASEMENT

REVISION	DATE	BY
1	4/11/07	MML
2		
3		

**GREENE & BRADFORD, INC.**  
 OF ENGINEERS  
 601 N. 12th St., Suite 100, Chatham, IL 62825  
 (618) 426-1234

COMPUTER FILE NO. 06152PLN1  
 PROJECT 06152  
 5/24/07 - MDS

EARTH EXCAVATION = 462 CU. YD.  
 FILL = 1231 CU. YD.  
 WASTE FROM PARK AVE. = 46 CU. YD.  
 FURNISHED EXCAVATION = 838 CU. YD.  
 ASSUME 25% SHRINKAGE



**VILLAGE OF CHATHAM - WALNUT STREET - PLAN & PROFILE**  
**STA. 35+00 TO STA. 40+00**