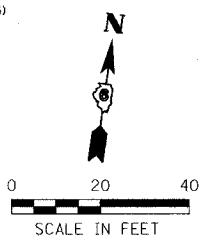


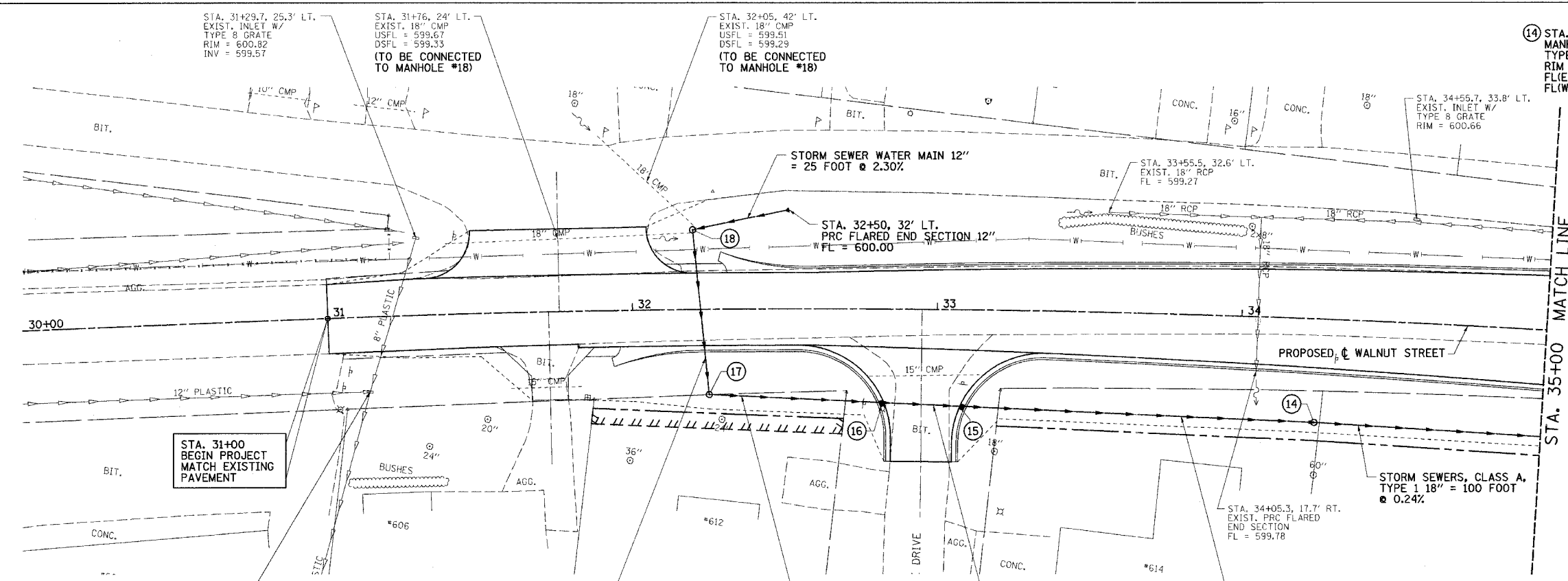
F.A.U. RTE.	SECTION	COUNTY	TOTAL SHEETS	SHEET NO.
8146	06-00029-00-TL	SANGAMON	67	26
STA. 30+00.00		TO STA. 35+00.00		
FED. ROAD DIST. NO.		ILLINOIS	FED. AID PROJECT #	
*HS-8146(1003)				



DATE	BY

DATE	BY

PLOT DATE = 4/27/2007  
 FILE NAME = J:\06152\DRAWINGS\06152PLN3.dgn  
 SCALE = Defaults  
 MODEL = Defaults  
 OPERATOR = Franky

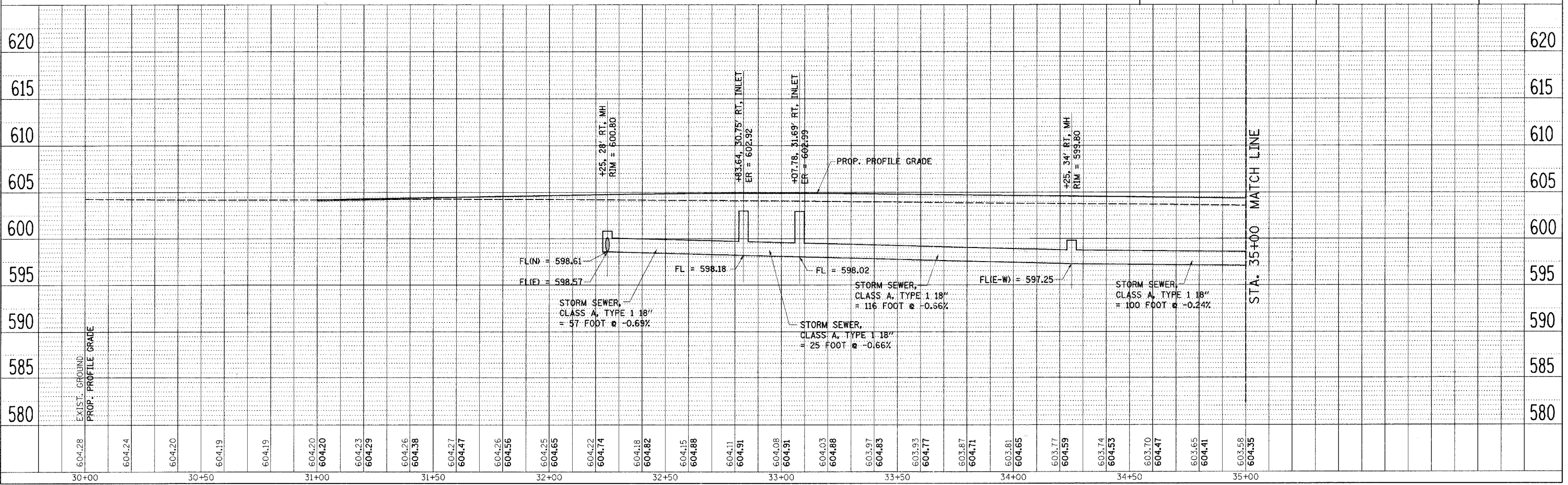


- 14 STA. 34+25, 34' RT. MANHOLES, TYPE A, 4'-DIA. TYPE 8 GRATE  
RIM = 599.80  
FL(E) = 597.25  
FL(W) = 597.25
- 15 STA. 33+07.78, 31.69' RT. INLETS, TYPE B, TYPE 3 FRAME AND GRATE  
ER = 602.99  
FL(E-W) = 598.02
- 16 STA. 32+83.64, 30.75' RT. INLETS, TYPE B, TYPE 3 FRAME AND GRATE  
ER = 602.92  
FL(E-W) = 598.18
- 17 STA. 32+25, 28' RT. MANHOLES, TYPE A, 4'-DIA., TYPE 8 GRATE  
RIM = 600.80  
FL(E) = 598.57  
FL(N) = 598.61
- 18 STA. 32+20, 26' LT. MANHOLES, TYPE A, 5'-DIA., TYPE 8 GRATE  
RIM = 601.80  
FL(W) = 599.33 (CMP)  
FL(NW) = 599.29 (CMP)  
FL(E) = 599.30  
FL(S) = 599.00  
(CMP CONNECTIONS INCIDENTAL TO MANHOLE)

LEGEND	
---	EXISTING R.O.W.
---	CONST. LIMITS
---	PROPOSED R.O.W.
	TEMP. CONST. EASEMENT

REVISION	DATE	BY
1	4/11/07	MML

GREENE & BRADFORD, INC. 1001 N. WASHINGTON ST., SUITE 200 SPRINGFIELD, ILLINOIS 62761 (618) 266-1111 FAX (618) 266-1112	COMPUTER FILE NO. 06152PLN3
	PROJECT 06152 4/27/07 - FAV



VILLAGE OF CHATHAM - WALNUT STREET - DRAINAGE PLAN & PROFILE  
 STA. 30+00 TO STA. 35+00