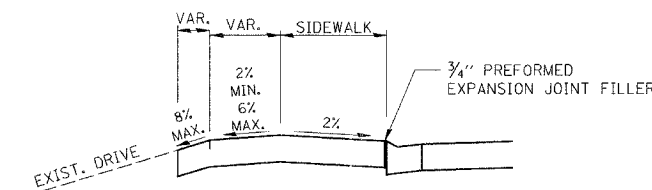
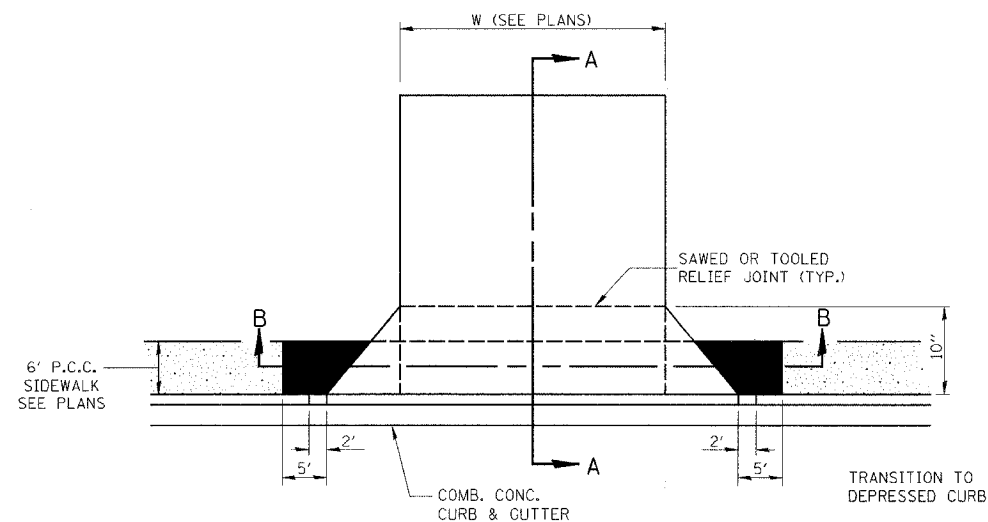


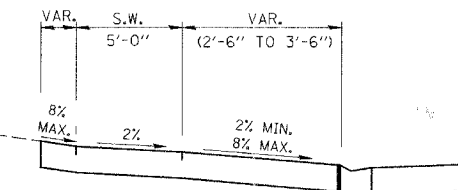
| F.A.I. RTE. | SECTION | COUNTY | TOTAL SHEETS | SHEET NO. |
|---------------------|----------------|----------------------------|--------------|-----------|
| 8146 | 06-00029-00-TL | SANGAMON | 67 | 39 |
| STA. | | TO STA. | | |
| FED. ROAD DIST. NO. | | ILLINOIS FED. AID PROJECT# | | |

*H5-8146(003)

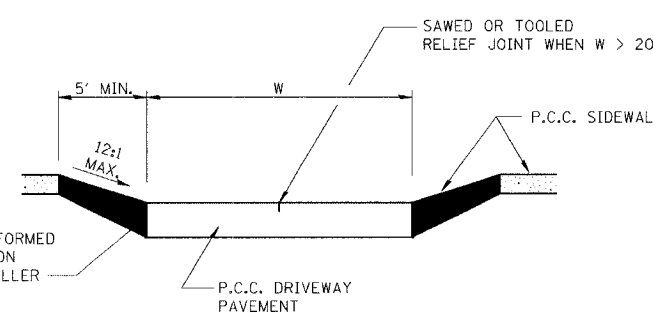


**DEPRESSED ENTRANCE*
SIDEWALK AT CURB
SECTION A-A**

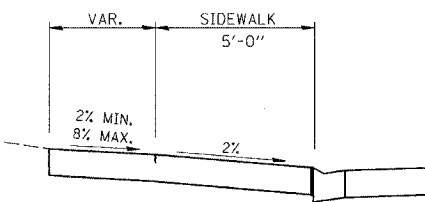
*(SEE X-SECTIONS FOR ENTRANCE PROFILE.)



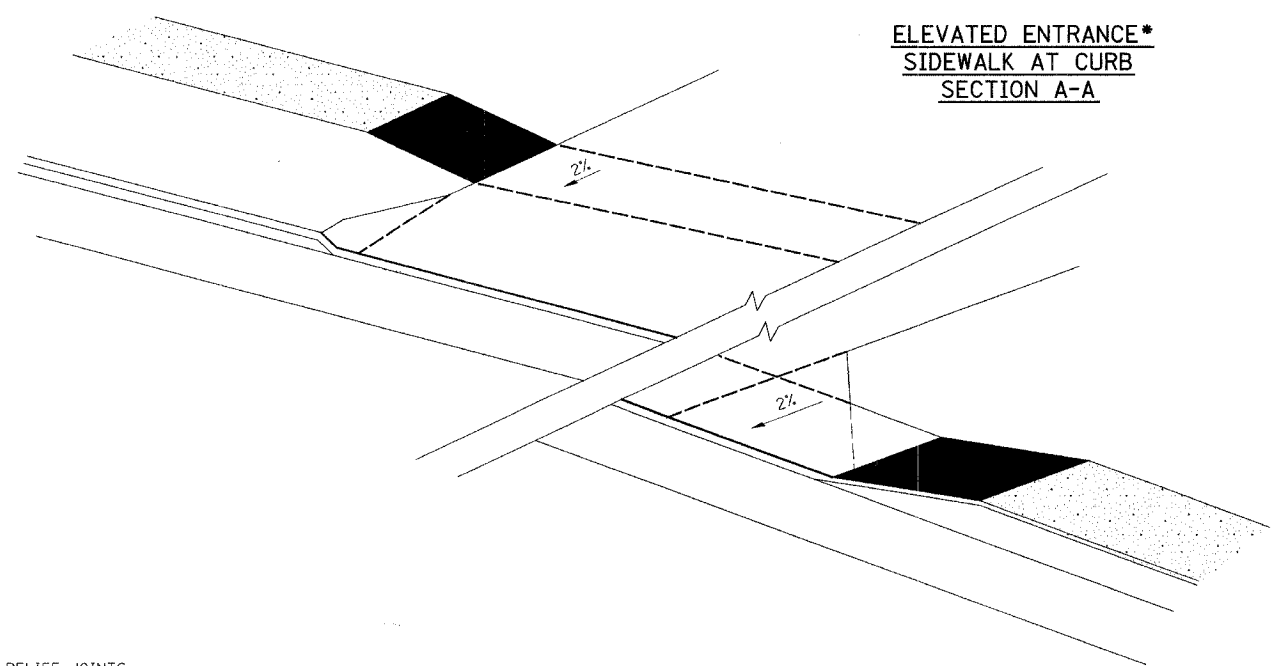
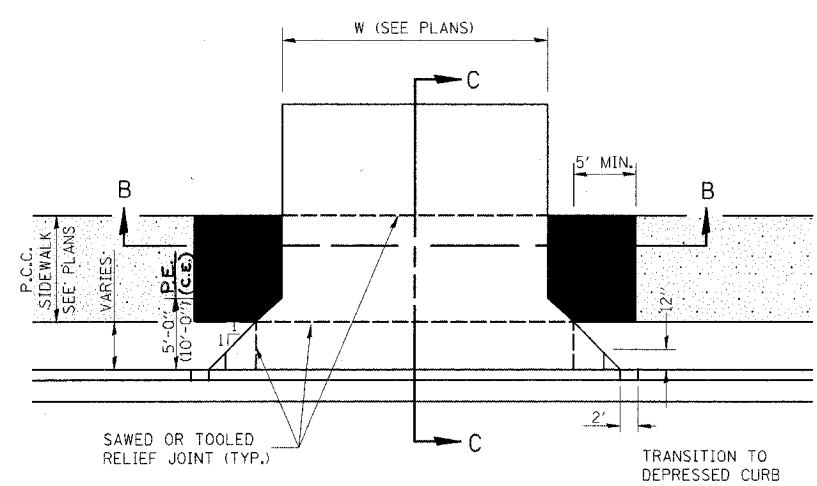
**ELEVATED ENTRANCE*
SIDEWALK 6'-6" BEHIND CURB
SECTION C-C**



SECTION B-B



**ELEVATED ENTRANCE*
SIDEWALK AT CURB
SECTION A-A**



- GENERAL NOTES:
- COST OF EXPANSION JOINTS AND RELIEF JOINTS SHALL BE INCLUDED IN THE COST OF THE PORTLAND CEMENT CONCRETE DRIVEWAY PAVEMENT 6" INCH.

PLOT DATE = 4/27/07
 FILE NAME = I:\ASSETS\DRAWINGS\06152DET.dwg
 PLOT SCALE = 20x/0.000 / IN.
 MODEL = Default
 OPERATOR = Franky

| REVISIONS | |
|-------------|---------|
| NAME | DATE |
| IDOT REVIEW | 4/11/07 |
| | |
| | |
| | |
| | |
| | |
| | |
| | |
| | |

ILLINOIS DEPARTMENT OF TRANSPORTATION
ENTRANCE DETAILS

VILLAGE OF CHATHAM
 SECTION 06-00029-00-TL
 SANGAMON COUNTY
 WALNUT ST. / PARK AVE. IMPROVEMENTS

SCALE: VERT. _____
 HORIZ. _____
 DATE: 2/16/07

DRAWN BY: SUTHEARD
 CHECKED BY: BOTT

GREENE & BRADFORD, INC.
 OF SPRINGFIELD

COMPUTER FILE NO.
 06152DET

PROJECT 06152
 4/27/07 - FAV