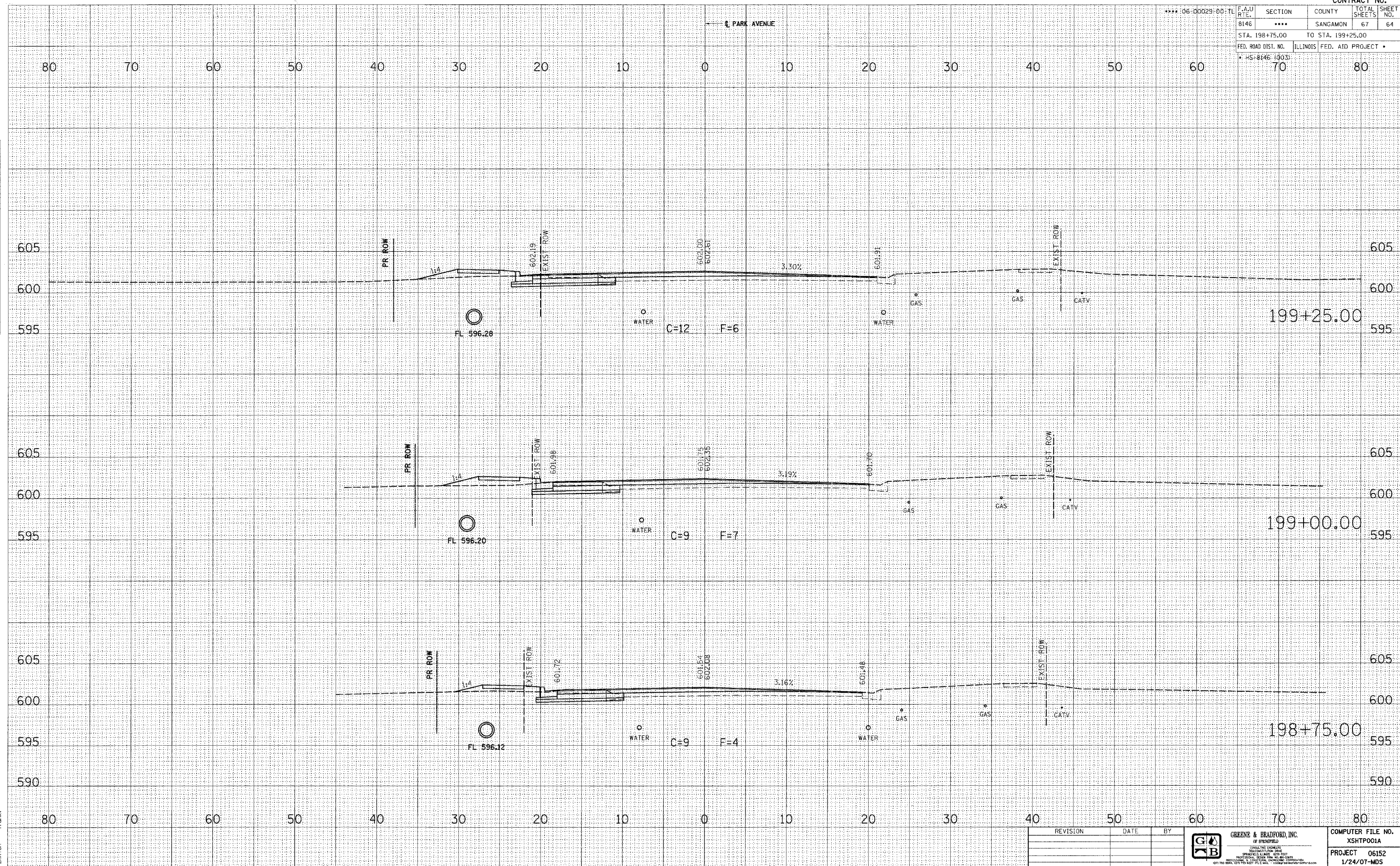


F.A.U. RTE.	SECTION	COUNTY	TOTAL SHEETS	SHEET NO.
8146	****	SANGAMON	67	64
STA. 198+75.00		TO STA. 199+25.00		
FED. ROAD DIST. NO.		ILLINOIS	FED. AID PROJECT	
* HS-8146 (1003)				



FINAL SURVEY	BY	DATE
SUPERVISED		
NOTE BOOK		
NO.		

ORIGINAL SURVEY	BY	DATE
SUPERVISED		
NOTE BOOK		
NO.		

PLOT DATE = 4/27/2007  
 PLOT SCALE = 1"=40'-0"  
 MODEL = Defaul  
 OPERATOR = Franky

REVISION	DATE	BY

**GREENE & BRADFORD, INC.**  
 OF SPRINGFIELD  
 CONSULTING ENGINEERS  
 1000 N. GARDNER ST., SUITE 200  
 SPRINGFIELD, ILLINOIS 62761-1000  
 PHONE: 217-223-8800 FAX: 217-223-8801  
 WWW.GREENE-AND-BRADFORD.COM

COMPUTER FILE NO.  
 XSHTPOOLIA  
 PROJECT 06152  
 1/24/07-MDS

**PARK AVENUE CROSS SECTIONS**