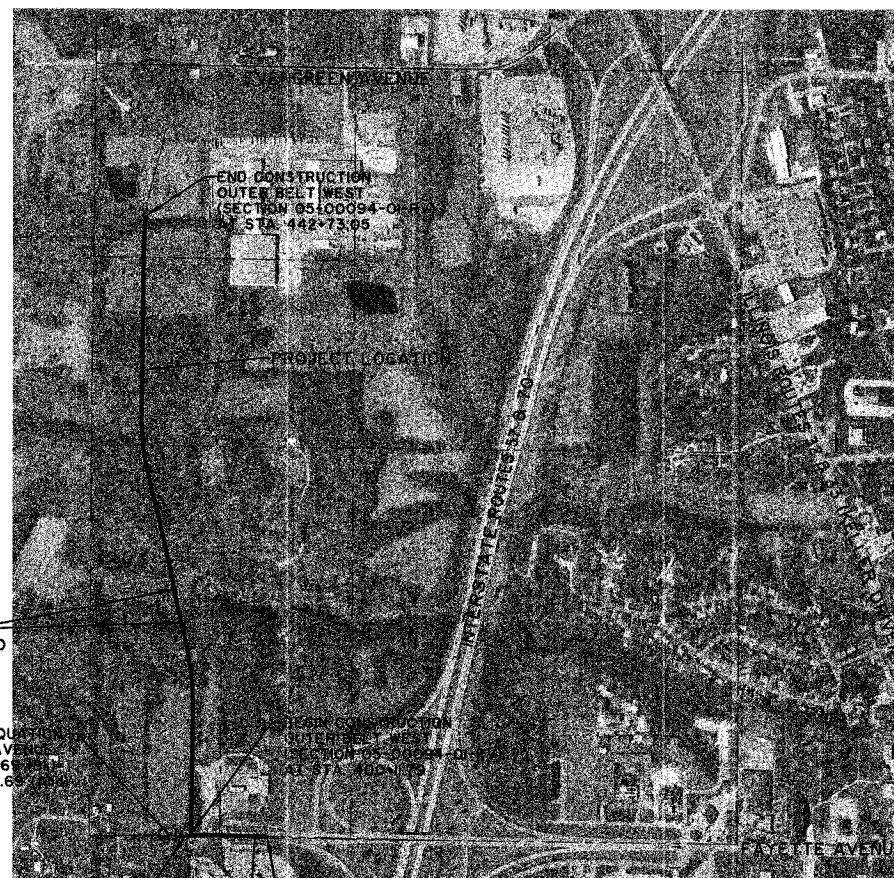


STATE OF ILLINOIS  
DEPARTMENT OF TRANSPORTATION  
**OUTER BELT WEST**  
**FAU 8384**

ROUTE NO.	SECTION	COUNTY	TOTAL SHEETS	SHEET NO.
FAU 8384	*	EFFINGHAM	95	1
FED. ROAD DIST. NO. 7		ILLINOIS	FED. AID PROJECT- HPP-409(014)	

FOR INDEX OF SHEETS  
SEE SHEET 2

HIGH PRIORITY SAFE TEA-LU  
SECTION 05-00094-01-PV  
SECTION 03-00098-00-BR  
PROJECT NO. HPP-4091(014)  
CITY OF EFFINGHAM  
EFFINGHAM COUNTY, ILLINOIS  
C-97-044-07



**SCALES**

PLAN	0 50 100
PROFILE (HORIZONTAL)	0 50 100
PROFILE (VERTICAL)	0 5 10
CROSS SECTIONS (HORIZONTAL)	0 10 20
CROSS SECTIONS (VERTICAL)	0 5 10

**J.U.L.I.E.**  
JOINT UTILITY LOCATION INFORMATION FOR EXCAVATION  
1-800-892-0123

**UTILITY NOTE**

THE LOCATIONS OF THOSE BURIED AND ABOVEGROUND UTILITIES SHOWN ARE APPROXIMATE, ARE SHOWN FOR CONTRACTOR INFORMATIONAL USE ONLY, AND ARE NOT TO BE REFERENCED FOR CONSTRUCTION PURPOSES. THE IMPLIED PRESENCE OR ABSENCE OF UTILITIES IS NOT TO BE CONSTRUED BY THE OWNER, ENGINEER, CONTRACTOR, OR SUBCONTRACTORS TO BE AN ACCURATE AND COMPLETE REPRESENTATION OF UTILITIES THAT MAY OR MAY NOT EXIST ON THE CONSTRUCTION SITE. BURIED AND ABOVEGROUND UTILITY LOCATION, IDENTIFICATION, AND MARKING ARE THE SOLE RESPONSIBILITY OF THE CONTRACTOR. REROUTING, DISCONNECTION, PROTECTION, ETC. OF ANY UTILITIES MUST BE COORDINATED BETWEEN THE CONTRACTOR, UTILITY COMPANY, AND OWNER. SITE SAFETY, INCLUDING THE AVOIDANCE OF HAZARDS ASSOCIATED WITH BURIED AND ABOVEGROUND UTILITIES, REMAIN THE SOLE RESPONSIBILITY OF THE CONTRACTOR. CONTRACTOR MUST CONTACT J.U.L.I.E. 48 HOURS PRIOR TO THE BEGINNING OF CONSTRUCTION.

FUNCTIONAL CLASSIFICATION - COLLECTOR  
ADT - 5143 vpd  
DESIGN SPEED - 45 MPH

Contract No. **95503**

APPROVED 3-29 20.07  
*Steve Womiller*  
CITY ENGINEER

PASSED 4-10 20.07  
*Maurice Kastl*  
DISTRICT SEVEN ENGINEER OF LOCAL ROADS & STREETS

Releasing For Bid Based on Limited Review 4/10 20.07  
*Christina M. Keesh*  
DEPUTY DIRECTOR OF HIGHWAYS, REGION FOUR ENGINEER

STATE OF ILLINOIS  
DEPARTMENT OF TRANSPORTATION

© Copyright Hanson Professional Services Inc. 2007

**HANSON**

OUTER BELT WEST  
SECTION 05-00094-01-PV  
SECTION 03-00098-00-BR

PLANS DATED:  
March 30, 2007

MILANO & GRUNLOH ENGINEERS, LLC  
14 WEST WASHINGTON  
P.O. BOX 897  
EFFINGHAM, ILLINOIS 62401  
Phone: (217) 347-7652  
(800) 677-2714  
Fax #: (217) 342-3433  
Web Address: www.mgengineers.com  
Design Firm #: 04-00308

Charles A. Grunloh  
REGISTERED PROFESSIONAL ENGINEER  
03-20-07  
My License Expires 11-30-07

File name: S:\DWG\05\05014\dwg\Title 9h1.dwg  
Plot date: 03/30/07 at 12:00

**LOCATION MAP**  
CITY OF EFFINGHAM

**LENGTH OF PROJECT**  
OUTER BELT WEST = 4053.26 Feet (0.77 Mile)  
BRIDGE CONSTRUCTION = 208.00 Feet (0.04 Mile)  
FAYETTE AVENUE = 585.33 Feet (0.11 Mile)  
TOTAL = 4844.59 Feet (0.92 Mile)