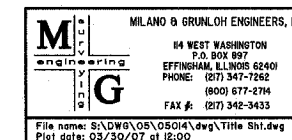


| ROUTE NO. | SECTION | COUNTY | TOTAL SHEETS | SHEET NO. |
|-----------------------|----------|-------------------------------|--------------|-----------|
| FAU 8384 | * | EFFINGHAM | 95 | 3 |
| FED. ROAD DIST. NO. 7 | ILLINOIS | FED. AID PROJECT- HPP-409(04) | | |

* SECTION 05-00094-01-PV
SECTION 03-00098-00-BR
CONTRACT #95503

STANDARDS

| | |
|-----------|---|
| 000001-04 | Standard Symbols, Abbreviations, and Patterns |
| 280001-03 | Temporary Erosion Control Systems |
| 420001-06 | Pavement Joints |
| 420401-05 | Bridge Approach Pavement |
| 420601-04 | 7.2m (24') PCC Pavement |
| 420701-01 | Pavement Fabric |
| 424001-04 | Curb Ramps for Sidewalks |
| 515001-02 | Name Plate for Bridges |
| 542301-01 | Precast Reinforced Concrete Flared End Section |
| 542606 | Reinforced Concrete Pipe Tee |
| 602301-01 | Inlet, Type A |
| 602306-01 | Inlet, Type B |
| 602401-01 | Manhole, Type A |
| 602601-01 | Precast Reinforced Concrete Flat Slab Top |
| 602701-01 | Manhole Steps |
| 604001-02 | Frame and Lid, Type I |
| 604006-02 | Frame and Grate, Type 3 |
| 604011-02 | Frame and Grate, Type 3V |
| 604036-01 | Grate, Type 8 |
| 604041-01 | Frame and Grate, Type 9 |
| 604066-01 | Frame and Lid, Type 15 |
| 606001-03 | Concrete Curb and Combination Concrete Curb and Gutter |
| 606306-02 | Corrugated PC Concrete Medians |
| 701301-02 | Lane Closure 2L, 2W Short Time Operations |
| 701306-01 | Lane Closure 2L, 2W Slow Moving Operations - Day Only for Speeds \geq 45 MPH |
| 701311-02 | Lane Closure 2L, 2W Moving Operations - Day Only |
| 701326-02 | Lane Closure 2L, 2W Pavement Widening for Speeds > 45 MPH |
| 701501-03 | Urban Lane Closure, 2L 2W Undivided |
| 702001-06 | Traffic Control Devices |
| 720001 | Sign Panel Mounting Details |
| 720006-01 | Sign Panel Erection Details |
| 780001-01 | Typical Pavement Markings |



STANDARDS SHEET
OUTER BELT WEST
CITY OF EFFINGHAM, ILLINOIS