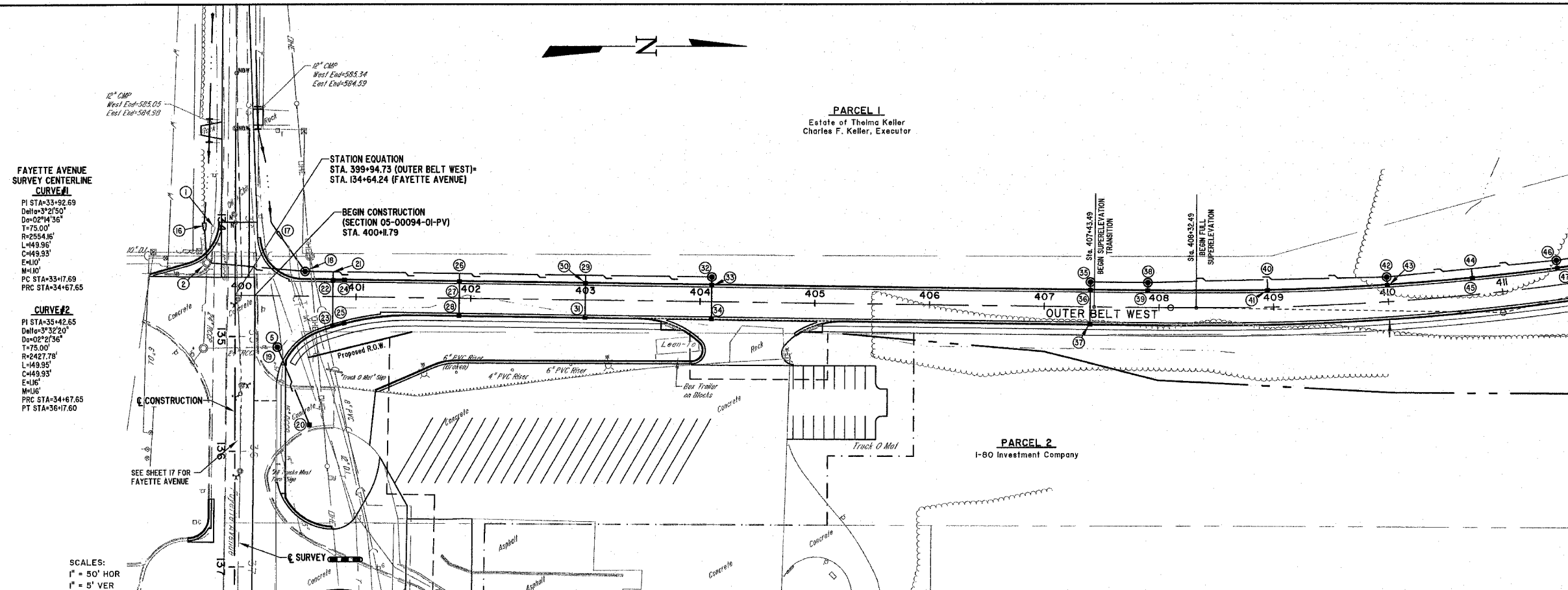


ROUTE NO.	SECTION	COUNTY	TOTAL SHEETS	SHEET NO.
FAU 8384	#	EFFINGHAM	95	17

FED. ROAD DIST. NO. 7 ILLINOIS FED. AID PROJECT- IFF-409(04)
 * SECTION 05-00094-01-PV
 SECTION 03-00098-00-BR
 CONTRACT #95503



FAYETTE AVENUE SURVEY CENTERLINE CURVE #1
 PI STA=33+92.69
 Delta=3°27'50"
 Do=0°24'36"
 T=75.00'
 R=2594.16'
 L=49.93'
 C=49.93'
 E=10'
 M=10'
 PC STA=33+17.69
 PTC STA=34+67.65

CURVE #2
 PI STA=35+42.65
 Delta=3°32'20"
 Do=0°24'36"
 T=75.00'
 R=2594.16'
 L=49.93'
 C=49.93'
 E=10'
 M=10'
 PC STA=34+67.65
 PT STA=36+17.60

OUTER BELT WEST CURVE #1
 PI STA=41+00.01
 Delta=14°24'42"
 Do=0°30'00"
 T=283.77'
 R=2231.63'
 L=576.47'
 C=576.47'
 E=8.23'
 M=8.10'
 PC STA=40+10.24
 PT STA=43+06.71
 M.S.E.=2.50X
 ATTAIN: STA 407+43.49 TO STA 408+32.49
 STA 413+33.00 TO STA 414+22.00

BM #2
 CHISELED SQUARE IN CONCRETE BASE OF THE LIGHT POLE AT PETRO TRUCK ENTRANCE
 ELEVATION=584.74

BM #3
 TOP NORTHWEST CORNER OF THE NORTHERN MOST I-BEAM ALONG THE WEST SIDE OF TRUCKOMAT PAVEMENT AT 59.5' RI, Sta. 403+43.4
 ELEVATION=592.18

MILANO & GRUNDH ENGINEERS, LLC
 14 WEST WASHINGTON
 P.O. BOX 897
 EFFINGHAM, ILLINOIS 62401
 Phone: (217) 347-7282
 (217) 347-3774
 Fax #: (217) 342-3433
 Web Address: www.mgengineers.com
 Design Firm #: 184-00308
 File name: S:\DWG\05\0504\dwg\Street Plans.dwg
 Plot date: 03/30/07 at 12:00 P.M. F.S. 865,584

SCALES:
 1" = 50' HOR
 1" = 5' VER

