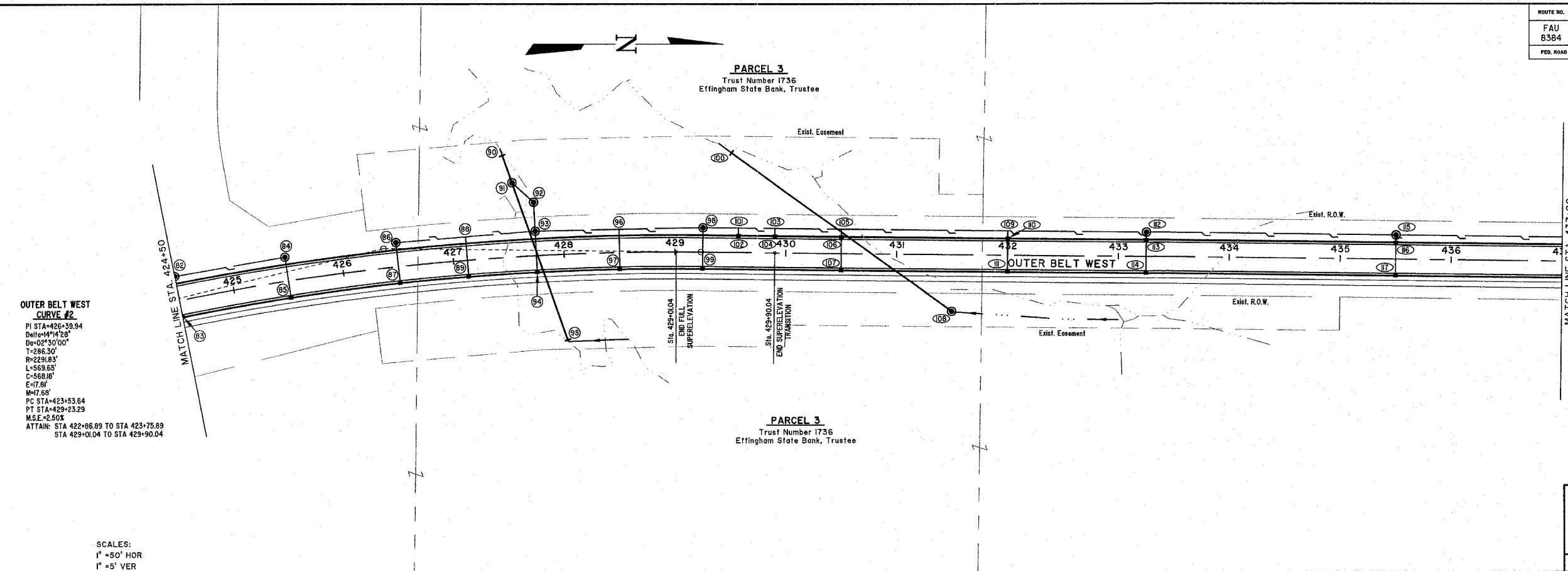


ROUTE NO.	SECTION	COUNTY	TOTAL SHEETS	SHEET NO.
FAU 8384	#	EFFINGHAM	95	20

FED. ROAD DIST. NO. 7
 ILLINOIS
 FED. AID PROJECT-199-4080(4)
 * SECTION 05-00094-01-PV
 SECTION 03-00098-00-BR
 CONTRACT #95503



OUTER BELT WEST CURVE #2
 P1 STA=426+39.94
 Delta=141°28'
 D=0°2'30"00"
 T=286.30'
 R=2291.83'
 L=563.85'
 C=568.86'
 E=17.61'
 M=17.68'
 PC STA=423+53.64
 PT STA=429+23.29
 M.S.E.=2.50%
 ATTAIN: STA 422+66.89 TO STA 423+75.89
 STA 429+00.04 TO STA 429+90.04

- BM #9**
RAILROAD SPIKE IN TREE
AT 30'R, Sta. 426+30
ELEVATION=562.65
- BM #10**
RAILROAD SPIKE IN TREE
AT 60'R, Sta. 429+70
ELEVATION=592.69
- BM #11**
RAILROAD SPIKE IN TREE
AT 70'L, Sta. 432+45
ELEVATION=593.44
- BM #12**
RAILROAD SPIKE IN TREE
AT 40'R, Sta. 435+20
ELEVATION=594.58

MILANO & GRUNDY ENGINEERS, LLC
 84 WEST WASHINGTON
 P.O. BOX 897
 EFFINGHAM, ILLINOIS 62401
 Phone: (817) 347-7282
 (800) 677-5774
 Fax #: (817) 342-3433
 Web Address: www.mgengineers.com
 Design Firm #: 184-00308
 File name: S:\DWS\05\05014\Draw\Street Plans.dwg
 Plot date: 05/30/07 at 10:00 7.8.655.884

SCALES:
 1" = 50' HOR
 1" = 5' VER

