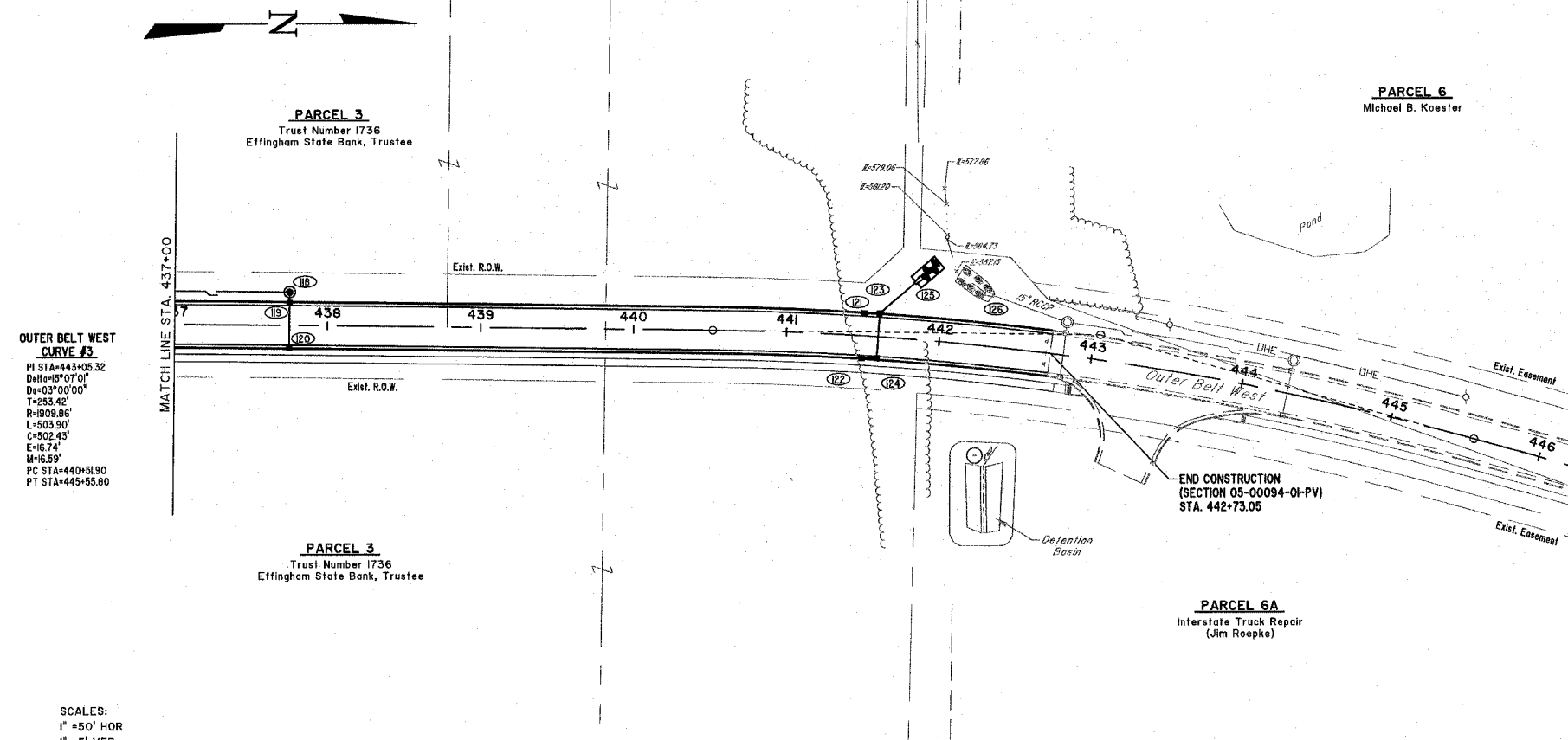


ROUTE NO.	SECTION	COUNTY	TOTAL SHEETS	SHEET NO.
FAU 8394	*	EFFINGHAM	95	21
FED. ROAD DIST. NO. 7		CLINING	FED. AID PROJECT- HPY-40902(4)	

\* SECTION 05-00094-01-PV  
SECTION 03-00098-00-BR  
CONTRACT #95503



**OUTER BELT WEST CURVE #3**  
 PI STA=443+05.32  
 Del=16°07'00"  
 De=03°00'00"  
 T=253.42'  
 R=1909.86'  
 L=503.90'  
 C=502.43'  
 E=16.74'  
 M=16.59'  
 PC STA=440+51.90  
 PT STA=445+55.80

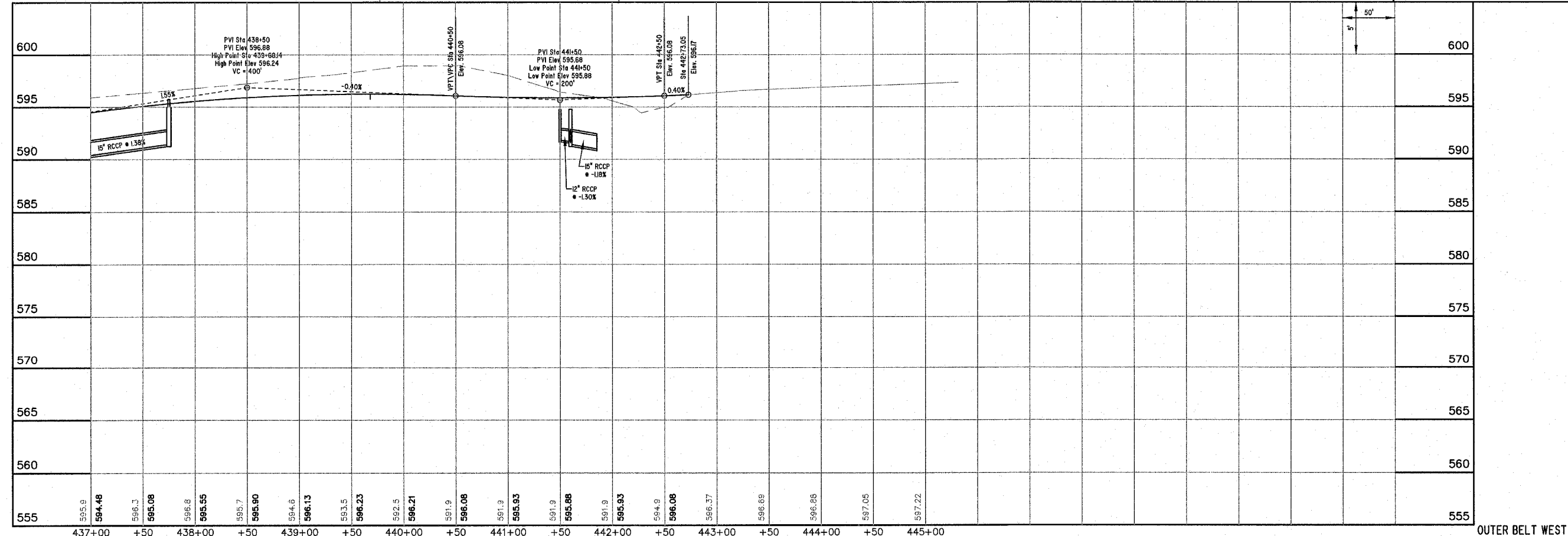
**BM #12**  
RAILROAD SPIKE IN TREE  
AT 40' RI, Sta. 435+20  
ELEVATION=594.56

**BM #13**  
TOP OF IRON PIN  
(CONTROL POINT #4122)  
35' L.T. STA. 442+67.35  
ELEVATION=595.50

**MILANO & GRUNDLOH ENGINEERS, LLC**  
 84 WEST WASHINGTON  
 P.O. BOX 887  
 EFFINGHAM, ILLINOIS 62401  
 Phone: (217) 347-7262  
 (800) 577-5794  
 Fax #: (217) 342-3433  
 Web Address: www.mpeengineers.com  
 Design Firm #: 04-00308

File name: S:\DWG\05\0504\dwg\Street Plans.dwg  
 Plot date: 03/30/07 at 12:00

SCALES:  
1" = 50' HOR  
1" = 5' VER



OUTER BELT WEST