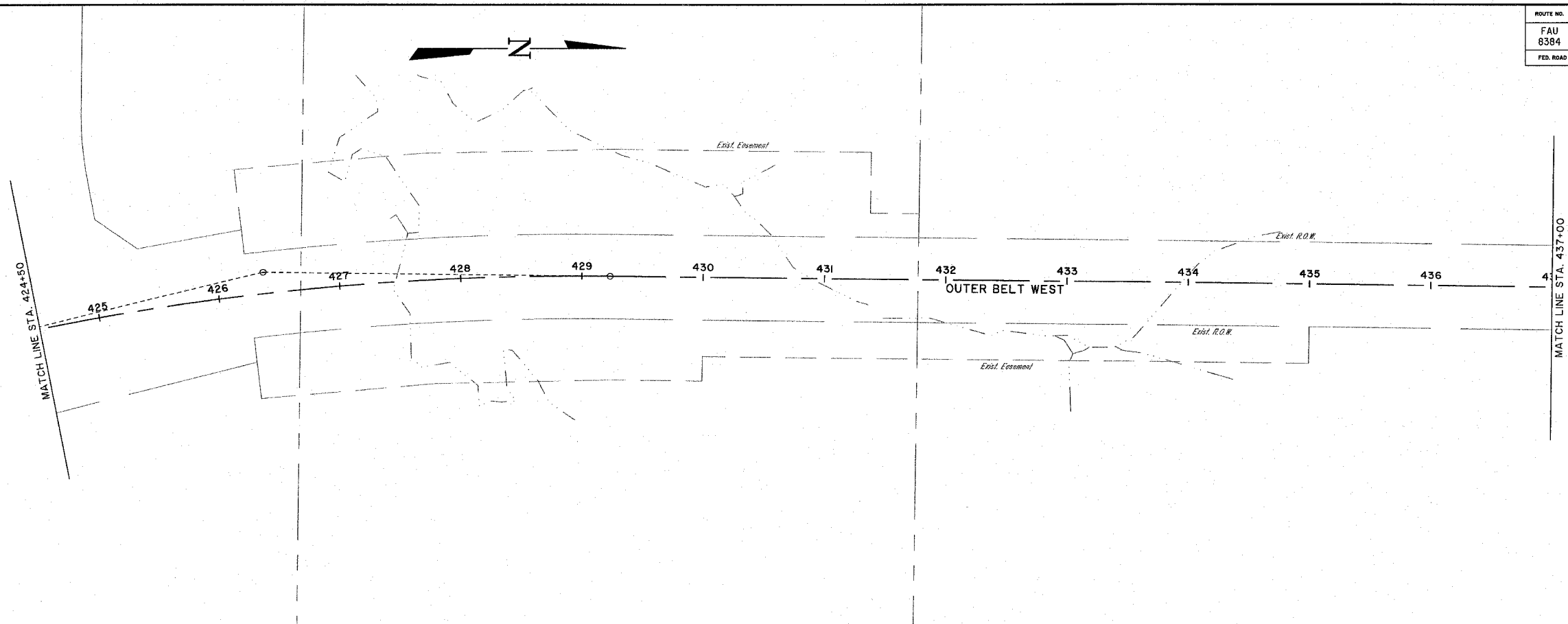


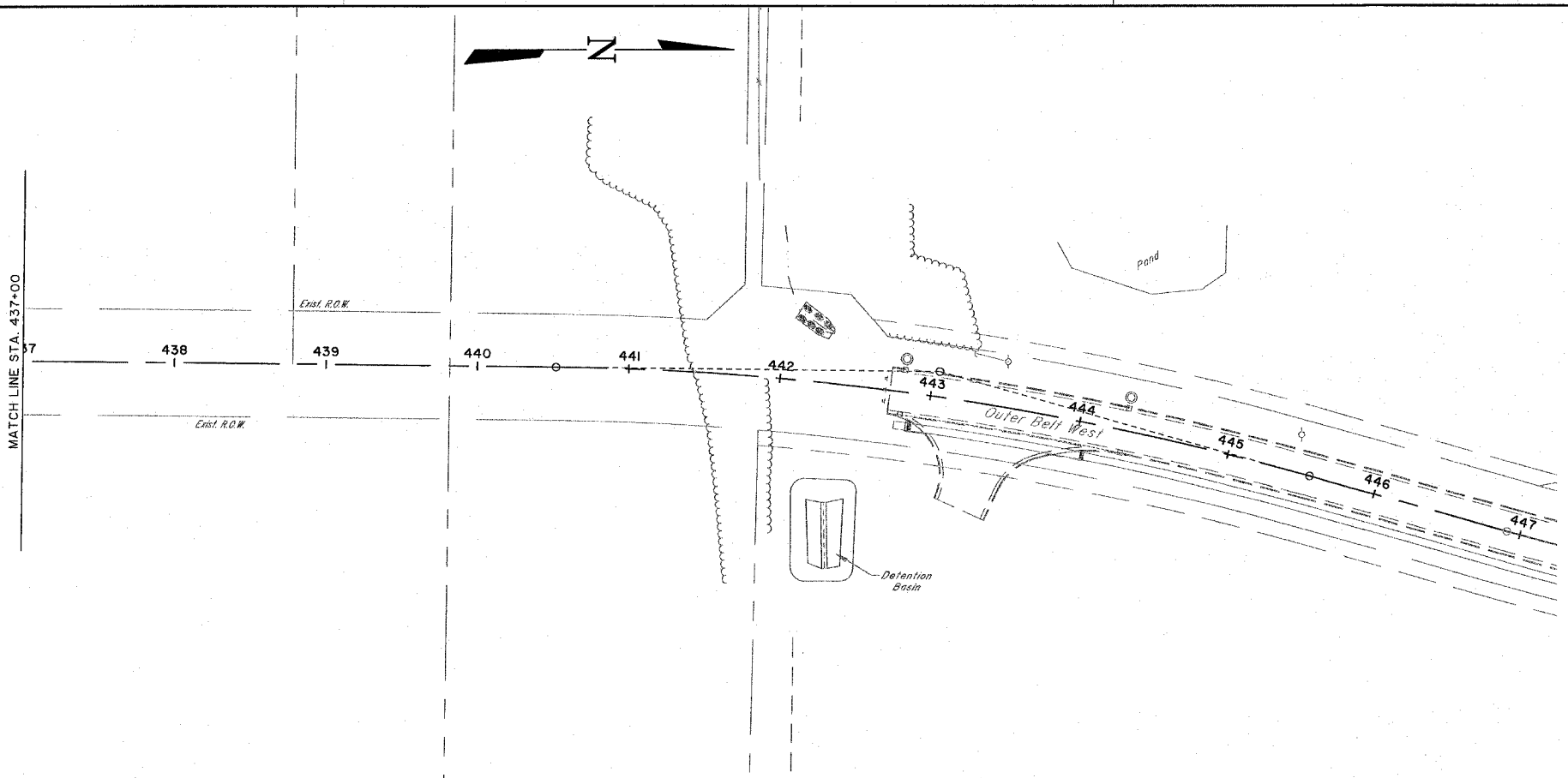
ROUTE NO.	SECTION	COUNTY	TOTAL SHEETS	SHEET NO.
FAU 6384	#	EFFINGHAM	95	24
FED. ROAD DIST. NO. 7	ILLINOIS	FED. AID PROJECT - HPP-408004		

* SECTION 05-00094-01-PV
SECTION 03-00098-00-BR
CONTRACT #95503

**OUTER BELT WEST
CURVE #2**
PI STA=426+39.94
Delta=14°14'28"
De=02°30'00"
T=286.30'
R=229.63'
L=569.65'
C=568.18'
E=17.81'
M=17.68'
PC STA=423+53.64
PT STA=429+23.29



**OUTER BELT WEST
CURVE #3**
PI STA=443+05.32
Delta=15°07'01"
De=03°00'00"
T=253.42'
R=302.86'
L=503.90'
C=502.43'
E=16.74'
M=16.50'
PC STA=440+51.90
PT STA=445+55.80



LEGEND

	PAVEMENT REMOVAL & CURB AND GUTTER REMOVAL
	BITUMINOUS SHOULDER REMOVAL
	BUILDING STRUCTURE REMOVAL

MILANO & GRUNLOH ENGINEERS, LLC
14 WEST WASHINGTON
P.O. BOX 857
EFFINGHAM, ILLINOIS 62401
PHONE: (217) 347-7262
(800) 677-2774
FAX #: (217) 342-3433

REMOVAL PLAN
OUTER BELT WEST
STA 424+50 TO STA 447+00
CITY OF EFFINGHAM, ILLINOIS

File name: S:\DWG\05\0504\veg\Removal Plans.dwg
Plot date: 03/30/07 at 12:00
FR 555,584