

WATERWAY INFORMATION

Drainage Area = 2.22 Sq. Mi. Low Grade Elev. 550.66 @ Sta. 416+70.00

Flood	Freq. Yr.	Q C.F.S.	Opening Sq. Ft.		Nat. H.W.E.	Head - Ft.		Headwater El.	
			Exist.	Prop.		Exist.	Prop.	Exist.	Prop.
Design	30	2195	N/A	460	534.60	N/A	0.29	534.60	534.89
Base	100	2999	N/A	560	535.17	N/A	0.32	535.17	535.49
Overtopping									
Max. Calc.	500	4113	N/A	640	535.82	N/A	0.40	535.82	536.22

INDEX OF SHEETS

1.	General Plan and Elevation
2.	General Notes
3.	Top of Slab Elevations (Sheet 1)
4.	Top of Slab Elevations (Sheet 2)
5.	Top of South Approach Elevations (Sheet 1)
6.	Top of North Approach Elevations (Sheet 2)
7.	Superstructure
8.	Superstructure Details (Sheet 1)
9.	Superstructure Details (Sheet 2)
10.	Type L Aluminum Railing
11.	Drainage Scupper, DS-12
12.	Diaphragm Details
13.	Framing Plan
14.	63" PPC Bulb T-Beam
15.	63" PPC Bulb T-Beam Details
16.	South Abutment
17.	North Abutment
18.	Pier
19.	Steel H-Piles
20.	Bar Splicer Assembly Details
21.	Borings (Sheet 1)
22.	Borings (Sheet 2)
23.	Borings (Sheet 3)

TRIBUTARY TO LITTLE WABASH RIVER
BUILT BY
EFFINGHAM COUNTY
SECTION 03-00098-00-BR
LOCAL ROAD - STA. 415+66
STRUCTURE NO. 025-6009 - LOADING HS20

NAME PLATE

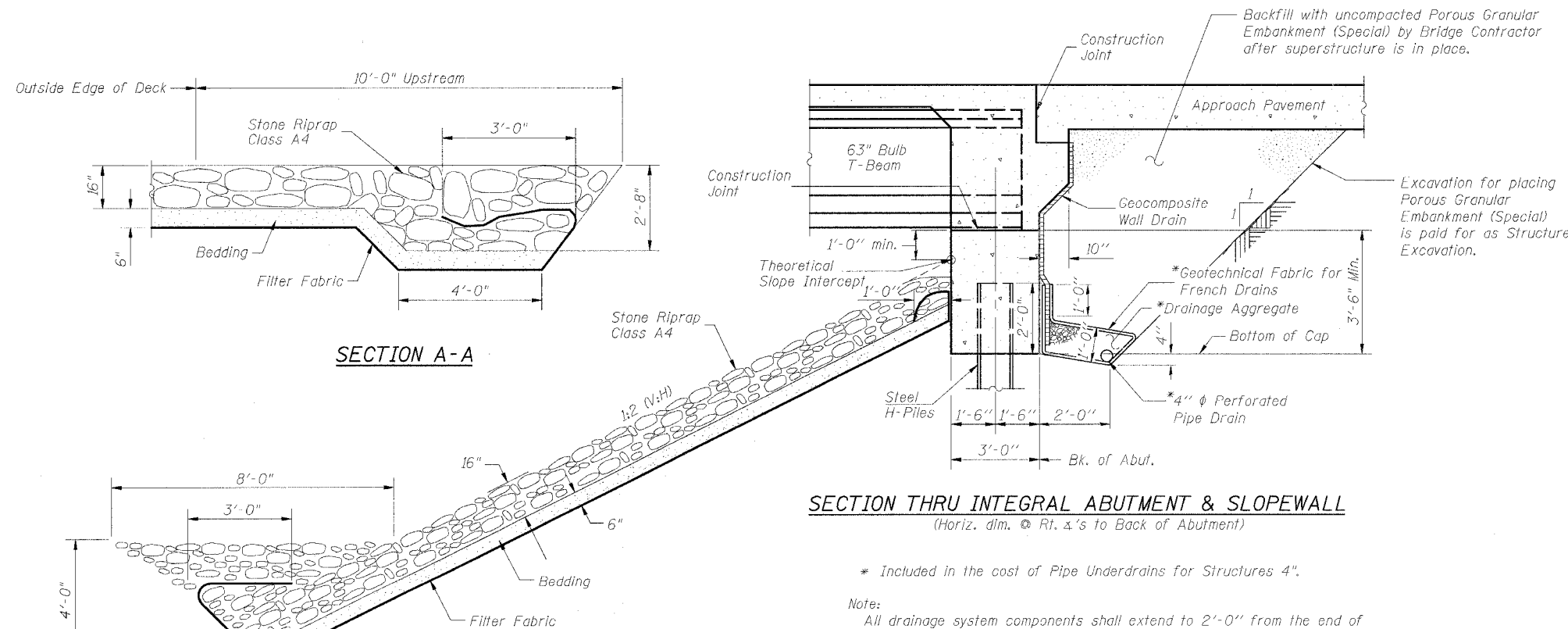
See Std. 515001

GENERAL NOTES

- Reinforcement bars shall conform to the requirements of ASTM A 706 Gr 60 (IL Modified). See Special Provisions
- Reinforcement bars designated (E) shall be epoxy coated.
- Layout of slope protection system may be varied in the field to suit ground conditions as directed by the Engineer.
- The embankment configuration shown shall be the minimum that must be placed, compacted and allowed to settle for 30 days prior to construction of the abutments.
- The Contractor shall drive test piles to 110% of the nominal required bearing specified in production locations at substructures specified or approved by the Engineer before ordering the remainder of piles.
- In lieu of the hammer selection criteria and use of the FHWA Modified Gates formula specified in Section 512 of the Standard Specifications, the Contractor shall conduct a wave equation analysis to establish the driving criteria at all pile foundations which specify a nominal required bearing above 600 kips. The analysis and calculations shall be submitted to the Engineer for approval.
- All embedded and separate bearing plates, side retainers, anchor bolts, nuts, washers and pintles shall be galvanized according to AASHTO M111 or M232 (as applicable).

TOTAL BILL OF MATERIAL

ITEM	UNIT	SUPER	SUB	TOTAL
Porous Granular Embankment (Special)	Cu. Yd.	-	195	195
Stone Riprap, Class A4	Sq. Yd.	-	782	782
Filter Fabric	Sq. Yd.	-	782	782
Structure Excavation	Cu. Yd.	-	369	369
Floor Drains	Each	4	-	4
Concrete Structures	Cu. Yd.	-	89.9	89.9
Concrete Superstructure	Cu. Yd.	336.5	-	336.5
Bridge Deck Grooving	Sq. Yd.	647	-	647
Concrete Encasement	Cu. Yd.	-	12.6	12.6
Protective Coat	Sq. Yd.	971	-	971
Furnishing and Erecting Precast Prestressed Concrete Bulb T-Beams 63"	Foot	1030	-	1030
Reinforcement Bars, Epoxy Coated	Pounds	62540	11490	74030
Bar Splicers	Each	62	-	62
Aluminum Railing, Type L	Foot	206	-	206
Furnishing Steel Piles, HP12x74	Foot	-	590	590
Furnishing Steel Piles, HP12x84	Foot	-	544	544
Driving Piles	Foot	-	1134	1134
Test Pile Steel, HP 12x74	Each	-	2	2
Test Pile Steel, HP 12x84	Each	-	1	1
Name Plates	Each	1	-	1
Geocomposite Wall Drains	Sq. Yd.	-	104	104
Pipe Underdrains for Structures 4"	Foot	-	166	166
Drainage Scupper, DS-12	Each	2	-	2



SECTION THRU INTEGRAL ABUTMENT & SLOPEWALL
(Horiz. dim. @ Rt. Δ's to Back of Abutment)

* Included in the cost of Pipe Underdrains for Structures 4".

Note:
All drainage system components shall extend to 2'-0" from the end of each wingwall except an outlet pipe shall extend until intersecting with the side slope. At the South Abutment, pipe shall wrap around wingwalls and intersect slope in front of the Abutment. The pipes shall drain into concrete headwalls. (See Article 601.05 of the Standard Specifications and Highway Standard 601101).

GENERAL NOTES
OUTER BELT WEST OVER TRIBUTARY
TO LITTLE WABASH RIVER
LOCAL ROAD SEC. 03-00098-00-BR
EFFINGHAM COUNTY
STATION 415+66.00
STRUCTURE NO. 025-6009

© Copyright Hanson Professional Services Inc. 2007



JOB NO.

05S2071

DATE

03/29/07

03/29/07, INF, AM
05/05/07, C5, 207, CAD, DD, Struct, Model, Final, Plan, App
LAYOUT: MMW 12/20/07
DRAWN: DAP 01/12/07
REVIEWED: JUT 01/15/07