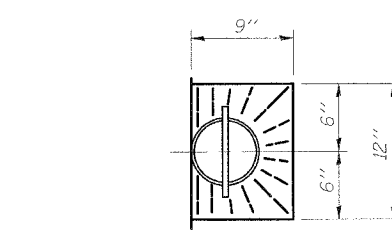
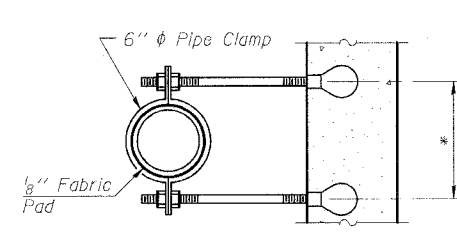


SECTION THRU PARAPET
 **For insert locations See sheet 14 of 23.

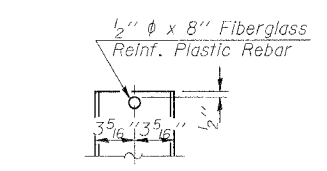
TOP PLAN
 (Showing Aluminum Tube)



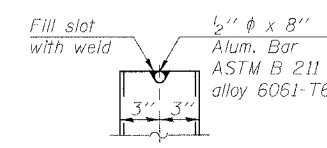
TOP PLAN



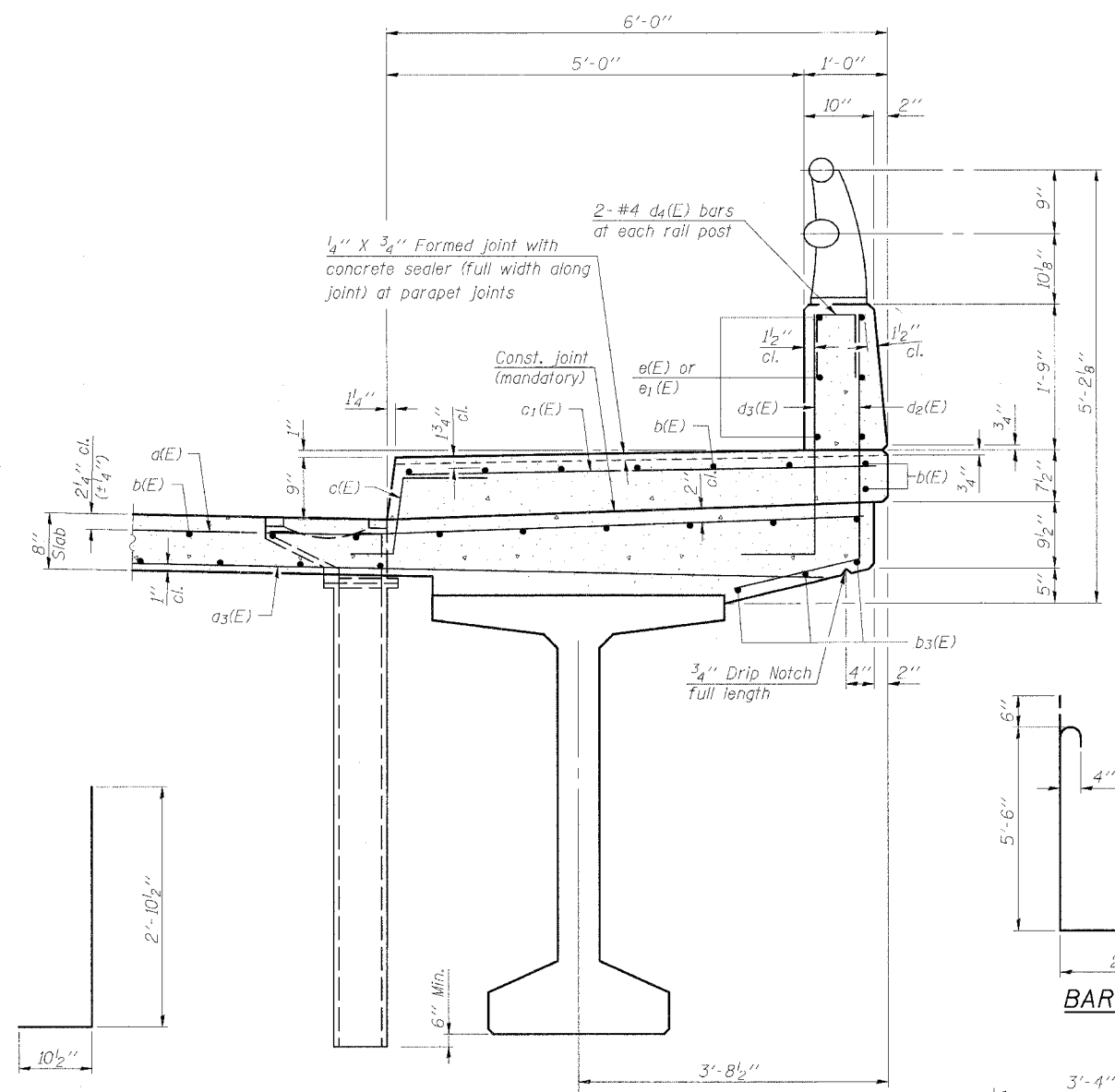
SECTION A-A
 * Dimension as required by Pipe Clamp



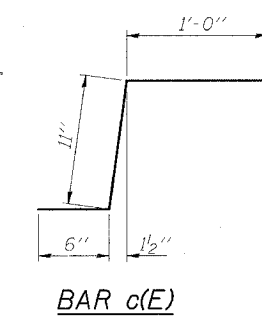
FIBERGLASS PIPE



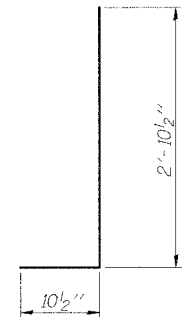
ALUMINUM TUBE



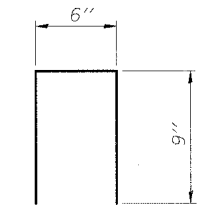
SECTION THRU SIDEWALK



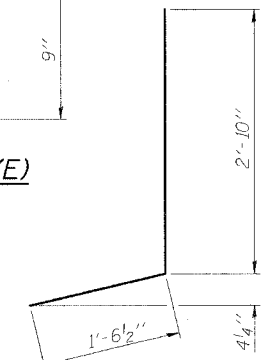
BAR c(E)



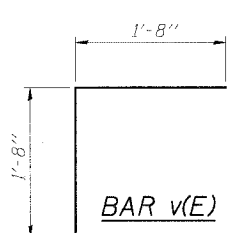
BAR d3(E)



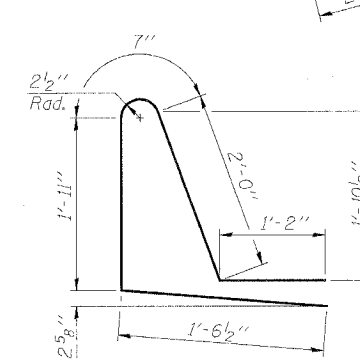
BAR d4(E)



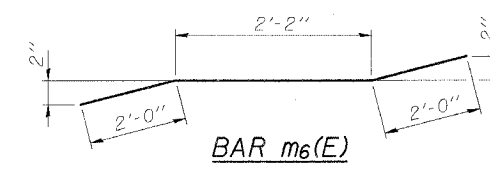
BAR d2(E)



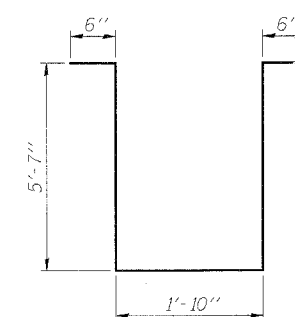
BAR v(E)



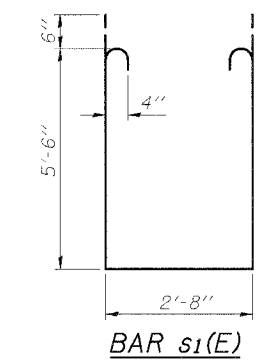
BAR d1(E)



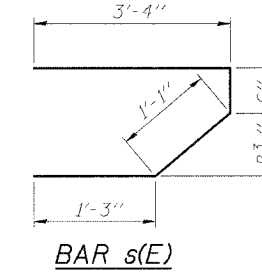
BAR m6(E)



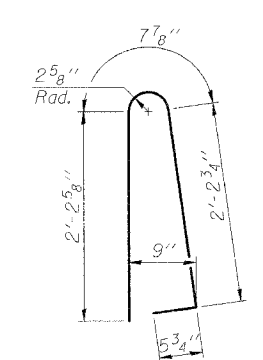
BAR s2(E)



BAR s1(E)



BAR s(E)



BAR d(E)

**SUPERSTRUCTURE
 BILL OF MATERIAL**

Bar	No.	Size	Length	Shape
a(E)	278	#5	15'-10"	—
a1(E)	278	#5	23'-6"	—
a2(E)	276	#6	6'-0"	—
a3(E)	596	#5	19'-9"	—
b(E)	329	#5	31'-7"	—
b1(E)	74	#6	21'-10"	—
b2(E)	111	#6	18'-11"	—
b3(E)	272	#5	27'-11"	—
c(E)	207	#5	2'-5"	J
c1(E)	207	#5	5'-7"	—
d(E)	227	#5	5'-7"	J
d1(E)	227	#5	7'-3"	—
d2(E)	227	#4	4'-5"	—
d3(E)	227	#6	3'-9"	J
d4(E)	40	#4	2'-0"	—
e(E)	26	#4	12'-9"	—
e1(E)	130	#4	17'-11"	—
e2(E)	2	#8	12'-9"	—
e3(E)	8	#8	25'-3"	—
e4(E)	2	#5	12'-9"	—
e5(E)	8	#5	24'-4"	—
m(E)	8	#6	16'-8"	—
m1(E)	16	#6	20'-4"	—
m2(E)	30	#6	9'-9"	—
m3(E)	16	#6	5'-1"	—
m4(E)	4	#6	2'-5"	—
m5(E)	24	#4	6'-10"	—
m6(E)	5	#8	6'-2"	—
s(E)	68	#5	5'-8"	J
s1(E)	44	#4	14'-8"	—
s2(E)	16	#4	14'-0"	—
v(E)	62	#5	3'-4"	J
Reinforcement Bars, Epoxy Coated			Pound	62540
Concrete Superstructure			Cu. Yds.	336.5

Bars indicated thus 1x3-#5 etc. indicates 1 line of bars with 3 lengths per line.

**SUPERSTRUCTURE DETAILS (SHEET 2)
 OUTER BELT WEST OVER TRIBUTARY
 TO LITTLE WABASH RIVER
 LOCAL ROAD SEC. 03-00098-00-BR
 EFFINGHAM COUNTY
 STATION 415+66.00
 STRUCTURE NO. 025-6009**

© Copyright Hanson Professional Services Inc. 2007

HANSON

DATE 03/29/07

03/29/2007 10:33 AM
 140516405620710CADDDStruct\Hanson\Trod\Plan.dgn
 LAYOUT: MAN: 12/20/07
 DRAWN: DAP: 01/17/07
 REVIEWED: JAL: 01/15/07