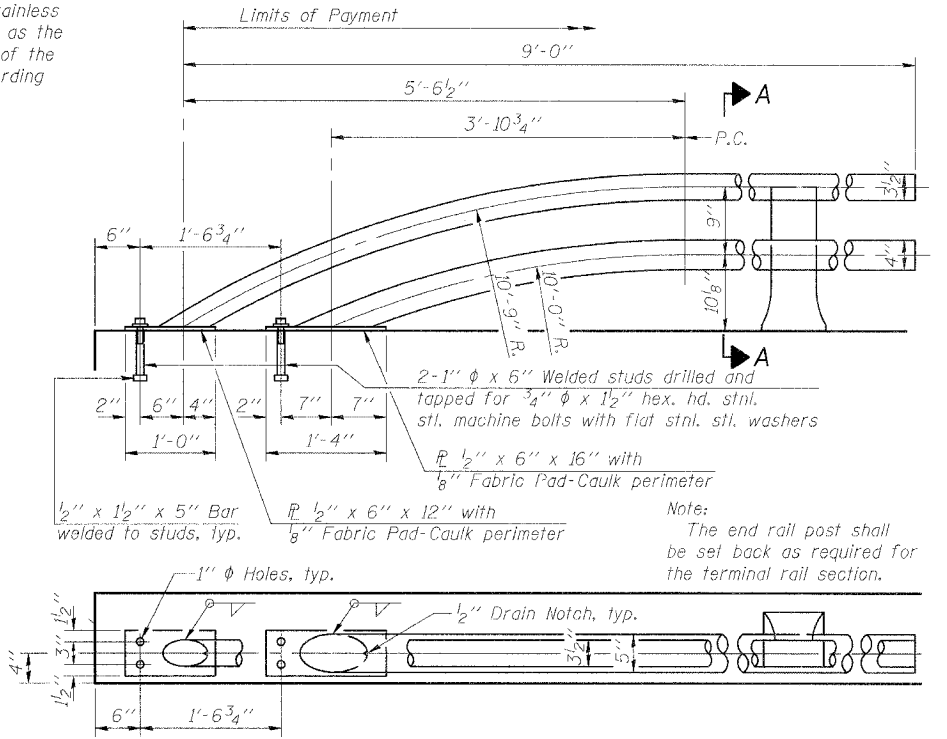


VIEW B-B

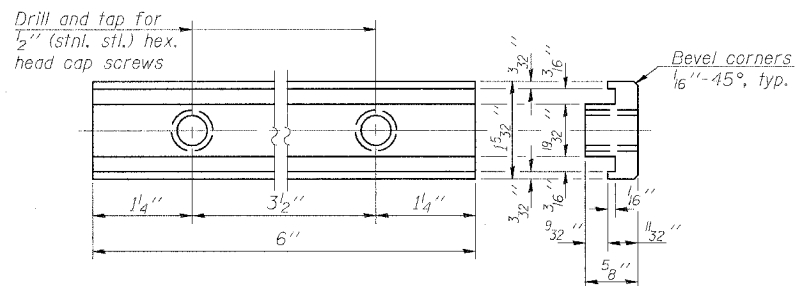
SECTION A-A

RAIL POST DETAILS

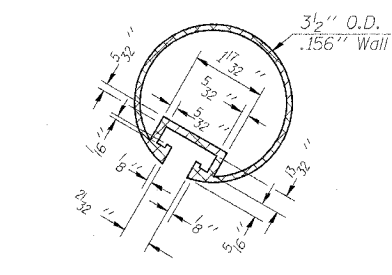
* In lieu of the cast-in-place anchor device shown, the Contractor has the option of drilling and setting stainless steel anchor rods of the same diameter and grade as the specified cap screws according to Article 509.06 of the Standard Specifications. Embedment shall be according to the manufacturer's specifications.



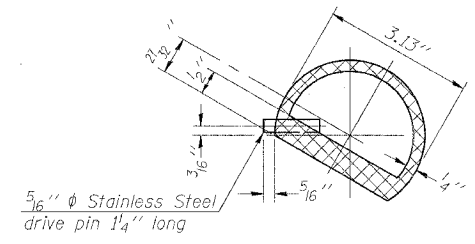
RAIL TERMINAL SECTION



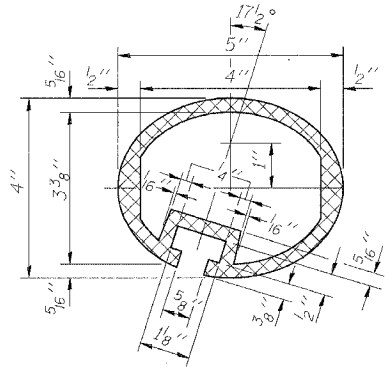
RAIL POST CLAMP BAR
For Top Rail



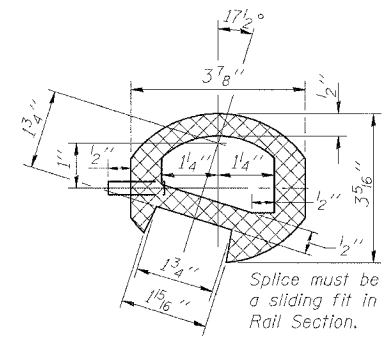
SECTION THRU TOP RAIL



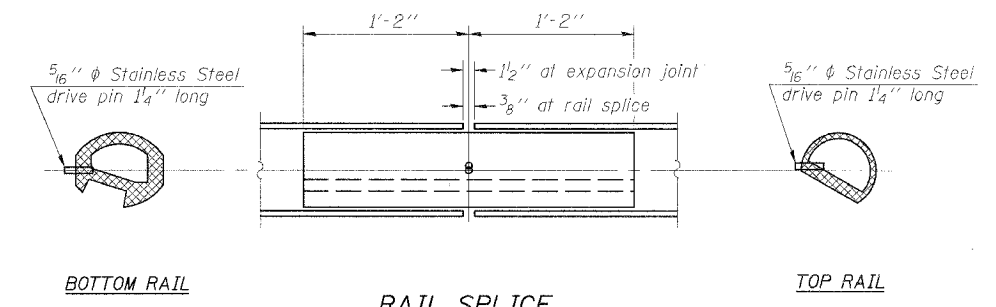
SECTION THRU SPLICE
For Top Rail



SEC. THRU ELLIPTICAL
RAIL SECTION



SEC. THRU SPLICE



RAIL SPLICE

BOTTOM RAIL

TOP RAIL

BILL OF MATERIAL

Item	Unit	Quantity
Aluminum Railing, Type L	Foot	206

Notes:
All Posts shall be normal to parapet.
All joints in rail shall be spliced per detail.
Provide 1-1/8 inch and 2-1/16 inch Aluminum Shims for 25% of the Posts. Rail elements shall be parallel to Grade-high spots will be ground and low spots shimmed.
See sheet 08 of 23 for rail post spacing.

ALUMINUM RAILING, TYPE L
OUTER BELT WEST OVER TRIBUTARY
TO LITTLE WABASH RIVER
LOCAL ROAD SEC. 03-00098-00-BR
EFFINGHAM COUNTY
STATION 415+66.00
STRUCTURE NO. 025-6009



03-29-007.10.33 AM
I:\05 Jobs\055207\CADD\Struct\Modell\ChailPlan.dgn

LAYOUT	MM	12/29/07
DRAWN	DAP	01/12/08
REVIEWED	JUT	01/15/08