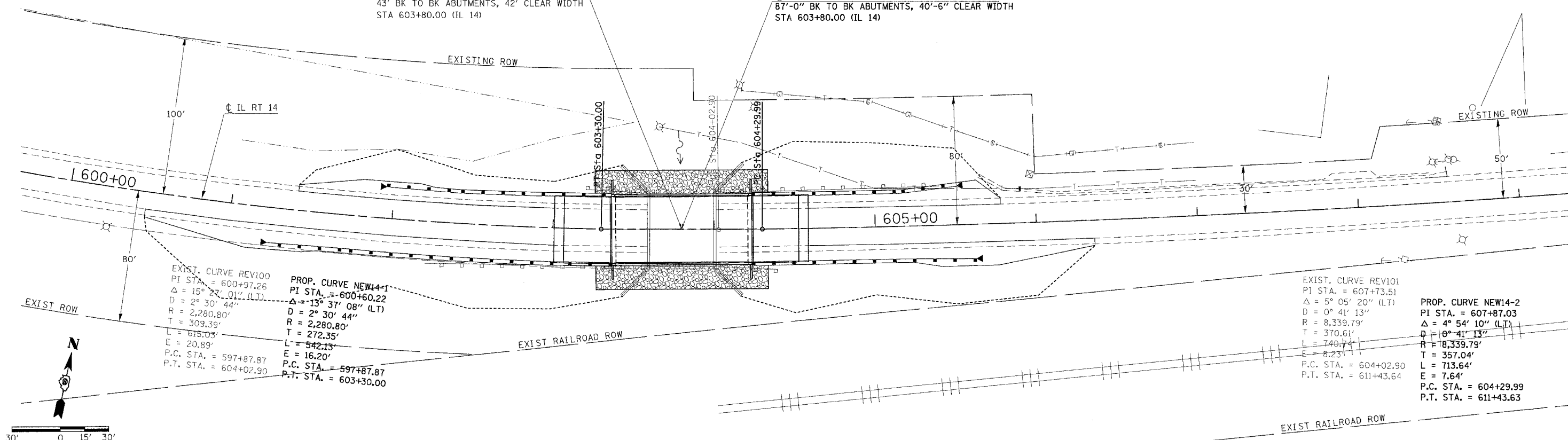


F.A.P. RTE.	SECTION	COUNTY	TOTAL SHEETS	SHEET NO.
869	104B-2	FRANKLIN	56	29
STA.		TO STA.		
FED. ROAD DIST. NO. -		ILLINOIS	FED. AID PROJECT	

EXISTING STRUCTURE NO. 028-0017
43' BK TO BK ABUTMENTS, 42' CLEAR WIDTH
STA 603+80.00 (IL 14)

PROPOSED STRUCTURE NO. 028-0076
87'-0" BK TO BK ABUTMENTS, 40'-6" CLEAR WIDTH
STA 603+80.00 (IL 14)

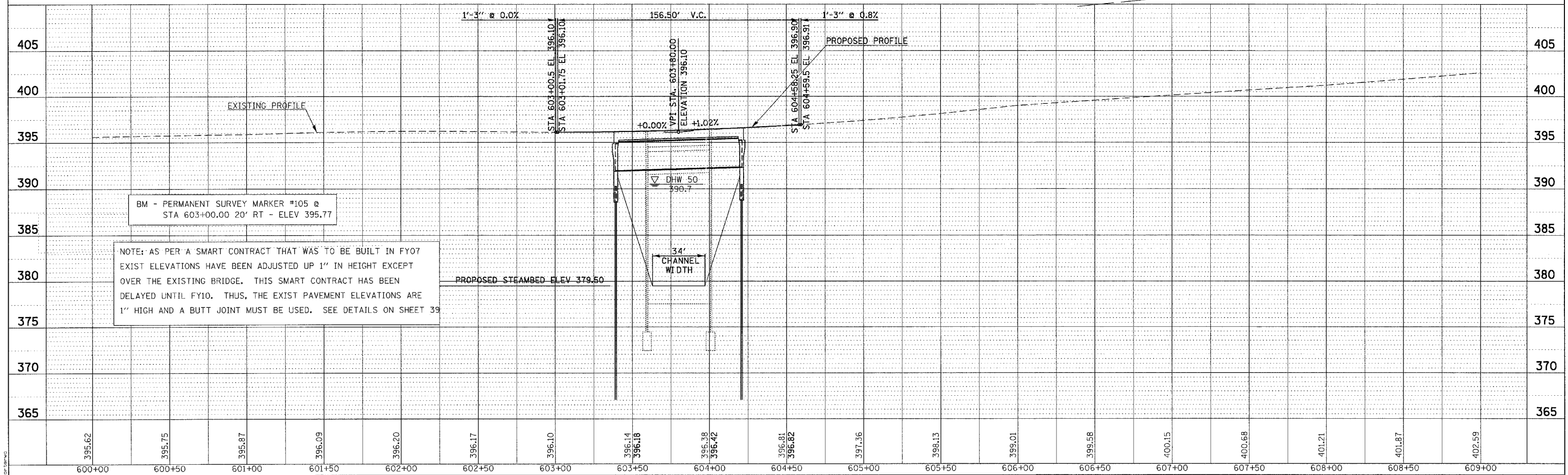


EXIST. CURVE REV100
PI STA. = 600+97.26
 $\Delta = 15^\circ 27' 01''$ (L.T.)
D = 2° 30' 44"
R = 2,280.80'
T = 309.39'
L = 615.03'
E = 20.89'
P.C. STA. = 597+87.87
P.T. STA. = 604+02.90

PROP. CURVE NEW14-1
PI STA. = 600+60.22
 $\Delta = 13^\circ 37' 08''$ (L.T.)
D = 2° 30' 44"
R = 2,280.80'
T = 272.35'
L = 542.13'
E = 16.20'
P.C. STA. = 597+87.87
P.T. STA. = 603+30.00

EXIST. CURVE REV101
PI STA. = 607+73.51
 $\Delta = 5^\circ 05' 20''$ (L.T.)
D = 0° 41' 13"
R = 8,339.79'
T = 370.61'
L = 740.74'
E = 8.23'
P.C. STA. = 604+02.90
P.T. STA. = 611+43.64

PROP. CURVE NEW14-2
PI STA. = 607+87.03
 $\Delta = 4^\circ 54' 10''$ (L.T.)
D = 0° 41' 13"
R = 18,339.79'
T = 357.04'
L = 713.64'
E = 7.64'
P.C. STA. = 604+29.99
P.T. STA. = 611+43.63



BM - PERMANENT SURVEY MARKER #105 @ STA 603+00.00 20' RT - ELEV 395.77

NOTE: AS PER A SMART CONTRACT THAT WAS TO BE BUILT IN FY07 EXIST ELEVATIONS HAVE BEEN ADJUSTED UP 1" IN HEIGHT EXCEPT OVER THE EXISTING BRIDGE. THIS SMART CONTRACT HAS BEEN DELAYED UNTIL FY10. THUS, THE EXIST PAVEMENT ELEVATIONS ARE 1" HIGH AND A BUTT JOINT MUST BE USED. SEE DETAILS ON SHEET 39

**PLAN/PROFILE - SN 028-0076
IL 14 OVER ANDY CREEK**

PLAN

REVISION	BY	DATE
NOTED		
ALIGNED		
CHECKED		
DATE FILED		
NO.		

PROFILE

REVISION	BY	DATE
NOTED		
GRADES		
CHECKED		
STRUCTURE		
NOVAKINS CHAD		
NO.		

5/14/2007
c:\projects\104B-2\104B-2.dgn
2:53:38 / 11
PLAN