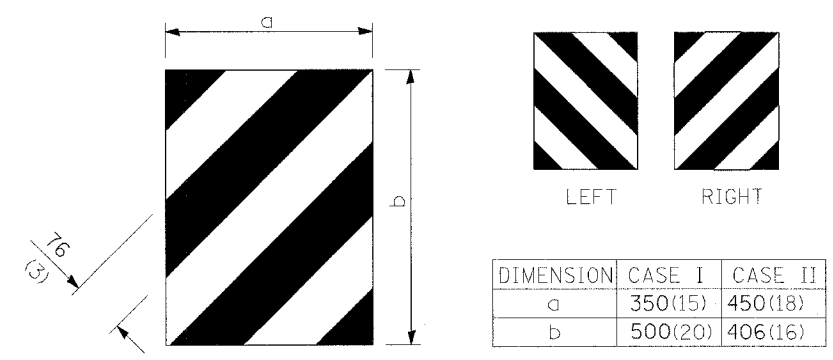
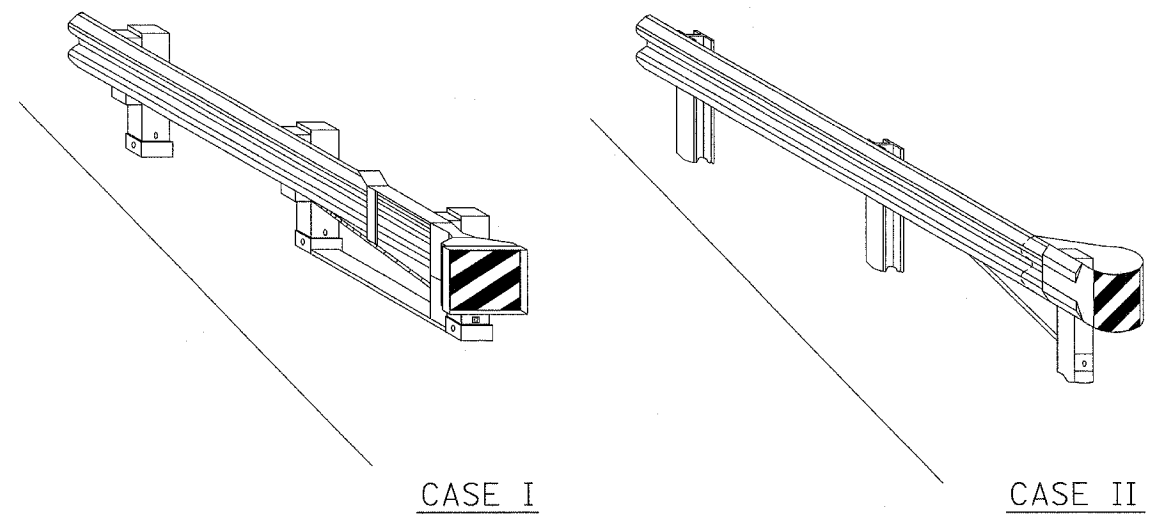
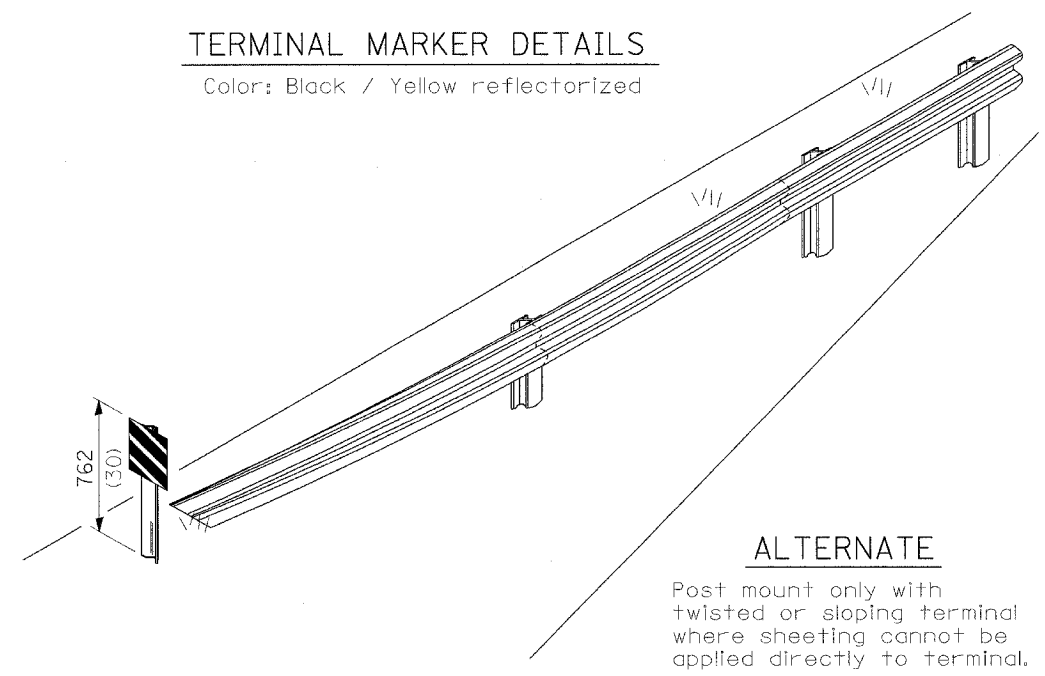


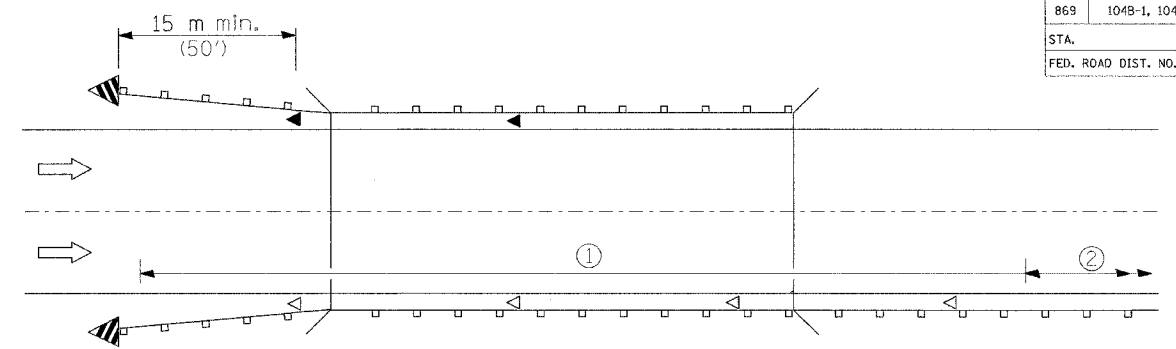
F.A.P. RTE	SECTION	COUNTY	TOTAL SHEETS	SHEET NO
869	1048-1, 1048-2	FRANKLIN	56	40
STA.		TO STA.		
FED. ROAD DIST. NO. -		ILLINOIS	FED. AID PROJECT	



TERMINAL MARKER DETAILS
Color: Black / Yellow reflectorized

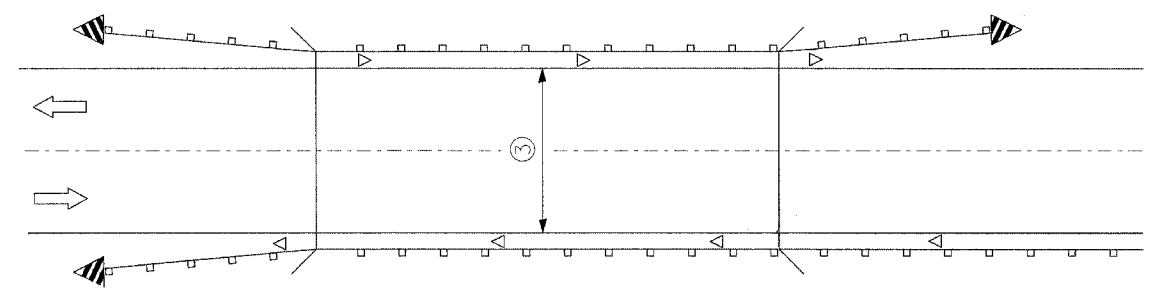


ALTERNATE
Post mount only with twisted or sloping terminal where sheeting cannot be applied directly to terminal.



- ① Spacing 24 m (80 ft.) max. for first 122 m (400 ft.) or curve spacing shown in Standard 635001, whichever is less (min. 4 reflectors regardless of length).
- ② After 122 m (400 ft.), transition to normal delineator spacing shown in Standard 635001, and continue as required.

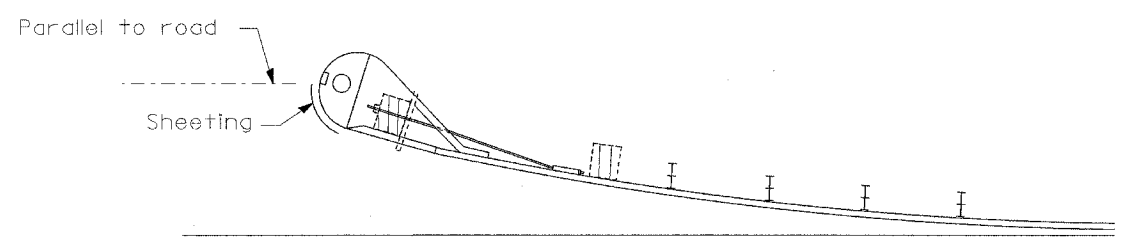
ONE-WAY TRAFFIC



- ③ Bidirectional silver/silver should be used in lieu of monodirectional silver on both sides of two-lane bridges where the pavement is less than 610 (24) wider than the pavement approaching the bridge.
- ◁ Monodirectional silver
 - ◄ Monodirectional amber
 - ◄◄ Terminal Marker - Black/Yellow Left or Right as appropriate

TWO-WAY TRAFFIC

GUARDRAIL / BARRIER WALL / BRIDGE RAIL REFLECTIORS



SHEETING POSITION: CASE II

All dimensions are in millimeters (inches) unless otherwise shown.

REFLECTOR AND TERMINAL MARKER PLACEMENT

DETAIL

DETAIL - REFLECTOR AND TERMINAL MARKER PLACEMENT