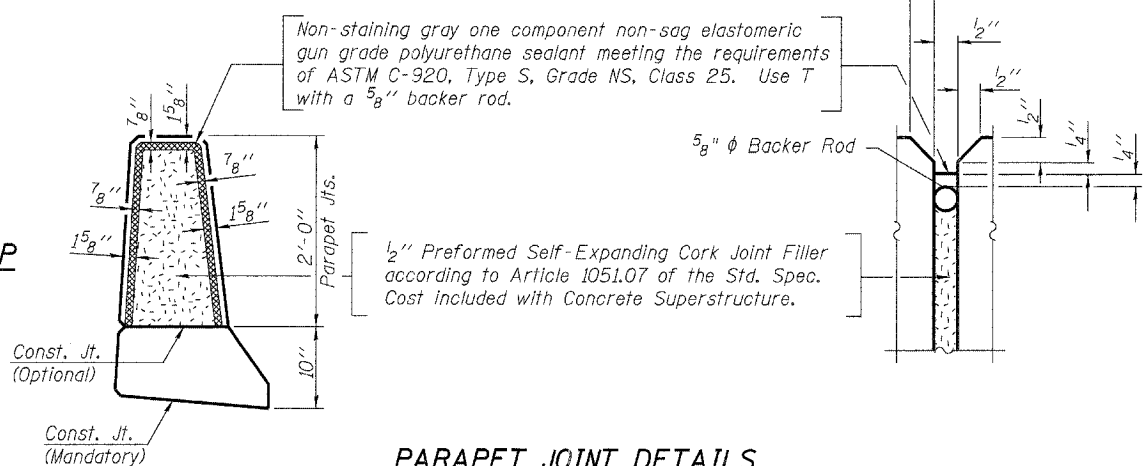


**SUPERSTRUCTURE BILL OF MATERIAL**

Bar	No.	Size	Length	Shape
d(E)	140	#5	24'-3"	—
a <sub>1</sub> (E)	105	#5	23'-9"	—
a <sub>2</sub> (E)	140	#5	18'-1"	—
a <sub>3</sub> (E)	105	#5	17'-7"	—
a <sub>4</sub> (E)	280	#6	6'-0"	—
b(E)	192	#5	22'-11"	—
b <sub>1</sub> (E)	111	#5	30'-0"	—
d(E)	190	#5	5'-7"	┘
d <sub>1</sub> (E)	95	#5	7'-5"	┘
d <sub>2</sub> (E)	95	#5	7'-10"	┘
e(E)	70	#4	17'-2"	—
e <sub>1</sub> (E)	6	#8	31'-3"	—
e <sub>2</sub> (E)	6	#4	29'-10"	—
m(E)	4	#6	17'-7"	—
m <sub>1</sub> (E)	4	#6	23'-9"	—
m <sub>2</sub> (E)	6	#6	18'-6"	—
m <sub>3</sub> (E)	6	#6	24'-8"	—
m <sub>4</sub> (E)	10	#6	5'-3"	—
m <sub>5</sub> (E)	4	#6	2'-3"	—
m <sub>6</sub> (E)	2	#6	2'-7"	—
m <sub>7</sub> (E)	2	#6	1'-10"	—
m <sub>8</sub> (E)	28	#6	8'-3"	—
s(E)	96	#5	5'-9"	┘
s <sub>1</sub> (E)	84	#4	9'-10"	┘
v(E)	88	#5	3'-4"	┘
Reinforcement Bars, Epoxy Coated		Pound	27840	
Concrete Superstructure		Cu. Yds.	142.3	
Floor Drains		Each	5	

**INSIDE ELEVATION OF PARAPET**



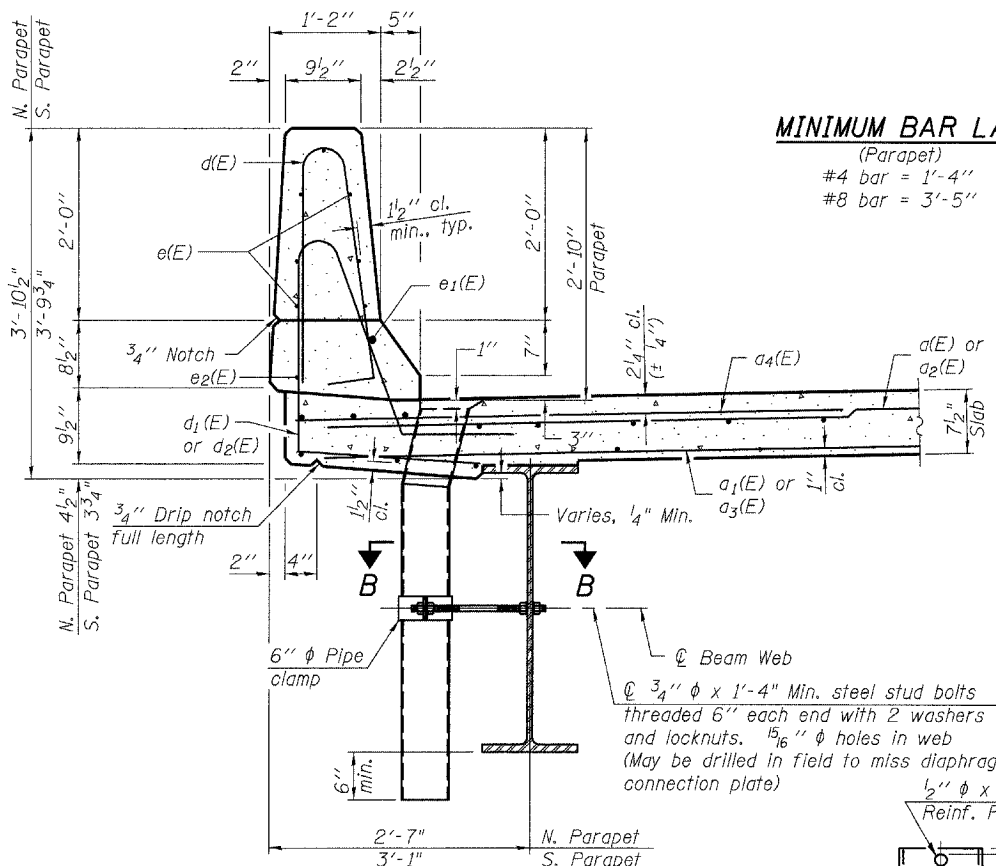
**MINIMUM BAR LAP**  
(Parapet)  
#4 bar = 1'-4"  
#8 bar = 3'-5"

**PARAPET JOINT DETAILS**

Notes:  
The exterior surfaces of the floor drains shall be painted with the finish coat as specified in the special provisions for Cleaning and Painting New Metal Structures. The exterior surfaces of the drains shall be cleaned according to Steel Structures Painting Council's Spec. SSPC-SPI prior to painting.  
Fiberglass pipe shall conform to ASTM D 2996, with short-time rupture strength hoop tensile stress of 30,000 p.s.i. minimum.

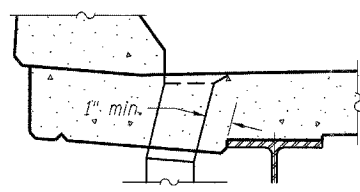
**BAR s(E)**

**BAR v(E)**

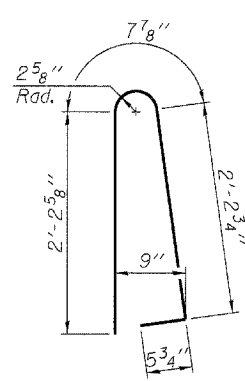
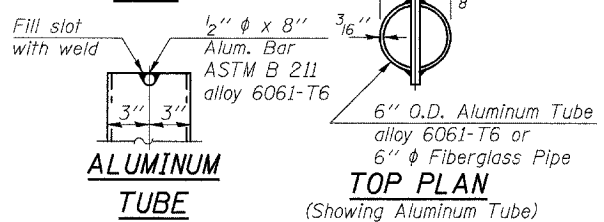


**SECTION THRU PARAPET**  
(North Parapet Shown)

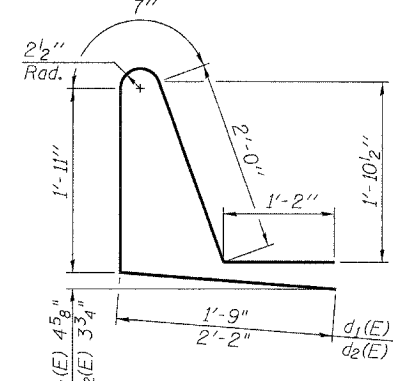
**DRAIN DETAIL**



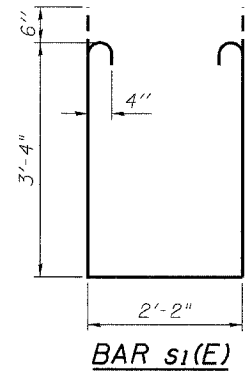
**FIBERGLASS PIPE**



**BAR d(E)**



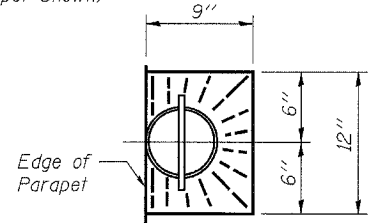
**BARS d<sub>1</sub>(E) AND d<sub>2</sub>(E)**



**BAR s<sub>1</sub>(E)**

**SECTION B-B**

\* Dimension as required by Pipe Clamp



**TOP PLAN**

REVISIONS	
NAME	DATE

**LIN ENGINEERING, LTD.**  
Consulting Engineers  
Chatham, Illinois

Designed By: JGF  
Checked By: MTH  
Date: 12/06

Drawn By: AJF  
File: 028-0076.DGN

ILLINOIS DEPARTMENT OF TRANSPORTATION  
**SUPERSTRUCTURE DETAILS**  
ILLINOIS ROUTE 14 OVER  
ANDY CREEK  
F.A.P. ROUTE 869 - SECTION 104B-2  
FRANKLIN COUNTY  
STATION 603+80.00  
STRUCTURE NO. 028-0076

E:\0602\Plans\028-0076.dgn  
3:03:39 PM  
5/7/2007