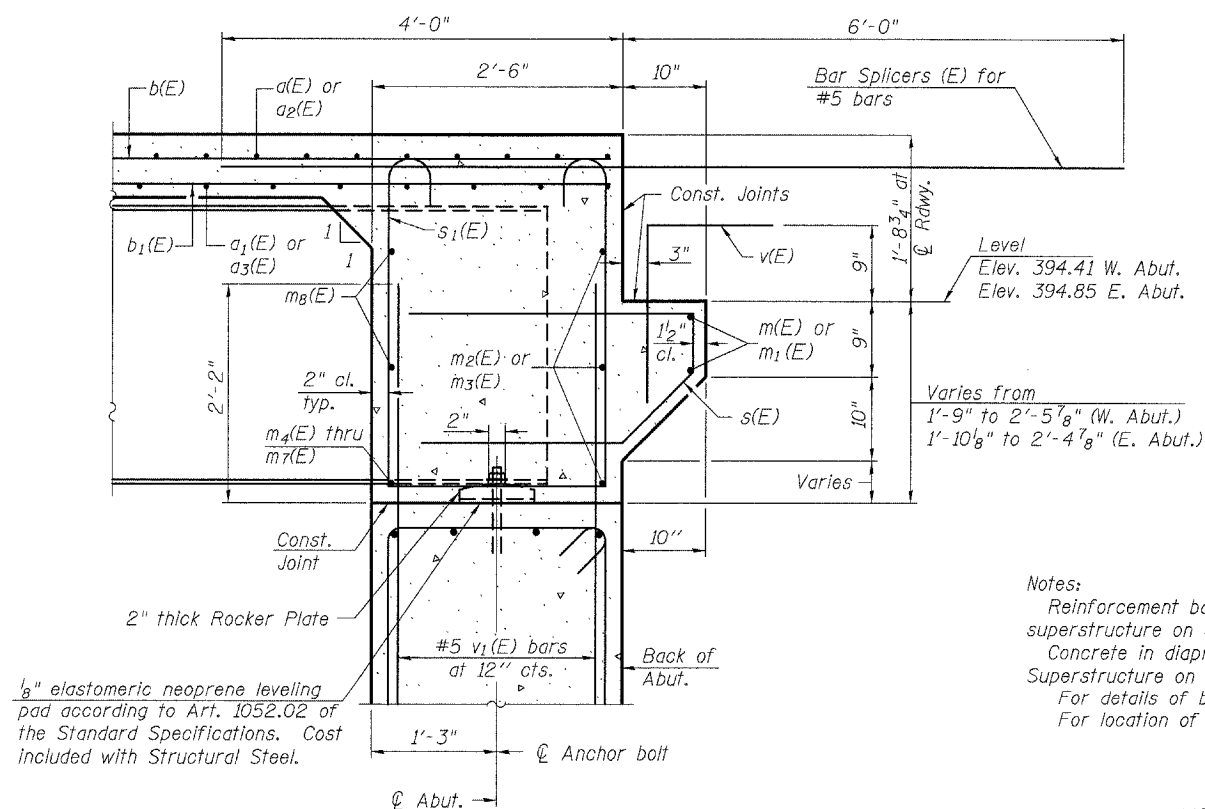
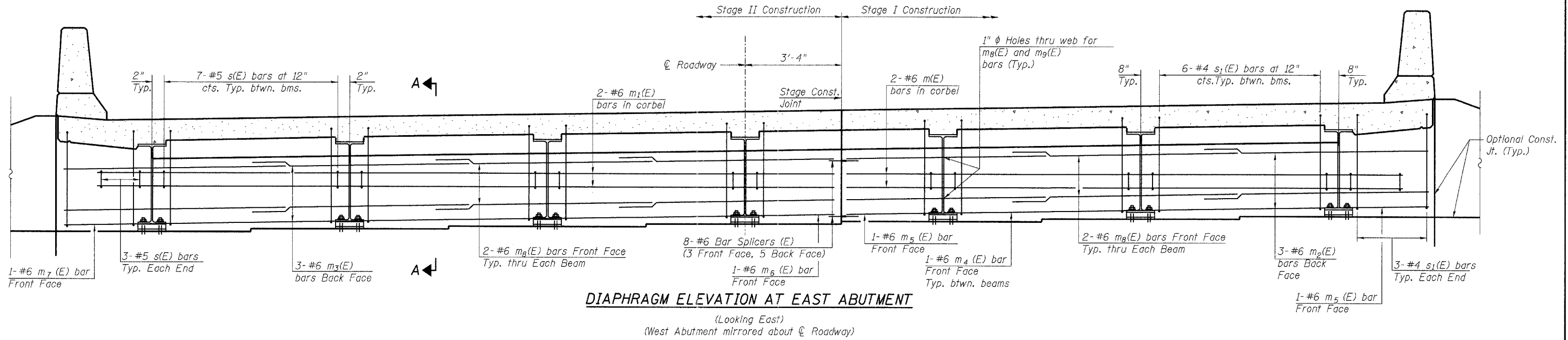
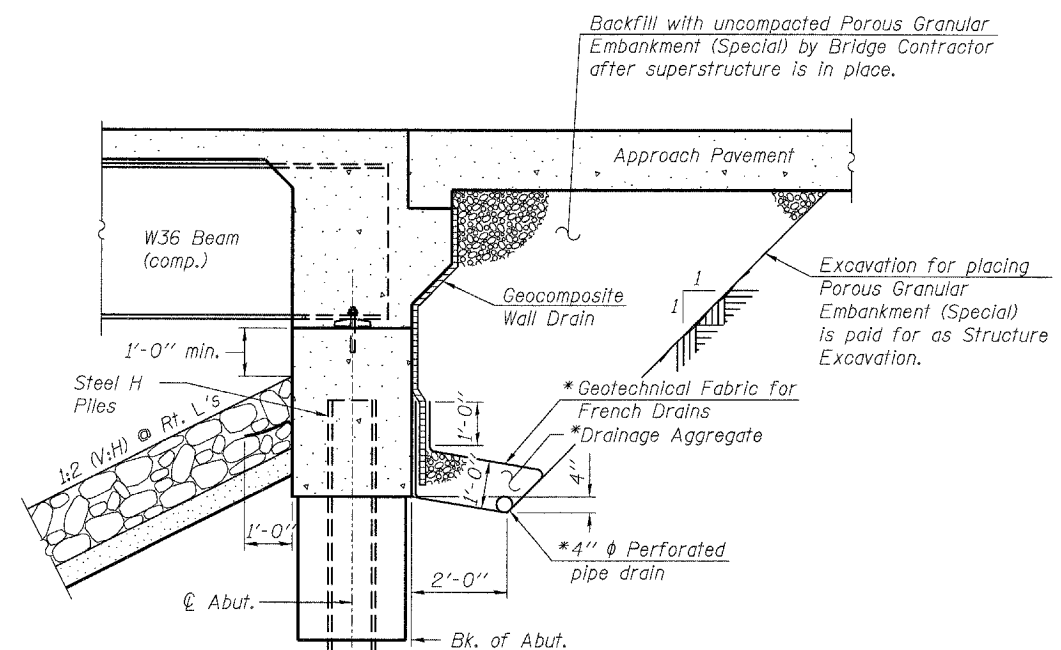


Contract # 98775



MIN. BAR LAP
#6 bar = 2'-9"



Notes:
Reinforcement bars in diaphragm are billed with superstructure on sheet 7 of 16.
Concrete in diaphragm is included with Concrete Superstructure on sheet 7 of 16.
For details of bars s(E) & s1(E) see sheet 7 of 16.
For location of holes thru web, see sheet 9 of 16.

* Included in the cost of Pipe Underdrains for Structures.

Note:
All drainage system components shall extend to 2'-0" from the end of each wingwall except an outlet pipe shall extend until intersecting with the side slopes. The pipes shall drain into concrete headwalls. (See Article 601.05 of the Standard Specifications and Highway Standard 601101).

ILLINOIS DEPARTMENT OF TRANSPORTATION
CONCRETE END DIAPHRAGMS
ILLINOIS ROUTE 14 OVER
ANDY CREEK
F.A.P. ROUTE 869 - SECTION 104B-2
FRANKLIN COUNTY
STATION 603+80.00
STRUCTURE NO. 028-0076

LIN ENGINEERING, LTD.
Consulting Engineers
Chatham, Illinois

REVISIONS	
NAME	DATE

Designed By: JBY
Checked By: MTH
Date: 12/06

Drawn By: AJF
File: 028-0076.DGN

E:\0602\Plans\028-0076.dgn 3:03:22 PM 5/7/2007